

THE WORLD OF LAPP

EPIC® Industrial connectors – simply complete



Legend for icons

INDUSTRIES



Mechanical and
Plant Engineering



Solar Energy

PRODUCT CHARACTERISTICS



Mechanical resistance



Connector with
standard housing unit



Quantity



Interference signals



Assembly time



UV-resistant



Optimum strain relief



Waterproof



Robust



Info

- Complete connectors - easy to order starting from 1 piece



Plug



Socket

+ = Complete connection

Please note: the purpose of the icons is to provide you with a quick overview and a rough indication of the product-features to which the corresponding information relates. You can find details of product characteristics in the “technical data” sections on the product pages.

Content



Company information	2
EPIC® – for when things get extreme	4
Finding solutions	5



EPIC® Industrial connectors	6
At a glance	



EPIC® Rectangular connectors	
EPIC® H-A 3 Kits Thermoplastic	8
EPIC® H-A 3 Kits Metal	9
EPIC® H-A 4 Kits Thermoplastic	10
EPIC® H-A 4 Kits Metal	11
EPIC® H-A 10 Kits	12
EPIC® H-A 16 Kits	13
EPIC® H-BE 6 Kits	14
EPIC® H-BE 10 Kits	15
EPIC® H-BE 16 Kits	16
EPIC® H-BE 24 Kits	17



EPIC® Circular connectors	
EPIC® SIGNAL M23 Kits 12pole	18
EPIC® SIGNAL M23 Kits 12pole	19
EPIC® SIGNAL M23 Kits 17pole	20
EPIC® LS 1 Kits 6pole	21
EPIC® LS 1 Kits 8pole	22



EPIC® SOLAR connectors	
EPIC® SOLAR 4 M	23
EPIC® SOLAR 4 F	23



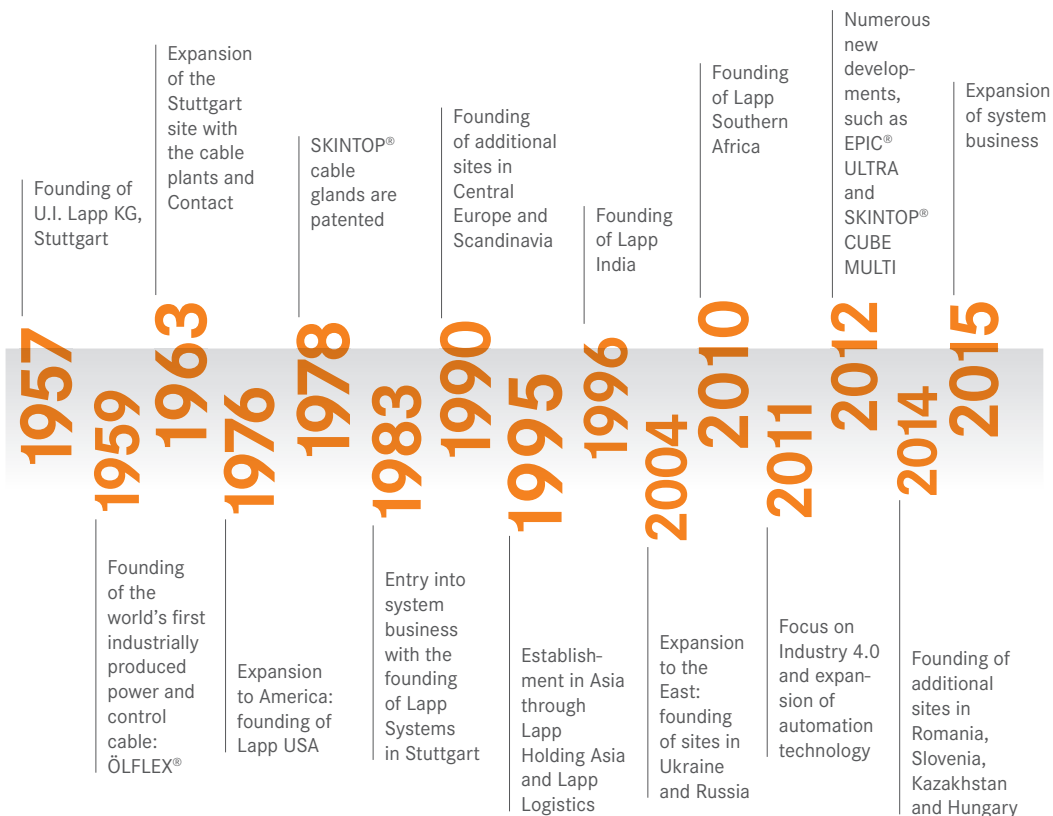
EPIC® Housings and inserts	24
----------------------------	----

From small start-up to Global Player

The name Lapp not only stands for innovative strength and quality, it also stands for continuity. The Lapp company was founded by Ursula Ida and Oskar Lapp in 1957 as an ambitious family company – and to this day has remained as such.

The desire to actively shape the future and the courage to embrace change and to think in a visionary way that is focused on solutions and customers are what make the company great. Our relationships with our employees, suppliers and customers which are based on partnership have always played a central role here. In less than 50 years, the small Stuttgart-based family business has evolved into a global player with around 3,200 employees – and into an international market leader for cable technology.

All the signs are pointing towards the future. This has not only become clear at Lapp's new, state-of-the-art European headquarters in Stuttgart-Vaihingen. The third generation of the Lapp family has now taken on responsibilities within the company. Thinking and acting in a value-oriented way is and remains an important component of the company philosophy. After all, the name Lapp also stands for this.





Andreas Lapp,
Matthias Lapp,
Ursula Ida Lapp,
Alexander Lapp,
Siegbert E. Lapp.

EPIC® - for when things get extreme



© Herrenknecht AG, Schwanau, Germany

EPIC® connectors also help to supply power to the tunnel boring machines from Herrenknecht in the Gotthard Base Tunnel

EPIC® for the longest railway tunnel in the world

In June 2016, after more than 20 years of construction, the Gotthard Base Tunnel in Switzerland, which will be the longest railway tunnel in the world at 57 kilometres, is set to have its grand opening. What hardly anyone knows is that EPIC® industrial connectors from Lapp have also contributed to the success of this construction of the century. In order to dig the two railway tunnels from north to south through the hard rock, four tunnel boring machines from the tunnel construction

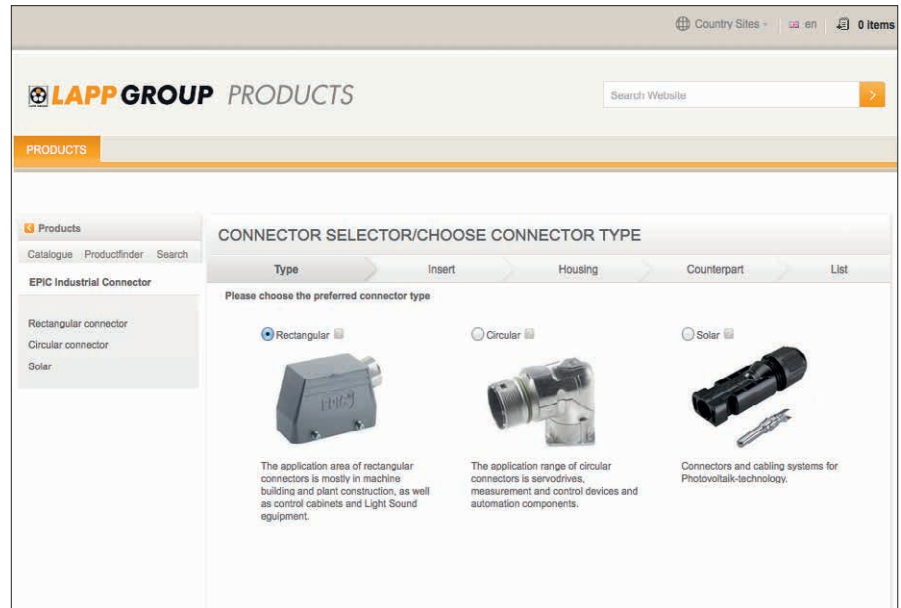
experts Herrenknecht based in Schwanau (Baden-Württemberg, Germany) were used. Just one machine (the so-called Gripper TBM) has over 26 tons of pressing force, is 400 metres long and 9 metres wide. This makes it possible to break down even the hardest stone. EPIC® connectors were used here as extension connectors, since the further the tunnel boring machine is driven into the mountain the longer the cable for the power supply and controls must be. The EPIC® H-BE connectors were

interconnected with housings and inserts every 50 metres to ensure that everything works reliably. These connectors are particularly suitable for higher voltages and currents and boast a high level of reliability. This is particularly important deep in the tunnel. Incidentally: the new tunnel will shorten the travel time for trains running between Zurich and Milan by an hour to just 2 hours and 40 minutes.

Finding solutions

EPIC® Connector Selector – Support for configuration of Industrial Connectors

Design, insert, housing and counterpart. These four selections take you to the appropriate connector in just a few clicks.

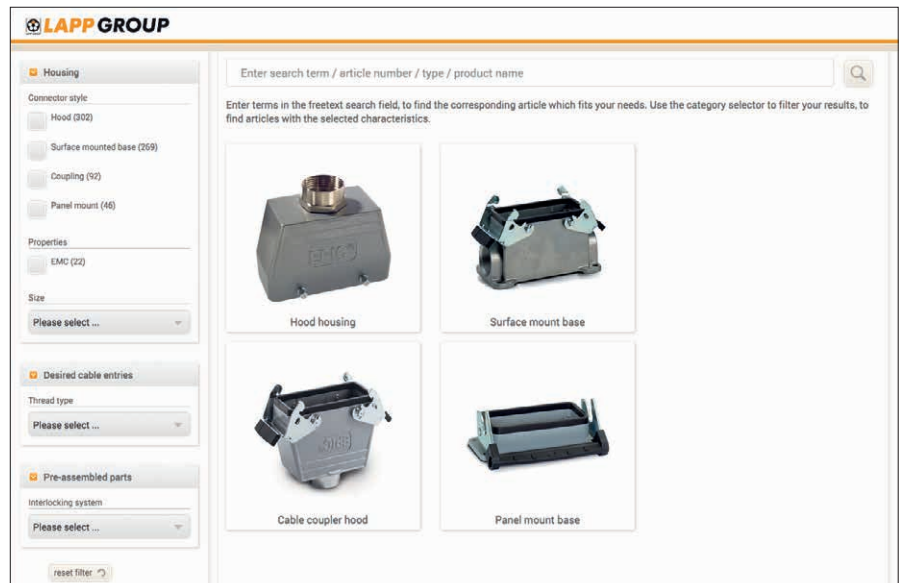


<http://products.lappgroup.com/connectorselector.html>




Cable Connector Selector

Configure your own individual industrial connector housing with locking concept and cable entries.



<http://products.lappgroup.com/connector-housing.html>



Properties 	Connection type					Connection cross section in mm ² depending on connection type	Rated voltage according to standards			Rated current for largest connection cross section according to standards			Approvals International
	Screw	Crimp	Spring	Push-In	Solder		IEC	UL/USR	CSA/CNR	IEC	UL/USR	CSA/CNR	
Rectangular – inserts fixed													
EPIC® H-A 3, 4	●					0.5 – 2.5	400 V	600 V	600 V	23 A	10 A	10 A	VDE, UR, CSA
EPIC® H-A 10, 16, 32, 48	●					0.5 – 2.5	250 V	600 V	600 V	16 A	14 A	16 A	VDE, UR, CSA
EPIC® STA 6, 14, 20	●				●	0.5 – 1.5/ max. 1.5	24 VAC/60 VDC	48 V	48 V	10 A	10 A	10 A	UR, CSA
EPIC® H-Q 5		●				0.14 – 4.0	230 V/400 V	600 V	600 V	16 A	16 A	16 A	UR, CSA
EPIC® H-D 7, 8		●				0.14 – 2.5	H*	250 V	–	10 A	10 A	–	UR
EPIC® H-D 15, 25, 40, 64		●				0.14 – 2.5	250 V	250 V	–	10 A	10 A	–	UR
EPIC® H-DD 24, 42, 72, 108		●				0.14 – 2.5	250 V	600 V	600 V	10 A	8.5 A	10 A	UR, CSA
EPIC® H-BE 6, 10, 16, 24, 32, 48	●	●	●	●		0.5 – 2.5/ 0.14 – 4.0	500 V	600 V	600 V	16 A	16 A	16 A	VDE, cURus
EPIC® H-EE 10, 18, 32, 46		●				0.14 – 4.0	500 V	600 V	600 V	16 A	16 A	16 A	UR, CSA
EPIC® H-BS 6, 12	●					0.5 – 6.0	500 V	600 V	600 V	35 A	35 A	35 A	UR, CSA
EPIC® H-BVE 3, 6, 10	●					0.5 – 2.5	630 V	600 V	600 V	16 A	16 A	16 A	VDE, cURus
POWER H-S 4	●					2.5 – 10.0	1000 V	–	–	65 A	–	–	–
EPIC® POWER K 4/0, 4/2	●					1.5 – 16.0	830 V	–	–	80 A	–	–	–
EPIC® TB-H-BE 16, 24	●					0.5 – 4.0	500 V	600 V	600 V	16 A	16 A	16 A	UR, CSA
Rectangular – inserts modular													
High voltage 1+PE, 2	●					10.0 – 25.0	1000 V	600 V	–	82 A	82 A	–	VDE, cURus
EPIC® POWER HC2		●				16	1000 V	–	–	65 A	–	–	–
POWER HHC2		●				16.0 – 35.0	1000 V	–	–	150 A	–	–	–
POWER HHC1		●				50.0 – 95.0	1000 V	–	–	220 A	–	–	–
High voltage 3-pin		●				1.5 – 10.0	1000 V	–	–	50 A	–	–	–
High voltage 4+PE		●				0.5 – 2.5	1000 V	–	–	16 A	–	–	–
3-pin		●				1.5 – 10.0	630 V	600 V	600 V	40 A	40 A	35 A	UR, CSA
HE 4-pin		●				0.5 – 4.0	630 V	–	–	25 A	–	–	–
Cage clamp 4-pin			●			0.5 – 2.5	400 V	–	–	14 A	–	–	–
5-pin		●				0.5 – 4.0	400 V	400 V	400 V	20 A	20 A	16 A	UR, CSA
10-pin		●				0.14 – 2.5	250 V	250 V	240 V	10 A	10 A	10 A	UR, CSA
10-pin stamped		●				0.14 – 2.5	250 V	–	–	10 A	–	–	–
20-pin		●				0.08 – 0.56	100 V	100 V	100 V	4 A	4 A	4 A	UR, CSA
Blind						–	–	–	–	–	–	–	–
Coaxial		●				Coaxial	250 V	–	–	–	–	–	–
PROFIBUS® DP	●					0.08 – 1.5	30 V	–	–	1 A	–	–	–
Universal bus	●					0.08 – 1.5	30 V	–	–	1 A	–	–	–
RJ45		●				0.14 – 2.5/ 0.12 – 0.2	600 V/ 125 V	–	–	P: 10 A S: 1.5 A	–	–	–
Pneumatic 1, 2-pin				●		∅ 2.5/4.0 mm ∅ 2.5/4.0 mm	–	–	–	–	–	–	–
Round													
EPIC® POWER M12 3+PE	●					0.75 – 1.5	630 V	600 V	–	12 A	12 A	12 A	cURus
EPIC® SIGNAL M17 8, 17		●				0.06 – 0.56/ 0.06 – 1.0	60 V	–	–	3.6 A	–	–	–
EPIC® POWER M17 3+PE		●				0.5 – 2.5	630 V	–	–	20 A	–	–	–
EPIC® POWER M17 5+PE, 6+PE, 7+PE		●				0.06 – 1.0	630 V	–	–	14 A	–	–	–
EPIC® POWER M17 3+PE+5		●				0.06 – 1.0/ 0.06 – 0.56	630 V/ 60 V	–	–	P: 14 A S: 3.6 A	–	–	–
EPIC® SIGNAL M23 6, 7		●			●	0.06 – 2.5	150 V	150 V	150 V	18 A	15 A	15 A	VDE, cURus
EPIC® SIGNAL M23 8+1		●			●	0.06 – 1.0/ 0.06 – 2.5	150 V	150 V	150 V	P: 20 A S: 7 A	P: 20 A S: 7 A	P: 20 A S: 7 A	VDE, cURus
EPIC® SIGNAL M23 9		●			●	0.06 – 1.0	150 V	150 V	150 V	7 A	7 A	6 A	VDE, cURus
EPIC® SIGNAL M23 12, 16		●			●	0.06 – 1.0	100 V	100 V	100 V	7 A	7 A	6 A	VDE, cURus
EPIC® SIGNAL M23 17		●			●	0.06 – 1.0	50 V	50 V	50 V	7 A	7 A	7 A	VDE, cURus
EPIC® SIGNAL R3.0					●	0.06 – 1.0	24 VAC/60 VDC	–	–	7.5 A	–	–	–
EPIC® POWER LS1 5+PE		●				0.5 – 4.0	630 V	600 V	600 V	25 A	22 A	17 A	VDE, cURus
EPIC® POWER LS1 3+PE+4		●				0.5 – 4.0/ 0.4 – 1.0	630 V/250 V	600 V/ 250 V	600 V/ 250 V	P: 26 A S: 7 A	P: 22 A S: 7 A	P: 17 A S: 7 A	VDE, cURus
EPIC® POWER LS1.5 3+PE+2, 3+PE+4		●				0.75 – 10.0/ 0.14 – 4.0	630 V/250 V	–	–	P: 70 A S: 30 A	–	–	–
EPIC® POWER LS3 3+PE+2, 3+PE+4		●				10.0 – 50.0/ 0.75 – 1.5	630 V/250 V	–	–	P: 150 A S: 12 A	–	–	–
EPIC® POWERLOCK S	●					50.0 – 120.0	1000 V	–	–	400 A	–	–	VDE
EPIC® POWERLOCK C		●				35.0 – 240.0	1000 V	–	–	660 A	–	–	VDE
SOLAR													
EPIC® SOLAR 4		●				2.5 – 6.0	1000 V	–	–	30 A	–	–	TÜV

P: Power S: Signal H*: In metal housing: 24 VAC/60 VDC; in plastic housing: 250 V

EPIC® rectangular connectors

Flexible, robust connectors for mechanical engineering



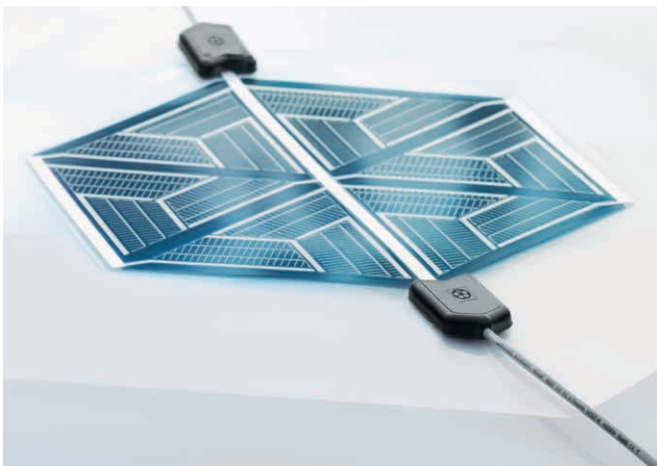
The connector system for mechanical and plant engineering and wherever a robust connection system is required. EPIC® Rectangular connectors are available as components. The right connector for any application can be made individually from housings, inserts and contacts. www.lappgroup.com/connectorfinder

For the housing, there are two performance classes to choose from

- EPIC® Standard is robust and there is a flexible choice of cable entries www.lappgroup.com/connector-housing
- EPIC® ULTRA has a high corrosion protection, EMC protection as well as a stainless steel interlocking device

EPIC® inserts are available in a fixed pin design and as a modular system

- EPIC® fixed pin inserts are easy to handle and come in a wide variety of designs
- EPIC® modular inserts offer flexibility with modules for data, signals, power, fibre-optics and pneumatics. This means every insert is individually tailor-made for the relevant modul configuration



Photographs are not to scale and do not represent detailed images of the respective products.

EPIC® circular connectors

Compact connectors for motion control and energy transfer



Circular connections come in two designs, a signal design with gold-plated contacts for transmitting delicate signals and as high-reserve power connectors.

EPIC® SIGNAL connectors are available as M17, M23 and R3.0 (M27)

- The metal housing with an integrated EMC screen contact reliably prevents electromagnetic interferences
- Gold-plated signal contacts reliably transmit with the lowest of currents and voltages

EPIC® POWER connectors are available as M12, M17, LS1 (M23), LS1.5 (M40) and LS3 (M58)

- The integrated EMC cable glands offer strain relief and are perfectly sealed
- High-quality sealing materials for good chemical protection

EPIC® POWERLOCK

- Perfect for transmitting very high currents
- Colour coded and geometrically coded in order to prevent incorrect connections

EPIC® SOLAR connectors

Durable connectors for photovoltaics

High-quality connections for a long-term and reliable outdoor connection

EPIC® SOLAR field harnessable

- Crimp and insert the contact, twist the cable gland, it's that simple

EPIC® SOLAR Map for organic PV modules

- Customised production instead of off-the-shelf products, that's what the new PV connection technology made by Lapp is about



EPIC® H-A 3 Kits Thermoplastic

Benefits

- Pre-packed kits with compatible components
- Uncomplicated ordering
- No misplaced orders

Similar products

- EPIC® H-A 3 Kits Metal

Technical data

Rated voltage (V)
IEC: 400 V
UL: 600 V
CSA: 600 V

Rated current (A)
IEC: 23 A
UL: 10 A
CSA: 10 A

Number of contacts
3 + PE

Info

- Complete connectors - easy to order starting from 1 piece

+ = Complete connection



Article number	Pieces / PU
EPIC® H-A 3 Kits Thermoplastic	
75009601	1

Article numbers for single components

- H-A 3 SS 10420000
- H-A 3 Tgv M20 19426000

EPIC KIT H-A 3 SS TG M20



- EPIC® H-A 3 screw-termination male insert
- EPIC® H-A 3 hood
- Housing: thermoplastic grey



Article number	Pieces / PU
H-A 3 Tgv M20	
75009603	1

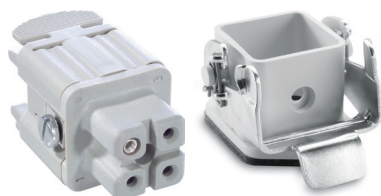
Article numbers for single components

- H-A 3 SS 10420000
- H-A 3 Ts M20 19427000

EPIC KIT H-A 3 SS TS M20



- EPIC® H-A 3 screw-termination male insert
- EPIC® H-A 3 hood
- Side cable entry
- Housing: thermoplastic grey



Article number	Pieces / PU
H-A 3 Ts M20	
75009605	1

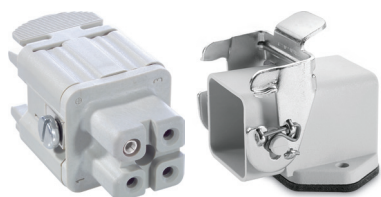
Article numbers for single components

- H-A 3 BS 10421000
- H-A 3 Ag 10422000

EPIC KIT H-A 3 BS AG



- EPIC® H-A 3 screw termination female insert
- EPIC® H-A 3 panel-mount base
- Straight version
- Housing: thermoplastic grey



Article number	Pieces / PU
H-A 3 Ag	
75009607	1

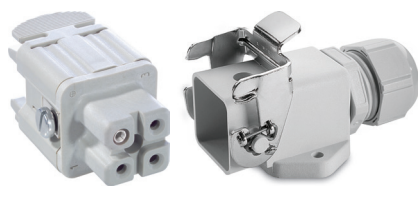
Article numbers for single components

- H-A 3 BS 10421000
- H-A 3 Ags 10423000

EPIC KIT H-A 3 BS AGS



- EPIC® H-A 3 screw termination female insert
- EPIC® H-A 3 panel-mount base
- Angled version
- Housing: thermoplastic grey



Article number	Pieces / PU
H-A 3 Ags	
75009609	1

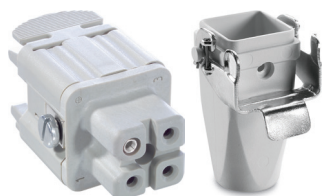
Article numbers for single components

- H-A 3 BS 10421000
- H-A 3 Aagsv M20 19421900

EPIC KIT H-A 3 BS AGS M20



- EPIC® H-A 3 screw termination female insert
- EPIC® H-A 3 panel-mount base
- Angled version
- Housing: thermoplastic grey



Article number	Pieces / PU
H-A 3 Aagsv M20	
75009611	1

Article numbers for single components

- H-A 3 BS 10421000
- H-A 3 Tgbv M20 19429000

EPIC KIT H-A 3 BS TGB M20



- EPIC® H-A 3 screw termination female insert
- EPIC® H-A 3 cable coupler hood
- Housing: thermoplastic grey



EPIC® H-A 3 Kits Metal

Benefits

- Pre-packed kits with compatible components
- Uncomplicated ordering
- No misplaced orders

Similar products

- EPIC® H-A 3 Kits Thermoplastic

Technical data

Rated voltage (V)
IEC: 400 V
UL: 600 V
CSA: 600 V

Rated current (A)
IEC: 23 A
UL: 10 A
CSA: 10 A

Number of contacts
3 + PE

Info

- Complete connectors - easy to order starting from 1 piece

+ = Complete connection

EPIC KIT H-A 3 SS MTG M20



- EPIC® H-A 3 screw-termination male insert
- EPIC® H-A 3 hood
- Housing: zinc die-casting, grey

Article number	Pieces / PU
EPIC® H-A 3 Kits Metal	
75009602	1

Article numbers for single components

- H-A 3 SS 10420000
- H-A 3 MTgv M20 19512100



EPIC KIT H-A 3 SS MTS M20



- EPIC® H-A 3 screw-termination male insert
- EPIC® H-A 3 hood
- Side cable entry
- Housing: zinc die-casting, grey

Article number	Pieces / PU
H-A 3 MTgv M20	
75009604	1

Article numbers for single components

- H-A 3 SS 10420000
- H-A 3 Ts M20 19512300



EPIC KIT H-A 3 BS MAG

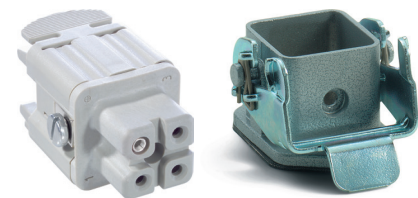


- EPIC® H-A 3 screw termination female insert
- EPIC® H-A 3 panel-mount base
- Straight version
- Housing: zinc die-casting, grey

Article number	Pieces / PU
H-A 3 Ts M20	
75009606	1

Article numbers for single components

- H-A 3 BS 10421000
- H-A 3 Mag 10422500



EPIC KIT H-A 3 BS MAGS

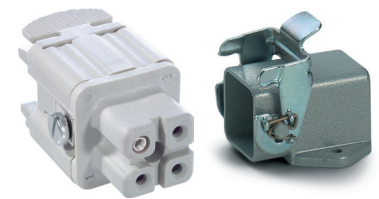


- EPIC® H-A 3 screw termination female insert
- EPIC® H-A 3 panel-mount base
- Angled version
- Housing: zinc die-casting, grey

Article number	Pieces / PU
H-A 3 Mag	
75009608	1

Article numbers for single components

- H-A 3 BS 10421000
- H-A 3 Mags 10423500



EPIC KIT H-A 3 BS MAGS M20

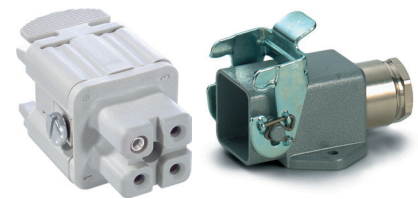


- EPIC® H-A 3 screw termination female insert
- EPIC® H-A 3 panel-mount base
- Angled version
- Housing: zinc die-casting, grey

Article number	Pieces / PU
H-A 3 Mags	
75009610	1

Article numbers for single components

- H-A 3 BS 10421000
- H-A 3 MAGsv M20 19512700



EPIC KIT H-A 3 BS MTGB M20

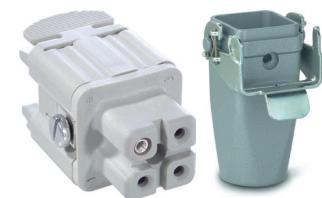


- EPIC® H-A 3 screw termination female insert
- EPIC® H-A 3 cable coupler hood
- Housing: zinc die-casting, grey

Article number	Pieces / PU
H-A 3 MAGsv M20	
75009612	1

Article numbers for single components

- H-A 3 BS 10421000
- H-A 3 MTgvb M20 19512900





EPIC® H-A 4 Kits Thermoplastic

Benefits

- Pre-packed kits with compatible components
- Uncomplicated ordering
- No misplaced orders

Similar products

- EPIC® H-A 4 Kits Metal

Technical data

Rated voltage (V)
IEC: 400 V
UL: 600 V
CSA: 600 V

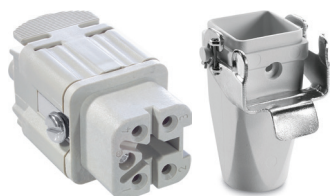
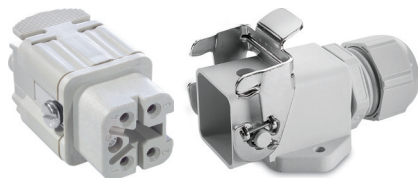
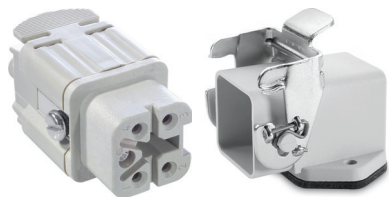
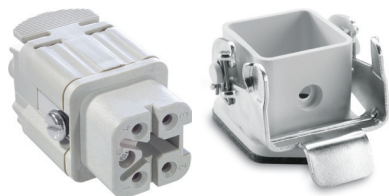
Rated current (A)
IEC: 23 A
UL: 10 A
CSA: 10 A

Number of contacts
4 + PE

Info

- Complete connectors - easy to order starting from 1 piece

+ = Complete connection



Article number	Pieces / PU
EPIC® H-A 4 Kits Thermoplastic	
75009613	1

Article numbers for single components

- H-A 4 SS 10431000
- H-A 3 Tgv M20 19426000

EPIC KIT H-A 4 SS TG M20



- EPIC® H-A 4 screw-termination male insert
- EPIC® H-A 3 hood
- Straight cable entry
- Housing: thermoplastic grey

Article number	Pieces / PU
H-A 3 Tgv M20	
75009615	1

Article numbers for single components

- H-A 4 SS 10431000
- H-A 3 Ts M20 19427000

EPIC KIT H-A 4 SS TS M20



- EPIC® H-A 4 screw-termination male insert
- EPIC® H-A 3 hood
- Side cable entry
- Housing: thermoplastic grey

Article number	Pieces / PU
H-A 3 Ts M20	
75009617	1

Article numbers for single components

- H-A 4 BS 10432000
- H-A 3 Ag 10422000

EPIC KIT H-A 4 BS AG



- EPIC® H-A 4 screw termination female insert
- EPIC® H-A 3 panel-mount base
- Straight version
- Housing: thermoplastic grey

Article number	Pieces / PU
H-A 3 Ag	
75009619	1

Article numbers for single components

- H-A 4 BS 10432000
- H-A 3 Ags 10423000

EPIC KIT H-A 4 BS AGS



- EPIC® H-A 4 screw termination female insert
- EPIC® H-A 3 panel-mount base
- Angled version
- Housing: thermoplastic grey

Article number	Pieces / PU
H-A 3 Ags	
75009621	1

Article numbers for single components

- H-A 4 BS 10432000
- H-A 3 Agsv M20 19421900

EPIC KIT H-A 4 BS AGS M20



- EPIC® H-A 4 screw termination female insert
- EPIC® H-A 3 panel-mount base
- Angled version
- Housing: thermoplastic grey

Article number	Pieces / PU
H-A 3 Agsv M20	
75009623	1

Article numbers for single components

- H-A 4 BS 10432000
- H-A 3 Tgvb M20 19429000

EPIC KIT H-A 4 BS TGB M20



- EPIC® H-A 4 screw termination female insert
- EPIC® H-A 3 cable coupler hood
- Straight cable entry
- Housing: thermoplastic grey



EPIC® H-A 4 Kits Metal

Benefits

- Pre-packed kits with compatible components
- Uncomplicated ordering
- No misplaced orders

Similar products

- EPIC® H-A 4 Kits Thermoplastic

Technical data

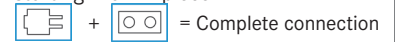
Rated voltage (V)
IEC: 400 V
UL: 600 V
CSA: 600 V

Rated current (A)
IEC: 23 A
UL: 10 A
CSA: 10 A

Number of contacts
4 + PE

Info

- Complete connectors - easy to order starting from 1 piece



EPIC KIT H-A 4 SS MTG M20



- EPIC® H-A 4 screw-termination male insert
- EPIC® H-A 3 hood
- Straight cable entry
- Housing: zinc die-casting, grey

Article number	Pieces / PU
EPIC® H-A 4 Kits Metal	
75009614	1

Article numbers for single components

- H-A 4 SS 10431000)
- H-A 3 MTgv M20 19512100



EPIC KIT H-A 4 SS MTS M20



- EPIC® H-A 4 screw-termination male insert
- EPIC® H-A 3 hood
- Side cable entry
- Housing: zinc die-casting, grey

Article number	Pieces / PU
H-A 3 MTgv M20	
75009616	1

Article numbers for single components

- H-A 4 SS 10431000
- H-A 3 Ts M20 19512300



EPIC KIT H-A 4 BS MAG

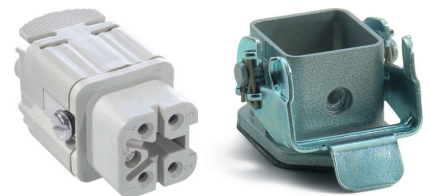


- EPIC® H-A 4 screw termination female insert
- EPIC® H-A 3 panel-mount base
- Straight version
- Housing: zinc die-casting, grey

Article number	Pieces / PU
H-A 3 Ts M20	
75009618	1

Article numbers for single components

- H-A 4 BS 10432000
- H-A 3 Mag 10422500



EPIC KIT H-A 4 BS MAGS

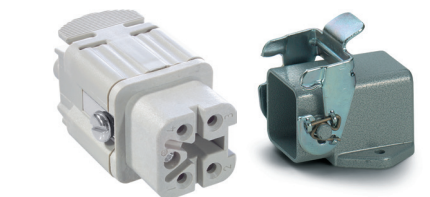


- EPIC® H-A 4 screw termination female insert
- EPIC® H-A 3 panel-mount base
- Angled version
- Housing: zinc die-casting, grey

Article number	Pieces / PU
H-A 3 Mag	
75009620	1

Article numbers for single components

- H-A 4 BS 10432000
- H-A 3 Mags 10423500



EPIC KIT H-A 4 BS MAGS M20

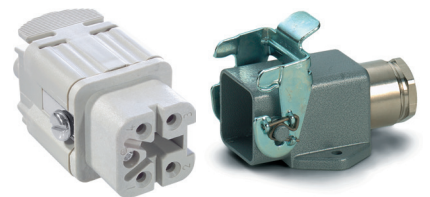


- EPIC® H-A 4 screw termination female insert
- EPIC® H-A 3 panel-mount base
- Angled version
- Housing: zinc die-casting, grey

Article number	Pieces / PU
H-A 3 Mags	
75009622	1

Article numbers for single components

- H-A 4 BS 10432000
- H-A 3 MAGsv M20 19512700



EPIC KIT H-A 4 BS TGB M20

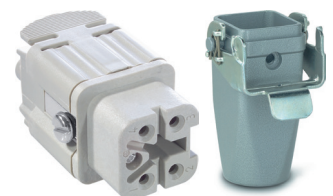


- EPIC® H-A 4 screw termination female insert
- EPIC® H-A 3 cable coupler hood
- Straight cable entry
- Housing: zinc die-casting, grey

Article number	Pieces / PU
H-A 3 MAGsv M20	
75009624	1

Article numbers for single components

- H-A 4 BS 10432000
- H-A 3 MTgvb M20 19512900





EPIC® H-A 10 Kits

Benefits

- Pre-packed kits with compatible components
- Uncomplicated ordering
- No misplaced orders

Technical data

Rated voltage (V)
IEC: 250 V
UL: 600 V
CSA: 600 V

Rated current (A)
IEC: 16 A
UL: 14 A
CSA: 16 A

Number of contacts
10 + PE

Info

- Complete connectors - easy to order starting from 1 piece

+ = Complete connection



Article number	Pieces / PU
EPIC® H-A 10 Kits	
75009625	1

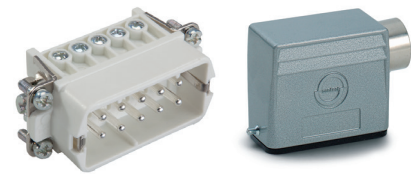
Article numbers for single components

- H-A 10 SS 10440100
- H-A 10 TG M20 19446000

EPIC KIT H-A 10 SS TG M20



- EPIC® H-A 10 screw-termination male insert
- With wire protection
- EPIC® H-A 10 hood



Article number	Pieces / PU
H-A 10 TG M20	
75009626	1

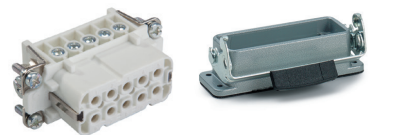
Article numbers for single components

- H-A 10 SS 10440100
- H-A 10 TS M20 19445000

EPIC KIT H-A 10 SS TS M20



- EPIC® H-A 10 screw-termination male insert
- With wire protection
- EPIC® H-A 10 hood



Article number	Pieces / PU
H-A 10 TS M20	
75009627	1

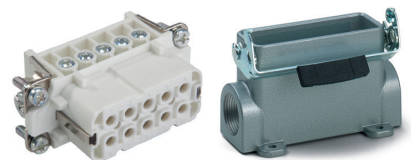
Article numbers for single components

- H-A 10 BS 10441100
- H-A 10 AG-LB 10442000

EPIC KIT H-A 10 BS AG



- EPIC® H-A 10 screw termination female insert
- With wire protection
- EPIC® H-A 10 panel-mount base



Article number	Pieces / PU
H-A 10 AG-LB	
75009628	1

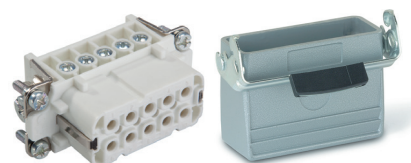
Article numbers for single components

- H-A 10 BS 10441100
- H-A 10 SGR-LB M20 19448100

EPIC KIT H-A 10 BS SGR-LB M20



- EPIC® H-A 10 screw termination female insert
- With wire protection
- EPIC® H-A 10 surface-mount base



Article number	Pieces / PU
H-A 10 SGR-LB M20	
75009629	1

Article numbers for single components

- H-A 10 BS 10441100
- H-A 10 TBF-LB M20 19439000

EPIC KIT H-A 10 BS TBF-LB M20



- EPIC® H-A 10 screw termination female insert
- With wire protection
- EPIC® H-A 10 cable coupler hood



EPIC® H-A 16 Kits

Benefits

- Pre-packed kits with compatible components
- Uncomplicated ordering
- No misplaced orders

Technical data	
	Rated voltage (V) IEC: 250 V UL: 600 V CSA: 600 V
	Rated current (A) IEC: 16 A UL: 14 A CSA: 16 A
	Number of contacts 16 + PE

Info

- Complete connectors - easy to order starting from 1 piece

+ = Complete connection

EPIC KIT H-A 16 SS TG M20



- EPIC® H-A 16 screw-termination male insert
- With wire protection
- EPIC® H-A 16 hood

Article number	Pieces / PU
EPIC® H-A 16 Kits	
75009630	1

- Article numbers for single components**
- H-A 16 SS 10530000
 - H-A 16 TG M20 19565000



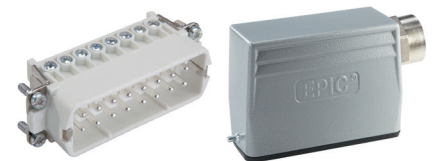
EPIC KIT H-A 16 SS TS M20



- EPIC® H-A 16 screw-termination male insert
- With wire protection
- EPIC® H-A 16 hood

Article number	Pieces / PU
H-A 16 TG M20	
75009631	1

- Article numbers for single components**
- H-A 16 SS 10530000
 - H-A 16 TS M20 19564000



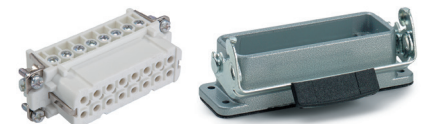
EPIC KIT H-A 16 BS AG



- EPIC® H-A 16 screw termination female insert
- With wire protection
- EPIC® H-A 16 panel-mount base

Article number	Pieces / PU
H-A 16 TS M20	
75009632	1

- Article numbers for single components**
- H-A 16 BS 10531000
 - H-A 16 AG-LB 10462000



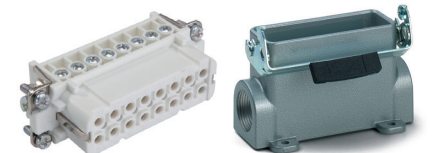
EPIC KIT H-A 16 BS SGR-LB M20



- EPIC® H-A 16 screw termination female insert
- With wire protection
- EPIC® H-A 16 surface-mount base

Article number	Pieces / PU
H-A 16 AG-LB	
75009633	1

- Article numbers for single components**
- H-A 16 BS 10531000
 - H-A 16 SGR-LB M20 19567100



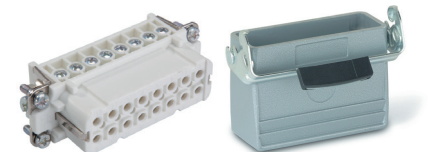
EPIC KIT H-A 16 BS TBF-LB M20



- EPIC® H-A 16 screw termination female insert
- With wire protection
- EPIC® H-A 16 cable coupler hood

Article number	Pieces / PU
H-A 16 SGR-LB M20	
75009634	1

- Article numbers for single components**
- H-A 16 BS 10531000
 - H-A 16 TBF-LB M20 19563000





EPIC® H-BE 6 Kits

Benefits

- Pre-packed kits with compatible components
- Uncomplicated ordering
- No misplaced orders

Technical data

Rated voltage (V)
IEC: 500 V
UL: 600 V
CSA: 600 V

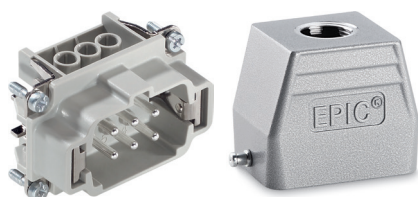
Rated current (A)
IEC: 16 A
UL: 16 A
CSA: 16 A

Number of contacts
6 + PE

Info

- Complete connectors - easy to order starting from 1 piece

+ = Complete connection



Article number	Pieces / PU
EPIC® H-BE 6 Kits	
75009635	1

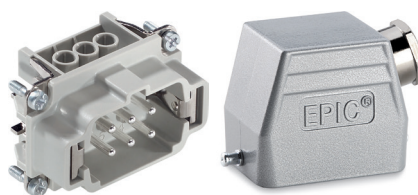
Article numbers for single components

- EPIC® H-BE 6 SS 10190000
- H-B 6 TG M20 19011000

EPIC® KIT H-BE 6 SS TG M20



- EPIC® H-BE 6 screw-termination male insert
- With wire protection
- EPIC® H-B 6 hood



Article number	Pieces / PU
H-B 6 TG M20	
75009636	1

Article numbers for single components

- EPIC® H-BE 6 SS 10190000
- H-B 6 TS M20 19012000

EPIC® KIT H-BE 6 SS TS M20



- EPIC® H-BE 6 screw-termination male insert
- With wire protection
- EPIC® H-B 6 hood



Article number	Pieces / PU
H-B 6 TS M20	
75009637	1

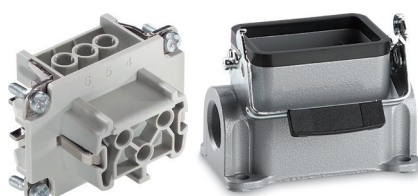
Article numbers for single components

- EPIC® H-BE 6 BS 10191000
- H-B 6 AG-LB 10003000

EPIC® KIT H-BE 6 BS AG-LB



- EPIC® H-BE 6 screw termination female insert
- With wire protection
- EPIC® H-B 6 panel-mount base



Article number	Pieces / PU
H-B 6 AG-LB	
75009638	1

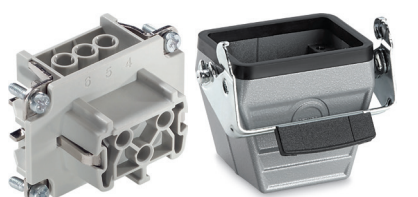
Article numbers for single components

- EPIC® H-BE 6 BS 10191000
- H-B 6 SGR M20 19005000

EPIC® KIT H-BE 6 BS SGR-LB M20



- EPIC® H-BE 6 screw termination female insert
- With wire protection
- EPIC® H-B 6 surface-mount base



Article number	Pieces / PU
H-B 6 SGR M20	
75009639	1

Article numbers for single components

- EPIC® H-BE 6 BS 10191000
- H-B 6 TBF M20 19014000

EPIC® KIT H-BE 6 BS TBF-LB M20



- EPIC® H-BE 6 screw termination female insert
- With wire protection
- EPIC® H-B 6 cable coupler hood



EPIC® H-BE 10 Kits

Benefits

- Pre-packed kits with compatible components
- Uncomplicated ordering
- No misplaced orders

Technical data	
	Rated voltage (V) IEC: 500 V UL: 600 V CSA: 600 V
	Rated current (A) IEC: 16 A UL: 16 A CSA: 16 A
	Number of contacts 10 + PE

Info

- Complete connectors - easy to order starting from 1 piece

+ = Complete connection

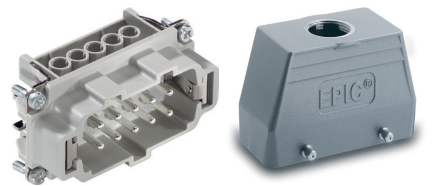
EPIC® KIT H-BE 10 SS TG M25



- EPIC® H-BE 10 screw-termination male insert
- With wire protection
- EPIC® H-B 10 hood

Article number	Pieces / PU
EPIC® H-BE 10 Kits	
75009640	1

- Article numbers for single components**
- EPIC® H-BE 10 SS 10192000
 - H-B 10 TG M25 19040100



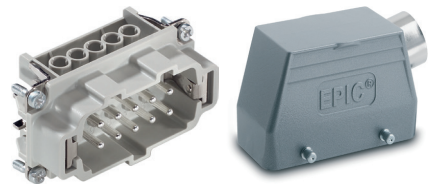
EPIC® KIT H-BE 10 SS TS M25



- EPIC® H-BE 10 screw-termination male insert
- With wire protection
- EPIC® H-B 10 hood

Article number	Pieces / PU
H-B 10 TG M25	
75009641	1

- Article numbers for single components**
- EPIC® H-BE 10 SS 10192000
 - H-B 10 TS M25 19042100



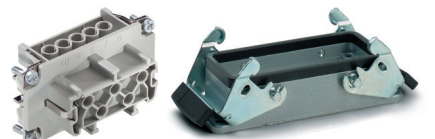
EPIC KIT H-BE 10 BS AG



- EPIC® H-BE 10 screw termination female insert
- With wire protection
- EPIC® H-B 10 panel-mount base

Article number	Pieces / PU
H-B 10 TS M25	
75009642	1

- Article numbers for single components**
- EPIC® H-BE 10 BS 10193000
 - H-B 10 AG 10032000



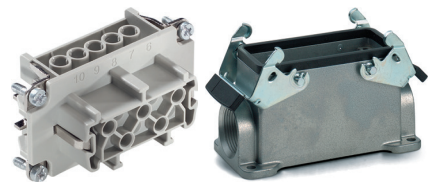
EPIC KIT H-BE 10 BS SGR M25



- EPIC® H-BE 10 screw termination female insert
- With wire protection
- EPIC® H-B 10 surface-mount base

Article number	Pieces / PU
H-B 10 AG	
75009643	1

- Article numbers for single components**
- EPIC® H-BE 10 BS 10193000
 - H-B 10 SGR M25 19034100



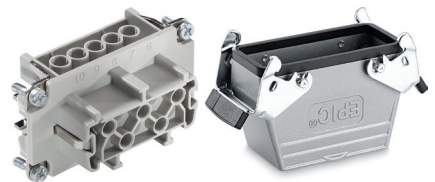
EPIC® KIT H-BE 10 BS TBF M25



- EPIC® H-BE 10 screw termination female insert
- With wire protection
- EPIC® H-B 10 cable coupler hood

Article number	Pieces / PU
H-B 10 SGR M25	
75009644	1

- Article numbers for single components**
- EPIC® H-BE 10 BS 10193000
 - H-B 10 TBF M25 79040200





EPIC® H-BE 16 Kits

Benefits

- Pre-packed kits with compatible components
- Uncomplicated ordering
- No misplaced orders

Technical data

Rated voltage (V)
IEC: 500 V
UL: 600 V
CSA: 600 V

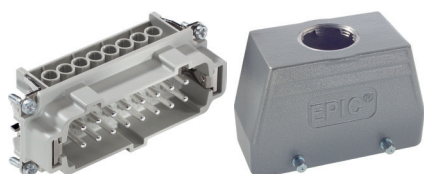
Rated current (A)
IEC: 16 A
UL: 16 A
CSA: 16 A

Number of contacts
16 + PE

Info

- Complete connectors - easy to order starting from 1 piece

= Complete connection



Article number	Pieces / PU
EPIC® H-BE 16 Kits	
75009645	1

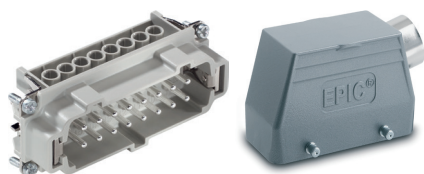
Article numbers for single components

- EPIC® H-BE 16 SS 10194000
- H-B 16 TG M25 19080000

EPIC® KIT H-BE 16 SS TG M25



- EPIC® H-BE 16 screw termination female insert
- With wire protection
- EPIC® H-B 16 hood



Article number	Pieces / PU
H-B 16 TG M25	
75009646	1

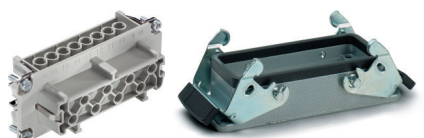
Article numbers for single components

- EPIC® H-BE 16 SS 10194000
- H-B 16 TS M25 19082000

EPIC® KIT H-BE 16 SS TS M25



- EPIC® H-BE 16 screw termination female insert
- With wire protection
- EPIC® H-B 16 hood



Article number	Pieces / PU
H-B 16 TS M25	
75009647	1

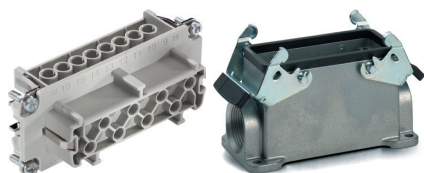
Article numbers for single components

- EPIC® H-BE 16 BS 10195000
- H-B 16 AG 10072000

EPIC® KIT H-BE 16 BS AG



- EPIC® H-BE 16 screw termination female insert
- With wire protection
- EPIC® H-B 16 panel-mount base



Article number	Pieces / PU
H-B 16 AG	
75009648	1

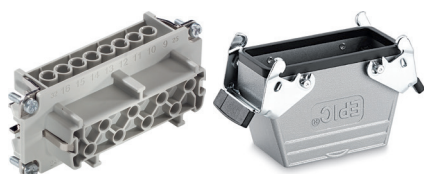
Article numbers for single components

- EPIC® H-BE 16 BS 10195000
- H-B 16 SGR M25 19074000

EPIC® KIT H-BE 16 BS SGR M25



- EPIC® H-BE 16 screw termination female insert
- With wire protection
- EPIC® H-B 16 surface-mount base



Article number	Pieces / PU
H-B 16 SGR M25	
75009649	1

Article numbers for single components

- EPIC® H-BE 16 BS 10195000
- H-B 16 TBF M25 19086000)

EPIC® KIT H-BE 16 BS TBF M25



- EPIC® H-BE 16 screw termination female insert
- With wire protection
- EPIC® H-B 16 cable coupler hood



EPIC® H-BE 24 Kits

Benefits

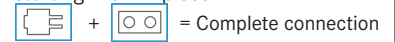
- Pre-packed kits with compatible components
- Uncomplicated ordering
- No misplaced orders

Technical data

- Rated voltage (V)**
IEC: 500 V
UL: 600 V
CSA: 600 V
- Rated current (A)**
IEC: 16 A
UL: 16 A
CSA: 16 A
- Number of contacts**
24 + PE

Info

- Complete connectors - easy to order starting from 1 piece



EPIC® KIT H-BE 24 SS TG M25

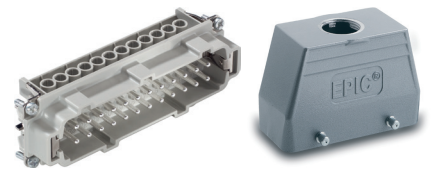


- EPIC® H-BE 24 screw-termination male insert
- With wire protection
- EPIC® H-B 24 hood

Article number	Pieces / PU
EPIC® H-BE 24 Kits	
75009650	1

Article numbers for single components

- EPIC® H-BE 24 SS 10196000
- H-B 24 TG M25 19121000



EPIC® KIT H-BE 24 SS TS M25

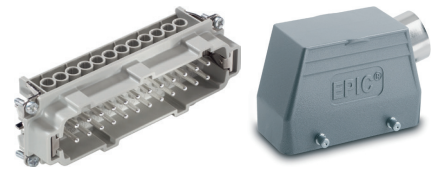


- EPIC® H-BE 24 screw-termination male insert
- With wire protection
- EPIC® H-B 24 hood

Article number	Pieces / PU
H-B 24 TG M25	
75009651	1

Article numbers for single components

- EPIC® H-BE 24 SS 10196000
- H-B 24 TS M25 19113000



EPIC® KIT H-BE 24 BS AG



- EPIC® H-BE 24 screw termination female insert
- With wire protection
- EPIC® H-B 24 panel-mount base

Article number	Pieces / PU
H-B 24 TS M25	
75009652	1

Article numbers for single components

- EPIC® H-BE 24 BS 10197000
- H-B 24 AG 10102000



EPIC® KIT H-BE 24 BS SGR M25

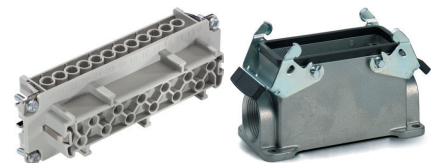


- EPIC® H-BE 24 screw termination female insert
- With wire protection
- EPIC® H-B 24 surface-mount base

Article number	Pieces / PU
H-B 24 AG	
75009653	1

Article numbers for single components

- EPIC® H-BE 24 BS 10197000
- H-B 24 SGR M25 19104000



EPIC® KIT H-BE 24 BS TBF M25

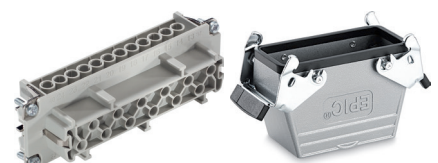


- EPIC® H-BE 24 screw termination female insert
- With wire protection
- EPIC® H-B 24 cable coupler hood

Article number	Pieces / PU
H-B 24 SGR M25	
75009654	1

Article numbers for single components

- EPIC® H-BE 24 BS 10197000
- H-B 24 TBF M25 19127000





EPIC® SIGNAL M23 Kits 12pole

Benefits

- Uncomplicated ordering
- No misplaced orders
- Pre-packed kits with compatible components

Technical data

	Rated voltage (V) 100 V (1 mm contacts)
	Rated current (A) 7 A (1 mm contacts)
	Number of contacts 12

Info

- Complete connectors - easy to order starting from 1 piece

+ = Complete connection



Article number	Pieces / PU
EPIC® SIGNAL M23 Kits 12pole	
75009710	1

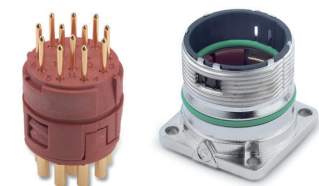
Article numbers for single components

- E-Part 73002722
- M23 D6 44420037

EPIC® KIT M23 D6 12-POL FEMALE



- EPIC® M23 12-pin solder termination female insert
- Max. cross-section 1.0 mm²
- E-Part, rotation to the right, clockwise
- D6 cable connector, clamping range 7.0 - 13.5 mm



Article number	Pieces / PU
M23 A1	
75009711	1

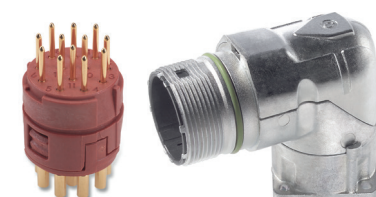
Article numbers for single components

- P-part 73002714
- M23 A1 72004000

EPIC® KIT M23 A1 12-POL MALE



- EPIC® M23 12-pin solder-termination male insert
- Max. cross-section 1.0 mm²
- P-part, rotation to the left, anticlockwise
- A1 panel-mount box, front wall mounting



Article number	Pieces / PU
M23 A3	
75009712	1

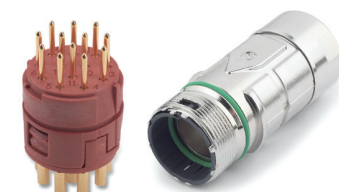
Article numbers for single components

- P-part 73002714
- M23 A3 24420055

EPIC® KIT M23 A3 12-POL MALE



- EPIC® M23 12-pin solder-termination male insert
- Max. cross-section 1.0 mm²
- P-part, rotation to the left, anticlockwise
- A3 panel-mount box, angled and rotatable, front wall mounting



Article number	Pieces / PU
M23 F6	
75009713	1

Article numbers for single components

- P-part 73002714
- M23 F6 44420040

EPIC® KIT M23 F6 12-POL MALE



- EPIC® M23 12-pin solder-termination male insert
- Max. cross-section 1.0 mm²
- P-part, rotation to the left, anticlockwise
- F6 cable coupler, clamping range 7.0 - 13.5 mm



EPIC® SIGNAL M23 Kits 12pole

Benefits

- Uncomplicated ordering
- No misplaced orders
- Pre-packed kits with compatible components

Technical data	
	Rated voltage (V) 100 V (1 mm contacts)
	Rated current (A) 7 A (1 mm contacts)
	Number of contacts 12

Info

- Complete connectors - easy to order starting from 1 piece

+ = Complete connection

EPIC® KIT M23 D6 12-POL FEMALE

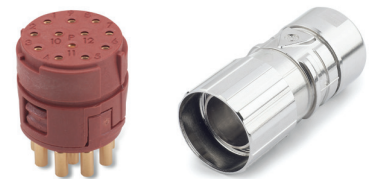


- EPIC® M23 12-pin solder termination female insert
- Max. cross-section 1.0 mm²
- P-part, rotation to the left, anticlockwise
- D6 cable connector, clamping range 7.0 - 13.5 mm

Article number	Pieces / PU
M23 D6	
75009702	1

Article numbers for single components

- P-part 73002716
- M23 D6 44420037



EPIC® KIT M23 A1 12-POL MALE

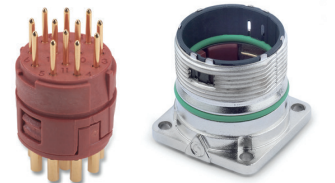


- EPIC® M23 12-pin solder-termination male insert
- Max. cross-section 1.0 mm²
- E-Part, rotation to the right, clockwise
- A1 panel-mount box, front wall mounting

Article number	Pieces / PU
M23 A1	
75009703	1

Article numbers for single components

- E-Part 73002720
- M23 A1 72004000



EPIC® KIT M23 A3 12-POL MALE

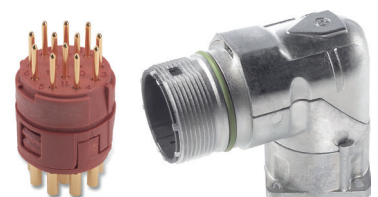


- EPIC® M23 12-pin solder-termination male insert
- Max. cross-section 1.0 mm²
- E-Part, rotation to the right, clockwise
- A3 panel-mount box, angled and rotatable, front wall mounting

Article number	Pieces / PU
M23 A3	
25009704	1

Article numbers for single components

- E-Part 73002720
- M23 A3 24420055



EPIC® KIT M23 F6 12-POL MALE



- EPIC® M23 12-pin solder-termination male insert
- Max. cross-section 1.0 mm²
- E-Part, rotation to the right, clockwise
- F6 cable coupler, clamping range 7.0 - 13.5 mm

Article number	Pieces / PU
M23 A3	
75009705	1

Article numbers for single components

- E-Part 73002720
- M23 F6 44420040





EPIC® SIGNAL M23 Kits 17pole

Benefits

- Uncomplicated ordering
- No misplaced orders
- Pre-packed kits with compatible components

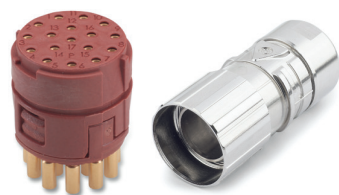
Technical data

	Rated voltage (V) 50 V (1 mm contacts)
	Rated current (A) 7 A (1 mm contacts)
	Number of contacts 17

Info

- Complete connectors - easy to order starting from 1 piece

+ = Complete connection



Article number	Pieces / PU
EPIC® SIGNAL M23 Kits 17pol.	
75009706	1

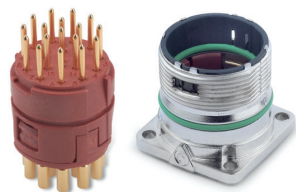
Article numbers for single components

- P-part 73018000
- M23 D6 44420037

EPIC KIT M23 D6 17-POL FEMALE



- EPIC® M23 17-pin solder termination female insert
- Max. cross-section 1.0 mm²
- P-part, rotation to the left, anticlockwise
- D6 cable connector, clamping range 7.0 - 13.5 mm



Article number	Pieces / PU
M23 D6	
75009707	1

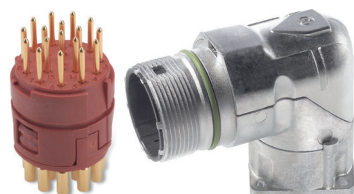
Article numbers for single components

- E-Part 73028500
- M23 A1 72004000

EPIC KIT M23 A1 17-POL MALE



- EPIC® M23 17-pin solder-termination male insert
- Max. cross-section 1.0 mm²
- E-Part, rotation to the right, clockwise
- A1 panel-mount box, front wall mounting



Article number	Pieces / PU
M23 A1	
25009708	1

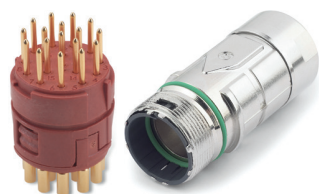
Article numbers for single components

- E-Part 73028500
- M23 A3 24420055

EPIC KIT M23 A3 17-POL MALE



- EPIC® M23 17-pin solder-termination male insert
- Max. cross-section 1.0 mm²
- E-Part, rotation to the right, clockwise
- A3 panel-mount box, angled and rotatable, front wall mounting



Article number	Pieces / PU
M23 A3	
75009709	1

Article numbers for single components

- E-Part 73028500
- M23 F6 44420040

EPIC KIT M23 F6 17-POL MALE



- EPIC® M23 17-pin solder-termination male insert
- Max. cross-section 1.0 mm²
- E-Part, rotation to the right, clockwise
- F6 cable coupler, clamping range 7.0 - 13.5 mm



EPIC® LS1 Kits 6pole

Benefits

- Pre-packed kits with compatible components
- Uncomplicated ordering
- No misplaced orders

Technical data	
	Rated voltage (V) 630 V (2 mm contacts)
	Rated current (A) 26A/3+PE+4, 25A/5+PE (2mm contacts)
	Number of contacts 5 + PE

Info

- Complete connectors - easy to order starting from 1 piece

+ = Complete connection

EPIC KIT LS1 D6 6-POL FEMALE



- Pin configuration 5+PE, for female contacts 2 mm Ø
- Machined crimp contacts 0.5 - 2.5 mm² are included
- D6 cable connector, clamping range 7.5 - 15.5 mm

Article number	Pieces / PU
EPIC® LS1 Kits 6pole	
75009690	1

Article numbers for single components

- LS1 D6 76123000



EPIC KIT LS1 A1 6-POL MALE



- Pin configuration 5+PE, for male contacts 2 mm Ø
- Machined crimp contacts 0.5 - 2.5 mm² are included
- A1 panel-mount box, front wall mounting

Article number	Pieces / PU
LS1 D6	
75009691	1

Article numbers for single components

- LS1 A1 76003000



EPIC KIT LS1 A3 6-POL MALE



- Pin configuration 5+PE, for male contacts 2 mm Ø
- Machined crimp contacts 0.5 - 2.5 mm² are included
- A3 panel-mount box, angled and rotatable, front wall mounting

Article number	Pieces / PU
LS1 A1	
75009692	1

Article numbers for single components

- LS1 A3 24420058



EPIC KIT LS1 F6 6-POL MALE



- Pin configuration 5+PE, for male contacts 2 mm Ø
- Machined crimp contacts 0.5 - 2.5 mm² are included
- F6 cable coupler, clamping range 7.5 - 15.5 mm

Article number	Pieces / PU
LS1 A3	
75009693	1

Article numbers for single components

- LS1 F6 76133000





EPIC® LS1 Kits 8pole

Benefits

- Uncomplicated ordering
- No misplaced orders
- Pre-packed kits with compatible components

Technical data

- Rated voltage (V)**
630 V (2 mm contacts)
250 V (1 mm contacts)
- Rated current (A)**
26A/3+PE+4, 25A/5+PE (2mm contacts)
7 A (1 mm contacts)
- Number of contacts**
3 + PE + 4

Info

- Complete connectors - easy to order starting from 1 piece

+ = Complete connection



Article number	Pieces / PU
EPIC® LS1 Kits 8pole	
75009694	1

Article numbers for single components

- LS1 D6 76124000

EPIC KIT LS1 D6 8-POL FEMALE



- Pin configuration 3+PE+4, for female contacts 2 mm Ø + 1 mm Ø
- Machined crimp contacts 0.5 - 2.5 mm² and 0.14 - 1.0 mm² are included
- D6 cable connector, clamping range 7.5 - 15.5 mm



Article number	Pieces / PU
LS1 D6	
75009695	1

Article numbers for single components

- LS1 A1 76004000

EPIC KIT LS1 A1 8-POL MALE



- Pin configuration 3+PE+4, for male contacts 2 mm Ø + 1 mm Ø
- Machined crimp contacts 0.5 - 2.5 mm² and 0.14 - 1.0 mm² are included
- A1 panel-mount box, front wall mounting



Article number	Pieces / PU
LS1 A1	
75009696	1

Article numbers for single components

- LS1 A3 24420056

EPIC KIT LS1 A3 8-POL MALE



- Pin configuration 3+PE+4, for male contacts 2 mm Ø + 1 mm Ø
- Machined crimp contacts 0.5 - 2.5 mm² and 0.14 - 1.0 mm² are included
- A3 panel-mount box, angled and rotatable, front wall mounting



Article number	Pieces / PU
LS1 A3	
75009697	1

Article numbers for single components

- LS1 F6 76134000

EPIC KIT LS1 F6 8-POL MALE

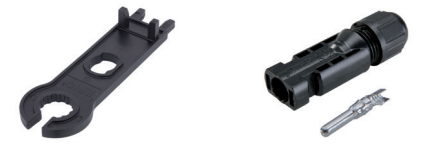
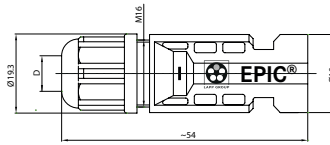


- Pin configuration 3+PE+4, for male contacts 2 mm Ø + 1 mm Ø
- Machined crimp contacts 0.5 - 2.5 mm² and 0.14 - 1.0 mm² are included
- F6 cable coupler, clamping range 7.5 - 15.5 mm



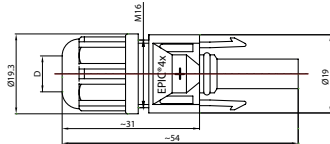
Info

- 4 mm connector system with double hook
- Field-mountable solar connector



Info

- 4 mm connector system with double hook
- Field-mountable solar connector



Benefits

- Low contact-resistance for efficient power transmission
- Crimp connection for field mounting
- Suitable for various ÖLFLEX® SOLAR cables

Application range

- Photovoltaic plants
- Crystalline and thin-film constructions
- Solartracker

Product features

- 4 mm connector system with double hook
- TÜV Rheinland certified
- Inclusive contacts

Suitable cables

- ÖLFLEX® SOLAR XLR-R
- ÖLFLEX® SOLAR XLR WP
- ÖLFLEX® SOLAR XLS-R
- ÖLFLEX® SOLAR XLR 1,5kV
- ÖLFLEX® SOLAR XLR 1,5kV WP
- ÖLFLEX® SOLAR XLc

Suitable tools

- EPIC® SOLAR TOOL
- For easier assembly of the plastic parts, use EPIC® SOLAR 4 Assembly Tool Set (2 pieces). Holder for insulation body, spanner for cap nut and pins for unlocking

Suitable connectors

EPIC® SOLAR 4 F

- EPIC® SOLAR 4 THIN
- EPIC® SOLAR 4 M
- EPIC® SOLAR 4Plus F


Technical data

	ETIM 5.0 Class-ID: EC002641 ETIM 5.0 Class-Description: Modular connector (industrial connector)
	Rated voltage (V) 1000 V AC/DC
	Rated impulse voltage 8 kV
	Degree of soiling 3
	Contact resistance < 0.5 mOhm
	Protection rating IP 67
	Protection class II
	Temperature range -40°C ... +105°C


Article number	Article designation	Cross-section (mm²)	Clamping range in mm	Rated current (A)	PU
EPIC® SOLAR 4 male field-mountable, inclusive contacts					
M4428200	EPIC® SOLAR 4 M 2.5 mm²	2.5	4.8 - 6.0	22	1
M4428201	EPIC® SOLAR 4 M 4mm² ... 6mm²	4 - 6	5.2 - 7.1	30	1
EPIC® SOLAR 4 female field-mountable, inclusive contacts					
M4428203	EPIC® SOLAR 4 F 2.5 mm²	2.5	5.2 - 6.5	22	1
M4428204	EPIC® SOLAR 4 F 4mm² ... 6mm²	4 - 6	5.0 - 7.2	30	1
EPIC® SOLAR 4 assembly tool					
44428224	EPIC® SOLAR 4 Assembly Tool Set				1

Photographs are not to scale and do not represent detailed images of the respective products.

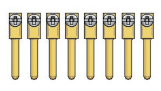
Table 31-1: EPIC® rectangular connectors



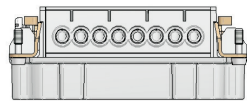
① **1. Cable Gland:**
The Cable Gland provides a seal between the cable and the connector housing. It may also be used to offer additional functions like strain relief and and braid continuity for EMC protection.



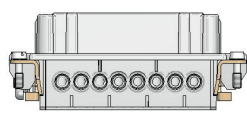
② **2. Upper housing:**
Hood



③ **3. Male insert:**
Types of contact termination
• Screw
• Crimp*
• Cage clamp
• Push-In



④ **4. Female insert:**
Types of contact termination
• Screw
• Crimp*
• Cage clamp
• Push-In



⑤ **5. Lower housing:**
• Panel mounting (cable entry though cut out in panel)
• Surface mounting (cable entry through a gland into the side of the connector base)
• Cable Connector Hood, cable to cable connection

* contacts must be ordered separately

Please pay attention on the EPIC® Selection table A10, this table is a great guide in helping you to find the right insert and suitable housings. It is particularly convenient using the connector with the connectorfinder in the internet (www.lappgroup.com/connectorfinder) and the connector housing configurator for customized solutions (www.lappgroup.com/connector-housing). You will also find configured connector kits in our webcatalogue.

High variety of applications with EPIC® rectangular connectors:

- Number of pins from 1 up to 216
- Currents up to 220A
- Voltage up to 1.000V
- Modular system with inserts for power supply, signal and data transmission, fiber optics, coax connection and compressed air
- Termination technologies: Screw, crimp, cage clamp, solder, Push-In
- Housings for cable connection and for the assembly on devices
- **Degree of protection** (depends on the type of housing and the cable gland. Therefore we recommend to use a brass gland with integrated sealing ring for example SKINTOP® MS-M.)
- **EMC protection** (For applications with EMC requirements, we recommend the EPIC® ULTRA in combination with the SKINTOP® BRUSH.)

TIP: Only use tools recommended and approved by Lapp. This ensures the safe and long-term operation of the connector. An assurance of the technical characteristics, as well as the validity of the certificates can only be given if all components are used exclusively by Lapp.

WARNING: EPIC® industrial connectors may not be connected or disconnected under load.

Table 31-2: EPIC® housings and inserts

Hood (fig. 1):

It may have a top or angle (side) entry of different PG sizes to accommodate a wide range of cable diameters. The hood can be mated with either a surface or panel mounting base, or a cable coupler hood (for cable to cable connection).

Panel mount base (fig. 2):

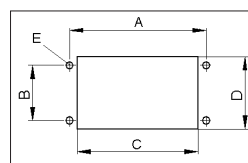
It is wired from below through a hole cut in a panel. The panel base is attached to the surface of a control panel for connection of control or power cables.

Surface mount base (fig. 3):

The surface base is a complete enclosure only offering cable entry through a cable gland mounted either on one or both sides of the base.

Cable Coupler (fig. 4):

The cable connector hood mates with a top entry hood to offer cable to cable connection. This is frequently used to extend cables.



Panel cut out for panel mount base (mm)					
Panel mount base	A	B	C	D	E
H-A 3	30	—	21	21	3.3
H-A 10	70	17.5	57.5	24	3.6
H-A 16	86	17.5	73.7	24	3.6
H-A 32	92	42	74.2	48.4	4.3
H-A 48	110	65	85.5	71	5.5
H-B 6	70	32	52.2	35	4.3
H-B 10	83	32	65.2	35	4.3
H-B 16	103	32	85.5	35	4.3
H-B 24	130	32	112.2	35	4.3
H-B 32	110	65	85.5	71	5.5
H-B 48	148	70	117	82	7

Screw connection technology (as DIN EN 60999)				
Screw thread	M3	M4	M5	M6
Starting torque Nm	0.5	1.2	2.0	2.5
Clamping screw: H-A, H-BE, H-BVE	•			
Clamping screw: H-BS		•		
Grounding screw: H-A, H-BE, H-BVE		•		
Grounding screw: H-BS			•	
Clamping screw: Module High-Current				•
Fixing screw: Inserts and Module frames	•			

All EPIC® connectors refer to IEC 61984.

Reach us around the world

...or closer to home. To contact your local Lapp Group representative:

Please visit

www.lappgroup.com/worldwide

Enter the world
of Lapp:



Our apps are available from the
following stores:



The following applies for the use of our products

The conformity of our products to the relevant European directives and compliance with the provisions contained therein shall be indicated by the CE marking.

The safety of our products is closely associated with how they are used. A knowledge of and adherence to the respective international/national standards of use (e.g. DIN VDE 0100; 0298) are manda-

tory. There are particular risks if installed improperly. This applies to all our products/items:

Processing is only to be done by an authorised electrician! Otherwise, there is the risk of an electric shock or a fire ignited by electric current!

Safety

Without exception, our products are tested for application safety in accordance with defined standards and our own regulations, which complement the standards. Relevant legal requirements and safety regulations are also observed. Provided due care and attention is paid, the possibility of product-specific danger to the user may thus reasonably be excluded. Where products are used carelessly or incorrectly, however, considerable danger to persons and the environ-

ment may arise. For this reason, our cables must only be processed and/or used responsibly by trained electricians or specialists. This catalogue contains general information for the application of each product. Independent of such information, the application standards DIN VDE 0298 and DIN VDE 0891 for cables will apply. Excerpts from these standards, as well as complementary selection and application tables, design and installation guidelines, are contained in the

tables in the appendix to this catalogue. Our machines and installation tools are - where necessary - designed in accordance with the machine guidelines and display the CE identification mark. It must be noted, however, that our machines and installation tools must only be used by trained specialist personnel and for the purpose for which they were designed.

©Copyright by U.I. Lapp GmbH. Reprinting or reproduction of the text or the illustrations may be made only with written approval and with correct indication of source. We reserve the right to make modifications to our products, especially those based on technical improvements or continued development. All illustrations and numerical data etc. are therefore without warranty and are subject to change.



ÖLFLEX®
Power and control cables



UNITRONIC®
Data communication systems



ETHERLINE®
Data communication systems
for ETHERNET technology



HITRONIC®
Optical transmission systems



EPIC®
Industrial connectors



SKINTOP®
Cable glands



SILVYN®
Protective cable conduit systems
and cable carrier systems



FLEXIMARK®
Marking systems

Follow the Lapp Group on



Terms of Trade:

Our general conditions of sale
can be downloaded from our website
www.lappgroup.com/terms



LAPP GROUP

www.lappgroup.com

To contact your local Lapp Group representative,
please visit www.lappgroup.com/worldwide