

NEW

SKINTOP® CUBE

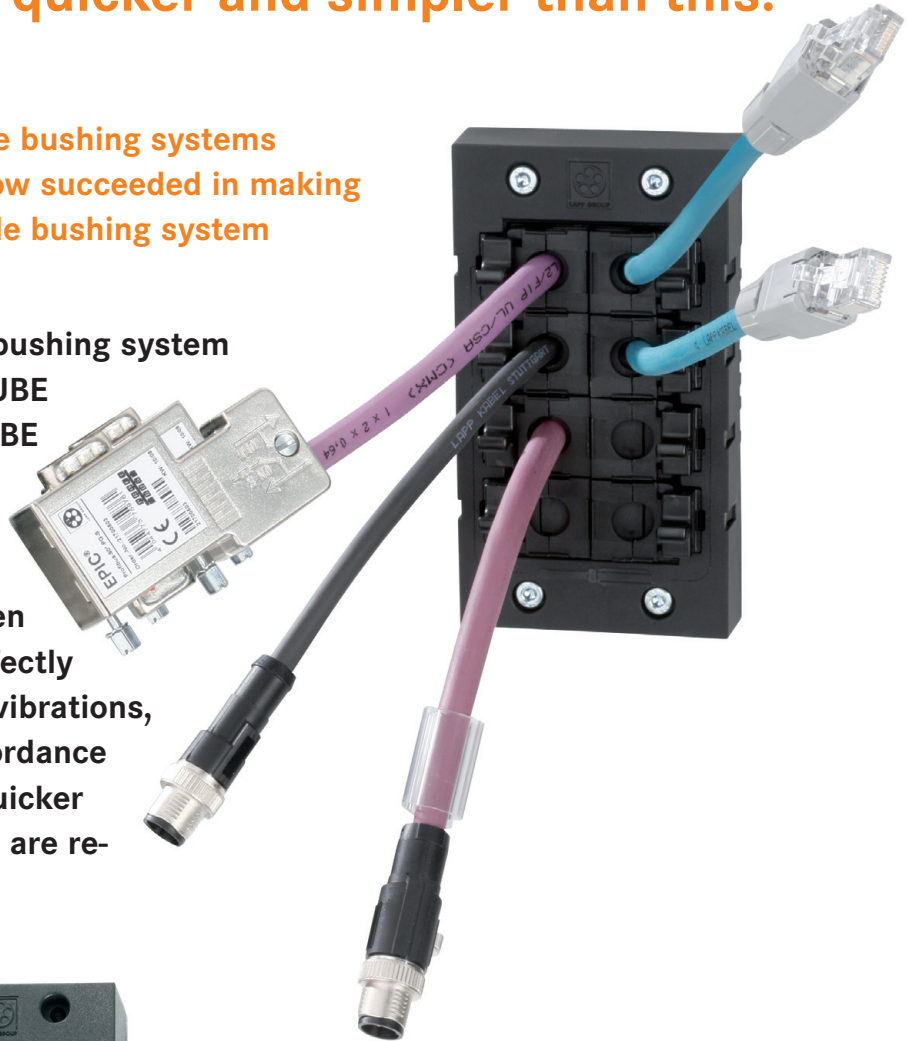
Simple. Flexible. Safe.



SKINTOP® CUBE – It doesn't come any quicker and simpler than this!

There are a number of multi cable bushing systems on the market. Lapp Kabel has now succeeded in making the basic principle of a multi cable bushing system even easier, faster and safer.

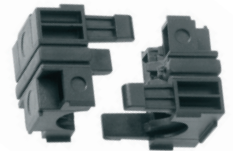
The SKINTOP® CUBE multi cable bushing system is made up of just a SKINTOP® CUBE FRAME and flexible SKINTOP® CUBE MODULES (clip sealing modules). These cubes can effortlessly be attached to the appropriate assembled cable. The cable is then clicked into the frame and is perfectly fixed in place, protected against vibrations, strain relieved and sealed in accordance with IP 64. It really couldn't be quicker and easier, as no additional parts are required to secure it.



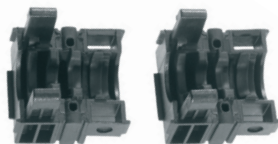
The sturdy, glass-fibre-reinforced polyamide SKINTOP® CUBE FRAMES are available in two sizes for 16-pole or 24-pole connector installation openings. This means that 8 to 10 cables of different diameters can be installed in minimal space.



modules have a variable clamping range, with the highly flexible sealing material ensuring optimum sealing of the cable at all times. 4 flexible modules are available: 4 to 6 mm, 6 to 9 mm, 9 to 12 mm and 12 to 16 mm. Blind modules are also available.



The flexible polyamide clip modules with specially developed, patented sealing system consist of two identical sections and can easily be fitted onto the cable without any special tools. Lubricants and sealants are not required either. The really outstanding feature is that the clip sealing

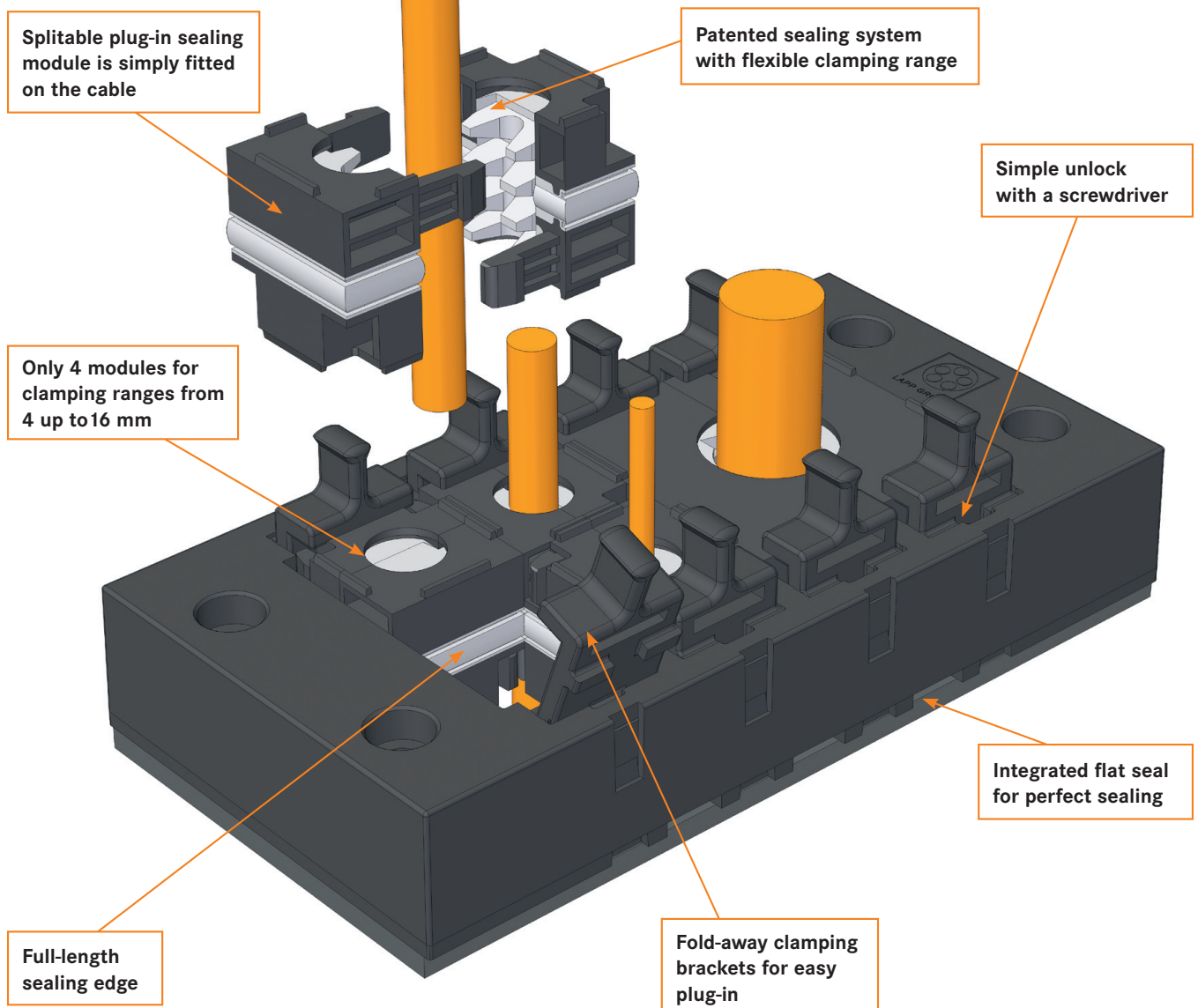


SKINTOP® CUBE MODULES can be removed from the frame by hand just as easily as they are installed. The frame remains on the housing. The major advantage of the SKINTOP® CUBE system is that the installation engineer can attach the cubes at the same time as assembling the cable with connectors. This saves a huge amount of time.



All advantages at one glance:

- Large, variable clamping range
- Simplified service due to easy assembling and disassembling
- No special tools sealants and lubricants required
- Frame remains on the housing, modules can be removed with the cable
- Strain relief
- Frame can be securely attached from inside and outside
- Degree of protection IP 64
- Resistant to oil, grease, ultraviolet rays and ozone

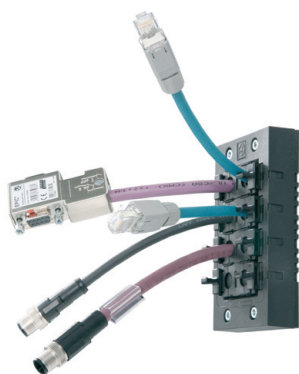


Cable glands

SKINTOP® Cable Bushing System

SKINTOP® Cable Bushing System

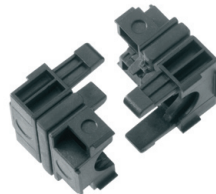
SKINTOP® CUBE



SKINTOP® CUBE



SKINTOP® CUBE FRAME



SKINTOP® CUBE MODULE



Info

- Innovative multi cable bushing system with variable clamping ranges for high assembling flexibility.
- In case of disassembling frame can remain on housing and clip module on the cable.

Benefits

- Large, variable clamping range
- Vibration safe fixed modules
- Strain relief
- Oil resistant
- Simplified service due to easy assembling and disassembling

Application range

- For installation of harnessed cables
- Everywhere where cables must be safely inserted into housings.
- Apparatus and switch cabinet construction
- Electronic installations
- Automation technology

Approvals (Norm references)



Design

- SKINTOP® CUBE consists of SKINTOP® CUBE FRAME and the flexible clip module SKINTOP® CUBE MODULE.
- For cut-outs for industrial connectors with standard defined bore holes.
- For cut-outs for 16-pole industrial connectors (36 x 86mm)
- For cut-outs for 24-pole industrial connectors (36 x 112mm)

Note

- SKINTOP® CUBE MODULE 40x40 SMALL, LARGE, BLIND available in April 2010

Scope of delivery

- SKINTOP® CUBE FRAME including mounting material

Suitable tools

- Kraftform Kompakt® 10

Technical data



Approvals

UL pending



Material

Frame: Glas fibre reinforced polyamide

Frame seal: CR

Clip Module: Special polyamide

Clip Module Seal: LSE 2



Degree of protection

IP 64



Range of temperature

-20°C up to +80°C

| Part number | Part designation / size | Clamping range ØF mm | Max. Number of executions | Pieces / PU |
|----------------------------------|----------------------------------|----------------------|---------------------------|-------------|
| SKINTOP® CUBE Frame | | | | |
| 52220000 | SKINTOP® CUBE FRAME 16 | | 8 | 1 |
| 52220001 | SKINTOP® CUBE FRAME 24 | | 10 | 1 |
| SKINTOP® CUBE Clip Module | | | | |
| 52220002 | SKINTOP® CUBE MODULE 20x20 SMALL | 4 - 6 | | 5 |
| 52220003 | SKINTOP® CUBE MODULE 20x20 LARGE | 6 - 9 | | 5 |
| 52220004 | SKINTOP® CUBE MODULE 20x20 BLIND | | | 5 |
| 52220005 | SKINTOP® CUBE MODULE 40x40 SMALL | 9 - 12 | | 5 |
| 52220006 | SKINTOP® CUBE MODULE 40x40 LARGE | 12 - 16 | | 5 |
| 52220007 | SKINTOP® CUBE MODULE 40x40 BLIND | | | 5 |

Comparable products

- SKINDICHT® Cable Bushing System CABLEFIX

Accessories

- SKINTOP® DIX-DV
- FLEXIMARK® LB-10 W



LAPP GROUP

www.lappgroup.com

To contact your local Lapp Group representative please visit www.lappgroup.com/worldwide