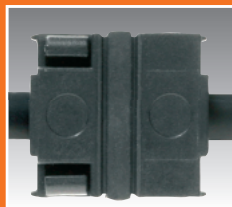
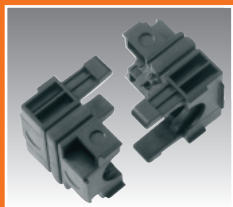
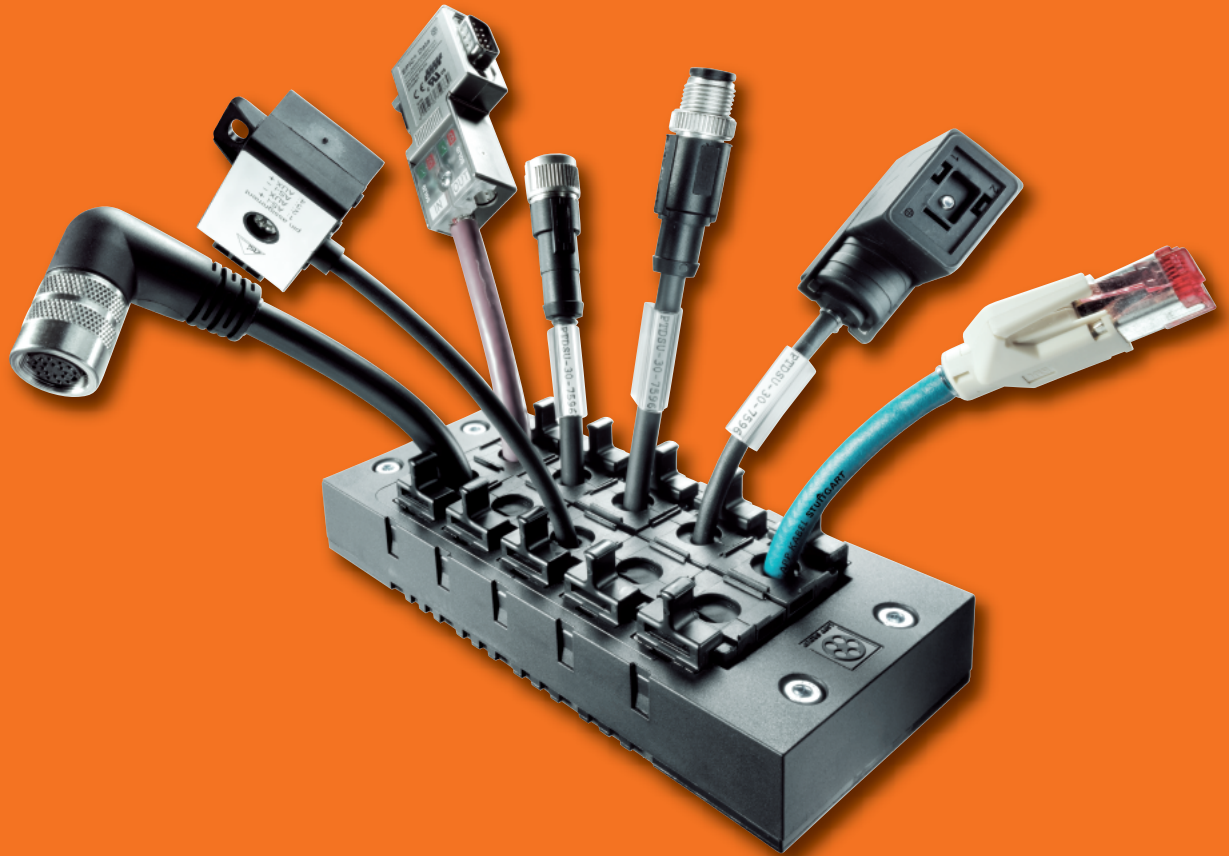


SKINTOP® CUBE

Simple. Flexible. Safe.

NEW!



LAPP GROUP

SKINTOP® CUBE

IT DOESN'T GET ANY QUICKER OR EASIER THAN THIS!

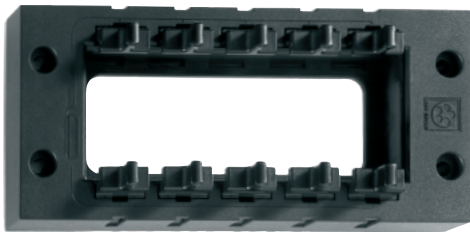
There are a number of multi-cable bushing systems on the market, however, Lapp Group has now succeeded in making the basic principles of a multi-cable bushing system even easier, faster and safer.

KEY PRODUCT FEATURES:

- The simple design of the SKINTOP® CUBE multi-cable bushing system is made up of a SKINTOP® CUBE FRAME and four flexible SKINTOP® CUBE MODULE options (clip sealing modules).
- The Cube modules can effortlessly be attached to the appropriate assembled cable.
- The cable is then clicked into the frame and perfectly fixed in place, protected against vibrations, strain relieved and sealed in accordance with IP 64.
- It couldn't be quicker or easier, as no additional parts are required to secure it.



SKINTOP® CUBE FRAME



KEY PRODUCT FEATURES:

- Sturdy, glassfiber reinforced polyamide.
- 16 or 24 pole connector installation openings.
- Handles 8 to 10 cables while using minimal space.

SKINTOP® CUBE MODULES



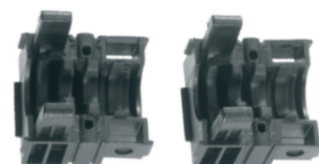
The flexible polyamide clip modules have a specially developed, patented sealing system, consisting of two identical sections that can easily be fitted onto the cable without any special tools, lubricants or sealants. The clip sealing modules offer an outstanding variable clamping range, due to our patented sealing system, ensuring optimum protection of the cable at all times.



KEY PRODUCT FEATURES:

- Modules are available in sizes:
 - 4 to 6mm
 - 6 to 9mm
 - 9 to 12mm
 - 12 to 16mm
- Blind modules
- Since the modules are perfectly square, with sealing rings on all sides, the direction of the module does not matter when being secured to the frame, where as competing modules can only be installed in one position.

SKINTOP® CUBE MODULES can be removed from the frame by hand just as easily as they are installed because the frame remains on the housing. Another major advantage of the SKINTOP® CUBE system is that the modules can be attached to the cable during assembly and delivered to production already prepared for quick installation, saving a tremendous amount of time and money.



SKINTOP® CUBE

PRODUCT ADVANTAGES

Easy assembly and disassembly

- The split modules can be inserted into the frame in any direction.
- No need to remove the frame from the enclosure during cable maintenance.
- No special tools, sealants or lubricants required.

Installation and repair savings

- Cube modules can be preassembled with cables, eliminating preparation at installation.
- Possible to remove one cube at a time from the frame.

Excellent strain relief and sealing protection

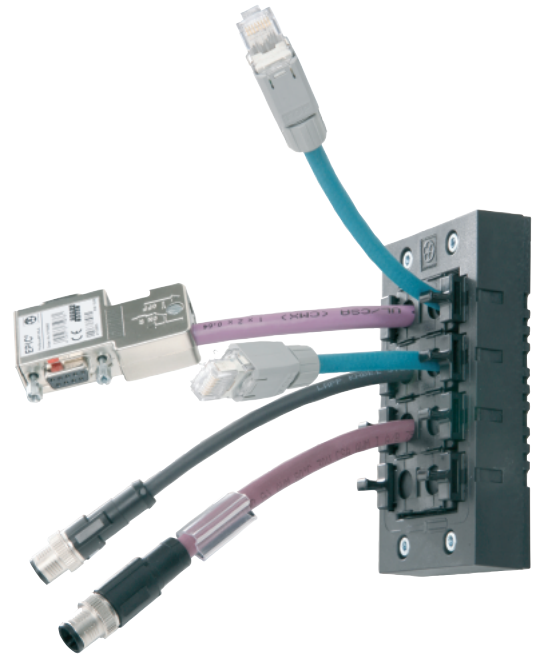
- Flexible modules with sealing on all 4 sides provide secure locked protection with an IP64 seal.

Reduced parts inventory

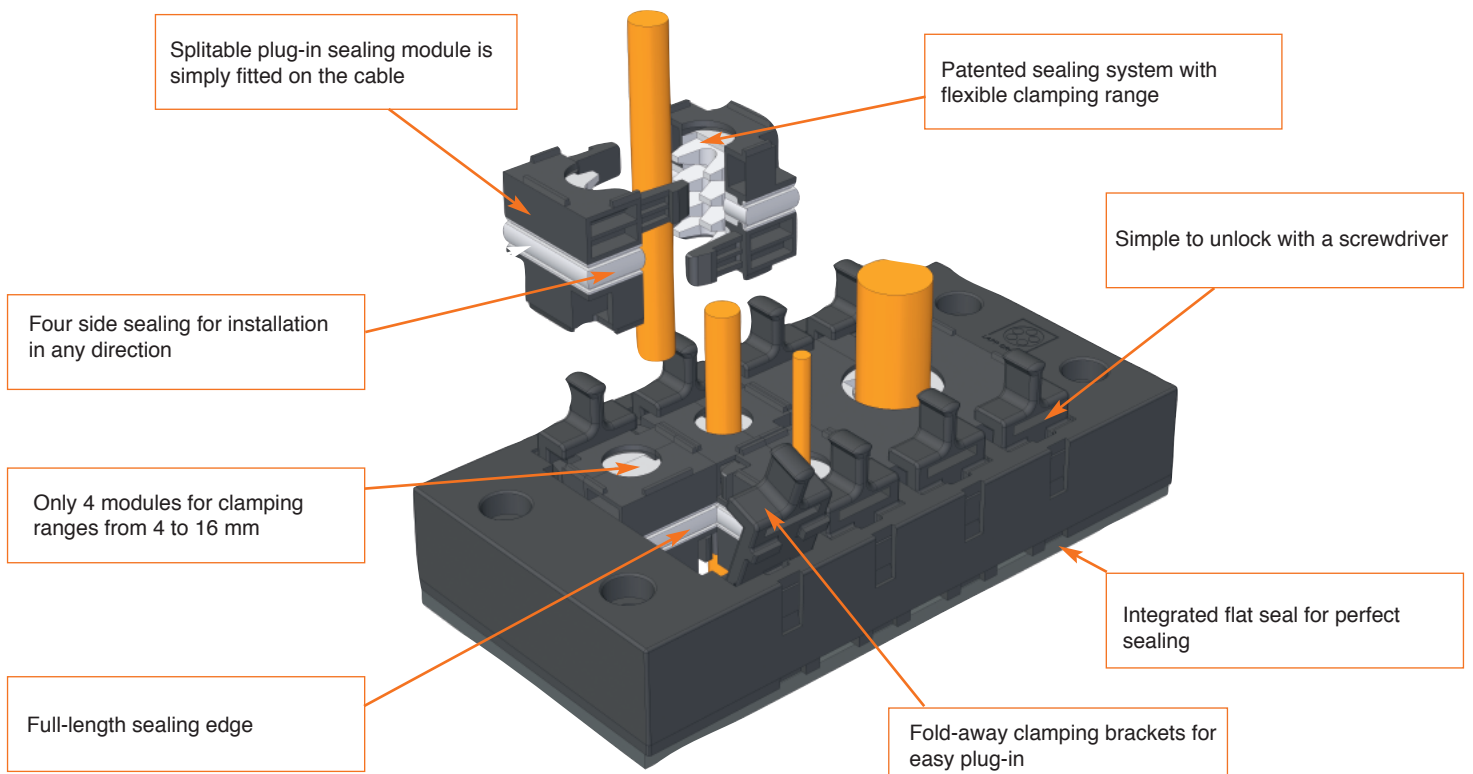
- Two frames and four module options with patented sealing system accommodate up to 10 cables with OD's ranging from 4-16mm.

Durable industrial cable protection

- Resistant to oil, grease, ultraviolet rays and ozone.



PRODUCT FEATURES



SKINTOP® CUBE



INNOVATIVE MULTI-CABLE BUSHING SYSTEM

SKINTOP® CUBE provides an innovative approach to traditional multi-cable bushing systems, providing many great improvements and advancements including increased simplicity, ease of use and safety.

The patented SKINTOP® CUBE flexible clip modules provide extremely quick and easy installation with far better sealing and clamping capabilities. Additionally, service to the cables is greatly simplified, as removing the frame from the enclosure is not necessary when updating cables.

APPLICATION ADVANTAGE:

- Faster and easier assembling and disassembling than other multi-cable bushing systems.
- Cable diameters ranging from 4-16 mm are covered with just four Cube Modules, greatly reducing inventory.
- Securely fixed Cube Modules can be assembled with the cable before installation in the SKINTOP® CUBE frame.
- The oil, grease, UV and ozone resistant materials make it the perfect solution for industrial applications where harnessed cables need to be installed.
- The SKINTOP® CUBE frame accommodates up to 8 to 10 cables and fits within standard 16 and 24 pole industrial connector entry holes.



SKINTOP®
CUBE



SKINTOP® CUBE
FRAME



SKINTOP® CUBE
MODULE

TECHNICAL DATA:

	Materials:	
	Frame:	Glass fiber reinforced polyamide
	Frame seal:	CR
	Clip Module:	Special polyamide
	Clip Module Seal:	LSE 2

Protection: IP 64

Temperature range: -20°C to +80°C

Color: Black

Part Number Black	Size	Clamping Range inches mm		Max # of Inserts	Standard Pack Size
SKINTOP® CUBE Frame					
52220000	16 Panel Cut-Out: (36 x 86 mm)			8	1
52220001	24 Panel Cut-Out: (36 x 112 mm)			10	1
SKINTOP® CUBE Clip Module					
52220002	20x20 Small Module	.157 - .236	4 - 6		5
52220003	20x20 Large Module	.236 - .354	6 - 9		5
52220004	20x20 Blank Module				5
52220005	40x40 Small Module	.354 - .472	9 - 12		5
52220006	40x40 Large Module	.472 - .629	12 - 16		5
52220007	40x40 Blank Module				5



Lapp USA
29 Hanover Road
Florham Park, NJ 07932

800-774-3539
www.lappusa.com

Lapp Canada
3505 Laird Road, Unit 10
Mississauga, Ontario L5L 5Y7

877-799-5277
www.lappcanada.com

Lapp Mexico
Metalurgia 2730
Alamo Industrial, C.P. 44490
Tlaquepaque, Jalisco

800-024-5277
www.lappmexico.com