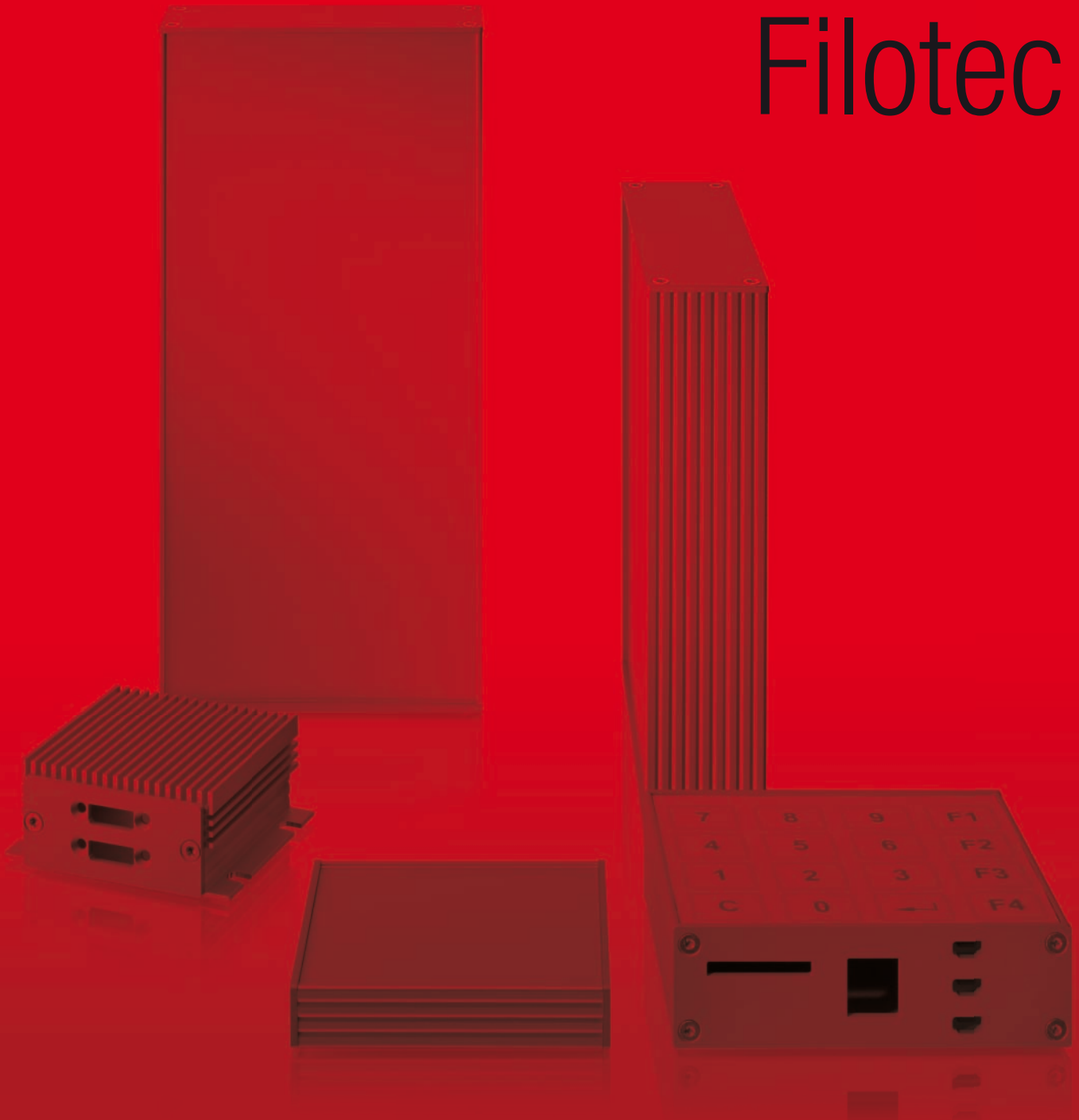




BOPLA

A Phoenix Mecano Company

Filotec



BOPLA: Always up-to-date.

Our product sectors:



Enclosure technology



Membrane keypads



Electronics services

For full details of BOPLA's range of products, please see our "the red book" catalogue or go to our www.bopla.de website.



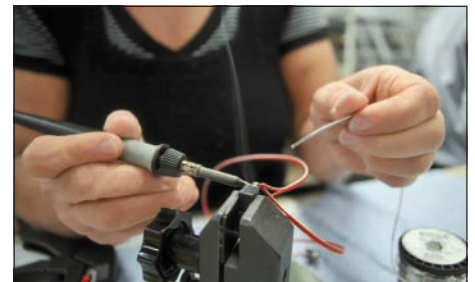
Service: Everything from a single source.

In addition to a comprehensive standard range of enclosures, membrane keypads and electronics services the development of customer-specific system solutions is an important part of what we can supply. There are many possibilities, including the design and manufacture of special enclosures, and the following services:

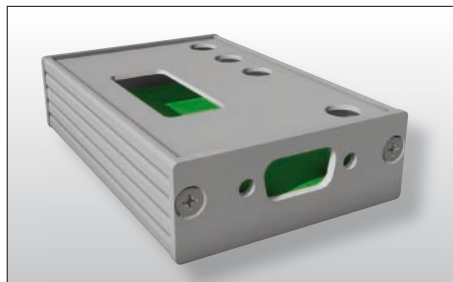
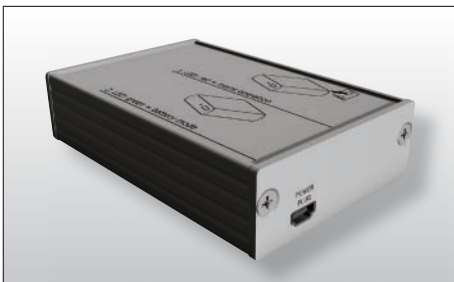
- **Individual forms of value-added processing**
(silk screen printing, engraving, etc.)
- **Mechanical processing**
(milling, cutting, ultrasonic welding, etc.)
- **Assembly work**
(gluing, adding components, etc.)
- **Soldering and connecting work**
(wiring, etc.)
- **Device production and test work**
(sample manufacture, approval tests, etc.)
- **Individual packaging**
(panel packaging, customer-specific labels, etc.)
- **Individual marking**
(seal, stickers, etc.)

An overview

Our processes:



Your results:



Provision of samples:

Would you like to experience the quality of BOPLA's products and form your own opinion? We will be happy to send you a sample of the enclosure you are interested in, and in the design that you want. We will

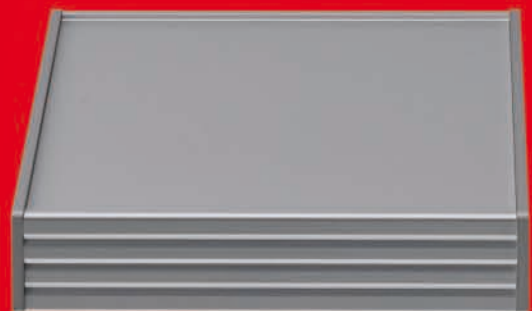
do this within a few working days – whether the article is mechanically processed, or assembled, you will be able to see, feel and test it for yourself.



Filotec

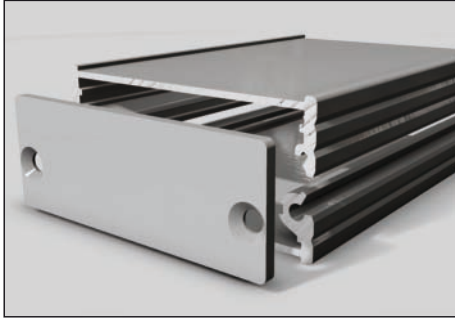
Aluminium profile enclosure series with many variants

- 78 standard enclosures, comprised of 4 widths, 2 or 3 heights, 3 variants and various standard lengths
- Profile variants: Variant with membrane keypad area (1 mm and 1.5 mm), variant with cooling fins, variant with moulded-on wall brackets
- Special lengths available at short notice
- Anodised aluminium end cover

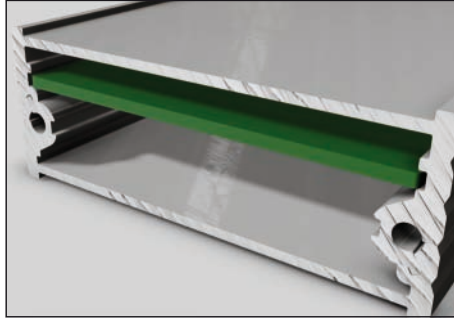


Colour	Natural-coloured anodised
Protection class	IP 40/DIN EN 60529
Enclosure material	Al Mg Si 0.5 anodised; for details, please see Technical Information in our main catalogue, "the red book"

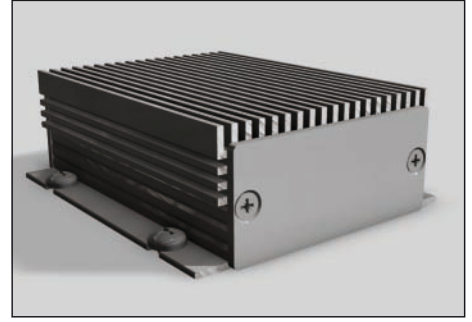




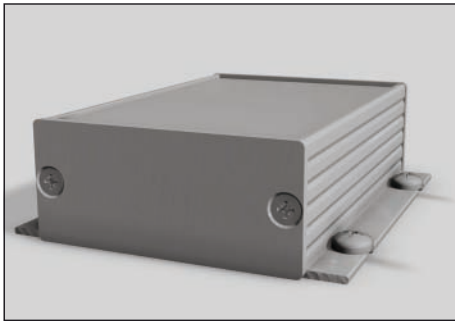
Filotec consists of two aluminium profile half-shells which are mounted with the help of the cover.



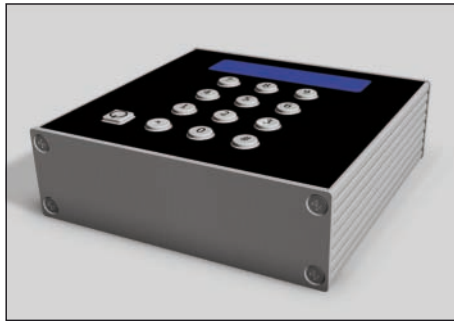
The enclosure profiles are equipped with grooves to hold PCBs or mounting panels.



In addition to the design with a membrane keypad area, the F 55 size offers as standard a version with external cooling fins on one side and moulded-on wall brackets on the other side.



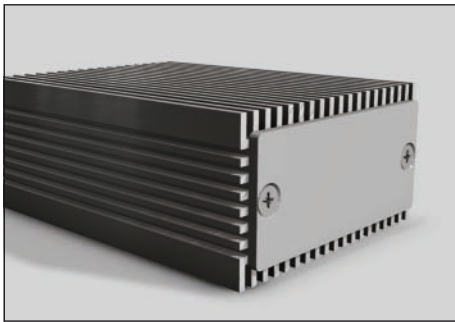
A profile with moulded-on wall brackets is also available in size F 55.



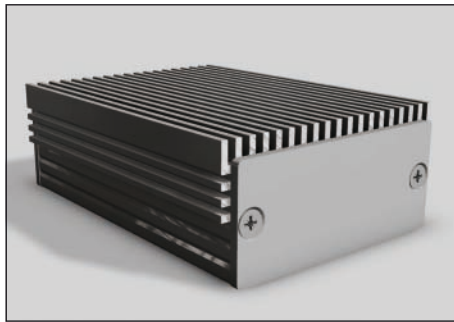
The profiles for sizes F 4.-..., F 5.-... and F 7.-... are all equipped with an area recessed by 1.0 mm to hold membrane keypads. F 10.-... profiles have an area recessed by 1.5 mm which is also suitable for Profiline keypads.



With their large usable area, the covers provide various opportunities for fitting connectors, applying printing, etc. We will be happy to carry out this work for you. For larger quantities, we recommend separate manufacture by BOPLA of the front panels including customer-specific processing because complete manufacture in a single process is more economical.



Combinations of size F 55 profiles with cooling fins on both sides are always available on request.

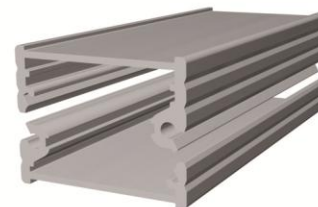


This combination of a profile with a membrane keypad area and a profile with cooling fins is also available in size F 55 on request.

Filotec 3...

Filotec enclosures with membrane keypad area (1 mm)

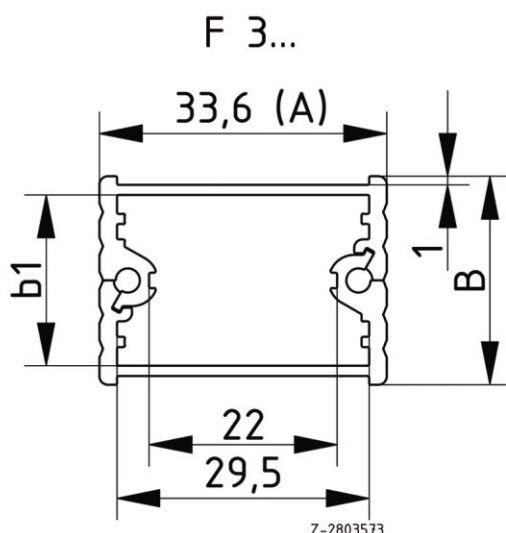
Model	Order no.	A	B	C	b1
F 316-50	97131050	33,6	16,4	50	12
F 316-80	97131080	33,6	16,4	80	12
F 316-1000	97131000*	33,6	16,4	1000	12
F 320-50	97132050	33,6	20,4	50	16
F 320-80	97132080	33,6	20,4	80	16
F 320-1000	97132000*	33,6	20,4	1000	16
F 324-50	97133050	33,6	24,4	50	20
F 324-80	97133080	33,6	24,4	80	20
F 324-1000	97133000*	33,6	24,4	1000	20



Scope of delivery: 2 enclosure half shells, 4 screws for mounting cover

Note: C = profile length, special lengths on request. Covers: See following pages. Please order separately.

* = supplied without screw accessory pack. Please order fixing screws (1 piece) separately: 59000175.



Filotec cover

Cover

Model	Order no.	Note
F 316 D	97633160	For F 316-...
F 320 D	97633200	For F 320-...
F 324 D	97633240	For F 324-...

Scope of delivery: Cover



Filotec 4...

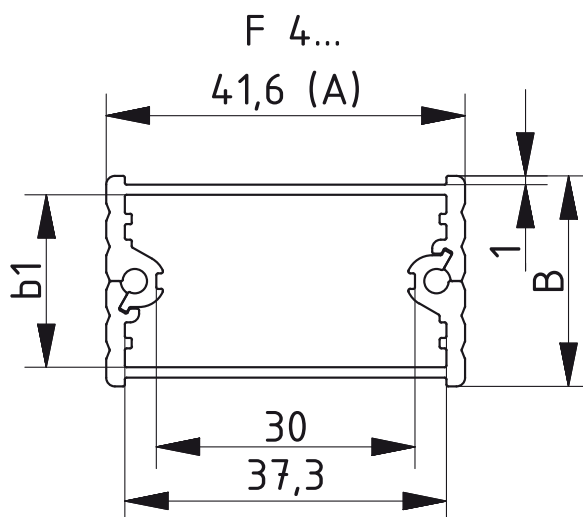
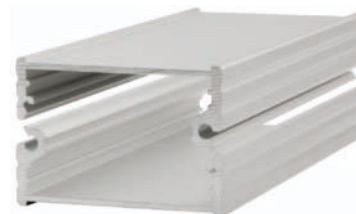
Filotec enclosures with membrane keypad area (1 mm)

Model	Order no.	A	B	C	b1
F 416-50	97141050	41,6	16,4	50	12
F 416-80	97141080	41,6	16,4	80	12
F 416-100	97141100	41,6	16,4	100	12
F 416-1000	97141000*	41,6	16,4	1000	12
F 420-50	97142050	41,6	20,4	50	16
F 420-80	97142080	41,6	20,4	80	16
F 420-100	97142100	41,6	20,4	100	16
F 420-1000	97142000*	41,6	20,4	1000	16
F 424-50	97143050	41,6	24,4	50	20
F 424-80	97143080	41,6	24,4	80	20
F 424-100	97143100	41,6	24,4	100	20
F 424-1000	97143000*	41,6	24,4	1000	20

Scope of delivery: 2 enclosure half shells, 4 screws for mounting cover

Note: C = profile length, special lengths on request. Covers: See following pages. Please order separately.

* = supplied without screw accessory pack. Please order fixing screws (1 piece) separately: 59000175.



Z-2803406

Filotec 5...



Filotec enclosures with membrane keypad area (1 mm)

Model	Order no.	A	B	C	b1
F 516-50	97151050	55,3	16,4	50	12
F 516-80	97151080	55,3	16,4	80	12
F 516-100	97151100	55,3	16,4	100	12
F 516-1000	97151000*	55,3	16,4	1000	12
F 520-50	97152050	55,3	20,4	50	16
F 520-80	97152080	55,3	20,4	80	16
F 520-100	97152100	55,3	20,4	100	16
F 520-1000	97152000*	55,3	20,4	1000	16
F 524-50	97153050	55,3	24,4	50	20
F 524-80	97153080	55,3	24,4	80	20
F 524-100	97153100	55,3	24,4	100	20
F 524-1000	97153000*	55,3	24,4	1000	20

Note: C = profile length, special lengths on request. Covers: See following pages. Please order separately.

* = supplied without screw accessory pack. Please order fixing screws (1 piece) separately: 59000175.

Scope of delivery: 2 enclosure half shells, 4 screws for mounting cover



Filotec enclosures with membrane keypad area (1 mm) on one half-shell and moulded-on wall brackets on the other half-shell

Model	Order no.	A	B	C	b1
F 520-50 WL	97252050	55,3	20,4	50	16
F 520-80 WL	97252080	55,3	20,4	80	16
F 520-100 WL	97252100	55,3	20,4	100	16
F 520-1000 WL	97252000*	55,3	20,4	1000	16
F 524-50 WL	97253050	55,3	24,4	50	20
F 524-80 WL	97253080	55,3	24,4	80	20
F 524-100 WL	97253100	55,3	24,4	100	20
F 524-1000 WL	97253000*	55,3	24,4	1000	20

Note: C = profile length, special lengths on request. Covers: See following pages. Please order separately.

* = supplied without wall fitting holes and screw accessory pack. Please order fixing screws (1 piece) separately: 59000175.

Scope of delivery: 2 enclosure half shells, 4 screws for mounting cover



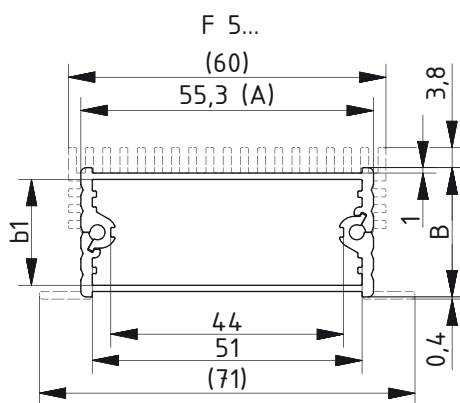
Filotec enclosures with cooling fins on one half-shell and moulded-on wall brackets on the other half-shell

Model	Order no.	A	B	C	b1
F 524-50 KWL	97453050	55,3	24,4	50	20
F 524-80 KWL	97453080	55,3	24,4	80	20
F 524-100 KWL	97453100	55,3	24,4	100	20
F 524-1000 KWL	97453000*	55,3	24,4	1000	20

Note: C = profile length, special lengths on request. Covers: See following pages. Please order separately.

* = supplied without wall fitting holes and screw accessory pack. Please order fixing screws (1 piece) separately: 59000175.

Scope of delivery: 2 enclosure half shells, 4 screws for mounting cover



Filotec 7...

Filotec enclosures with membrane keypad area (1 mm)

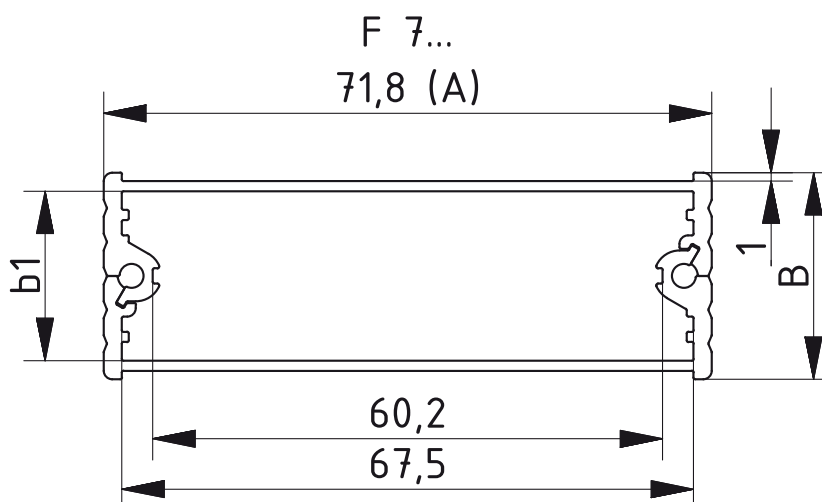
Model	Order no.	A	B	C	b1
F 716-50	97171050	71,8	16,4	50	12
F 716-80	97171080	71,8	16,4	80	12
F 716-100	97171100	71,8	16,4	100	12
F 716-1000	97171000*	71,8	16,4	1000	12
F 720-50	97172050	71,8	20,4	50	16
F 720-80	97172080	71,8	20,4	80	16
F 720-100	97172100	71,8	20,4	100	16
F 720-1000	97172000*	71,8	20,4	1000	16
F 724-50	97173050	71,8	24,4	50	20
F 724-80	97173080	71,8	24,4	80	20
F 724-100	97173100	71,8	24,4	100	20
F 724-1000	97173000*	71,8	24,4	1000	20



Scope of delivery: 2 enclosure half shells, 4 screws for mounting cover

Note: C = profile length, special lengths on request. Covers: See following pages. Please order separately.

* = supplied without screw accessory pack. Please order fixing screws (1 piece) separately: 59000175.



Z-28034.08

Filotec 10...

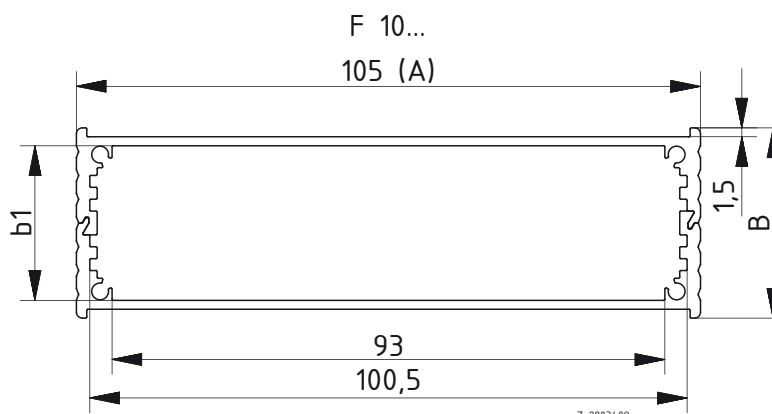


Filotec enclosures with membrane keypad area (1.5 mm)

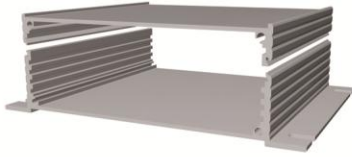
Model	Order no.	A	B	C	b1
F 1024-80	97113080	105	24	80	18
F 1024-100	97113100	105	24	100	18
F 1024-160	97113160	105	24	160	18
F 1024-220	97113220	105	24	220	18
F 1024-1000	97113000*	105	24	1000	18
F 1028-80	97114080	105	28	80	22
F 1028-100	97114100	105	28	100	22
F 1028-160	97114160	105	28	160	22
F 1028-220	97114220	105	28	220	22
F 1028-1000	97114000*	105	28	1000	22
F 1032-80	97115080	105	32	80	26
F 1032-100	97115100	105	32	100	26
F 1032-160	97115160	105	32	160	26
F 1032-220	97115220	105	32	220	26
F 1032-1000	97115000*	105	32	1000	26
F 1036-80	97116080	105	36	80	30
F 1036-100	97116100	105	36	100	30
F 1036-160	97116160	105	36	160	30
F 1036-220	97116220	105	36	220	30
F 1036-1000	97116000*	105	36	1000	30
F 1040-80	97117080	105	40	80	34
F 1040-100	97117100	105	40	100	34
F 1040-160	97117160	105	40	160	34
F 1040-220	97117220	105	40	220	34
F 1040-1000	97117000*	105	40	1000	34
F 1048-80	97118080	105	48	80	42
F 1048-100	97118100	105	48	100	42
F 1048-160	97118160	105	48	160	42
F 1048-220	97118220	105	48	220	42
F 1048-1000	97118000*	105	48	1000	42

Scope of delivery: 2 enclosure half shells, 8 screws for mounting cover

Note: C = profile length, special lengths on request. Covers: See following pages. Please order separately.
* = supplied without screw accessory pack. Please order fixing screws (1 piece) separately: 59000175.



Filotec 10...



Filotec enclosures with membrane keypad area (1.5 mm) on one half-shell and moulded-on wall brackets on the other half-shell

Model	Order no.	A	B	C	b1
F 1036-80 WL	97216080	105	36	80	30
F 1036-100 WL	97216100	105	36	100	30
F 1036-160 WL	97216160	105	36	160	30
F 1036-220 WL	97216220	105	36	220	30
F 1036-1000 WL	97216000*	105	36	1000	30
F 1040-80 WL	97217080	105	40	80	34
F 1040-100 WL	97217100	105	40	100	34
F 1040-160 WL	97217160	105	40	160	34
F 1040-220 WL	97217220	105	40	220	34
F 1040-1000 WL	97217000*	105	40	1000	34
F 1048-80 WL	97218080	105	48	80	42
F 1048-100 WL	97218100	105	48	100	42
F 1048-160 WL	97218160	105	48	160	42
F 1048-220 WL	97218220	105	48	220	42
F 1048-1000 WL	97218000*	105	48	1000	42

Note: C = profile length, special lengths on request. Covers: See following pages. Please order separately.
 * = supplied without wall fitting holes and screw accessory pack. Please order fixing screws (1 piece) separately: 59000175.

Scope of delivery: 2 enclosure half shells, 4 screws for mounting cover

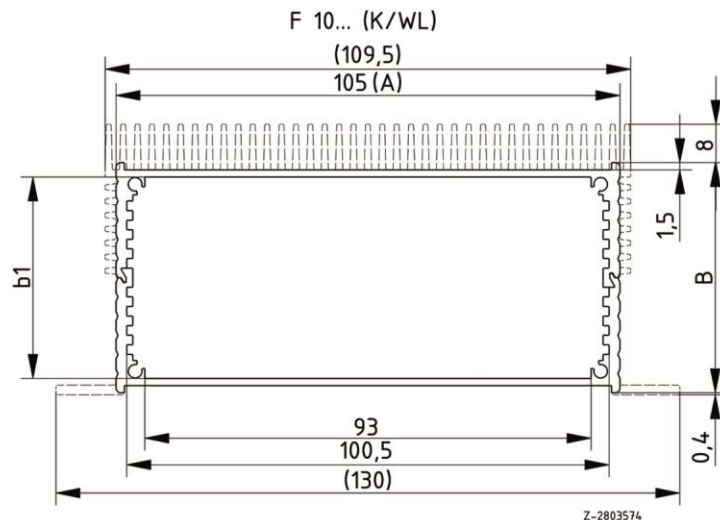


Filotec enclosures with cooling fins on one half-shell and moulded-on wall brackets on the other half-shell

Model	Order no.	A	B	C	b1
F 1048-80 KWL	97418080	105	48	80	42
F 1048-100 KWL	97418100	105	48	100	42
F 1048-160 KWL	97418160	105	48	160	42
F 1048-220 KWL	97418220	105	48	220	42
F 1048-1000 KWL	97418000*	105	48	1000	42

Note: C = profile length, special lengths on request. Covers: See following pages. Please order separately.
 * = supplied without wall fitting holes and screw accessory pack. Please order fixing screws (1 piece) separately: 59000175.

Scope of delivery: 2 enclosure half shells, 4 screws for mounting cover

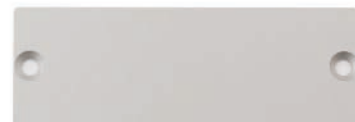


Filotec cover

Cover

Model	Order no.	Note
F 416 D	97641160	For F 416-...
F 420 D	97641200	For F 420-...
F 424 D	97641240	For F 424-...
F 516 D	97655160	For F 516-...
F 520 D	97655200	For F 520-...
F 524 D	97655240	For F 524-...
F 716 D	97671160	For F 716-...
F 720 D	97671200	For F 720-...
F 724 D	97671240	For F 724-...
F 1024 D	97610240	For F 1024-...
F 1028 D	97610280	For F 1028-...
F 1032 D	97610320	For F 1032-...
F 1036 D	97610360	For F 1036-...
F 1040 D	97610400	For F 1040-...
F 1048 D	97610480	For F 1048-...

Scope of delivery: Cover



Bopla Gehäuse Systeme GmbH | Borsigstrasse 17-25 | D-32257 Bünde
Tel. +49 (0) 5223-969-0 | Fax +49 (0) 5223-969-100
info@bopla.de | www.bopla.de



A Phoenix Mecano Company

Mat.-No. 88 11 22 02 2013/01



MILTRONIC

Kundservice 0155-777 80
www.miltronic.se

Kungshagsvägen 7 · Box 1022 · 611 29 Nyköping

A Lapp Group Company