
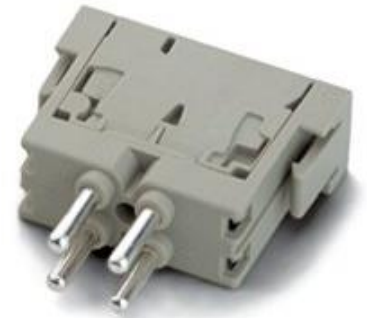


10399600	DATA SHEET	
Valid from: 24.02.2020	EPIC® MCS/MCB 4 F CAGE CLAMP 4 POLE	

Description

- The mixed assembly guarantees high flexibility. For applications in mechanical and plant engineering, for printing machines and slide-in technology.
- Assembly of individual connectors, suitable for different applications



General Characteristics

Series	MC Module
Version	Male / Female (Article 10399700)
Number of Contacts	4
Termination Methods	Cage Clamp Termination: 0.5 – 2.5 mm ² ⁽¹⁾
Temperature Range	-40°C to +100°C, short-term up to +125°C ⁽¹⁾ Up to and including 0.75 mm ² a ferrule must be used. Above 0.75 mm ² the use of a ferrule is recommended.

Artikel No.	Module	VPE
10399600	Male	10
10399700	Female	10

Mechanical Characteristics

Cycles of mechanical operation	100
--------------------------------	-----

Electrical Characteristics

Rated Voltage	400 V
Rated Current	14 A
Contact resistance	1,5-4 mOhm
Pollution Degree	3

Materials and Surfaces

Contact	Copper alloy, hard silver-plated
Module	PC
Flammability Class according to UL 94	V0


Approvals

UL-Approval, E-File-Numb	E75770
--------------------------	--------


Standard

Safety Standard	IEC 61984, UL 1977
-----------------	--------------------

Creator: MANA2/PDP Released: IVSE1/PDP	Document: DB10399600EN Version: 02	Page 1 of 3
---	---------------------------------------	-------------

10399600	DATA SHEET	
Valid from: 24.02.2020	EPIC[®] MCS/MCB 4 F CAGE CLAMP 4 POLE	

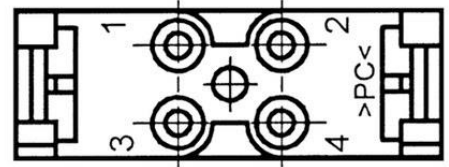
Creator: MANA2/PDP Released: IVSE1/PDP	Document: DB10399600EN Version: 02	Page 2 of 3
---	---------------------------------------	-------------

10399600	DATA SHEET	
Valid from: 24.02.2020	EPIC® MCS/MCB 4 F CAGE CLAMP 4 POLE	

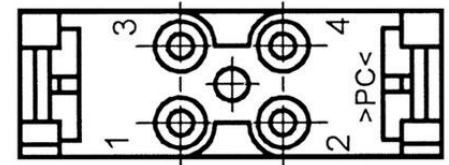
Technical Drawing



M



F



Automation



Industrial machinery and plant engineering



Wind Energy

Info

Fast connection by cage spring

Application range

Plant engineering
Printing machines
Control engineering

Remark

Photographs are not to scale and do not represent detailed images of the respective products.

Creator: MANA2/PDP Released: IVSE1/PDP	Document: DB10399600EN Version: 02	Page 3 of 3
---	---------------------------------------	-------------