
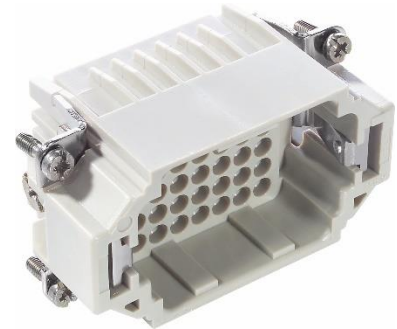


11285100	DATA SHEET	
Valid from: 27.11.2024	EPIC® H-DD 42 SCM / H-DD 42 BCM machined	

Description

- The H-DD series with machined crimp contacts - for a high number of pin in very tight spaces.
- The H-DD series with machined contacts is designed for a high number of pins in very tight spaces. This allows for smaller housing types to be chosen.



General Characteristics

Series	H-DD 42
Version	Male/Female(Article 11286100)
Number of Contacts	42 + PE
Termination Methods	Crimp termination: 0.14 - 2.5 mm ²
Temperature Range	-40°C to +100°C, short-term up to +125°C

Mechanical Characteristics

Cycle of mechanical operation	100
-------------------------------	-----

Electrical Characteristics

Rated Voltage, IEC	250 V
Rated Voltage, UL	600 V
Rated Voltage, CSA	600 V
Rated Impulse Voltage	2.5 kV
Rated Current, IEC	10 A
Rated Current, UL	8.5 A
Rated Current, CSA	8.5 A
Contact Resistance	< 3 mOhm
Degree of Soiling	2

Materials and Surfaces

Contacts	Copper alloy, hard silver/gold-plated
Insulating Body	PC
Flammability Class according to UL 94	V0


Approvals

UL-Approval, E-File-Number	E75770
VDE-Approval, VDE-REG.-Nr.	B437

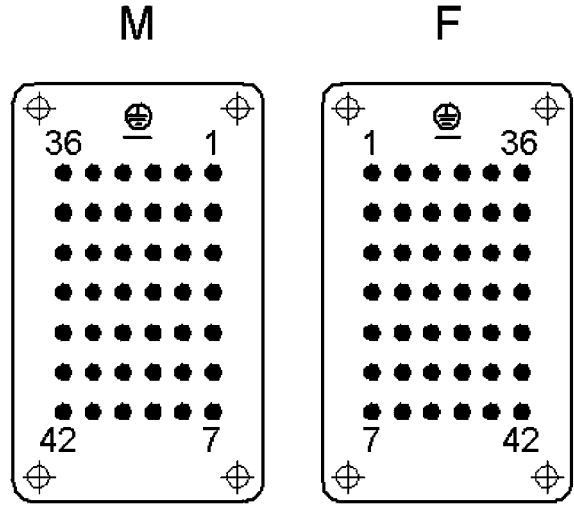
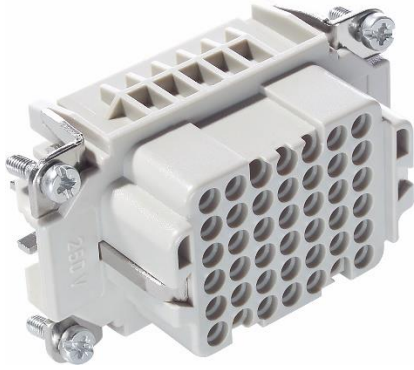
Standard

Safety Standard	IEC 61984, UL 1977, C22.2 182.3
-----------------	---------------------------------

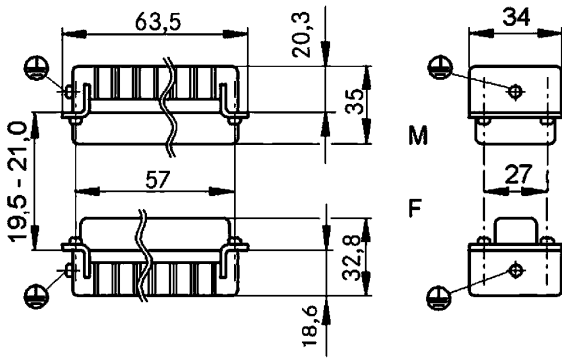
Creator: THB01/BU EPIC Released: TODV1/BU EPIC	Document: DB11285100EN Version: 04	Page 1 of 2
---	---------------------------------------	-------------

11285100	DATA SHEET	
Valid from: 27.11.2024	EPIC® H-DD 42 SCM / H-DD 42 BCM machined	

Technical Drawings



Pin diagram, cable connection side



Industrial machinery and plant engineering



Space requirement

Info

Highest packing density for compact connectors

Application range

Mechanical engineering
Light & sound technology
Plastics industry

Remark

Photographs are not to scale and do not represent detailed images of the respective products.

Creator: THB01/BU EPIC Released: TODV1/BU EPIC	Document: DB11285100EN Version: 04	Page 2 of 2
---	---------------------------------------	-------------