


52220050	<b>DATA SHEET</b>	
Valid from: 11.07.2019	<b>SKINTOP® CUBE MULTI</b>	

The innovative multi-cable entry SKINTOP® CUBE MULTI consists of SKINTOP® CUBE FRAME and a gel insert as sealing element. It provides an ideal sealing and strain relief and a maximum packing density. Due to the elastic gel membrane technology, it is possible to push the cable through and connect it directly. To ensure an optimum strain relief, the cable bundle can be fixed with help of a cable tie.



**The multi-cable entry consists of**



SKINTOP® CUBE FRAME

**Frame:**

Glass fiber reinforced polyamide (PA)

**Flat seal of frame:**

Chloroprene rubber (CR)



SKINTOP® CUBE MULTI Gel insert

**Hard component:**

Polycarbonate (PC)

**Soft component:**

Gel

**Technical features**

Protecting rate	IP 65 and IP66 acc. to EN 60529 Type 1 and Type 5 acc. to UL50E
Temperature range	-30°C up to +100°C
Material characteristics	Fire behavior HB / V-2 acc. to UL 94

**Other characteristics**

- Good chemical resistance (oil, cleaning agents...)
- UV and ozone resistant
- Permanent protection against vibration
- Frame mountable from in- and outside, fewer parts through huge, variable clamping ranges.

Article number	Article designation/size	Max. number of executions	Number of cables x cable Ø
<b>SKINTOP® CUBE MULTI gel insert</b>			
52220050	SKINTOP® CUBE MULTI V1	21	9 x 3-6 mm 9 x 6-9 mm 2 x 9-13 mm 1 x 13-16 mm
52220053	SKINTOP® CUBE MULTI V2	23	23 x 5-8 mm
<b>SKINTOP® CUBE MULTI gel insert + SKINTOP® CUBE FRAME</b>			
52220056	SKINTOP® CUBE MULTI V1 incl. frame	21	9 x 3-6 mm 9 x 6-9 mm 2 x 9-13 mm 1 x 13-16 mm
52220057	SKINTOP® CUBE MULTI V2 incl. frame	23	23 x 5-8 mm

**Approbationen**



**Norm-Referenzen**

Retention in acc. to EN 62444  
Protection class acc. to EN 60529

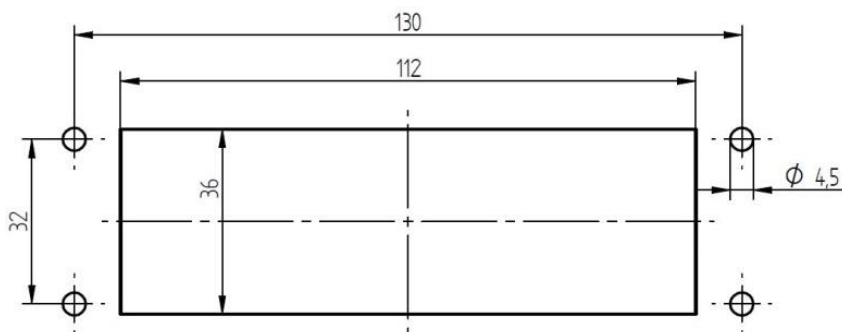
**Suitable accessories**

SKINTOP® BRUSH ADD-ON 24

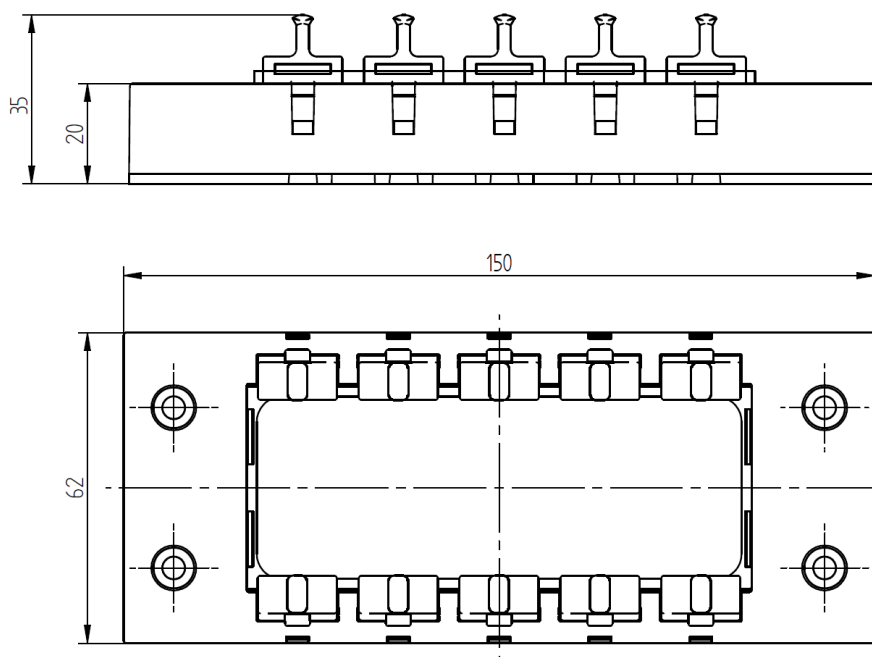
Creator: MAU1 /PDP Released: DAMU1/PDP	Document: DB52220050EN Version: 07	Page 1 of 2
---	---------------------------------------	-------------

52220050	<b>DATA SHEET</b>	
Valid from: 11.07.2019	<b>SKINTOP® CUBE MULTI</b>	

### Mounting cut-out SKINTOP® CUBE FRAME 24



### Dimensions SKINTOP® CUBE FRAME 24



For more information please see our current catalogue. Please do not hesitate to contact our laboratory if there are any questions regarding resistance against aggressive agents and special oil.

Creator: MAU1 /PDP Released: DAMU1/PDP	Document: DB52220050EN Version: 07	Page 2 of 2
---	---------------------------------------	-------------