

INSTALLATION GUIDE

Printer cab, FLEXIMARK® Software

FLEXIMARK® SOFTWARE

**Marking System
Software**
Easy to use and
freedom of choice



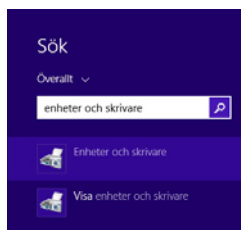
FLEXIMARK

A Lapp Group Company

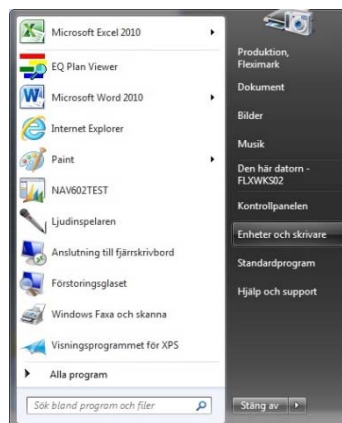
1. Install the printer.

1. Make sure that your computer has the latest updates from Microsoft. Check that by clicking the Windows key and typing update. Update and restart your computer if needed.
This is VERY important as the security is prioritized in Windows. Sometimes a not updated computer can cause problems with the printer, so be sure to ALWAYS update and restart your computer if you have problems with printing.
2. Unpack the printer and connect the USB-cable to the computer. Always use the same USB-socket on the computer, otherwise several printers will be installed. Mark the socket as a reminder.
3. Connect the power cable.
4. Power up the printer for automatic installation.
5. Should the printer not be installed automatically, insert the CD that came with the printer and follow the instructions. It is also recommended to use the latest drivers for your printer. These can be found on www.cab.de
6. When the printer is installed, enter "Devices and Printers".

Windows 8.



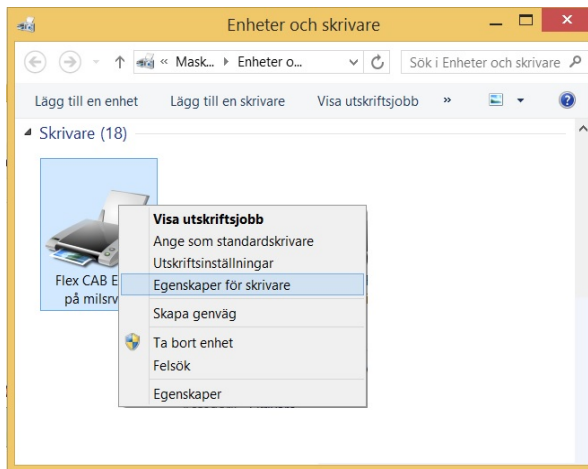
Windows 7.



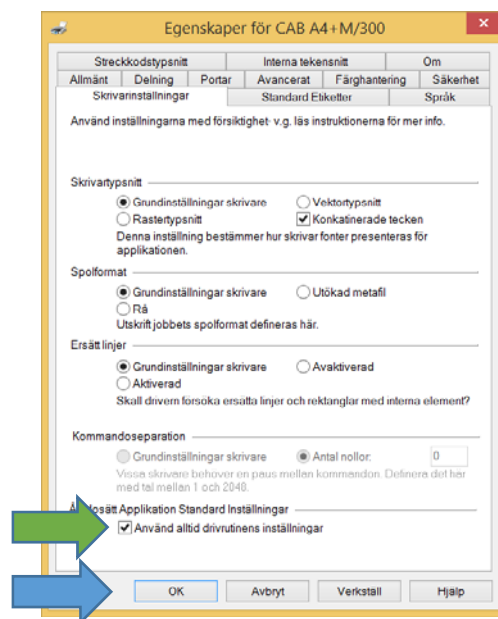
Windows XP.



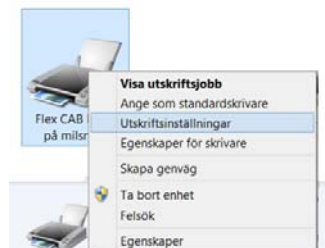
7. Right-click on your printer and select "Printer Properties"



8. In the "Printer Settings" tab, check the box "Always use the driver settings" and then click "OK"



9. Right-click on your printer and select "Printing Preferences"

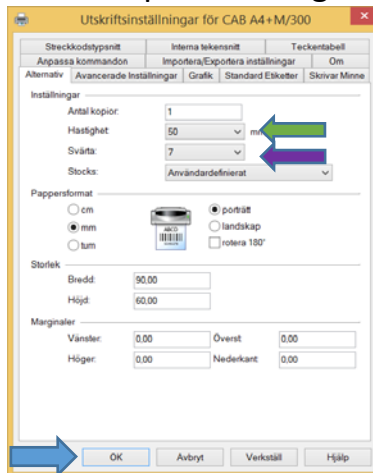


10. Set a default setting of "Speed" and "Darkness"

Speed 50mm/s and Darkness 7 which works well for most materials.

Then click "OK"

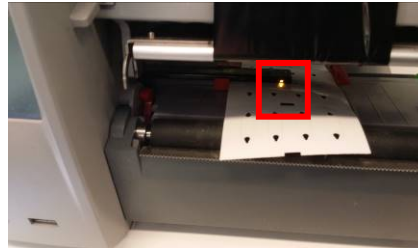
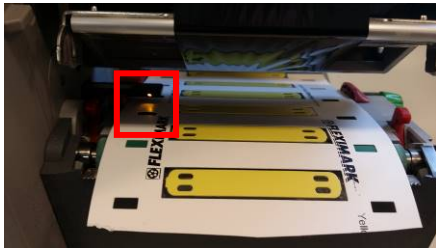
This step is done to facilitate the print settings from Fleximark Soft later.



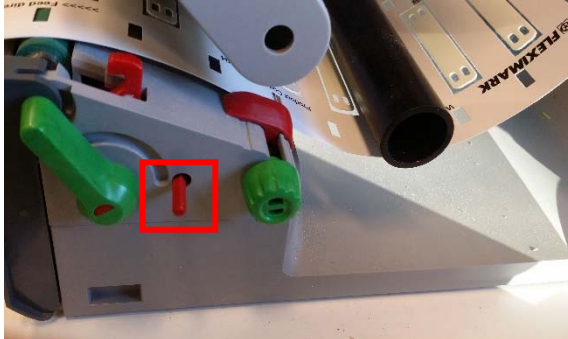
You have now completed the basic settings for the printer and can continue with the next step of the guide.

2. Set up of printer, mount materials and ribbons.

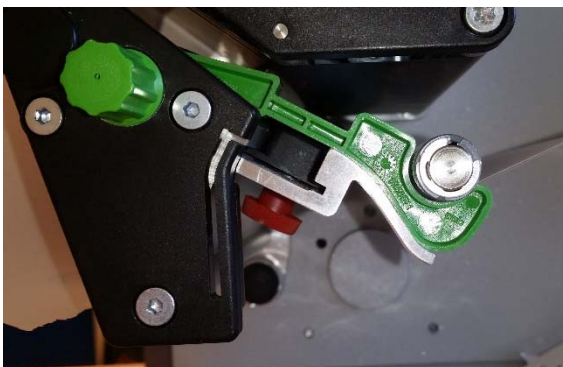
1. The printer has a sensor that reads the material. If the material has a hole that is recurrent, set the sensor over this hole. The hole may be in different place depending on the material.



2. The sensor is adjusted in the Cab EOS4 by pressing the adjuster screw which then exits the printer. Turn the screw and the sensor moves. Consult the supplied manual for more information. After adjustment, it is important to replace the adjuster screw again before closing the printhead, otherwise there is a risk that the printhead will have wrong pressure against the material.



On Cab A4+ adjustment of the sensor is done by loosening the locking screw. After this you are able to slide the sensor in or out by hand. After adjustment is done relock the screw.

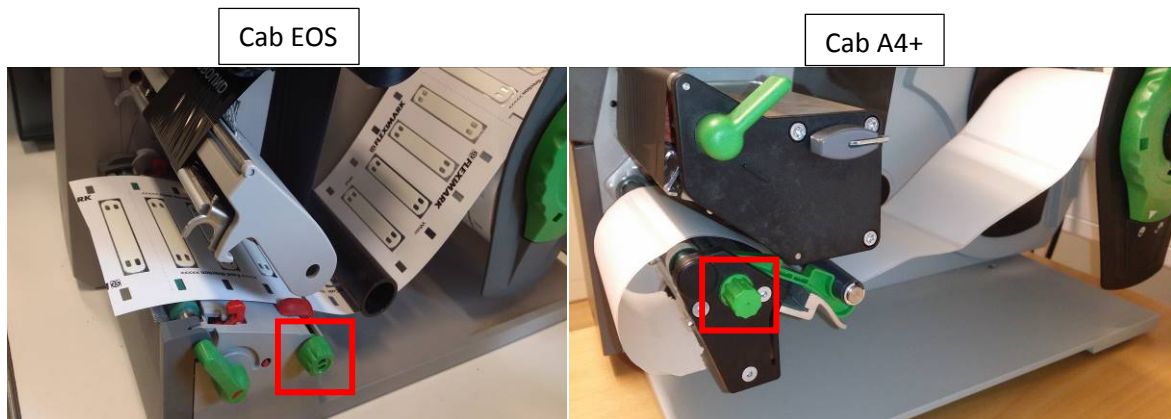


- If you use materials without holes, set the sensor directly over the material.

The sensor will read the gap between the labels.



- Mount the material as shown below, and make sure the material slides easily between the guides. Adjust the guides by turning the screw on the side.



- Different materials require different ribbons.

Below is a guide on the ribbons that are recommended for different materials.

For a complete list and the latest information regarding ribbons and materials, visit www.fleximark.com or see Fleximark product catalogues. What is shown in parenthesis indicates that the ink ribbon works but are not the best option.

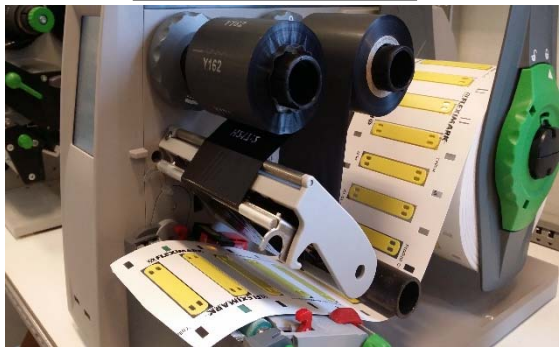
<p><u>R71</u></p> <p>Polyesterlabels TCK Flexiprint TF TA-FOAM</p>	<p><u>FTI-Y</u></p> <p>Cablelabel PUR TA-FOAM Flexiprint TF</p>	<p><u>FTI-X</u></p> <p>Shrink tube (Cablelabel PUR) (TA-FOAM)</p>
---	--	--

Depending on the ribbon, it may be installed in different directions. Cab printers can handle both.

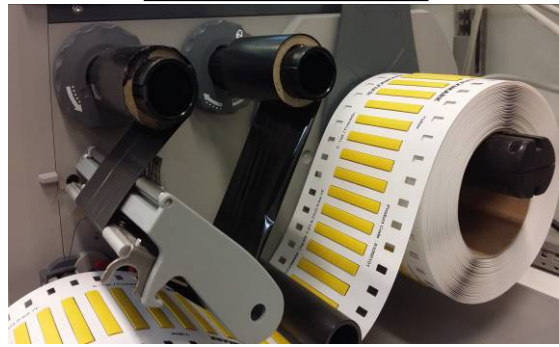
Align the ribbon and the return roller with each other, and pull the ribbon under the printhead as shown below. Mount some decimeter of ribbon and ensure that they are aligned with each other.

Check that there are no kinks in the ribbon. Consult the supplied manual for more information.

R71 och FTI-Y



FTI-X



6. Close the printhead and press the “**Feed button**” on the printer.

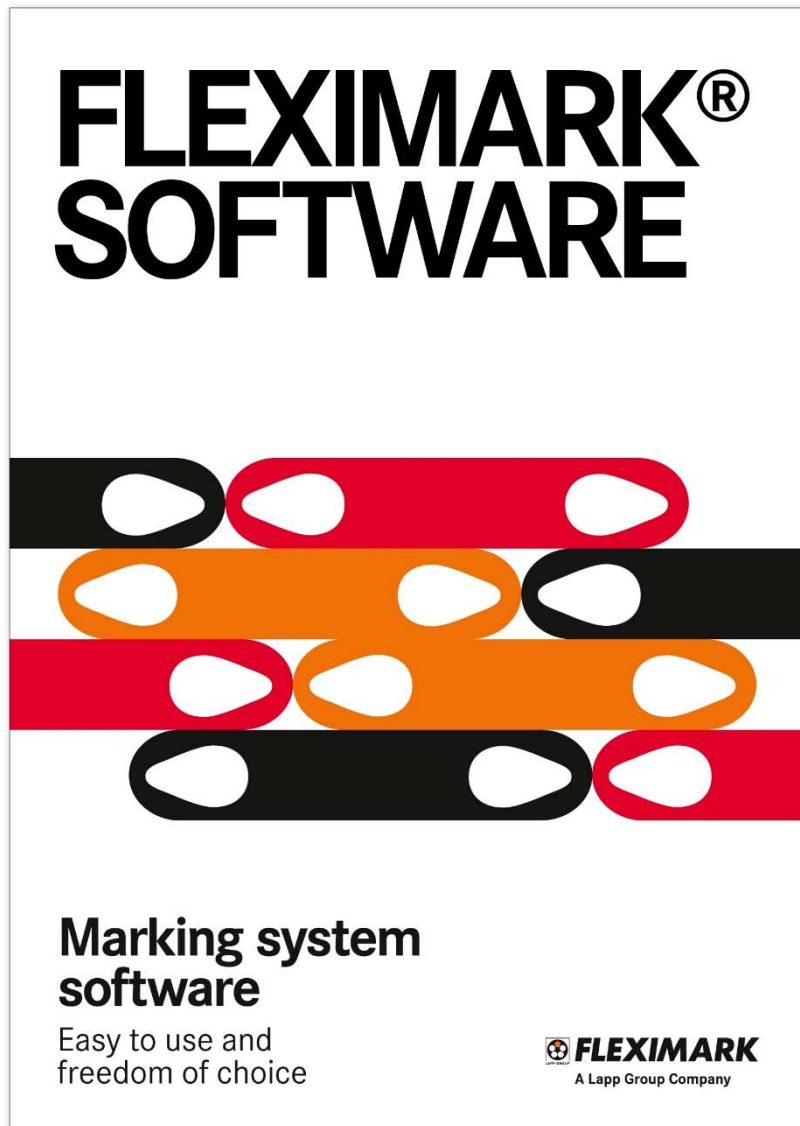


The printer is calibrated and ready for printing.

The printer is now fully set up and ready to print your label.
Go to the next step in the guide.

3. Install Fleximark Software

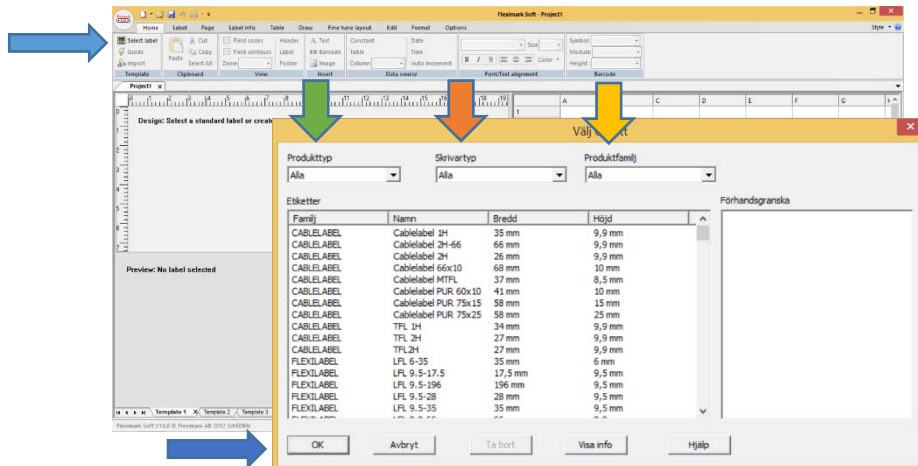
1. Insert the CD or go to www.fleximark.com to download Fleximark software.
2. Select the language you wish to install.
3. Follow the instructions in the installation.
4. Start the program and complete the registration.
You will find the serial number inside the case.
5. You are now ready to use and print the label with Fleximark Software.
Proceed to the last step of the guide.



4. Print your marking

1. Choose the label you want to print and click "OK"

You can sort by "Product type", "Printer type" and "Product family" to easy find your required label easily.



2. Select in the "Guide" from which column in the "Table window" you want the text that should be printed out, and close the "Guide".

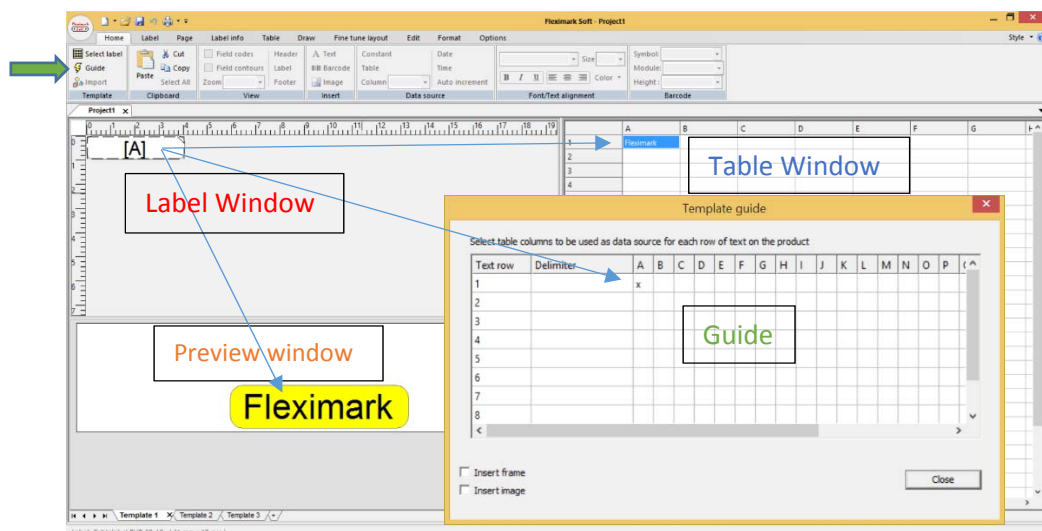
This box can be opened again by clicking the "Guide".

Normally, you write your information in column A of the "Table window". The choice of column A is shown by the [A] on the label in the "Label window".

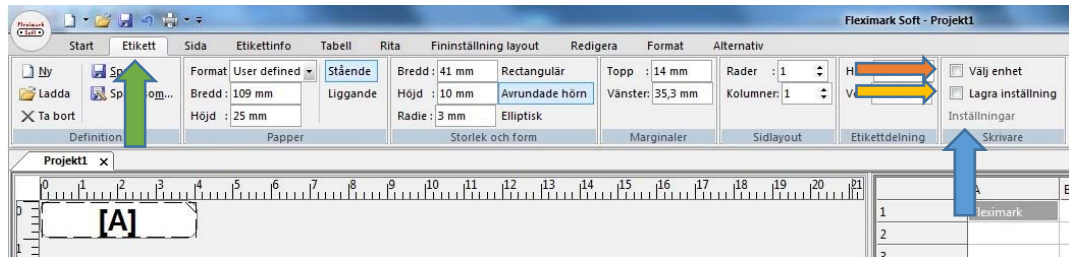
Your text appears in the "Preview window" on the bottom left.


Note that you need to click in the window you will be working in, otherwise all functions are locked (grey) including printing.

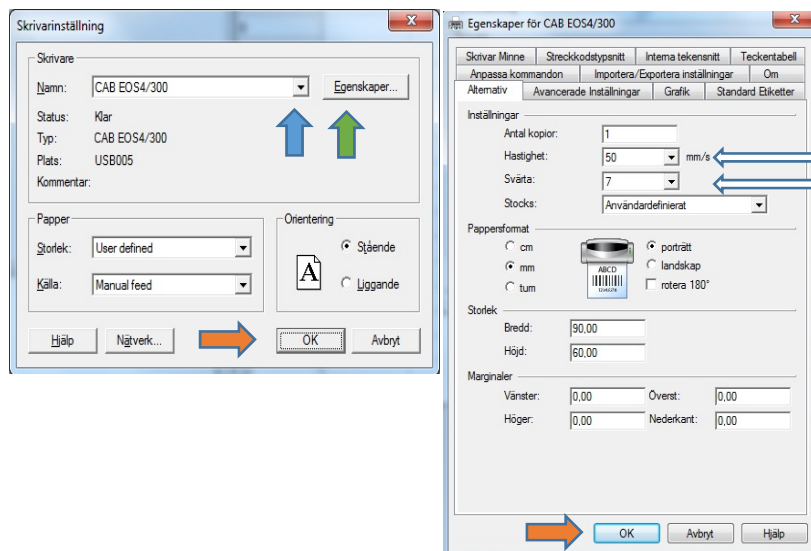
Various functions are activated depending on the active window.



- Now make printer settings for this label.
Each label can save their own printer settings, which makes it possible to quickly start printing when the label is selected.
- On the tab "Label" there are boxes "Select Device" and "Save settings". Click these boxes, and then tap "Settings".



- Select your printer in the list by pressing  and select your printer. Because you in step 1 of this guide "Install Printer" made the basic settings for the printer, you do not usually have to alter any "Properties", but in order to demonstrate this, press "Properties". When you are finished with your changes, press "OK"



Here you can change the speed of your print (50 is usually recommended)

Here you can change the darkness (heat). 7 works for most materials.

- Laser printer.
If there is a laser printer to be used for printing, there is usually a setting of paper. If the choice "labels" is available, then use this option. Otherwise select the setting for thick paper. The printer usually in this position works slower, and the best result is achieved.

Now press the "Save" button.

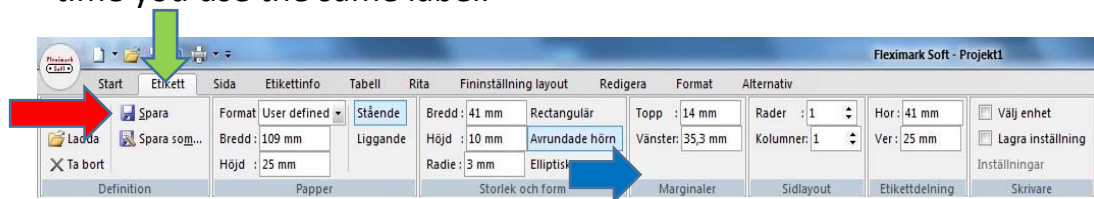
This button saves all the information under the tab "Label".

That means all settings with the label making,
and the printer settings for this label.

No printers are exactly alike, so you might need to adjust so that the text is centered on the label.

Do this by changing the value of the "Margins".

Important to remember is that you press "Save" when you changed something on your label, so that the change is stored until the next time you use the same label.



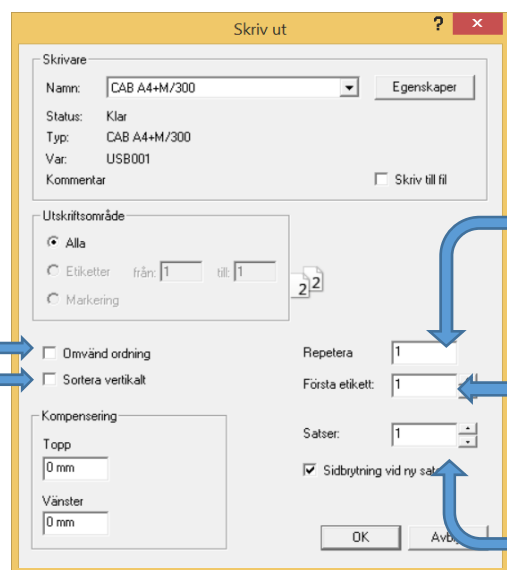
7. Now you can print your label.

Press the button "Print"



If you want the printing to start from the end of your table and go forward check this box.

When printing labels on sheets the text can be sorted ↓ vertically instead of horizontally →.



Number of each row in your table. It is also possible to have a value in column B of your table and write a big "B" in this box. The program will then repeat this value.

If the material you wish to print on, for example has 3 labels in width and you do not want to start on the first. Primarily used when printing with laser printers.

If your table contains for example 10 lines and you want them to be printed out several times in a row (multiple copies of a single job).

8. Press this button to save your complete project.

This saves all your work, including the label template and the text you typed in the table.

9. For more help and tips see the help section on the top right.

10. For questions, please contact Fleximark Support

Support@fleximark.se

+46(0)155-77764

Terms of Trade:

Our general conditions
of sale can be downloaded
from our website

www.fleximark.se



FLEXIMARK

Fleximark AB

Phone: +46 (0)155 777 90 · Fax: +46 (0)155 777 91
www.fleximark.se · info@fleximark.se

A Lapp Group Company