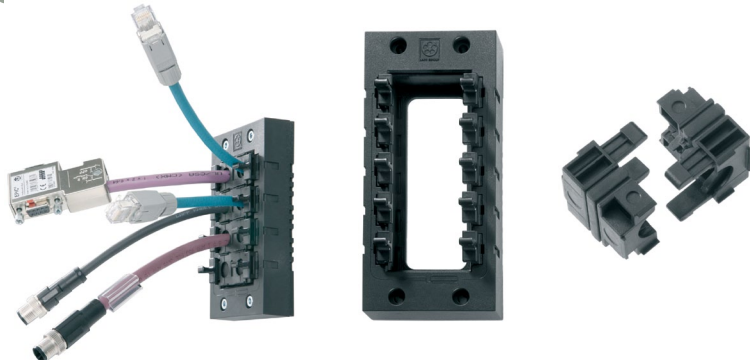


New

SKINTOP® CUBE



Info

- Innovative multi-cable bushing system with variable clamping ranges for high flexibility in assembling.
- When disassembling, the frame can remain on the housing and the plug-in module remains securely on the cable.

Benefits

- Variable range of clamping force
- Vibration-safe module fixation
- Strain relief
- Oil resistance
- Simplified servicing due to easy assembling and disassembling

Application range

- For installation of harnessed cables
- Used in areas where cables and wires need to be safely inserted into housings
- Apparatus and switch cabinet construction
- Electronic installations
- Automation technology

Product make-up

- The SKINTOP® CUBE system consists of the SKINTOP® CUBE FRAME and the clip modules SKINTOP® CUBE MODULE.
- For cut-outs for industrial connectors with standard defined boreholes.
- For cut-outs for 16-pin industrial connectors (36 x 86 mm)
- For cut-outs for 24-pin industrial connectors (36 x 112 mm)

Note

- SKINTOP® CUBE MODULE 20x20 BLIND can be used as a blind module and for clamping ranges 1 - 3 mm

Included

- SKINTOP® CUBE FRAME including mounting material

Suitable tools

- Kraftform Kompakt® 10

Technical data



Approvals

UL in pending



Material

Frame: glass fibre-reinforced polyamide
 Frame seal: CR
 Clip module: special polypropylene
 Clip module seal: LSE 2



Protection rating

IP 64
 NEMA 12



Temperature range

-20°C to +80°C

Article number	Article designation / size	Clamping range ØF (mm)	Max. number of executions	Pieces / PU
SKINTOP® CUBE Frame				
52220000	SKINTOP® CUBE FRAME 16		8	1
52220001	SKINTOP® CUBE FRAME 24		10	1
SKINTOP® CUBE clip modules				
52220004	SKINTOP® CUBE MODULE 20x20 BLIND	1 - 3		5
52220002	SKINTOP® CUBE MODULE 20x20 SMALL	4 - 6		5
52220003	SKINTOP® CUBE MODULE 20x20 LARGE	6 - 9		5
52220040	SKINTOP® CUBE MODULE 20x20 AS-I BUS	AS-I BUS		5
52220005	SKINTOP® CUBE MODULE 40x40 SMALL	9 - 12		5
52220006	SKINTOP® CUBE MODULE 40x40 LARGE	12 - 16		5
52220007	SKINTOP® CUBE MODULE 40x40 BLIND			5

Photographs are not to scale and do not represent detailed images of the respective products.

Similar products

- SKINDICHT® CABLEFIX cable bushing system

Accessories

- FLEXIMARK® LB-10 W



ÖLFLEX®
 UNITRONIC®
 ETHERLINE®
 HITRONIC®
 EPIC®
 SKINTOP®
 SILVYN®
 FLEXIMARK®
 ACCESSORIES
 APPENDIX