

EPIC[®] DATA

M12 Connector



EPIC® DATA PROFIBUS M12 Connector

Switchable integrated terminating resistor

Metalized housing

Lapp Group supplements its product portfolio for Automation with a new EPIC® DATA M12 PROFIBUS connector. It was specially designed for the connection of PROFIBUS devices with SUB-D connector to a harnessed PROFIBUS cable and offers several features:

Installation times are reduced to about 30 second compared to previous harnessing times of 3 up to 10 minutes. Reason: Complex unscrewing of the connector and

harnessing of the cable are no longer necessary. The ready made M12 PROFIBUS cable has just to be inserted and hand screwed. With this method connection errors belong to the past.

The new EPIC® DATA M12 PROFIBUS connector is available in 2 variants with a 90° cable outlet. The connector provides two M12-connectors and an integrated switchable terminating resistor. A metalized housing protects against electromagnetically interference.

Benefits M12

- Suitable for harnessed M12 PB cables
- Integrated switchable terminating resistor
- Metalized housing
- Cost-saving due to quick installation
- Dimensions 70mmx40mmx17mm
- Operating temperature 0 °C up to +60 °C



Our item designation: How it works

ED stands for EPIC® Data

PB stands for PROFIBUS

90 stands for 90° cable outlet

PG stands for Programming/Diagnostic interface

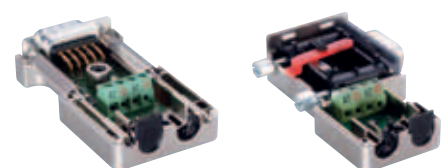
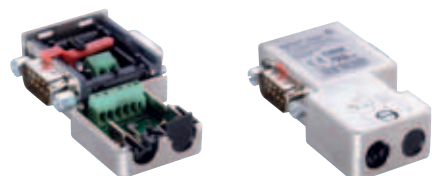
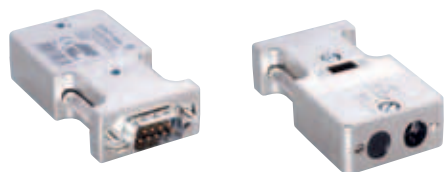
M12 stands for 5-pin connector, M 12 B-coded

Article No	Lapp designation
21700521	ED-PB-90-M12
21700520	ED-PB-90-PG-M12

Approvals



Our product range



Article No	Lapp designation	Remark
		Screw terminals, integrated terminating resistor
21700504	ED-PB-90	90° cable outlet
21700503	ED-PB-90-PG	90° cable outlet, with programming interface
21700530	ED-PB-90-LED	90° cable outlet, Status LED
21700529	ED-PB-90-PG-LED	90° cable outlet, with programming interface, Status LED
21700507	ED-PB-35	35° cable outlet
21700506	ED-PB-35-PG	35° cable outlet, with programming interface
21700505	ED-PB-AX	180° cable outlet
		Spring Type, integrated terminating resistor
21700509	ED-PB-90-ST	90° cable outlet, solid core
21700508	ED-PB-90-PG-ST	90° cable outlet, with programming interface
		(FC) Fast Connect, integrated terminating resistor
21700502	ED-PB-90-FC	90° cable outlet, FC, solid core
21700501	ED-PB-90-PG-FC	90° cable outlet, with programming interface, FC, solid core
21700528	ED-PB-90-FC-FLEX	90° cable outlet, FC, flexible + highflexible
21700527	ED-PB-90-PG-FC-FLEX	90° cable outlet, with programming interface, FC, flexible + highflexible
21700547	ED-PB-90-LED-FC	90° cable outlet, Status LED, FC, solid core
21700546	ED-PB-90-PG-LED-FC	90° cable outlet, with programming interface, Status LED, FC, solid core
21700549	ED-PB-90-LED-FC-FLEX	90° cable outlet, Status LED, FC, flexible + highflexible
21700539	ED-PB-90-PG-LED-FC-FLEX	90° cable outlet, with programming interface, Status LED, FC, flexible + highflexible
21700511	ED-PB-35-FC	35° cable outlet, FC, solid core
21700513	ED-PB-35-PG-FC	35° cable outlet, with programming interface, FC, solid core
21700514	ED-PB-35-FC-FLEX	35° cable outlet, FC, flexible + highflexible
21700515	ED-PB-35-PG-FC-FLEX	35° cable outlet, with programming interface, FC, flexible + highflexible
21700544	ED-PB-AX-FC	180° cable outlet, FC, solid core
21700545	ED-PB-AX-FC-FLEX	180° cable outlet, with programming interface, FC, solid core
		ATEX (EX Zone 2), integrated terminating resistor
21700543	ED-PB-90-ATEX	90° cable outlet, ATEX
21700542	ED-PB-90-PG-ATEX	90° cable outlet, programming interface, ATEX
		M12 connectors
21700521	ED-PB-90-M12	90° cable outlet
21700520	ED-PB-90-PG-M12	90° cable outlet, with programming interface
		REPEATER for bus extension
21700541	ED-PB-90-RP-PG	90° cable outlet, repeater, with programming interface
		CANopen
21700537	ED-CAN-90	90° cable outlet
21700536	ED-CAN-90-PG	90° cable outlet, with programming interface
21700538	ED-CAN-AX	180° cable outlet

ÖLFLEX®

UNITRONIC®

ETHERLINE®

HITRONIC®

EPIC®

SKINTOP®

SILVYN®

FLEXIMARK®



 **LAPP GROUP**

www.lappgroup.com

To contact your local Lapp Group representative
please visit www.lappgroup.com/worldwide

Terms of Trade:

Our general conditions of sale
can be downloaded from our website
www.lappgroup.com/terms