

EPIC[®] News

Edition July 2012
Page 1 of 2

U.I. Lapp GmbH · Schulze-Delitzsch-Straße 25, 70565 Stuttgart, Tel.: +49 (0)711/78 38-01, Fax: +49 (0)711/78 38-26 40, www.lappkabel.de

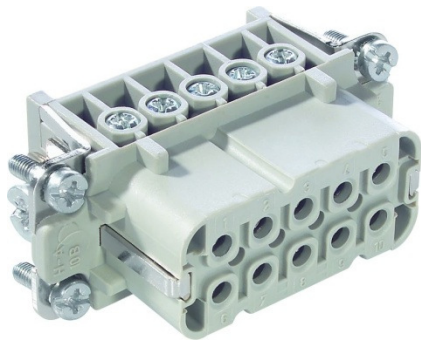
EPIC[®] H-A10, EPIC[®] H-A16 – color change

In context of a product optimization we changed the color of the plastic material. This enables us to continue to offer products from the previously used base material PBT for the same price.

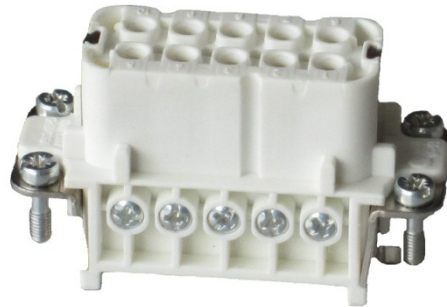
All approvals, as well as the technical and mechanical characteristics of course remain unchanged. There is no disadvantage and no restriction on previously delivered color.

So there will be no mixed color deliveries, we have our manufacturing and our warehouse already fully converted to the new version.

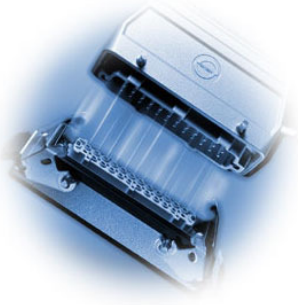
To simplify your incoming goods and quality control there are a picture documentation of the changes.



EPIC[®] H-A 10 old color stone grey



EPIC[®] H-A 10 in the new color nature



EPIC[®] News

Edition July 2012
Page 2 of 2

U.I. Lapp GmbH · Schulze-Delitzsch-Straße 25, 70565 Stuttgart, Tel.: +49 (0)711/78 38-01, Fax: +49 (0)711/78 38-26 40, www.lappkabel.de

**Affected are the following catalogue products:
Other product lines are not affected**

EPIC[®] H-A 10

10440100	EPIC [®] H-A 10 SS DR PH1
10441100	EPIC [®] H-A 10 BS DR PH1
10440000	EPIC [®] H-A 10 SS PH1
10441000	EPIC [®] H-A 10 BS PH1

EPIC[®] H-A 16, EPIC[®] H-A 32, EPIC[®] H-A 48

10530000	EPIC [®] H-A 16 SS DR PH1
10540000	EPIC [®] H-A 16 SS 17-32 DR PH1
10540100	EPIC [®] H-A 16 SS 33-48 DR PH1
10531000	EPIC [®] H-A 16 BS DR PH1
10541000	EPIC [®] H-A 16 BS 17-32 DR PH1
10541100	EPIC [®] H-A 16 BS 33-48 DR PH1
10532000	EPIC [®] H-A 16 SS PH1
10542000	EPIC [®] H-A 16 SS 17-32 PH1
10542100	EPIC [®] H-A 16 SS 33-48 PH1
10533000	EPIC [®] H-A 16 BS PH1
10543000	EPIC [®] H-A 16 BS 17-32 PH1
10543100	EPIC [®] H-A 16 BS 33-48 PH1