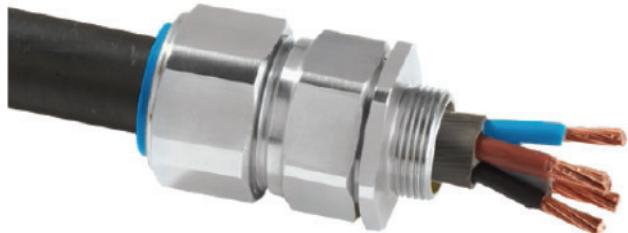


New

CW CABLE GLAND

Suitable for armoured cables, SWA and AWA



Info

- Suitable for SWA and AWA cable

Application range

- CMP CW type brass indoor and outdoor cable gland for use with all types of Single Wire Armour (SWA), Aluminium Wire Armour (AWA) cable, providing an environmental seal on the cable outer sheath.

Product features

- The CMP CW range of industrial cable glands are designed and tested to BS 6121-1:1989 meets our surpasses the requirements of EN 62444 and IEC 62444
- Produced from the Brass grade CuZn39Pb3 (CW614N) to EN12168

Norm references / Approvals

- GOST R Certificate: POCC GB. 05.H00187
- GOST K Certificate: KZ 75000361.01.01.25266
- RoK Permit For Use: 19-02-UL-1957
- Marine Approvals: LRS: 01/00171, ABS: 01-LD234401/2-PDA

Product Make-up

- CW Type
- BS 6121: Part 1: 1989, EN 62444, IEC 62444

Technical data



Note

Cable Type: SWA, AWA
 Sealing Technique: Unique CMP 'LRS'™
 Outer Seal (Load Retention Seal)
 Sealing Areas: Cable outer sheath
 Accessories: Locknut, Shourd, Entry thread sealing washer, Serrated washer, Earth tag, Adaptor/Reducer



Material

Body: Brass, Electroless Nickel Plated Brass, Stainless Steel, Aluminium
 Seal: CMP Thermoset Rubber



Protection rating

IP66



Temperature range

-60°C up to +130°C

Article number	Article designation / size	Metric	Cable Bedding Diameter (mm)	Armour Wire Diameter (mm)	Overall Cable Diameter (mm)	Approx. weight (kg)
CW CABLE GLAND						
3804300	20S/16	M 20	8.7	0.8 - 1.25	6.1 - 11.5	0.1
3804301	20S	M 20	11.7	0.8 - 1.25	9.5 - 15.9	0.1
3804302	20	M 20	14.0	0.8 - 1.25	12.5 - 20.9	0.15
3804303	25S	M 25	20.0	1.25 - 1.6	14.0 - 22.0	0.22
3804304	25	M 25	20.0	1.25 - 1.6	18.2 - 26.2	0.22
3804305	32	M 32	26.3	1.6 - 2.0	23.7 - 33.9	0.31
3804306	40	M 40	32.2	1.6 - 2.0	27.9 - 40.4	0.45
3804307	50S	M 50	38.2	2.0 - 2.5	35.2 - 46.7	0.57
3804308	50	M 50	44.1	2.0 - 2.5	40.4 - 53.1	0.75
3804309	63S	M63	50.0	2.0 - 2.5	45.6 - 59.4	1.04
3804310	63	M63	56.0	2.0 - 2.5	54.6 - 65.9	1.02
3804311	75S	M75	62.0	2.5 - 3.0	59.0 - 72.1	1.79
3804312	75	M75	68.0	2.5 - 3.0	66.7 - 78.5	2.09
3804313	90	M90	80.0	3.15 - 4.0	76.2 - 90.4	3.04
3804314	100	M100	91.0	3.15 - 4.0	86.1 - 101.5	3.13
3804315	115	M115	98.0	3.15 - 4.0	101.5 - 110.3	4.48
3804316	130	M130	115.0	3.15 - 4.0	110.2 - 123.3	5.76

Photographs are not to scale and do not represent detailed images of the respective products.

ÖLFLEX®
 UNITRONIC®
 ETHERLINE®
 HITRONIC®
 EPIC®
 SKINTOP®
 SILVYN®
 FLEXIMARK®
 ACCESSORIES
 APPENDIX