

# EPIC® Kits

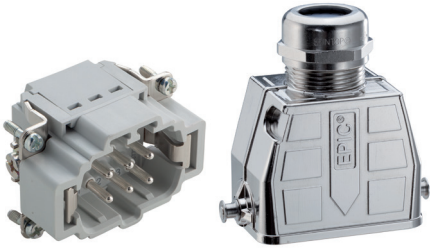
NEW

## The fastest way towards the future

- Combined connector sets for either the male or female side
- A kit contains: housing, insert, contacts, cable gland
- Available for your favourite EPIC® products in PU 1
- Simple, fast and risk-free order

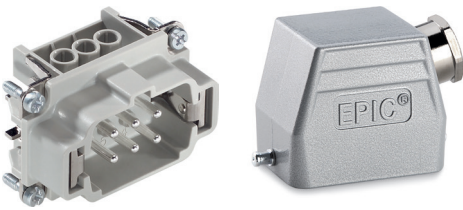


## EPIC® ULTRA Kits



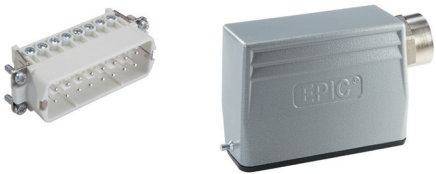
- EMC housing
- High corrosion resistance
- Tool-free Push-In termination
- 6, 10, 16 or 24-pin
- 500 V, 16 A

## EPIC® H-BE Kits



- Robust metal housing
- The industry standard
- Well-proven screw termination
- 6, 10, 16 or 24-pin
- 500 V, 16 A

## EPIC® H-A Kits



- Plastic or metal housing
- Slim design
- Well-proven screw termination
- 3, 4, 10 or 16-pin
- 400 V, 16 A

## EPIC® SIGNAL M23 Kits



- EMC housing
- For secure signal transmission
- Space-saving solder termination
- 12 or 17-pin
- 50 V, 7 A

## EPIC® POWER LS1 Kits



- EMC housing
- Small power connector
- Vibration-proof crimp termination
- 6 or 8-pin
- 630 V, 26 A