

THE WORLD OF LAPP

Innovations 2016



Legend for icons

INDUSTRIES

-  Automation
-  e-Mobility
-  Food & Beverage
-  Mechanical and Plant Engineering
-  Oil & Gas
-  Rail
-  Solar Energy
-  Wind Energy

PRODUCT CHARACTERISTICS

-  Suitable for outdoor use
-  Good chemical resistance
-  Flame-retardant
-  Wide clamping range
-  Halogen-free
-  Heat-resistant
-  Cold-resistant
-  Corrosion-resistant
-  Maximum vibration protection
-  Mechanical resistance
-  Assembly time
-  Low weight
-  Oil-resistant
-  Optimum strain relief
-  Space requirement
-  Power chain
-  Clean room
-  Robust
-  Acid-resistant
-  Reliability
-  Integrated SKINTOP® cable gland
-  Voltage
-  Connector with standard housing unit
-  Interference signals
-  Temperature-resistant
-  Torsion-resistant
-  Torsion load
-  UV-resistant
-  Waterproof
-  Variety of approval certifications

Please note: the purpose of the icons is to provide you with a quick overview and a rough indication of the product features to which the corresponding information relates. You can find details of product characteristics in the “technical data” sections on the product pages.

Content

	Company information	2
	ÖLFLEX® Power and control cables	10
	UNITRONIC® Data communication systems	18
	ETHERLINE® Data communication systems for ETHERNET technology	19
	HITRONIC® Optical transmission systems	22
	EPIC® Industrial connectors	23
	SKINTOP® Cable glands	43
	SILVYN® Protective cable conduit systems and cable carrier systems	48
	Tools and cable accessories	54

Success through values

Rock solid, high performance. Regional roots, global aspirations. Fast, reliable, high quality – and development that is always one step ahead. For products for the railway industry as well. This is Lapp.

The southwest region of Germany is considered one of the most innovative and powerful industrial sectors in the world, and for good reason. Lapp is a part of this region, helping to guide it and its success worldwide.

As a completely family run company, we know: Everything that we have achieved

since our founding in 1957 is based on the daily commitment of our skilled staff and partnerships with our customers based on trust. Each of them has made a decisive contribution to our mutual success.

Today, Lapp is one of the world's leading manufacturers of cables, leads, cable accessories and systems of the highest level of quality. We have approximately 3,300 employees worldwide. With 18 production sites on four continents, more than 39 sales companies and hundreds of dedicated consulting experts, we are always close by. And not just physically:

customer proximity cannot be measured in mere kilometres. It is based on listening, making your challenges our own and developing solutions that help to further your business model.

Candid closeness and a trusting, partnership-based cooperation are more than just words for Lapp, they are values upon which we have built our family company.

The result? Intelligent and reliable connectivity solutions precisely tailored to the needs of our globally active customers. For you as well.

Customer-oriented
Successful
Family based
Innovative. **Lapp.**

- Founded in 1957
- A leading manufacturer of cables, leads, accessories and complete system solutions for connection technology
- Approximately 3,300 employees worldwide
- 18 production facilities
- More than 39 sales companies
- Hundreds of dedicated consulting experts worldwide
- Years of experience in the rail industry



Andreas Lapp,
Matthias Lapp,
Ursula Ida Lapp,
Alexander Lapp,
Siegbert Lapp.

Lapp makes it into the TOP 100

The Stuttgart-based company has become one of Germany's elite innovators/Company to receive award from TOP 100 mentor Ranga Yogeshwar



Lapp makes it into the TOP 100 and belongs to the most innovative German SMEs. v.l. Dr. Simon Alig, Assitant of the Managing Board Technology & Innovation, mentor Ranga Yogeshwar, Guido Ege, Head of Product Management and Product Development, and Georg Stawowy, Member of the Board for Technology and Innovation. Picture: KD Busch/comamedia, www.top100-germany.com

The TOP 100 companies, a title bestowed upon the most innovative German SMEs, are to be named in the 23rd edition of this competition. The Lapp Group is among the innovative elite this year. The Stuttgart-based company had taken part in a demanding scientific selection process to achieve this status. The Group's innovation management and success in innovation were examined. The mentor of the innovation competition, Ranga Yogeshwar, will present the award for Top Innovator during the German SME Summit on 24 June in Essen.

The innovative strength behind the Lapp Group, which has been awarded the TOP 100 seal, has a name: "technology and innovation management", or TIM for short. The workshops of the same name run by the Stuttgart-based experts in connection technology are a breeding ground for new ideas. Employees from around the world working in a wide range of roles are invited to develop new solution approaches for customers three or four times per year. There are also a number of smaller TIM workshops in various departments throughout the company. "Our aim is for our employees to view innovations as part of their day-to-day work going forward so that they no longer need managers in order to come up with innovations," said Siegbert Lapp, Chairman of the Supervisory Board. The Top Innovator develops and produces complete solutions for cable technology and creates a broad portfolio of branded products, including flexible cables, power

and control cables, data and fibre optic cables, cable glands, industrial connectors and cable accessories. 3,300 or so employees around the world work for the family company, which was founded in 1959. 1,200 of these employees are based in Germany. The portfolio of standard products, not including the company's countless special-purpose solutions, now consists of over 40,000 items. This huge range is the result of many successful innovations.

Lapp is the market leader in the industry in Germany as well as being in the top tier internationally. Georg Stawowy, Member of the Board for Technology and Innovation, explains Lapp's philosophy for innovation: "Firstly, we want to tap into new markets with our innovations. Secondly, we want to be the company that is always providing the latest and best products."

Over 4,000 companies expressed an interest in participating in TOP 100 this year. 366 applied for the qualifying round. 284 reached the final round. 238 then managed the leap into the TOP 100 (a maximum of 100 companies in each of the three size categories). The companies were once again assessed by Professor Nikolaus Franke and his team at the Chair for Entrepreneurship and Innovation of Vienna University of Economics and Business. They used 100 parameters in five assessment categories - "innovation-friendly executive management", "innovation climate", "innovative processes and organisation", "inno-

vation marketing/external orientation" and "innovation success" - to perform their evaluation. The TOP 100 companies are seen as the trendsetters in their industries. This is also reflected in the assessment's figures: Among the companies, 97 are market leaders on a national scale and 32 are market leaders on a global scale. Looking at recent statistics, they generated an average of 40 percent of their turnover with market innovations and product improvements brought onto the market ahead of their competitors. Their sales growth was around 28 percentage points higher than the respective average in the industry. In total, the SMEs have filed 2,292 national and international patents over the past three years. This innovative capacity is also paying off in the workplace as the TOP 100 companies are planning to hire around 9,500 new employees over the next three years.

Ranga Yogeshwar, the mentor of TOP 100 who is also a science journalist and TV presenter, is impressed by the quality of the companies and is hoping to see others follow in their footsteps: "The way in which the TOP 100 companies come up with new ideas and develop groundbreaking products and services from these ideas is truly remarkable. I am so glad that this award shines a light on these qualities. Hopefully their success will encourage other companies to follow suit. After all, this culture of innovation will become increasingly significant to all companies in future."



Die innovativsten
Unternehmen
im Mittelstand

Lapp Group

TOP-INNOVATOR 2016

Unter der wissenschaftlichen Leitung von Professor Dr. Nikolaus Franke vom Institut für Entrepreneurship und Innovation der Wirtschaftsuniversität Wien werden jedes Jahr die innovativsten Unternehmen des deutschen Mittelstands ermittelt. Die Prüfung des Innovationsmanagements der Lapp Group brachte hervorragende Ergebnisse. Damit zählt das Unternehmen zu den Top-Innovatoren im Mittelstand.

PROF. DR. NIKOLAUS FRANKE
Institut für Entrepreneurship und Innovation
Wirtschaftsuniversität Wien

RANGA YOGESHWAR
Mentor
von TOP 100

24. Juni 2016

Eight brands, one promise: uncompromising quality – worldwide



ÖLFLEX®
Power and control cables

ÖLFLEX® has become synonymous with power and control cables. Our flexible and oil-resistant cables satisfy the highest demands and can withstand even the very toughest conditions.



UNITRONIC®
Data communication systems

Our high-quality UNITRONIC® data network cables and field bus components provide a forward-looking solution for all applications in industrial machinery and plant engineering. From transmission of simple control signals to field bus signals in complex network structures – we offer a dependable cabling and connection solution for almost every situation.



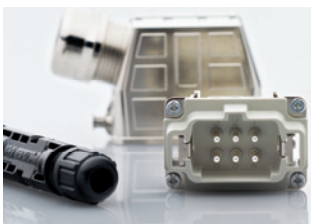
ETHERLINE®
Data communication systems
for ETHERNET technology

Our ETHERLINE® branded products open up a secure, fast and reliable path to the future of Ethernet applications. The systems are made up of durable and robust cables and connection components for passive network technology, and deliver an effective solution for almost any application, particularly in an industrial environment.



HITRONIC®
Optical transmission systems

HITRONIC® fibre optic cables make transmitting large data volumes easy: fault free, bug proof and at almost light speed. Even electromagnetic radiation does not interfere with the transmission. The HITRONIC® range includes the ideal solution for indoor or outdoor use, for demanding conditions, and even for use in power chains.



EPIC®
Industrial connectors

EPIC® industrial connectors can be found everywhere in industrial machinery and plant engineering, for measuring, control and drives. EPIC® is a flexible system of housings, inserts and contacts: all extremely robust, absolutely safe and simplicity itself to assemble.



SKINTOP®
Cable glands

Simply feed in the cable and twist. That's it. Our SKINTOP® cable glands provide secure connections in no time. The universal systems are simple but effective. They secure and centre the cable, hermetically seal it and guarantee optimum strain relief.



SILVYN®
Protective cable conduit systems
and cable carrier systems

The universal range of SILVYN® protection and guidance systems protect cables effectively against dust, moisture, mechanical, thermal and chemical influences. The versatile SILVYN® CHAIN range of energy supply chains also protects and guides cables in dynamic applications.



FLEXIMARK®
Marking systems

The requirement: permanent marking. The solution: FLEXIMARK®. These sophisticated systems mean that a clear overview inside a control cabinet is no longer just a pipe dream. From simple labels for manual marking through to electronic markings, the FLEXIMARK® range is guaranteed to be permanent.

Reliably connecting the world

We want to help you become even more productive and successful. This is why we work tirelessly on optimising our processes. We do everything to make sure we always find the best solution for you and also provide you with quick, efficient and effective support.

No matter where you are – we are always by your side. Our plants, sales companies,

partners and, above all, our competent teams of advisers ensure we offer you a comprehensive service on every continent. We do not simply distribute cable technology, we also manufacture our products ourselves – which represents another advantage for you. As a manufacturer with 18 of our own production facilities, you will benefit from our expertise in the development, design and manufacture of cables, system

products and cable accessories. Thanks to this expertise, we can guarantee that Lapp will provide you with the quality that you require and that you demand.

You can always rely on quality from Lapp – wherever you are in the world. This is also embodied by our strong brands.

8 strong brands

100 sales partners

1 innovation after another

Employees from **152** countries

More than **40,000** standard products

39 proprietary sales companies

3,300 employees

The Lapp Group worldwide

Algeria

Cablemat Sarl
16 Cité Mimouni Lotissement 18
Villa N° 14
Bordj El Kiffan, ALGER
Tel.: +213 550024331, -661, -404, -331
Fax: +213 20388220, -212, -010, -39
www.cablemat.net

Argentina

NAKASE SRL
Calle 49 No. 5764
B 1653AOX
Villa Ballester
1870 BUENOS AIRES
Tel.: +54 11 4768 4242
Fax: +54 11 4768 4242
ventas@nakase.com.ar
www.nakase.com.ar

Armenia

Integral design & engineering LLC
8 Tumanyan str.
International Business Center
0001 YEREVAN
Tel.: +374 10 520188
Fax: +374 10 519188
info@integral.am
www.integral.am

Australia

DKSH Australia Pty Ltd.
14-17 Dansu Court Hallam
3803 VICTORIA
Tel.: +61 3 95546666
Fax: +61 3 95546677
info@dksh.com.au

Austria

Lapp Austria GmbH
Bremenstraße 8
4030 LINZ
Tel.: +43 732 781272-444
Fax: +43 732 781272-34
sales@lappaustria.at
www.lappaustria.at

Belarus

PNS - Professional Network Systems
Temirjazeera str. 64b, office 308
220035 MINSK
Tel.: +375 17 2908372
Fax: +375 17 2547828
info@pns.by
www.pns.by

Belgium - Luxembourg

Lapp Benelux B.V.
Van Dijklaan 16, 5581 WG WAALRE
Postbus 74, 5580 AB WAALRE
The Netherlands
Tel.: +32 78 353060
Fax: +32 78 353065
sales.lappbenelux@lappgroup.com
www.lappbenelux.com

Brazil

Cabos Lapp Brasil Ltda.
Av. Dr. Mauro Lindenberg
Monteiro, 628
Galpao 18, Osasco
CEP 06278-010 SAO PAULO
Tel.: +55 11 21664166
Fax: +55 11 21664165
vendas@lappgroup.com.br
www.lappgroup.com.br

Cabos Lapp Brasil Ltda.

Rodovia BA535 (via Parafuso)
km 13 e 14 - Sentido Salvador
Polo Industrial e Logístico Via
Parafuso - Lote 06
CEP 42810-200 CAMAÇARI-BA
Tel.: +55 71 35002400

Bulgaria

V&V Isomatic Ltd.
40a, Pirin Str.
1680 SOFIA
Tel.: +359 29 583111
Fax: +359 29 582270
office@viv-isomatic.com
www.viv-isomatic.com

Canada

Lapp Canada Inc.
3505 Laird Road, Unit 10
L5L 5Y7 MISSISSAUGA, Ontario
Tel.: +905 8 205492
Fax: +905 8 206516
sales@lappcanada.com
www.lappcanada.com

Chile

Desimat Chile
Av. Puerto Vespuccio 9670
Parque Industrial Puerto Santiago
Pudahuel, SANTIAGO
Tel.: +56 2 25851200
Fax: +56 2 27470153
ventaschile@desimat.cl
www.desimat.cl

China

Lapp Kabel Shanghai Co., Ltd.
23A Zhaofeng Universe Building
1800 Zhongshan Road West
SHANGHAI 200235
Tel.: +86 21 64400833
Fax: +86 21 64400834
info@lappgroup.com.cn
www.lappgroup.com.cn

Lapp Cable Works Shanghai Co., Ltd.

No. 6 Standard Workshop Lingang
Industrial Area
1555 Cenglin Road, Pudong District
SHANGHAI 201306
Tel.: +86 21 20955833
Fax: +86 21 20955834

Colombia

TRANSMISIONES LTDA
Cra 69B No. 21A - 24 Bodega UE 28 - 1
Parque Industrial Montevideo
BOGOTA, D.C
Tel.: +57 1 4126898
Fax: +57 1 2929736
info@transmisiones.de
www.transmisiones.de

Congo

Dezatech sarl
Av. Kasai no 12
KINSHASA/Gombe
Tel.: +243 8211 45963
dg@dezatech.com

Costa Rica

Elvatron, SA
De Repifreno en la Uruca
400 metros Nte.
SAN JOSÉ, Costa Rica
P.O. Box 8-3770 (1000)
Tel.: +506 2242-9955
Fax: +506 2520-0697
elvatron@elvatron.com
www.elvatron.com

Croatia

TIM KABEL
Savska cesta 103
10360 ZAGREB - Sesvete
Tel.: +385 1 5555900
Fax: +385 1 5555901
zagreb@tim-kabel.hr
www.tim-kabel.hr

Cyprus

3 BRO Ltd.
3 Limnou Str.
Office 301
3820 LIMASSOL
Tel.: +357 25255353
info@3bro.gr

Czech Republic

LAPP KABEL s.r.o.
Bartosova 315, Kvitkovice
765 02 OTROKOVICE
Tel.: +420 573 501011
Fax: +420 573 394650
info@lappgroup.cz
www.lappgroup.cz

Denmark

Lapp Danmark
Korsklideeng 6
2670 GREVE
Tel.: +45 43 950000
Fax: +45 43 950009
ordre@lappgroup.dk
www.lappgroup.dk

Dominican Republic

ING. Rudy Moreno & Asociados, S.R.L.
Prolongación 27 de Febrero Esq.
Cuidad Agraria, Edif. Yarudith
SANTO DOMINGO OESTE
Tel.: +809 334 4394
Fax: +809 334 4454
www.ingrudymorenoyosoc.com

Ecuador

Elsystec S.A.
Electricidad Sistemas y Tecnología
Vasco de Contreras N35-251 y
Mañosa
CÓDIGO POSTAL 170521
Tel.: +593 2 2456510
Fax: +593 2 2456598
elsystec@elsystec.com.ec
elsystec@uii.satnet.net
www.elsystec.com.ec

Egypt

see United Arab Emirates
LAPP CABLES MIDDLE EAST FZE

El Salvador

Intek El Salvador S.A. de C.V.
Calle Gabriela Mistral No. 373
Entre Blvd. Los Héroes y 33 Av. Nte.
SAN SALVADOR, El Salvador CA.
Tel.: +503 2260-8888
Fax: +503 2260-8855
inteksv@intek-ca.com
www.intek-ca.com

Estonia

Lapp Miltronik SIA Eesti Filiaal
Kastani pst 10
44307 RAKVERE
Tel.: +372 6 518970
Fax: +372 6 518971
orders@lappmiltronik.lv
www.lappmiltronik.ee

Finland

SKS Automaatio Oy
Martinkyläntie 50
P.O. Box 122
01721 VANTAA
Tel.: +358 2 076461
Fax: +358 2 0764620
automaatio@sksf.fi
www.skssf.fi

France

Lapp France s.a.r.l.
Technopôle Forbach-Sud BP 50084
57602 FORBACH CEDEX
Tel.: +33 387 841929
Fax: +33 387 841794
lappfrance@lappgroup.com
www.lappfrance.fr

LAPP MULLER SAS

Z.A. du Grand Pont
83310 GRIMAUD
Tel.: +33 494 566500
Fax: +33 494 43487
info@mullercables.com
www.mullercables.com

Câbleries Lapp Sarl

Technopôle Forbach Sud
Rue Avogadro
57600 Oeting
Tel.: +33 387 844343
Fax: +33 387 871641
accueil@lappgroup.com

Georgia

Insta LLC
Sergo Zakariadze str. 8
0177 TBILISI
Tel.: +995 32 2202020
Fax: +995 32 2202022
sales@insta.ge
www.insta.ge

Germany

U.I. Lapp GmbH
Schulze-Delitzsch-Straße 25
70565 STUTTGART
Tel.: +49 711 783801
Fax: +49 711 78382640
info@lappkabel.de
www.lappkabel.de

Lapp Systems GmbH

Oskar-Lapp-Str. 5
70565 STUTTGART
Tel.: +49 711 783804
Fax: +49 711 78383520
info@lappkabel.de
www.lappkabel.de

Ghana

PROCESS AND PLANT AUTOMATION Ltd.
No. 3 Becca Villa, behind Cal Bank
Baatsona, Spintex Road.
P.O. Box Sr 95
ACCRA
Tel.: +233 3 02812680
ekua@automationghana.com
www.automationghana.com

Great Britain

Lapp Limited
Unit 3 Perivale Park
Horsenden Lane South
UB6 7RL GREENFORD MIDDLESEX
Tel.: +44 20 87587800
Fax: +44 20 87587880
sales@lapplimited.com
www.lappgroup.co.uk

Greece

Dimoulas Special Cables S.A.
100-102 Lenorman Str.
10444 ATHENS
Tel.: +30 21 05157610
Fax: +30 21 05157611
info@dimoulas.gr
www.dimoulas.gr

Guatemala

Intek Guatemala S.A.
4a. Ave. 10 - 31 Zona 9
GUATEMALA
Tel.: +502 2507-0500
Fax: +502 2507-0501
intekgt@intek-ca.com
www.intek-ca.com

Honduras

intek Honduras
Ofi-Bodegas Premier
100 mts. antes del Peaje a La Lima
Edificio PWC-14B
SAN PEDRO SULA
Tel.: +504 2559-4748, -50
Fax: +504 2559-4740
intekhn@intek-ca.com
www.intek-ca.com

Hong Kong

Worldtex & Co.
Unit 11, 11/F, Tins Enterprises
Centre
777 Lai Chi Kok Rd.
CHEUNG SHA WAN
KOWLOON
Tel.: +85 22 781860
Fax: +85 22 7814733
info@worldtex-co.com.hk

Hungary

Lapp Hungária Kft.
Neumann János u.1
2040 BUDAÖRS
Tel.: +36 23 501-250
Fax: +36 23 501-259
sales@lapphungaria.hu
www.lapphungaria.hu

India

Lapp India Pvt. Ltd.
Plot No.98, J & K
Jigani Industrial Area, II Phase
BANGALORE SOUTH - 560 105
Tel.: +91 8110 304800
Fax: +91 80 27825479
info@lappindia.com
www.lappindia.com

Indonesia

PT. JJ-Lapp Cable SMI
Graha INTI FAUZI, 7th Floor
Jl. Buncit Raya No. 22
JAKARTA 12510
Tel.: +62 21 27537051
Fax: +62 21 27537052
sales_jjll@jjsea.com
www.jj-lappcable.com

Iran

see United Arab Emirates
LAPP CABLES MIDDLE EAST FZE

Island

Johan Rönning Ltd.
Klettagardar 25
104 REYKJAVIK
Tel.: +354 5 200800
Fax: +354 5 200888
ronning@ronning.is
www.ronning.is

Israel

Arrow Control Cables Ltd.
7, Zavitán street
49950 NEHALIM
Tel.: +972 3 9074887
Fax: +972 3 9074889
info@arrowcables.com
www.arrowcables.com

Italy

LAPP ITALIA S.R.L.
Via Lavoratori Autobianchi 1
Building 20
20832 DESIO (MB)
Tel.: +39 0362 4871
Fax: +39 0362 487330-340
lappitalia@lappitalia.it
www.lappitalia.it

Camuna Cavi s.r.l.

Via Generale Treboldi, 128
25048 EDOLO (BS)
Tel.: +39 0364 773411
Fax: +39 0364 770120
info@camunacavi.it
www.camunacavi.it
Sales Office
Via Lavoratori Autobianchi 1
Building 20
20832 DESIO (MB)

Japan

K.Mecs Co., Ltd.
Headquarters Yusen Iwamotocho
Bldg. 3F
2-3-3 Iwamotocho, Chiyodaku
101-0032 TOKYO
Tel.: +81 3 58255333
Fax: +81 3 58258550
info@kmecs.co.jp
www.kmecs.com

Jordan

see United Arab Emirates
LAPP CABLES MIDDLE EAST FZE

Kazakhstan

Lapp Kazakhstan LLP
Abaya ave. 13, office 703
010000 ASTANA C.
Tel.: +7 7172 787365
sales@lappgroup.kz
www.lappgroup.kz

Korea

Lapp Korea LLC.
42, Jangangongdan 8-gil
Jangan-myeon, HWASEONG-SI
Gyeonggi-do, 445-941 Korea
Tel.: +82 31 1688 1099
Fax: +82 31 697 4099
www.lappkorea.com

Kuwait

see United Arab Emirates
LAPP CABLES MIDDLE EAST FZE

Kyrgyzstan

MEG Solutions LLC
Chuj avenue 265A, office 204
720071 BISHKEK
Tel.: +996 312 641946
Fax: +996 312 641983
office@meg.kg
www.meg.kg

Latvia

LAPP MILTRONIC SIA
Ulbrokas 44a
RIGA, 1021
Tel.: +371 67 501900
Fax: +371 67 501909
pasutijumi@lappmiltronic.lv
www.lappmiltronic.lv

Lebanon

see **United Arab Emirates**
LAPP CABLES MIDDLE EAST FZE

Libya

Al Jouda Co.
Al Fath - Street
Al Buraq - Building 3rd floor
BENGHAZI
Tel.: +218 91 7433363
ilsharee@yahoo.co.uk

Lithuania

LAPP MILTRONIC filialas
Aukštaičių g. 6
11341 VILNIUS
Tel.: +370 5 2780390
info@lappmiltronic.lt
www.lappmiltronic.lt

Macedonia

Siskon Doeel
Taskenska 4A
1000 SKOPIJE
Tel.: +389 2 3062423
Fax: +389 2 3061250
siskon@mt.net.mk
www.siskon.com.mk

Malaysia

JJ-LAPP Cable (M) sdn. Bhd.
16, Jalan 51A/225,
46100 PETALING JAYA SELANGOR
Tel.: +603 78 616288
Fax: +603 78 616299
sales_jjlm@jjssea.com
www.jj-lappcable.com

Malta

G & E Electronics Ltd.
Genics Bldgs.
Giov. Papaffy Str.
B'KARA BKR 4021
Tel.: +356 21 486816
Fax: +356 21 497103
info@gemalta.com
www.gemalta.com

Mexico

Lapp Mexico S de RL de CV
Avenida del bosque 1190 Int. 1
Parque Industrial del Bosque II
45619, TLAQUEPAQUE, Jalisco
Tel.: +52 33 36660250
Fax: +52 33 36660075
ventas@lappmexico.com
www.lappmexico.com

Republic of Moldova

Lapp Kabel Romania SRL
A1 Business Park
(Autostrada Bucuresti - Pitesti, Km 13.5)
Aleea Camilla nr. 11, Unitatea G2
Comuna Dragomiresti Vale
Sat Dragomiresti Deal
Judet ILFOV, 077096
Tel.: +40 213 1009-61
Fax: +40 213 1009-59
office@lappkabel.ro
www.lappkabel.ro

Mongolia

EUROCABLE G Co., Ltd.
Barun Selbe 5/26
1st Khoroo, Chingeltei District
15160 ULAANBAATAR
Tel.: +976 70 117171
info@cable.mn
www.cable.mn

Morocco

Fiabel
16 Rue des Dahlias (Beausite)
Boulevard La Grande Ceinture
Ain Sebâa, CASABLANCA
Tel.: +212 522 403301, 522 404616
Fax: +212 522 403303
www.fiabel.ma

Netherlands

Lapp Benelux B.V.
Van Dijklaan 16,
5581 WG WAALRE
Postbus 74, 5580 AB WAALRE
Tel.: +31 40 2285000
Fax: +31 40 2285010
sales.lappbenelux@lappgroup.com
www.lappbenelux.com

New Zealand

Engineering Computer Services Ltd.
Cnr Te-Rapa & Ruffell Rd
P.O. Box 20204
HAMILTON, 3288
Tel.: +64 7 8492211
Fax: +64 7 8492220
garry@lappgroup.co.nz
www.lappgroup.co.nz

Nicaragua

Electronica Tecnica SA.
De la Óptica Nicaraguense
3C al este, 1/2C al Sur
Casa #38 Residencial Bolonia
MANAGUA
Tel.: +505 2254-4913
info@nl.elvatron.com
nicaragua.elvatron.com

Norway

Miltronik AS
Eikveien 11
3036 DRAMMEN
Tel.: +47 32 261300
Fax: +47 32 261398
info@miltronik.no
www.miltronik.no

Oman

see **United Arab Emirates**
LAPP CABLES MIDDLE EAST FZE

Pakistan

see **United Arab Emirates**
LAPP CABLES MIDDLE EAST FZE

Panama

Lapp Latinamerica Support Corporation
Edif. Global Bank Calle 50, piso 38
Int. 3801-A, PANAMA
Tel.: +507 3938-565
soporte.latam@lappgroup.com

Peru

DIPROSOL PERU SAC
Av. Velasco Astete 2371
Surco LIMA 33
Tel.: +51 1 2752765
Fax: +51 1 2752776
ventas@diprosol.com.pe
www.diprosol.com.pe

Philippines

JJ-LAPP Cable (P) Inc
Unit 704, Philplans Corporate Center
1012 Triangle Drive
Bonifacio Global City
1634 TAGUIG CITY, MANILA
Tel.: +632 786 7566
Fax: +632 786 7544
sales_jjlp@jjssea.com
www.jj-lappcable.com

Poland

Lapp Kabel Sp. z o.o.
Ulica: Profesjonalna 1
Biskupice Podgórne
55-040 KOBIERZYCE
Tel.: +48 71 3306300
Fax: +48 71 3306306
info@lappolska.pl
www.lappolska.pl

Portugal

Policabos S.A.
Av. Pedro Álvares Cabral
Lugar da Capa Rota
2710-144 SINTRA
Tel.: +351 21 9178640
Fax: +351 21 9178649
policabos@policabos.pt
www.policabos.pt

Qatar

see **United Arab Emirates**
LAPP CABLES MIDDLE EAST FZE

Romania

Lapp Kabel Romania SRL
A1 Business Park
(Autostrada Bucuresti - Pitesti, Km 13.5)
Aleea Camilla nr. 11, Unitatea G2
Comuna Dragomiresti Vale
Sat Dragomiresti Deal
Judet ILFOV, 077096
Tel.: +40 213 1009-61
Fax: +40 213 1009-59
office@lappkabel.ro
www.lappkabel.ro

Russia

Lapp Russia OOO
Mira st., 7, Krutye Kluchi
443028 SAMARA
Tel.: +7 846 2310333
Fax: +7 846 2310028
info@lappgroup.ru
www.lappgroup.ru

Saudi Arabia

see **United Arab Emirates**
LAPP CABLES MIDDLE EAST FZE

Serbia

VESIMPEX d.o.o.
Patrijarha Dimitrija 24 (DMB)
11090 BEOGRAD-RAKOVICA
Tel.: +381 11 4049-070, -071, -072, -073
Magacin/warehouse: +381 11 4049-075
Fax: +381 11 4049-077
Mob: +381 63 693-373
info@vesimpex.rs
www.vesimpex.rs

Singapore

Lapp Logistics Pte. Ltd.
No.9 Tuas South St. 3
SINGAPORE 638017
Tel.: +65 6558-7176
Fax: +65 6558-7081
lappsea.lappgroup.com
JJ-LAPP Cable (S) Pte. Ltd.
No.9 Tuas South St 3
SINGAPORE 638017
Tel.: +65 6508-6200
Fax: +65 6863-1271
sales_jjls@jjssea.com
www.jj-lappcable.com

Slovakia

LAPP SLOVENSKO, s.r.o.
Piaristicka 2
949 24 NITRA
Tel.: +421 376 578095
Fax: +421 376 578095
info@lappgroup.sk
www.lappgroup.sk

Slovenia

Lapp, d. o. o.
Limbuška cesta 2
2341 LIMBUŠ
Tel.: +386 2 4213550
Fax: +386 2 4213571
info@lappslovenia.com
www.lappslovenia.com

South Africa

Lapp Group Southern Africa
51 Brunton Circle
Founders View South
Modderfontein
1645 GAUTENG
Tel.: +27 11 2013200
Fax: +27 11 6095850
info@lappkabel.co.za
www.lappkabel.co.za

Spain

Lapp Group España
Avda. de les Garrigues, 34 - 36
Parque Empresarial Mas Blau II
08820 EL PRAT DE LLOBREGAT
(Barcelona)
Tel.: +34 902 108 669
Fax: +34 934 796 272
info@lappgroup.es
www.lappgroup.es

Sweden

Miltronik AB
Kungshagsvägen 7
Box 1022
611 29 NYKÖPING
Tel.: +46 155 77780
Fax: +46 155 77701
info@miltronik.se
www.miltronik.se

Sales office Denmark

Korskildeeng 6
2670 GREVE
Tel.: +45 43 950000
Fax: +45 43 950009
info@miltronik.dk
www.miltronik.dk

Switzerland

Volland AG
Ifangstrasse 103
8153 RÜMLANG
Tel.: +41 44 8179797
Fax: +41 44 8179700
info@volland.ch
www.volland.ch

EPIC®

Bachofen AG
Ackerstraße 42
8610 USTER
Tel.: +41 44 9441111
Fax: +41 44 9441233
info@bachofen.ch
www.bachofen.ch

Syria

see **United Arab Emirates**
LAPP CABLES MIDDLE EAST FZE

Taiwan

DKSH Taiwan Ltd.
10th Floor, No. 22, Lane 407
Tiding Blvd., Sec. 2
Neihu Technology Park
TAIPEI CITY 114-93
Tel.: +886 2 87527597
Fax: +886 2 87518688
edmund.foo@dksh.com

Thailand

JJ-LAPP Cable (T) Ltd.
23/110-117 Sorachai Building
25-29th FL
Soi Sukhumvit 63 (Ekamai),
Sukhumvit Road, Klongton Nua,
Wattana, BANGKOK 10110
Tel.: +66 27 878288
Fax: +66 27 878299
sales_jjlt@jjssea.com
www.jj-lappcable.com

Tunisia

ELECSA TN, Groupe TTI
Zone industrielle
8030 GROMBALIA
Tel.: +216 72 255954
Fax: +216 72 255980
commercial@elecsa-tn.com
www.elecsa-tn.com

Turkey

LAPP KABLO San. ve Tic.Ltd.Şti.
Atatürk Mah. Şeref Sok. No: 55/1
34758 ATAŞEHİR-İSTANBUL
Tel.: +90 216 4565699
Fax: +90 216 4565687-89
info@lapp.com.tr
www.lapp.com.tr

Ukraine

Lapp Ukraine LLC
201 - 203, Kharkivske shose
02121 KIEV
Tel.: +38 044 495-6000
Fax: +38 044 490-7630
sales@lappukraine.com
www.lappukraine.com

United Arab Emirates

LAPP CABLES MIDDLE EAST FZE
Wing A-502, P.O. Box 341223
Dubai Silicon Oasis
DUBAI
Tel.: +971 4 3712905
Fax: +971 4 3712918
lappme@lappgroup.com
www.lappgroup.com

Uruguay

Reprinter LTDA.
Avda. Italia 6481
MONTEVIDEO
Tel.: +598 2600-7343
Fax: +598 2600-8658
lapp@reprinter.com.uy
www.reprinter.com.uy

USA

Lapp USA, Inc.
29 Hanover Road
FLORHAM PARK, NJ 07932
Tel.: +1 973 6609700
Fax: +1 973 6609330
sales@lappusa.com
www.lappusa.com

Lapp Tannehill, Inc.

8675 Eagle Creek Parkway Suite 900
SAVAGE, MN 55378
Tel.: +1 952 8816700
Fax: +1 952 8810743
sales@lapptannehill.com
www.lapptannehill.com

Uzbekistan

Elektro Potential LLC
Y. Bodomzor str. 2 B, office 311
Yunusabad area
100084 TASHKENT
Tel.: +998 71 1501220
Fax: +998 71 1501220
mz1958@yandex.ru

Venezuela

Somerinca, CA
Qta Corazón de Jesus
4ta Transversal de Montecristo c/
calle el Carmen, de los Dos Caminos
1070 CARACAS
Tel.: +212 235 1081/1696/2748,
237 3003
Fax: +212 239 9341
klocmoeller@cantv.net
www.somerinca.com

Vietnam

JJ-Lapp Cable Vietnam Co., Ltd
12th floor, Unit 1206, Sailing Tower
111A Pasteur Street, District 1
HO CHI MINH CITY
Tel.: +84 8 62887668
Fax: +84 8 38236776
sales_jjlv@jjssea.com
www.jj-lappcable.com

Yemen

see **United Arab Emirates**
LAPP CABLES MIDDLE EAST FZE



ÖLFLEX® CHAIN 90 P

Highly flexible single core power cable with abrasion and oil resistant PUR sheath - certified for North America



Info

- Extended Line for heavy duty in power chain applications
- Allrounder for indoor and outdoor use
- Improved characteristics in the event of a fire

Benefits

- Allows much faster speed and accelerations which increases the economic efficiency of the machines
- Multi-standard certification reduces part varieties and saves costs
- Increased durability under harsh conditions thanks to robust PUR outer sheath
- Resistant to contact with many mineral oil-based lubricants, diluted acids, aqueous alkaline solutions and other chemical media
- Wide temperature range for applications in harsh climatic environments
- Longer cable installation lengths thanks to low mutual capacitance cable design

Application range

- In power chains or moving machine parts
- For internal wiring of electric and electronic equipment in switch cabinets
- This cable can substitute multi-core power cables where space requirements or minimum bending radii cause problems
- Specially designed for power circuits of servomotors driven by frequency converters
- Test systems in the automotive industry, vehicles and stationary fuel cell systems
- For indoor and outdoor use

Product features

- Designed for 10 million alternating bending cycles and horizontal travel distances up to 100 meter
- Flammability:
 - Halogen-free acc. to VDE 0472-815
 - Flame retardant acc. to IEC 60332-1-2 or UL/cUL VW-1, FT 1
- Good weather, UV and oil resistance
- Abrasion and notch-resistant
- Flexible at low temperatures
- Low-capacitance design

Norm references / Approvals

- USA: UL AWM Style 11624, VW-1
- Canada: cUL AWM I/II A, FT 1
- UL File No. E63634
- For use in power chains: Please comply with assembly guideline Appendix T3

Product Make-up

- Extra-fine wire strand made of bare copper wires (class 6)
- Core insulation: TPE compound
- PUR outer sheath, black (RAL 9005)

Technical data

Classification
ETIM 5.0 Class-ID: EC000057
ETIM 5.0 Class-Description:
Low voltage power cable

Core identification code
Black or green-yellow, other colours available on request

Conductor stranding
Extra-fine wire according to VDE 0295, class 6/IEC 60228 class 6

Torsion movement in WTG
TW-0 & TW-2, refer to Appendix T0

Minimum bending radius
Flexing: 7.5 x outer diameter
Fixed installation: 3 x outer diameter

Nominal voltage
IEC: U_c/U 600/1000 V
UL & CSA: 1000 V

Test voltage
4000 V

Protective conductor
G = with GN-YE protective conductor
X = without protective conductor

Alternating bending cycles
10 mio. cycles

Temperature range
Flexing: -35°C to +80°C
Fixed installation: -50°C to +80°C

Article number	Conductor cross-section (mm ²)	Outer diameter (mm)	Core colour	Copper index (kg/km)	Weight (kg/km)
ÖLFLEX® CHAIN 90 P					
1026513	1.5	6.3	green-yellow	14.4	48
1026514	1.5	6.3	black	14.4	48
1026515	2.5	6.9	green-yellow	24	63
1026516	2.5	6.9	black	24	63
1026517	4	7.2	green-yellow	38.4	77
1026518	4	7.2	black	38.4	77
1026519	6	7.7	green-yellow	57.6	95
1026520	6	7.7	black	57.6	95
1026521	10	9.1	green-yellow	96	145
1026522	10	9.1	black	96	145
1026523	16	10.6	green-yellow	153.6	205
1026524	16	10.6	black	153.6	205
1026525	25	12.3	green-yellow	240	290
1026526	25	12.3	black	240	290
1026527	35	13.3	green-yellow	336	413
1026528	35	13.3	black	336	413

Article number	Conductor cross-section (mm ²)	Outer diameter (mm)	Core colour	Copper index (kg/km)	Weight (kg/km)
1026529	50	15.9	green-yellow	480	535
1026530	50	15.9	black	480	535
1026531	70	18	green-yellow	672	776
1026532	70	18	black	672	776
1026533	95	19.9	green-yellow	912	998
1026534	95	19.9	black	912	998
1026535	120	22.5	green-yellow	1152	1249
1026536	120	22.5	black	1152	1249
1026537	150	24.6	green-yellow	1440	1486
1026538	150	24.6	black	1440	1486
1026539	185	27.2	green-yellow	1776	1788
1026540	185	27.2	black	1776	1788
1026541	240	32.1	green-yellow	2304	2381
1026542	240	32.1	black	2304	2381
1026543	300	34	green-yellow	2880	2964
1026544	300	34	black	2880	2964

Unless specified otherwise, the shown product values are nominal values at room temperature. Detailed values (e.g. tolerances) are available upon request.

Copper price basis: EUR 150/100 kg. Refer to catalogue appendix T17 for the definition and calculation of copper-related surcharges.

Please find our standard lengths at: www.lappkabel.de/en/cable-standardlengths

Packaging size: coil ≤ 30 kg or ≤ 250 m, otherwise drum

Please specify the preferred type of packaging (e.g. 1 x 500 m drum or 5 x 100 m coils).

Photographs are not to scale and do not represent detailed images of the respective products.

Accessories

- SILVYN® CHAIN cable protection and guiding systems



ÖLFLEX® CHAIN 90 CP

Highly flexible, screened single core power cable with abrasion and oil resistant PUR sheath - certified for North America

Info

- Extended Line for heavy duty in power chain applications
- Allrounder for indoor and outdoor use
- Improved characteristics in the event of a fire



Benefits

- Allows much faster speed and accelerations which increases the economic efficiency of the machines
- Increased durability under harsh conditions thanks to robust PUR outer sheath
- Resistant to contact with many mineral oil-based lubricants, diluted acids, aqueous alkaline solutions and other chemical media
- Wide temperature range for applications in harsh climatic environments
- Longer cable installation lengths thanks to low mutual capacitance cable design
- Copper screening complies with EMC requirements and protects against electromagnetic interference

Application range

- In power chains or moving machine parts
- For internal wiring of electric and electronic equipment in switch cabinets
- Specially designed for power circuits of servomotors driven by frequency converters
- This cable can substitute screened multi-core motor cables where space requirements or minimum bending radii cause problems
- Test systems in the automotive industry, vehicles and stationary fuel cell systems
- For indoor and outdoor use

Product features

- Designed for 10 million alternating bending cycles and horizontal travel distances up to 100 meter
- Flammability:
 - Halogen-free acc. to VDE 0472-815
 - Flame retardant acc. to IEC 60332-1-2 or UL/cUL VW-1, FT1
- Good weather, UV and oil resistance
- Flexible at low temperatures
- Low-capacitance design
- EMC-compliant

Norm references / Approvals

- USA: UL AWM Style 11624, VW-1
- Canada: cUL AWM I/II A, FT1
- UL File No. E63634
- For use in power chains: Please comply with assembly guideline Appendix T3

Product Make-up

- Extra-fine wire strand made of bare copper wires (class 6)
- Core insulation: TPE compound
- Non-woven wrapping
- Tinned-copper braiding
- PUR outer sheath, black (RAL 9005)

Technical data

Classification
ETIM 5.0 Class-ID: EC000057
ETIM 5.0 Class-Description: Low voltage power cable

Core identification code
Black, other colours are available upon request

Conductor stranding
Extra-fine wire according to VDE 0295, class 6/IEC 60228 class 6

Minimum bending radius
For flexible use: 7.5 x outer diameter
Fixed installation: 3 x outer diameter

Nominal voltage
IEC: U₀/U 600/1000 V
UL & CSA: 1000 V

Test voltage
4000 V

Alternating bending cycles
10 mio. cycles

Temperature range
Flexing: -35°C to +80°C
Fixed installation: -50°C to +80°C

Article number	Conductor cross-section (mm ²)	Outer diameter (mm)	Copper index (kg/km)	Weight (kg/km)
ÖLFLEX® CHAIN 90 CP				
1026547	1.5	7	23.8	60
1026548	2.5	7.6	41	90
1026549	4	7.9	58.8	100
1026550	6	8.4	81.3	120
1026551	10	9.8	123	180
1026553	16	11.3	187.7	240
1026555	25	13	280.6	340
1026557	35	14.2	398.9	480

Article number	Conductor cross-section (mm ²)	Outer diameter (mm)	Copper index (kg/km)	Weight (kg/km)
1026559	50	16.8	551.7	610
1026561	70	19.1	773.2	880
1026563	95	21.6	1036.6	1160
1026565	120	23.6	1277.7	1380
1026567	150	25.9	1618	1670
1026569	185	28.5	1957.3	1980
1026571	240	33.4	2511.7	2600
1026573	300	35.3	3117	3210

Unless specified otherwise, the shown product values are nominal values at room temperature. Detailed values (e.g. tolerances) are available upon request.
Copper price basis: EUR 150/100 kg. Refer to catalogue appendix T17 for the definition and calculation of copper-related surcharges.
Please find our standard lengths at: www.lappkabel.de/en/cable-standardlengths
Packaging size: coil ≤ 30 kg or ≤ 250 m, otherwise drum
Please specify the preferred type of packaging (e.g. 1 x 500 m drum or 5 x 100 m coils).
Photographs are not to scale and do not represent detailed images of the respective products.

Accessories

- SKINTOP® BRUSH ADD-ON refer to main catalogue 2016/17
- SKINTOP® MS-M BRUSH refer to main catalogue 2016/17
- SKINTOP® MS-HF-M BRUSH refer to page 45
- SILVYN® CHAIN cable protection and guiding systems



H1Z2Z2-K

Cross-linked solar cables - type H1Z2Z2-K certified according to EN 50618



Info

- H1Z2Z2-K (code designation according to EN 50618)
- Substitutes previous ÖLFLEX® SOLAR XLR-R

Benefits

- Reduction of flame propagation and of toxic combustion gases in the event of fire
- Robust against mechanical impacts
- For outdoor applications

Application range

- For use in photovoltaic-systems with rated voltage 1500 V DC
- For the cabling between the solar modules and as extension cable between the module strings and the DC/AC inverter
- Gable and flat roof photovoltaic systems
- Photovoltaic plants and solar parks
- Flexible or building-integrated PV systems

Product features

- Flame retardant acc. to IEC 60332-1-2
- Weather/UV-resistant acc. to EN 50618, appendix E
- Ozone-resistant according to EN 50396
- Good notch and abrasion resistance
- Halogen-free according to IEC 60754-1 (amount of halogen acid gas)
Corrosiveness of combustion gases according to IEC 60754-2 (degree of acidity)

Norm references / Approvals

- H1Z2Z2-K (code designation according to EN 50618)
- Items with other cross-sections on request

Product Make-up

- Fine-wire, tinned-copper conductor
- Core insulation made of cross-linked copolymer
- Colour of core insulation: white
- Outer sheath made of cross-linked copolymer
- Outer sheath colour: black, red or blue

Technical data

Classification
ETIM 5.0 Class-ID: EC001578
ETIM 5.0 Class-Description:
Flexible cable

Conductor stranding
Fine wire according to VDE 0295, class 5/IEC 60228 class 5

Minimum bending radius
Fixed installation: 4 x outer diameter

Nominal voltage
AC U_0/U : 1,0/1,0 kV
DC U_0/U : 1,5/1,5 kV
Max. permissible operating voltage:
DC 1,8 kV

Test voltage
AC 6500 V

Current rating
Im compliance with EN 50618, Table A.3

Temperature range
-40°C to +120°C max. conductor temperature based on EN 60216-1
Ambient temperature range according to EN 50618: -40°C to +90°C

Article number	Conductor cross-section (mm ²)	Outer diameter (mm)	Copper index (kg/km)	Weight (kg/km)
H1Z2Z2-K				
Core insulation: white / Outer sheath: black				
1023552	4.0	5.8	38.4	62
1023553	6.0	6.3	57.6	84
1023554	10.0	7.4	96	126
1023555	16.0	8.1	153.6	197
1023590	25.0	10.3	240	270
1023591	35.0	11.8	336	370
Core insulation: white / Outer sheath: red				
1023572	4.0	5.8	38.4	62
1023573	6.0	6.3	57.6	84
1023574	10.0	7.4	96	126
1023575	16.0	8.1	153.6	197
Core insulation: white / Outer sheath: blue				
1023582	4.0	5.8	38.4	62
1023583	6.0	6.3	57.6	84
1023584	10.0	7.4	96	126
1023585	16.0	8.1	153.6	197

Unless specified otherwise, the shown product values are nominal values. Detailed values (e.g. tolerances) are available upon request.
Copper price basis: EUR 150/100 kg. Refer to catalogue appendix T17 for the definition and calculation of copper-related surcharges.
Please find our standard lengths at: www.lappkabel.de/en/cable-standardlengths
Packaging size: Coil 100 m; Drum (500; 1000) m
Photographs are not to scale and do not represent detailed images of the respective products.

Accessories

- EPIC® CRIMPTOOL refer to main catalogue 2016/17
- EPIC® SOLAR 4 M refer to main catalogue 2016/17
- EPIC® SOLAR 4 F refer to main catalogue 2016/17
- KS 20 cable shears refer to main catalogue 2016/17



ÖLFLEX® SOLAR XLWP

Electron beam cross-linked solar cables with optimized performance in water - EN 50618 type

Info

- Optimised cable design - constant high volume resistance even after long-term period in water
- H1Z2Z2-K (code designation according to EN 50618)
- Substitutes previous ÖLFLEX® SOLAR XLR WP



Benefits

- The alternative for long-term storage in water, e.g. as it can occur in case after flooding or in buried conduits
- Reduction of flame propagation and of toxic combustion gases in the event of fire
- Robust against mechanical impacts
- Extruded colour stripe serves as reverse polarity protection during installation.
- Exact quantity control during installation by meter marking on the cable sheath

Application range

- For underground installation in conduits, in which water, heat and moisture can accumulate
- For the cabling between the solar modules and as extension cable between the module strings and the DC/AC inverter
- Gable and flat roof photovoltaic systems
- Photovoltaic plants and solar parks
- Suitable for direct burial: see data sheet

Product features

- Weather/UV-resistant acc. to EN 50618, appendix E
- Ozone-resistant according to EN 50396
- Halogen-free and flame-retardant
- Good notch and abrasion resistance
- XLWP = X-Linked Water-Proof Proven electron beam cross-linked quality

Norm references / Approvals

- H1Z2Z2-K (code designation according to EN 50618)
- Items with other cross-sections on request

Product Make-up

- Fine-wire, tinned-copper conductor
- Core insulation made of electron beam cross-linked copolymer
- Colour of core insulation: white
- Outer sheath made of electron beam cross-linked copolymer
- Outer sheath colour: black respectively black with red stripe

Technical data

Classification
 ETIM 5.0 Class-ID: EC001578
 ETIM 5.0 Class-Description: Flexible cable

Conductor stranding
 Fine wire according to VDE 0295, class 5/IEC 60228 class 5

Minimum bending radius
 Fixed installation: 4 x outer diameter

Nominal voltage
 AC U_0/U : 1,0/1,0 kV
 DC U_0/U : 1,5/1,5 kV
 Max. permissible operating voltage: DC 1,8 kV

Test voltage
 AC 6500 V

Current rating
 Im compliance with EN 50618, Table A.3

Temperature range
 -40°C to +120°C max. conductor temperature based on EN 60216-1
 Ambient temperature range according to EN 50618: -40°C to +90°C

Article number	Conductor cross-section (mm ²)	Outer diameter (mm)	Copper index (kg/km)	Weight (kg/km)
ÖLFLEX® SOLAR XLWP				
Core insulation: white / Outer sheath: black				
1023601	4.0	5.8	38.4	68.1
1023602	6.0	6.4	57.6	91.6
1023603	10.0	7.6	96	138.6
1023604	16.0	9.1	153.6	209.7
Core insulation: white / Outer sheath: black with red stripe				
1023621	4.0	5.8	38.4	68.1
1023622	6.0	6.4	57.6	91.6
1023623	10.0	7.6	96	138.6
1023624	16.0	9.1	153.6	209.7

Unless specified otherwise, the shown product values are nominal values. Detailed values (e.g. tolerances) are available upon request.
 Copper price basis: EUR 150/100 kg. Refer to catalogue appendix T17 for the definition and calculation of copper-related surcharges.
 Please find our standard lengths at: www.lappkabel.de/en/cable-standardlengths
 Packaging size: Coil 100 m; Drum (500; 1000) m
 Photographs are not to scale and do not represent detailed images of the respective products.

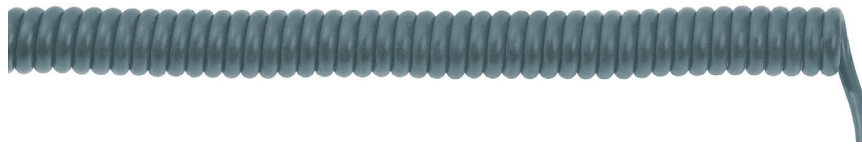
Accessories

- EPIC® SOLAR 4 M refer to main catalogue 2016/17
- EPIC® SOLAR 4 F refer to main catalogue 2016/17
- UNIVERSAL STRIP stripping tool refer to main catalogue 2016/17
- KS 20 cable shears refer to main catalogue 2016/17



UNITRONIC® SPIRAL LiF2Y11Y

Spiral cable with outer PUR sheath for exact impulse transmission, unshielded



Info

- New: the unscreened spiral cables with small cross section
- High restoring forces
- PUR outer sheath

Benefits

- Extended lengths of up to 4 times the unextended spiral length
- Suitable for transportable machines and appliances
- Transmission of control and measuring signals

Application range

- For requirements of electronic applications
- In measurement and control engineering
- Handling and measurement equipment
- Conveyor and transport systems

Product features

- Abrasion and cut-resistant
- Very high flexibility
- Halogen-free and flame-retardant

Product Make-up

- Strands of bare copper wires
- Core insulation: Based on Polyolefin
- Outer sheath: PUR compound
- Outer sheath colour: grey
- Length of straight ends:
1st end = 200 mm, 2nd end = 600 mm
- Versions without the mandatory LAPP designation, but with other solid lengths, end lengths and end forms available on request

Technical data

Classification
ETIM 5.0 Class-ID: EC000247
ETIM 5.0 Class-Description:
Spiralized cable

Core identification code
DIN 47100

Peak operating voltage
250 V (not for power transmission)

Conductor stranding
Extra-fine wire according to VDE 0295, class 6/IEC 60228 class 6

Test voltage
1200 V

Temperature range
Flexing: -5°C to +50°C

Article number	Number of cores and mm ² per conductor	Spiral length, extended (mm)	Spiral length, unextended (mm)	Cable diameter (mm)	Spiral outer diameter (mm)	Pieces / PU
UNITRONIC® SPIRAL LiF2Y11Y						
73220300	2 x 0.14	400	100	3.4	14	5
73220301	2 x 0.14	800	200	3.4	14	5
73220302	2 x 0.14	1200	300	3.4	14	5
73220303	2 x 0.14	1600	400	3.4	14	5
73220304	2 x 0.14	2000	500	3.4	14	5
73220305	3 x 0.14	400	100	3.9	15	5
73220306	3 x 0.14	800	200	3.9	15	5
73220307	3 x 0.14	1200	300	3.9	15	5
73220308	3 x 0.14	1600	400	3.9	15	5
73220309	3 x 0.14	2000	500	3.9	15	5
73220310	4 x 0.14	400	100	4.2	17	5
73220311	4 x 0.14	800	200	4.2	17	5
73220312	4 x 0.14	1200	300	4.2	17	5
73220313	4 x 0.14	1600	400	4.2	17	5
73220314	4 x 0.14	2000	500	4.2	17	5
73220315	5 x 0.14	400	100	4.5	19	5
73220316	5 x 0.14	800	200	4.5	19	5
73220317	5 x 0.14	1200	300	4.5	19	5
73220318	5 x 0.14	1600	400	4.5	19	5
73220319	5 x 0.14	2000	500	4.5	19	5
73220320	6 x 0.14	400	100	5.1	20	5
73220321	6 x 0.14	800	200	5.1	20	5
73220322	6 x 0.14	1200	300	5.1	20	5
73220323	6 x 0.14	1600	400	5.1	20	5
73220324	6 x 0.14	2000	500	5.1	20	5
73220325	7 x 0.14	400	100	5.1	20	5
73220326	7 x 0.14	800	200	5.1	20	5
73220327	7 x 0.14	1200	300	5.1	20	5
73220328	7 x 0.14	1600	400	5.1	20	5
73220329	7 x 0.14	2000	500	5.1	20	5
73220330	12 x 0.14	400	100	6.3	23	1
73220331	12 x 0.14	800	200	6.3	23	1
73220332	12 x 0.14	1200	300	6.3	23	1
73220333	12 x 0.14	1600	400	6.3	23	1
73220334	12 x 0.14	2000	500	6.3	23	1
73220335	18 x 0.14	400	100	6.8	24	1
73220336	18 x 0.14	800	200	6.8	24	1
73220337	18 x 0.14	1200	300	6.8	24	1
73220338	18 x 0.14	1600	400	6.8	24	1
73220339	18 x 0.14	2000	500	6.8	24	1
73220340	2 x 0.25	400	100	4.3	18	5
73220341	2 x 0.25	800	200	4.3	18	5
73220342	2 x 0.25	1200	300	4.3	18	5
73220343	2 x 0.25	1600	400	4.3	18	5
73220344	2 x 0.25	2000	500	4.3	18	5

Article number	Number of cores and mm ² per conductor	Spiral length, extended (mm)	Spiral length, unextended (mm)	Cable diameter (mm)	Spiral outer diameter (mm)	Pieces / PU
73220345	3 x 0.25	400	100	4.5	19	5
73220346	3 x 0.25	800	200	4.5	19	5
73220347	3 x 0.25	1200	300	4.5	19	5
73220348	3 x 0.25	1600	400	4.5	19	5
73220349	3 x 0.25	2000	500	4.5	19	5
73220350	4 x 0.25	400	100	4.9	20	5
73220351	4 x 0.25	800	200	4.9	20	5
73220352	4 x 0.25	1200	300	4.9	20	5
73220353	4 x 0.25	1600	400	4.9	20	5
73220354	4 x 0.25	2000	500	4.9	20	5
73220355	5 x 0.25	400	100	5.3	20	5
73220356	5 x 0.25	800	200	5.3	20	5
73220357	5 x 0.25	1200	300	5.3	20	5
73220358	5 x 0.25	1600	400	5.3	20	5
73220359	5 x 0.25	2000	500	5.3	20	5
73220360	6 x 0.25	400	100	6.1	21	5
73220361	6 x 0.25	800	200	6.1	21	5
73220362	6 x 0.25	1200	300	6.1	21	5
73220363	6 x 0.25	1600	400	6.1	21	5
73220364	6 x 0.25	2000	500	6.1	21	5
73220365	7 x 0.25	400	100	6.1	21	5
73220366	7 x 0.25	800	200	6.1	21	5
73220367	7 x 0.25	1200	300	6.1	21	5
73220368	7 x 0.25	1600	400	6.1	21	5
73220369	7 x 0.25	2000	500	6.1	21	5
73220370	12 x 0.25	400	100	7.5	28	1
73220371	12 x 0.25	800	200	7.5	28	1
73220372	12 x 0.25	1200	300	7.5	28	1
73220373	12 x 0.25	1600	400	7.5	28	1
73220374	12 x 0.25	2000	500	7.5	28	1
73220375	18 x 0.25	400	100	8.5	31	1
73220376	18 x 0.25	800	200	8.5	31	1
73220377	18 x 0.25	1200	300	8.5	31	1
73220378	18 x 0.25	1600	400	8.5	31	1
73220379	18 x 0.25	2000	500	8.5	31	1

Unless specified otherwise, the shown product values are nominal values. Detailed values (e.g. tolerances) are available upon request.
 Copper price basis: EUR 150/100 kg. Refer to catalogue appendix T17 for the definition and calculation of copper-related surcharges.
 Photographs are not to scale and do not represent detailed images of the respective products.
 Versions without the mandatory LAPP designation, but with other solid lengths, end lengths and end forms available on request

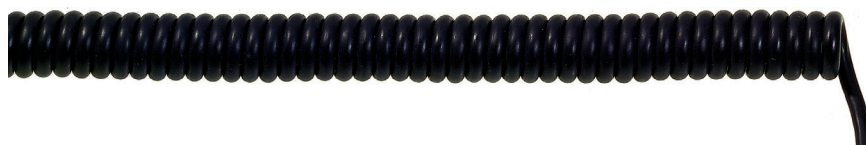
Accessories

- SKINTOP® CLICK refer to main catalogue 2016/17



UNITRONIC® SPIRAL

Spiral cable with outer PUR sheath and overall shielding for exact impulse transmission



Info

- Secure against electrical interferences
- PUR outer sheath
- New: Now available in cross section 0,25mm²

Benefits

- Overall screening prevents high frequency interference and guarantees accurate signal transmission
- Extended lengths of up to 4 times the unextended spiral length

Application range

- In measurement and control engineering
- Wherever screened cables with smallest dimensions are required
- For requirements of electronic applications
- Handling and measurement equipment
- Conveyor and transport systems

Product features

- Abrasion and cut-resistant
- Very high flexibility

Product Make-up

- Strands of bare copper wires
- Core insulation: Based on PVC
- Screening: wrapped with braided copper wires
- Outer sheath: PUR compound
- Color of the outer jacket: Black
- Length of straight ends:
1st end = 200 mm, 2nd end = 600 mm
- Versions without the mandatory LAPP designation, but with other solid lengths, end lengths and end forms available on request

Technical data

	Classification ETIM 5.0 Class-ID: EC000247 ETIM 5.0 Class-Description: Spiralized cable
	Core identification code DIN 47100
	Peak operating voltage 250 V (not for power transmission)
	Conductor stranding Extra-fine wire according to VDE 0295, class 6/IEC 60228 class 6
	Test voltage 1200 V
	Temperature range Flexing: -5°C to +50°C

Article number	Number of cores and mm ² per conductor	Spiral length, extended (mm)	Spiral length, unextended (mm)	Cable diameter (mm)	Spiral outer diameter (mm)	Pieces / PU
UNITRONIC® SPIRAL						
73220200	2 x 0.14	400	100	4.1	15	5
73220201	2 x 0.14	800	200	4.1	15	5
73220202	2 x 0.14	1200	300	4.1	15	5
73220203	2 x 0.14	1600	400	4.1	15	5
73220204	2 x 0.14	2000	500	4.1	15	5
73220205	3 x 0.14	400	100	4.3	18	5
73220206	3 x 0.14	800	200	4.3	18	5
73220207	3 x 0.14	1200	300	4.3	18	5
73220208	3 x 0.14	1600	400	4.3	18	5
73220209	3 x 0.14	2000	500	4.3	18	5
73220210	4 x 0.14	400	100	4.5	19	5
73220211	4 x 0.14	800	200	4.5	19	5
73220212	4 x 0.14	1200	300	4.5	19	5
73220213	4 x 0.14	1600	400	4.5	19	5
73220214	4 x 0.14	2000	500	4.5	19	5
73220215	5 x 0.14	400	100	4.8	20	5
73220216	5 x 0.14	800	200	4.8	20	5
73220217	5 x 0.14	1200	300	4.8	20	5
73220218	5 x 0.14	1600	400	4.8	20	5
73220219	5 x 0.14	2000	500	4.8	20	5
73220220	6 x 0.14	400	100	5.5	21	5
73220221	6 x 0.14	800	200	5.5	21	5
73220222	6 x 0.14	1200	300	5.5	21	5
73220223	6 x 0.14	1600	400	5.5	21	5
73220224	6 x 0.14	2000	500	5.5	21	5
73220225	7 x 0.14	400	100	5.9	23	5
73220226	7 x 0.14	800	200	5.9	23	5
73220227	7 x 0.14	1200	300	5.9	23	5
73220228	7 x 0.14	1600	400	5.9	23	5
73220229	7 x 0.14	2000	500	5.9	23	5
73220230	12 x 0.14	400	100	7.2	27	1
73220231	12 x 0.14	800	200	7.2	27	1
73220232	12 x 0.14	1200	300	7.2	27	1
73220233	12 x 0.14	1600	400	7.2	27	1
73220234	12 x 0.14	2000	500	7.2	27	1
73220235	18 x 0.14	400	100	8	29	1
73220236	18 x 0.14	800	200	8	29	1
73220237	18 x 0.14	1200	300	8	29	1
73220238	18 x 0.14	1600	400	8	29	1
73220239	18 x 0.14	2000	500	8	29	1
73220240	2 x 0.25	400	100	4.3	18	5
73220241	2 x 0.25	800	200	4.3	18	5
73220242	2 x 0.25	1200	300	4.3	18	5
73220243	2 x 0.25	1600	400	4.3	18	5
73220244	2 x 0.25	2000	500	4.3	18	5

Article number	Number of cores and mm ² per conductor	Spiral length, extended (mm)	Spiral length, unextended (mm)	Cable diameter (mm)	Spiral outer diameter (mm)	Pieces / PU
73220245	3 x 0.25	400	100	4.5	19	5
73220246	3 x 0.25	800	200	4.5	19	5
73220247	3 x 0.25	1200	300	4.5	19	5
73220248	3 x 0.25	1600	400	4.5	19	5
73220249	3 x 0.25	2000	500	4.5	19	5
73220250	4 x 0.25	400	100	4.9	21	5
73220251	4 x 0.25	800	200	4.9	21	5
73220252	4 x 0.25	1200	300	4.9	21	5
73220253	4 x 0.25	1600	400	4.9	21	5
73220254	4 x 0.25	2000	500	4.9	21	5
73220255	5 x 0.25	400	100	5.3	21	5
73220256	5 x 0.25	800	200	5.3	21	5
73220257	5 x 0.25	1200	300	5.3	21	5
73220258	5 x 0.25	1600	400	5.3	21	5
73220259	5 x 0.25	2000	500	5.3	21	5
73220260	6 x 0.25	400	100	5.3	21	5
73220261	6 x 0.25	800	200	5.3	21	5
73220262	6 x 0.25	1200	300	5.3	21	5
73220263	6 x 0.25	1600	400	5.3	21	5
73220264	6 x 0.25	2000	500	5.3	21	5
73220265	7 x 0.25	400	100	6.1	24	5
73220266	7 x 0.25	800	200	6.1	24	5
73220267	7 x 0.25	1200	300	6.1	24	5
73220268	7 x 0.25	1600	400	6.1	24	5
73220269	7 x 0.25	2000	500	6.1	24	5
73220270	12 x 0.25	400	100	7.2	27	1
73220271	12 x 0.25	800	200	7.2	27	1
73220272	12 x 0.25	1200	300	7.2	27	1
73220273	12 x 0.25	1600	400	7.2	27	1
73220274	12 x 0.25	2000	500	7.2	27	1
73220275	18 x 0.25	400	100	8.5	31	1
73220276	18 x 0.25	800	200	8.5	31	1
73220277	18 x 0.25	1200	300	8.5	31	1
73220278	18 x 0.25	1600	400	8.5	31	1
73220279	18 x 0.25	2000	500	8.5	31	1

Unless specified otherwise, the shown product values are nominal values. Detailed values (e.g. tolerances) are available upon request.
 Copper price basis: EUR 150/100 kg. Refer to catalogue appendix T17 for the definition and calculation of copper-related surcharges.
 Photographs are not to scale and do not represent detailed images of the respective products.
 Versions without the mandatory LAPP designation, but with other solid lengths, end lengths and end forms available on request

Accessories

- SKINTOP® CLICK refer to main catalogue 2016/17



UNITRONIC® ROBUST S/A FD

High flexible, halogen-free sensor/actuator cable - resistant to a wide range of chemical media

LAPP KABEL STUTTGART UNITRONIC® ROBUST S/A FD



Info

- Good chemical resistance
- Excellent weather resistance
- Flexible at low temperatures

Benefits

- Outstanding weather, ozone and UV resistance together with the wide temperature range enable versatile use for indoor and outdoor applications
- Resistant to contact with plant, animal or synthetic-based organic oils, greases, waxes and the related emulsions
- Good resistance to cold and hot water as well as water-soluble cleaning agents
- Well-suited to frequent steam cleaning
- Good resistance to ammonia compounds and bio-gases

Application range

- Automation technology
- Machine tool building, medical technology, laundries, car washing equipment, chemical industry, composting plants, sewage works
- Food and beverage industry, especially for production and processing equipment of milk and meat products

Product features

- Core colour code according to EN 60947-5-2
- Good chemical resistance to ester-based hydraulic fluids
- Ozone, UV and weather-resistant according to EN 50396 and HD 605 S2
- Halogen-free
- Suitable for drag chains

Norm references / Approvals

- **ECOLAB®**
Industry standard in the field of professional cleaning and disinfection in the food and beverage industry
- Certified resistance to disinfection and cleaning solutions used in food and beverage industry

Product Make-up

- Extra-fine wire strand made of bare copper
- Core insulation: PP
- Colour-code:
3-pin: bn, bu, bk
4-pin: bn, wh, bu, bk
5-pin: bn, wh, bu, bk, gy
- Outer sheath made of special TPE
- Color of the outer jacket: Black

Technical data



Classification

ETIM 5.0 Class-ID: EC001578
ETIM 5.0 Class-Description:
Flexible cable



Conductor stranding

Stranded, extra-fine wire



Minimum bending radius

Flexing: 5 x outer diameter
Fixed installation: 3 x outer diameter



Temperature range

Flexing: -40°C to +90°C
Fixed installation: -50°C to +90°C

Article number	Dimensions (mm ²)	Outer diameter (mm)	Colour	Copper index (kg/km)
0,25 mm²				
7038897	4x0.25	4.9	black	10.2
0,34 mm²				
7038895	3 x 0.34	5	black	9.8
7038894	4 x 0.34	5.4	black	13.1
7038896	5 x 0.34	5.9	black	16

Unless specified otherwise, the shown product values are nominal values. Detailed values (e.g. tolerances) are available upon request.

Copper price basis: EUR 150/100 kg. Refer to catalogue appendix T17 for the definition and calculation of copper-related surcharges.

Please find our standard lengths at: www.lappkabel.de/en/cable-standardlengths

Other types of composition are available upon request.

Photographs are not to scale and do not represent detailed images of the respective products.

Accessories

- EPIC® SENSOR M12 refer to main catalogue 2016/17
- EPIC® SENSOR M8 refer to main catalogue 2016/17
- STAR STRIP stripping tool refer to main catalogue 2016/17
- SMART STRIP stripping tool refer to main catalogue 2016/17



ETHERLINE® EC FLEX Cat.5e

Flexible use

Info

- For EtherCAT applications
- Cat.5e-Performance
- Only for patch cable applications (max. 60 m)



Benefits

- Can be used for Industrial Ethernet in harsh industrial environments
- Can be used in dry or damp rooms
- Lower space requirement

Application range

- Suitable for EtherCAT and EtherNet/IP applications
- For flexible applications (7-wire stranded conductor)
- Many applications with Industrial Ethernet, i.e. fixed installation and flexible use.
- For internal wiring of electric and electronic equipment in switch cabinets
- Only for patch cable applications (max. 60 m)

Product features

- PUR (Polyurethane) Version with increased robustness, UV- resistance and halogen free
- Meets the requirements according to CAT.5e, ISO/IEC 11801 and EN 50173, Class D
- High-quality, double screening ensures high transmission reliability in areas with electromagnetic interference

Norm references / Approvals

- Certification: UL/CSA type CMX in accordance with UL 444 and CSA C22.2 no. 214
- Flame-retardant according to UL VW1/CSA FT1

Product Make-up

- Stranded tinned 7-wire conductor
- Core insulation: PE
- Insulation colour-codes: orange/white-orange; green/white-green
- Star quad
- SF/UTP: braid of tinned copper wire and plastic laminated aluminum foil as overall screening
- PVC or PUR jacket material
- Colour: green (based on RAL 6018)

Technical data

Classification
ETIM 5.0 Class-ID: EC000830
ETIM 5.0 Class-Description: Data cable

Peak operating voltage
max. 100 V (not for power applications)

Minimum bending radius
Fixed installation: 4 x outer diameter
Flexing: 8 x outer diameter

Characteristic impedance
100 Ohm +/- 15%

Temperature range
fixed installation
PVC: -30°C to +80°C
PUR: -40°C to +80°C
flexing
PVC: -5°C to +50°C
PUR: -30°C to +50°C

Article number	Article designation	Number of pairs and AWG per conductor	Max. outer diameter (mm)	Copper index (kg/km)	Weight (kg/km)
PVC outer sheath					
2170430	ETHERLINE® Y EC FLEX Cat.5e	1 x 4 x AWG26/7	5,1	20	37
PUR outer sheath, halogen-free					
2170431	ETHERLINE® P EC FLEX Cat.5e	1 x 4 x AWG26/7	5,1	20	35

Unless specified otherwise, the shown product values are nominal values. Detailed values (e.g. tolerances) are available upon request. Detailed data sheets are available upon request. Please specify the type/dimensions of the required cable. Photographs are not to scale and do not represent detailed images of the respective products.

Accessories

- EPIC® SENSOR M8 refer to main catalogue 2016/17
- Field-Terminable Connector RJ45 CAT.5e FM45 refer to main catalogue 2016/17



ETHERLINE® EC FD Cat.5e

Highly flexible application

LAPP KABEL STUÏTGART ETHERLINE® P EC FD Cat.5e



Info

- For EtherCAT applications
- For highly flexible industrial applications
- Cat.5e-Performance

Benefits

- Can be used for Industrial Ethernet in harsh industrial environments
- Can be used in dry or damp rooms
- Lower space requirement

Application range

- Suitable for EtherCAT and EtherNet/IP applications
- For highly flexible applications (power chains, moving machine parts)
- Many applications with Industrial Ethernet, e.g. EtherCat, i.e. fixed installation, flexible and highly flexible use
- For internal wiring of electric and electronic equipment in switch cabinets
- Only for patch cable applications (max. 60 m)

Product features

- PUR outer sheath, halogen-free
- Meets the requirements according to CAT.5e, ISO/IEC 11801 and EN 50173, Class D
- High-quality, double screening ensures high transmission reliability in areas with electromagnetic interference

Norm references / Approvals

- UL/CSA type CMX in accordance with UL 444 and CSA C22.2 no. 214-02
- Flame-retardant according to UL VW1/CSA FT1
- Halogen-free according to VDE 0472-815

Product Make-up

- Tinned stranded copper wire, 26AWG (19 x 0.10), (0.14 mm²)
- Core insulation: PE
- Insulation colour-codes: orange/white-orange; green/white-green
- Star quad
- SF/UTP: braid of tinned copper wire and plastic laminated aluminum foil as overall screening
- Outer sheath: PUR compound, halogen-free
- Colour: green (based on RAL 6018)

Technical data



Classification

ETIM 5.0 Class-ID: EC000830
ETIM 5.0 Class-Description: Data cable



Peak operating voltage

max. 100 V (not for power applications)



Minimum bending radius

Fixed installation: 4 x Outer diameter
Flexing: 8 x outer diameter



Characteristic impedance

100 Ohm +/- 15%



Temperature range

Fixed installation: -40°C to +80°C
Flexing: -30°C to +50°C

Article number	Article designation	Number of pairs and AWG per conductor	Max. outer diameter (mm)	Copper index (kg/km)	Weight (kg/km)
ETHERLINE® EC FD Cat.5e					
2170433	ETHERLINE® P EC FD Cat.5e	1 x 4 x AWG26/19	5.0	20	35

Unless specified otherwise, the shown product values are nominal values. Detailed values (e.g. tolerances) are available upon request. Detailed data sheets are available upon request. Please specify the type/dimensions of the required cable. Photographs are not to scale and do not represent detailed images of the respective products.

Accessories

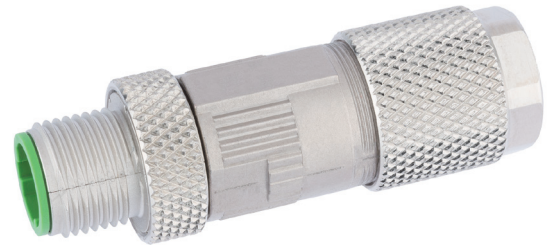
- EPIC® SENSOR M8 refer to main catalogue 2016/17



EPIC® DATA M12D
M12 D-coded connectors

i Info

- CAT.5-Performance
- Installation without tools



Product features

- Field assembly Industrial Ethernet connector, M12 D-coded according to IEC 61076-2-101
- Suitable for use in industrial applications
- Robust and vibrations- resistant
- Toolfree installation, small and compact design

Norm references / Approvals

- Data transmission is conform to category Cat.5 acc. to ISO 11801

Technical data

ETIM **Classification**
ETIM 5.0 Class-ID: EC001121
ETIM 5.0 Class-Description:
Modular connector

IP **Protection rating**
IP 67

Temperature **Ambient temperature (operation)**
-25°C to +85°C

Article number	Article designation	Min. outer diameter (mm)	Max. outer diameter (mm)	AWG solid	AWG 7-wire
M12 D-coded plug, straight, colour coding acc. to PROFINET					
21700647	ED-IE-AX-M12D-5-PN-67-FC	6.2	9.7	24 - 22	26 - 22
M12 D-coded plug, straight, colour coding acc. to TIA 568					
21700648	ED-IE-AX-M12D-5-67	5	6.1	24 - 22	26 - 22
M12 D-coded socket, straight, TIA 568 colour coding					
22261016	AB-C4-M12FSD-SH	4	8	26 - 22	26 - 22

Photographs are not to scale and do not represent detailed images of the respective products.

Customized Pre-Assembled FO Cable Solutions

ÖLFLEX® CONNECT – integrated solutions made by Lapp

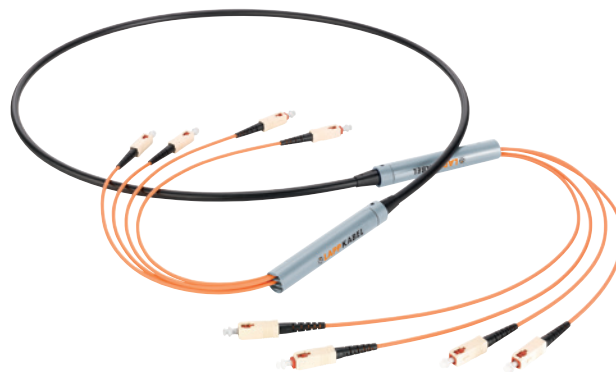
Lapp is offering an integrated solution with **ÖLFLEX® CONNECT** – cables assembled exactly to your requirements. Everything is possible – from traditional cable assemblies to industry standard servo connections right up to highly complex drag chain systems. With **ÖLFLEX® CONNECT** Lapp offers as well customized fibre optic system assemblies (FO trunks).

Customers can choose the right cable from the wide range of HITRONIC® fibre optic cables which can be assembled exactly as per customer specification.

By using factory assembled fibre optic cable solutions the installation for industry, telecommunication and office applications are significantly simplified.

Depending on the planning approach, time consuming connector installation or splicing at site can be avoided. Just lay the trunk system and simply plug it in with the factory pre-assembled connectors.

A plug & play solution from Lapp.



Technical benefits

- No splice connections are necessary during installation. This saves time and costs for equipment and special tooling.
- Low attenuation values by factory preassembled plugs
- Trunk-system are easy to use without any further time consuming on-site processing
- Available with all major cable and connector types (Lapp HITRONIC® range)
- Ready to use fibre optic cabling system
- IP 68 metallic cable unit splitter for glass fibre (GOF) loose tube cables up to 48 fibres

In a few steps to a customized FO-trunk-system:

- 1. Determination of the required fibre type**
 - POF (980/1000)
 - PCF (200/230)
 - GOF (single-mode 9/125 OS2)
(multimode 62,5/125 OM1)
(multimode 50/125 OM2; OM3; OM4)
- 2. Selection of cable type and version**
See HITRONIC® cable range
(POF, PCF und GOF and number of fibers)
- 3. Determination of the system length**
- 4. Connector configuration**
Selection of connector type – side 1 and 2
- 5. Cable pulling device**
Selection cable pulling device
side 1 and/or side 2
- 6. Specific requirements**
Regarding packaging and marking
- 7. Lapp in-house**
Lapp will check the technical feasibility and plausibility (fibre – cable – connector) and make a quotation
- 8. Easy ordering and fast shipping**

For questions about customized packaging and special issues we are happy to assist you.

Selection example:

Short designation:
TRUNK GOF HUN1500-4E9/125-SC/LC-85m

Description:

- Customized pre-assembled fibre optic cable solution
- Based on cable version
HITRONIC® HUN 4E9/125 OS2
- Assembled at both ends with connectors
 - side 1: 2 x SC-duplex connector
 - side 2: 2 x LC-duplex connector
- Cable splitter unit IP68:
 - up to zu 24 fibres
 - M20 through hole
- Side 1 protected with a cable pulling device
 - outer diameter < 30 mm
- System length 85 m
- On disposable drum

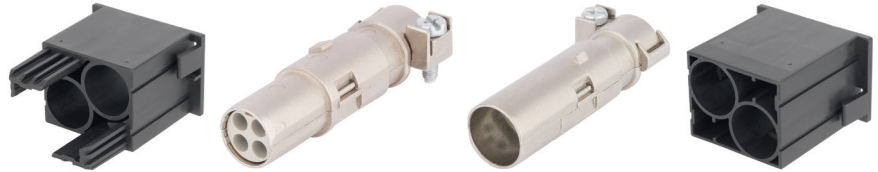


EPIC® MC BUS

The mixed assembly guarantees high flexibility. For applications in mechanical and plant engineering, for printing machines and slide-in technology.

i Info

- Shielded modul for data and signal transmission
- Available 2017



Suitable housing

- EPIC® MCR Frames refer to main catalogue 2016/17

Suitable contacts:

- EPIC® H-D 1.6 machined contacts refer to main catalogue 2016/17

Benefits

- Shielded modul for data and signal transmission
- Crimp connection for permanent vibration proof contact
- CAT5e up to 1 Gigabit/s
- Cable clamp 3 - 9mm
- The mix of different functions in one plug guarantees high flexibility

Application range

- Mechanical engineering
- Robotics industry
- Plant engineering
- Renewable energy

Technical data

	Classification ETIM 5.0 Class-ID: EC002641 ETIM 5.0 Class-Description: Modular connector (industrial connector)		Number of contacts 8
	Rated voltage (V) 50		Termination methods Crimp termination: 0.14 - 2.5 mm ²
	Rated impulse voltage 0,8 kV		Material PA
	Rated current (A) 10		Cycle of mechanical operation 500
	Degree of soiling 3		Temperature range -40°C +125°C

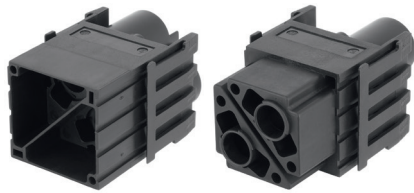
Article number	Article description	Number of operating contacts	Slots	Pieces / PU
EPIC® MC BUS				
10390410	EPIC® MCS BUS 2x(4) CM	2x (4 + shield)	2	10
10390411	EPIC® MCB BUS 2x(4) CM	2x (4 + shield)	2	10
EPIC® MC BUS PIN				
10390412	EPIC® MCS BUS PIN 1x(4) CM	4 + shield		10
10390413	EPIC® MCB BUS PIN 1x(4) CM	4 + shield		10

Photographs are not to scale and do not represent detailed images of the respective products.



EPIC® MH 2

High flexibility by the use of any combination of inserts in one connector



Info

- Modular connector System, mateable with the market standard
- High power module 2pole for compact power transmission
- Available 2017

Suitable housing

- EPIC® MH Modular System frame refer to main catalogue 2016 / 17
- EPIC® H-B housing use in high version

Suitable contacts:

- EPIC® MH 8.0mm Contacts Page 38

Benefits

- High power module 2pole for compact power transmission
- Crimp connection for permanent vibration proof contact
- EPIC® MH system is mateable with the market standard
- The mix of different functions in one plug guarantees high flexibility
- Railway applications
 - Fire protection on railway vehicles: Test according EN 45545-2. Requirement sets R22 and R23. Hazard level HL 1, HL2 and HL4

Application range

- Mechanical engineering
- Robotics industry
- Plant engineering
- Renewable energy
- Railway applications / vehicle construction

Technical data

Classification ETIM 5.0 Class-ID: EC002641 ETIM 5.0 Class-Description: Modular connector (industrial connector)	Contact resistance < 5 mOhm
Rated voltage (V) 1000 V	Number of contacts 2
Rated impulse voltage 8 kV	Termination methods Crimp termination: 10 mm ² ... 35 mm ²
Rated current (A) 100 A	Material Polyamide, glass fibre-reinforced
Degree of soiling 3	Cycle of mechanical operation 500
	Temperature range -40 °C +125 °C

Article number	Article description	Contact type	Number of operating contacts	Slots	Pieces / PU
EPIC® MH 2					
44423212	EPIC® MHS 2 CM	male	2	2	10
44423213	EPIC® MHB 2 CM	female	2	2	10

Photographs are not to scale and do not represent detailed images of the respective products.

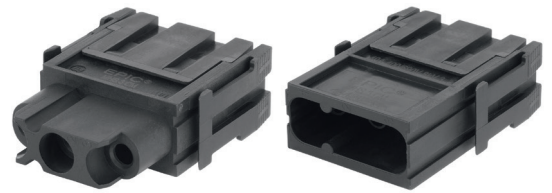


EPIC® MH 3

High flexibility by the use of any combination of inserts in one connector

Info

- Modular connector System, mateable with the market standard
- Power module 3pole for compact power transmission
- Available 2017



Suitable housing

- EPIC® MH Modular System frame refer to main catalogue 2016/17
- EPIC® H-B housing use in high version

Suitable contacts:

- EPIC® MH 4.0mm Contacts Page 38

Benefits

- Power module 3pole for compact power transmission
- Crimp connection for permanent vibration proof contact
- EPIC® MH system is mateable with the market standard
- The mix of different functions in one plug guarantees high flexibility
- Railway applications
 - Fire protection on railway vehicles: Test according EN 45545-2. Requirement sets R22 and R23. Hazard level HL1, HL2 and HL4

Application range

- Mechanical engineering
- Robotics industry
- Plant engineering
- Renewable energy
- Railway applications / vehicle construction

Technical data

Classification ETIM 5.0 Class-ID: EC002641 ETIM 5.0 Class-Description: Modular connector (industrial connector)	Contact resistance < 5 mOhm
Rated voltage (V) 830 V	Number of contacts 3
Rated impulse voltage 8 kV	Termination methods Crimp termination: 1.5 mm ² - 10 mm ²
Rated current (A) 40 A	Material Polyamide, glass fibre-reinforced
Degree of soiling 3	Cycle of mechanical operation 500
	Temperature range -40 °C +125 °C

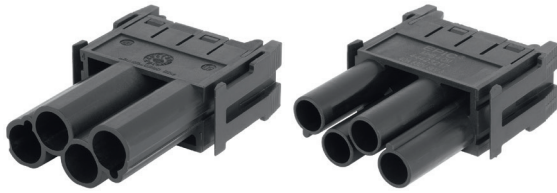
Article number	Article description	Contact type	Number of operating contacts	Slots	Pieces / PU
EPIC® MH 3					
44423214	EPIC® MHS 3 CM	male	3	1	10
44423215	EPIC® MHB 3 CM	female	3	1	10

Photographs are not to scale and do not represent detailed images of the respective products.



EPIC® MH 4

High flexibility by the use of any combination of inserts in one connector



Info

- Modular connector System, mateable with the market standard
- Power module 4 pole for compact power transmission
- Available 2017

Suitable housing

- EPIC® MH Modular System frame refer to main catalogue 2016 / 17
- EPIC® H-B housing use in high version

Suitable contacts:

- EPIC® MH 4.0mm Contacts Page 38

Benefits

- Power module 4 pole for compact power transmission
- Crimp connection for permanent vibration proof contact
- EPIC® MH system is mateable with the market standard
- The mix of different functions in one plug guarantees high flexibility
- Railway applications
 - Fire protection on railway vehicles: Test according EN 45545-2. Requirement sets R22 and R23. Hazard level HL1, HL2 and HL4

Application range

- Mechanical engineering
- Robotics industry
- Plant engineering
- Renewable energy
- Railway applications / vehicle construction

Technical data



Classification

ETIM 5.0 Class-ID: EC002641
ETIM 5.0 Class-Description:
Modular connector (industrial connector)



Rated voltage (V)

830 V

Rated impulse voltage

8 kV



Rated current (A)

40 A



Degree of soiling

3

Contact resistance

< 5 mOhm



Number of contacts

4



Termination methods

Crimp termination: 1.5 mm² - 10 mm²



Material

Polyamide, glass fibre-reinforced



Cycle of mechanical operation

500



Temperature range

-40 °C

+125 °C

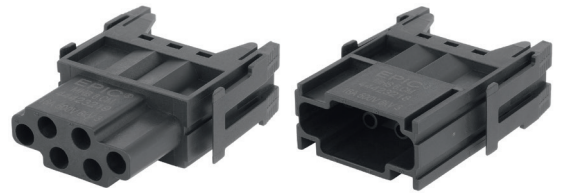
Article number	Article description	Contact type	Number of operating contacts	Slots	Pieces / PU
EPIC® MH 4					
44423216	EPIC® MHS 4 CM	male	4	1	10
44423217	EPIC® MHB 4 CM	female	4	1	10

Photographs are not to scale and do not represent detailed images of the respective products.



EPIC® MH 6

High flexibility by the use of any combination of inserts in one connector



Info

- Modular connector System, mateable with the market standard
- Module 6 pole for control signals
- Available 2017

Suitable housing

- EPIC® MH Modular System frame refer to main catalogue 2016/17
- EPIC® H-B housing use in high version

Suitable contacts:

- EPIC® H-BE 2.5 machined contacts refer to main catalogue 2016/17

Benefits

- Module 6 pole for control signals
- Crimp connection for permanent vibration proof contact
- EPIC® MH system is mateable with the market standard
- The mix of different functions in one plug guarantees high flexibility
- Railway applications
 - Fire protection on railway vehicles: Test according EN 45545-2. Requirement sets R22 and R23. Hazard level HL1, HL2 and HL4

Application range

- Mechanical engineering
- Robotics industry
- Plant engineering
- Renewable energy
- Railway applications / vehicle construction

Technical data

	Classification ETIM 5.0 Class-ID: EC002641 ETIM 5.0 Class-Description: Modular connector (industrial connector)	Contact resistance < 5 mOhm
	Rated voltage (V) 500 V	
	Rated impulse voltage 6 kV	Number of contacts 6
	Rated current (A) 16 A	
	Degree of soiling 3	Termination methods Crimp termination: 0.14 - 4.0 mm ²
		Material Polyamide, glass fibre-reinforced
		Cycle of mechanical operation 500
		Temperature range -40°C +125°C

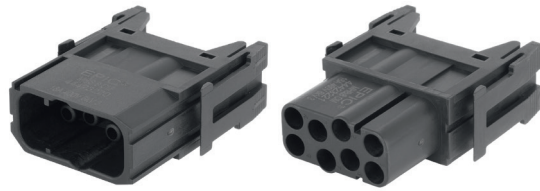
Article number	Article description	Contact type	Number of operating contacts	Slots	Pieces / PU
EPIC® MH 6					
44423218	EPIC® MHS 6 CM	male	6	1	10
44423219	EPIC® MHB 6 CM	female	6	1	10

Photographs are not to scale and do not represent detailed images of the respective products.



EPIC® MH 8

High flexibility by the use of any combination of inserts in one connector



Info

- Modular connector System, mateable with the market standard
- Module 8 pole for control signals
- Available 2017

Suitable housing

- EPIC® MH Modular System frame refer to main catalogue 2016 / 17
- EPIC® H-B housing use in high version

Suitable contacts:

- EPIC® H-BE 2.5 machined contacts refer to main catalogue 2016 / 17

Benefits

- Module 8 pole for control signals
- Crimp connection for permanent vibration proof contact
- EPIC® MH system is mateable with the market standard
- The mix of different functions in one plug guarantees high flexibility
- Railway applications
 - Fire protection on railway vehicles: Test according EN 45545-2. Requirement sets R22 and R23. Hazard level HL1, HL2 and HL4

Application range

- Mechanical engineering
- Robotics industry
- Plant engineering
- Renewable energy
- Railway applications / vehicle construction

Technical data

	Classification ETIM 5.0 Class-ID: EC002641 ETIM 5.0 Class-Description: Modular connector (industrial connector)	Contact resistance < 5 mOhm
	Rated voltage (V) 400 V	Number of contacts 8
	Rated impulse voltage 6 kV	Termination methods Crimp termination: 0.14 - 4.0 mm ²
	Rated current (A) 16 A	Material Polyamide, glass fibre-reinforced
	Degree of soiling 3	Cycle of mechanical operation 500
		Temperature range -40 °C +125 °C

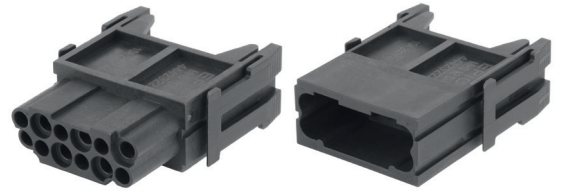
Article number	Article description	Contact type	Number of operating contacts	Slots	Pieces / PU
EPIC® MH 8					
44423220	EPIC® MHS 8 CM	male	8	1	10
44423221	EPIC® MHB 8 CM	female	8	1	10

Photographs are not to scale and do not represent detailed images of the respective products.



EPIC® MH 12

High flexibility by the use of any combination of inserts in one connector



Info

- Modular connector System, mateable with the market standard
- Module 12 pole for control signals
- Available 2017

Suitable housing

- EPIC® MH Modular System frame refer to main catalogue 2016/17
- EPIC® H-B housing use in high version

Suitable contacts:

- EPIC® H-D 1.6 machined contacts refer to main catalogue 2016/17

Benefits

- Module 12 pole for control signals
- Crimp connection for permanent vibration proof contact
- EPIC® MH system is mateable with the market standard
- The mix of different functions in one plug guarantees high flexibility
- Railway applications
 - Fire protection on railway vehicles: Test according EN 45545-2. Requirement sets R22 and R23. Hazard level HL1, HL2 and HL4

Application range

- Mechanical engineering
- Robotics industry
- Plant engineering
- Renewable energy
- Railway applications / vehicle construction

Technical data

<p> Classification ETIM 5.0 Class-ID: EC002641 ETIM 5.0 Class-Description: Modular connector (industrial connector)</p> <p> Rated voltage (V) 250 V</p> <p>Rated impulse voltage 4 kV</p> <p> Rated current (A) 10 A</p> <p> Degree of soiling 3</p>	<p>Contact resistance < 5 mOhm</p> <p> Number of contacts 12</p> <p> Termination methods Crimp termination: 0.14 - 2.5 mm²</p> <p> Material Polyamide, glass fibre-reinforced</p> <p> Cycle of mechanical operation 500</p> <p> Temperature range -40 °C +125 °C</p>
---	--

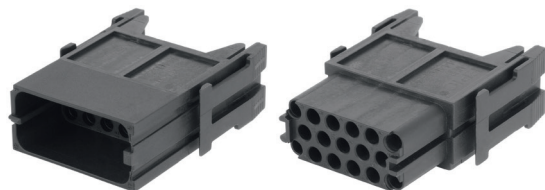
Article number	Article description	Contact type	Number of operating contacts	Slots	Pieces / PU
EPIC® MH 12					
44423222	EPIC® MHS 12 CM	male	12	1	10
44423223	EPIC® MHB 12 CM	female	12	1	10

Photographs are not to scale and do not represent detailed images of the respective products.



EPIC® MH 17

High flexibility by the use of any combination of inserts in one connector



Info

- Modular connector System, mateable with the market standard
- Universal module for 17 contacts in smallest space
- Available 2017

Suitable housing

- EPIC® MH Modular System frame refer to main catalogue 2016 / 17
- EPIC® H-B housing use in high version

Suitable contacts:

- EPIC® H-D 1.6 machined contacts refer to main catalogue 2016 / 17

Benefits

- Universal module for 17 contacts in smallest space
- Crimp connection for permanent vibration proof contact
- EPIC® MH system is mateable with the market standard
- The mix of different functions in one plug guarantees high flexibility
- Railway applications
 - Fire protection on railway vehicles: Test according EN 45545-2. Requirement sets R22 and R23. Hazard level HL 1, HL2 and HL4

Application range

- Mechanical engineering
- Robotics industry
- Plant engineering
- Renewable energy
- Railway applications / vehicle construction

Technical data



Classification

ETIM 5.0 Class-ID: EC002641
ETIM 5.0 Class-Description:
Modular connector (industrial connector)



Rated voltage (V)

160 V

Rated impulse voltage

2.5 kV



Rated current (A)

10 A



Degree of soiling

3

Contact resistance

< 5 mOhm



Number of contacts

17



Termination methods

Crimp termination: 0.14 - 2.5 mm²



Material

Polyamide, glass fibre-reinforced



Cycle of mechanical operation

500



Temperature range

-40 °C

+125 °C

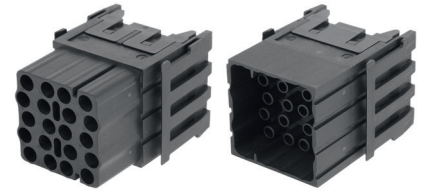
Article number	Article description	Contact type	Number of operating contacts	Slots	Pieces / PU
EPIC® MH 17					
44423224	EPIC® MHS 17 CM	male	17	1	10
44423225	EPIC® MHB 17 CM	female	17	1	10

Photographs are not to scale and do not represent detailed images of the respective products.



EPIC® MH 20

High flexibility by the use of any combination of inserts in one connector



Info

- Modular connector System, mateable with the market standard
- Double module 20 pole for control signals
- Available 2017

Suitable housing

- EPIC® MH Modular System frame refer to main catalogue 2016/17
- EPIC® H-B housing use in high version

Suitable contacts:

- EPIC® H-BE 2.5 machined contacts refer to main catalogue 2016/17

Benefits

- Double module 20 pole for control signals
- Crimp connection for permanent vibration proof contact
- EPIC® MH system is mateable with the market standard
- The mix of different functions in one plug guarantees high flexibility
- Railway applications
 - Fire protection on railway vehicles: Test according EN 45545-2. Requirement sets R22 and R23. Hazard level HL1, HL2 and HL4

Application range

- Mechanical engineering
- Robotics industry
- Plant engineering
- Renewable energy
- Railway applications / vehicle construction

Technical data

	Classification ETIM 5.0 Class-ID: EC002641 ETIM 5.0 Class-Description: Modular connector (industrial connector)		Contact resistance < 5 mOhm
	Rated voltage (V) 500 V		Number of contacts 20
	Rated impulse voltage 6 kV		Termination methods Crimp termination: 0.14 - 4.0 mm ²
	Rated current (A) 16 A		Material Polyamide, glass fibre-reinforced
	Degree of soiling 3		Cycle of mechanical operation 500
			Temperature range -40 °C +125 °C

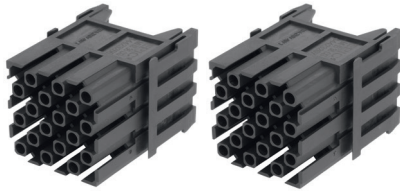
Article number	Article description	Contact type	Number of operating contacts	Slots	Pieces / PU
EPIC® MH 20					
44423226	EPIC® MHS 20 CM	male	20	2	10
44423227	EPIC® MHB 20 CM	female	20	2	10

Photographs are not to scale and do not represent detailed images of the respective products.



EPIC® MH 36

High flexibility by the use of any combination of inserts in one connector



Info

- Modular connector System, mateable with the market standard
- Double module for 36 contacts in smallest space
- Available 2017

Suitable housing

- EPIC® MH Modular System frame refer to main catalogue 2016/17
- EPIC® H-B housing use in high version

Suitable contacts:

- EPIC® H-D 1.6 machined contacts refer to main catalogue 2016/17





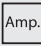


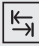

Benefits

- Double module for 36 contacts in smallest space
- Crimp connection for permanent vibration proof contact
- EPIC® MH system is mateable with the market standard
- The mix of different functions in one plug guarantees high flexibility
- Railway applications
 - Fire protection on railway vehicles: Test according EN 45545-2. Requirement sets R22 and R23. Hazard level HL1, HL2 and HL4

Application range

- Mechanical engineering
- Robotics industry
- Plant engineering
- Renewable energy
- Railway applications / vehicle construction

Technical data

 Classification ETIM 5.0 Class-ID: EC002641 ETIM 5.0 Class-Description: Modular connector (industrial connector)	Contact resistance < 5 mOhm
 Rated voltage (V) 250 V	 Number of contacts 36
Rated impulse voltage 4 kV	 Termination methods Crimp termination: 0.14 - 2.5 mm ²
 Rated current (A) 10 A	 Material Polyamide, glass fibre-reinforced
 Degree of soiling 3	 Cycle of mechanical operation 500
	 Temperature range -40°C +125°C

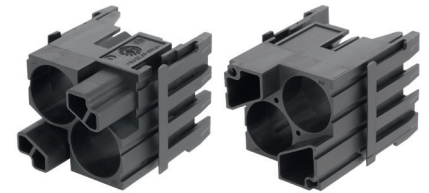
Article number	Article description	Contact type	Number of operating contacts	Slots	Pieces / PU
EPIC® MH 36					
44423266	EPIC® MHS 36 CM	male	36	2	10
44423267	EPIC® MHB 36 CM	female	36	2	10

Photographs are not to scale and do not represent detailed images of the respective products.



EPIC® MH Bus 2x(4) Modul

High flexibility by the use of any combination of inserts in one connector

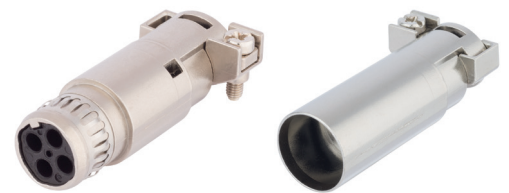


i Info

- Modular connector System, mateable with the market standard
- Shielded modul for data and signal transmission
- Available 2017

EPIC® MH Bus PIN 1x(4) contact holder

High flexibility by the use of any combination of inserts in one connector



i Info

- Modular connector System, mateable with the market standard
- Shielded modul for data and signal transmission
- Available 2017

Suitable housing

EPIC® MH Bus 2x(4) Modul

- EPIC® MH Modular System frame refer to main catalogue 2016 / 17
- EPIC® H-B housing use in high version

Suitable contacts:

EPIC® MH Bus 2x(4) Modul

- EPIC® H-D 1.6 machined contacts refer to main catalogue 2016 / 17
- EPIC® MH Bus PIN 1x(4) Page 33

Benefits

- Shielded modul for data and signal transmission
- EPIC® MH system is mateable with the market standard
- Crimp connection for permanent vibration proof contact
- The mix of different functions in one plug guarantees high flexibility
- Railway applications
 - Fire protection on railway vehicles: Test according EN 45545-2. Requirement sets R22 and R23. Hazard level HL1, HL2 and HL4

Application range

- Mechanical engineering
- Robotics industry
- Plant engineering
- Renewable energy
- Railway applications / vehicle construction

Technical data

Classification ETIM 5.0 Class-ID: EC002641 ETIM 5.0 Class-Description: Modular connector (industrial connector)	Number of contacts EPIC® MH Bus 2x(4) Modul 8 EPIC® MH Bus PIN 1x(4) contact holder 4
Rated voltage (V) 50	Termination methods Crimp termination: 0.14 - 2.5 mm ²
Rated impulse voltage 0,8 kV	Material PA
Rated current (A) 10	Cycle of mechanical operation 500
Degree of soiling 3	Temperature range -40 °C +125 °C

Article number	Article description	Contact type	Number of operating contacts	Slots	Pieces / PU
EPIC® MH Bus 2x(4) Modul					
44423228	EPIC® MHS Bus 2x(4) CM	male	2x (4 + shield)	2	10
44423230	EPIC® MHB Bus 2x(4) CM	female	2x (4 + shield)	2	10
EPIC® MH BUS PIN 1x(4) contact holder					
44423229	EPIC® MHS Bus PIN 1x(4) CM	male	4 + shield		10
44423231	EPIC® MHB Bus PIN 1x(4) CM	female	4 + shield		10

Photographs are not to scale and do not represent detailed images of the respective products.



EPIC® MH Potential set

High flexibility by the use of any combination of inserts in one connector



Info

- Equipotential spring for multi frame
- Available 2017

Benefits

- Equipotential spring for multi frame
- For use in EPIC® MH BUS modules

Application range

- Mechanical engineering
- Robotics industry
- Plant engineering
- Renewable energy
- Railway applications / vehicle construction

Technical data



Classification

ETIM 5.0 Class-ID: EC000796
 ETIM 5.0 Class-Description:
 Contact for industrial connectors

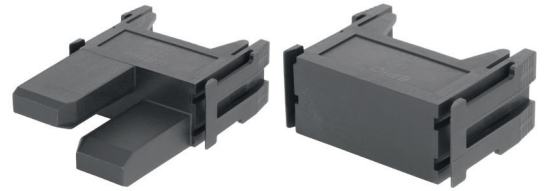
Article number	Article description	Pieces / PU
EPIC® MH Potential set		
44423265	EPIC® MH Potential Set	10

Photographs are not to scale and do not represent detailed images of the respective products.



EPIC® MH 0 blind modul

High flexibility by the use of any combination of inserts in one connector



Info

- Modular connector System, mateable with the market standard
- Dummy module as a placeholder for future expansion
- Available 2017

Suitable housing

- EPIC® MH Modular System frame refer to main catalogue 2016/17
- EPIC® H-B housing use in high version

Benefits

- Dummy module as a placeholder for future expansion
- EPIC® MH system is mateable with the market standard
- “Z” version with centering function for plug in technique
- The mix of different functions in one plug guarantees high flexibility
- Railway applications
 - Fire protection on railway vehicles: Test according EN 45545-2. Requirement sets R22 and R23. Hazard level HL1, HL2 and HL4

Application range

- Mechanical engineering
- Robotics industry
- Plant engineering
- Renewable energy
- Railway applications / vehicle construction

Technical data

<p>Classification ETIM 5.0 Class-ID: EC002641 ETIM 5.0 Class-Description: Modular connector (industrial connector)</p>	<p>Material Polyamide, glass fibre-reinforced</p>
<p>Number of contacts 0</p>	<p>Temperature range -40°C +125°C</p>

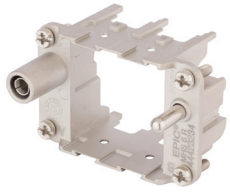
Article number	Article description	Slots	Pieces / PU
EPIC® MH 0 blind modul			
44423232	EPIC® MH 0	1	10
EPIC® MH 0 blind modul with centering			
44423233	EPIC® MH 0 Z	1	10

Photographs are not to scale and do not represent detailed images of the respective products.



EPIC® MH 6 multi frame

High flexibility by the use of any combination of inserts in one connector

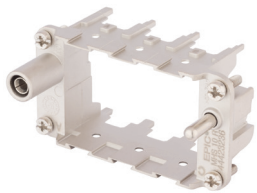


i Info

- Modular connector System, mateable with the market standard
- Frame system for modules
- Available 2017

EPIC® MH 10 multi frame

High flexibility by the use of any combination of inserts in one connector

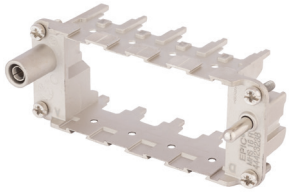


i Info

- Modular connector System, mateable with the market standard
- Frame system for modules

EPIC® MH 16 multi frame

High flexibility by the use of any combination of inserts in one connector

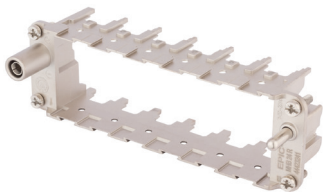


i Info

- Modular connector System, mateable with the market standard
- Frame system for modules
- Available 2017

EPIC® MH 24 multi frame

High flexibility by the use of any combination of inserts in one connector

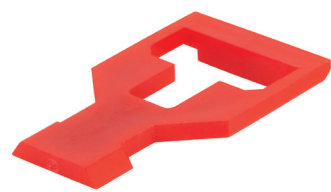


i Info

- Modular connector System, mateable with the market standard
- Frame system for modules
- Available 2017

EPIC® MH Clip

High flexibility by the use of any combination of inserts in one connector



i Info

- Modular connector System, mateable with the market standard
- Adapter clip for modules of competition
- Available 2017

ÖLFLEX®

UNITRONIC®

ETHERLINE®

HITRONIC®

EPIC®

SKINTOP®

SILVYN®

FLEXIMARK®

ACCESSORIES

Suitable housing

EPIC® MH 6 multi frame

- EPIC® ULTRA H-B 6 refer to main catalogue 2016/17
- EPIC® H-B 6 Housings refer to main catalogue 2016/17

EPIC® MH 10 multi frame

- EPIC® ULTRA H-B 10 refer to main catalogue 2016/17
- EPIC® H-B 10 Housings refer to main catalogue 2016/17

EPIC® MH 16 multi frame

- EPIC® ULTRA H-B 16 refer to main catalogue 2016/17
- EPIC® H-B 16 Housings refer to main catalogue 2016/17

EPIC® MH 24 multi frame

- EPIC® ULTRA H-B 24 refer to main catalogue 2016/17
- EPIC® H-B 24 Housings refer to main catalogue 2016/17

Benefits

EPIC® MH 6 multi frame

EPIC® MH 10 multi frame

EPIC® MH 16 multi frame

EPIC® MH 24 multi frame

- Multi frame for own and competition modules
- EPIC® MH system is mateable with the market standard
- The mix of different functions in one plug guarantees high flexibility
- Railway applications
 - Fire protection on railway vehicles: Test according EN 45545-2. Requirement sets R22 and R23. Hazard level HL1, HL2 and HL4
- PE connection from 1mm² up to 6mm² with end sleeve, 10mm² with adapter

EPIC® MH Clip

- EPIC® MH Clip for mounting of competition modules in EPIC® MH frame
- EPIC® MH system is mateable with the market standard
- The mix of different functions in one plug guarantees high flexibility
- Railway applications
 - Fire protection on railway vehicles: Test according EN 45545-2. Requirement sets R22 and R23. Hazard level HL1, HL2 and HL4

Application range

- Mechanical engineering
- Robotics industry
- Plant engineering
- Renewable energy
- Railway applications / vehicle construction

Technical data



Classification
ETIM 5.0 Class-ID: EC002641
ETIM 5.0 Class-Description:
Modular connector



Material
Zinc die-cast



Cycle of mechanical operation
500



Temperature range
-40 °C
+125 °C

Article number	Article description	Contact type	Slots	Pieces / PU
EPIC® MH 6 multi frame				
44423234	EPIC® MHS 6 R (A, B)	male	2	10
44423235	EPIC® MHB 6 R (a, b)	female	2	10
EPIC® MH 10 multi frame				
44423236	EPIC® MHS 10 R (A, B, C)	male	3	10
44423237	EPIC® MHB 10 R (a, b, c)	female	3	10
EPIC® MH 16 multi frame				
44423238	EPIC® MHS 16 R (A, B, C, D)	male	4	10
44423239	EPIC® MHB 16 R (a, b, c, d)	female	4	10
EPIC® MH 24 multi frame				
44423240	EPIC® MHS 24 R (A, B, C, D, E, F)	male	6	10
44423241	EPIC® MHB 24 R (a, b, c, d, e, f)	female	6	10
EPIC® MH Clip				
44423264	EPIC® MH Clip			20

Photographs are not to scale and do not represent detailed images of the respective products.

EPIC® MH 8.0mm Contacts

High flexibility by the use of any combination of inserts in one connector



Info

- Modular connector System, mateable with the market standard
- Available 2017

Application range

- Mechanical engineering
- Crimp connection for permanent vibration proof contact
- EPIC® MH system is mateable with the market standard

Suitable tools

- For use in battery hydraulic crimping tool Klauke type EK 120/42-L

Article number	Article description	Contact type	Connection cross section (mm ²)	Pieces / PU
EPIC® MH D=8.0 contacts				
44423242	EPIC® MH SCEM AG 10sqmm D=8.0	male	10	10
44423246	EPIC® MH BCEM AG 10sqmm D=8.0	female	10	10
44423243	EPIC® MH SCEM AG 16sqmm D=8.0	male	16	10
44423247	EPIC® MH BCEM AG 16sqmm D=8.0	female	16	10
44423244	EPIC® MH SCEM AG 25sqmm D=8.0	male	25	10
44423248	EPIC® MH BCEM AG 25sqmm D=8.0	female	25	10
44423245	EPIC® MH SCEM AG 35sqmm D=8.0	male	35	10
44423249	EPIC® MH BCEM AG 35sqmm D=8.0	female	35	10

Photographs are not to scale and do not represent detailed images of the respective products.



EPIC® MH 4.0mm Contacts

High flexibility by the use of any combination of inserts in one connector



Info

- Modular connector System, mateable with the market standard
- Available 2017

Application range

- Mechanical engineering
- Robotics industry
- Plant engineering
- Renewable energy
- Railway applications / vehicle construction

Technical data

Classification
 ETIM 5.0 Class-ID: EC000796
 ETIM 5.0 Class-Description:
 Contact for industrial connectors

Contact resistance
 < 5 mOhm

Termination methods
 Crimp termination: 1.5 mm² - 10 mm²

Stripping length (mm)
 10

Cycle of mechanical operation
 500

Suitable tools

- EPIC® MH contact removal tool 4.0mm refer to refer to main catalogue 2016/17

Article number	Article description	Contact type	Connection cross section (mm ²)	Pieces / PU
EPIC® MH 4.0mm Contacts				
44423250	EPIC® MH SCEM AG 1.5sqmm D=4.0	male	1.5	10
44423255	EPIC® MH BCEM AG 1.5sqmm D=4.0	female	1.5	10
44423251	EPIC® MH SCEM AG 2.5sqmm D=4.0	male	2.5	10
44423256	EPIC® MH BCEM AG 2.5sqmm D=4.0	female	2.5	10
44423252	EPIC® MH SCEM AG 4sqmm D=4.0	male	4	10
44423257	EPIC® MH BCEM AG 4sqmm D=4.0	female	4	10
44423253	EPIC® MH SCEM AG 6sqmm D=4.0	male	6	10
44423258	EPIC® MH BCEM AG 6sqmm D=4.0	female	6	10
44423254	EPIC® MH SCEM AG 10sqmm D=4.0	male	10	10
44423259	EPIC® MH BCEM AG 10sqmm D=4.0	female	10	10

Photographs are not to scale and do not represent detailed images of the respective products.

EPIC® TOOL DIE 8.0mm

High flexibility by the use of any combination of inserts in one connector



Info

- Crimp dies for electro hydraulic crimp tool
- Available 2017

EPIC® MH contact removal tool 8.0mm

High flexibility by the use of any combination of inserts in one connector



Info

- Tool for removing the 8.0mm contacts from the EPIC® MH modules
- Available 2017

Suitable contacts:

EPIC® TOOL DIE 8.0mm

- EPIC® MH 8.0mm Contacts
- Page 38

Benefits

EPIC® MH contact removal tool 8.0mm

- Tool for removing the 8.0mm contacts from the EPIC® MH modules

Suitable tools

EPIC® TOOL DIE 8.0mm

- For use in battery hydraulic crimping tool Klauke type EK 120/42-L

Article number	Article description	Connection cross section (mm ²)	Connection cross section (mm ²)	Pieces / PU
Crimping dies				
44423270	EPIC® TOOL DIE D=8.0 10sqmm	10	10.00	1
44423271	EPIC® TOOL DIE D=8.0 10sqmm	16	16.00	1
44423272	EPIC® TOOL DIE D=8.0 25sqmm	25	25.00	1
44423273	EPIC® TOOL DIE D=8.0 35sqmm	35	35.00	1
EPIC® MH contact removal tool 8.0mm				
44423269	EPIC® MH Contact Removal Tool D=8.0			1

Photographs are not to scale and do not represent detailed images of the respective products.



EPIC® ULTRA H-A 3 TG

Housing EPIC® ULTRA: for higher functional reliability



i Info

- EMC protection
- Corrosion-resistant
- Protection rating UL50E tested

EPIC® ULTRA H-A 3 TS

Housing EPIC® ULTRA: for higher functional reliability



i Info

- EMC protection
- Corrosion-resistant
- Protection rating UL50E tested

EPIC® ULTRA H-A 3 TBF

Housing EPIC® ULTRA: for higher functional reliability



i Info

- EMC protection
- Corrosion-resistant
- Protection rating UL50E tested

Benefits

- Optimum, low-resistance 360° screening
- All-purpose due to high corrosion resistance and high environmental protection.
- Space-saving due to compact dimensions
- High mechanical and chemical resistance

Application range

- In EMC-sensitive environments
- For fixed and flexible applications (e.g. machinery building, wind turbines)
- Construction machinery
- Electric motor manufacturing

Product features

- Pluggable with standard housings
- Resistance to cyclic salt spray is tested according to IEC 68-2-52, severity level 2
- Salt spray testing according to DIN EN ISO 9227, method NSS, period of test 480 hours
- Corrosion-resistant according to DIN EN 6988
- Delivery including stainless steel screw for the inserts

Suitable inserts

- Refer to Selection Table A10 to select the required inserts and housings

Technical data

Classification
 ETIM 5.0 Class-ID: EC000437
 ETIM 5.0 Class-Description:
 Housing for industrial connectors

Material
 Housing: nickel-plated zinc diecasting
 Lever: stainless steel
 Sealing: NBR

Protection rating
 IP 65
 NEMA 250, UL50E: 12, 4, 4X (latched)

Temperature range
 -40°C to +100°C,
 short-term up to +125°C

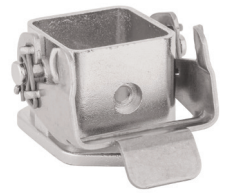
Article number	Article description	M	Pieces / PU
EPIC® ULTRA H-A 3 TG			
10423300	ULTRA H-A 3 TG	20	10
EPIC® ULTRA H-A 3 TS			
10423201	ULTRA H-A 3 TS	20	10
EPIC® ULTRA H-A 3 TBF			
10423204	ULTRA H-A 3 TBF	20	10

Photographs are not to scale and do not represent detailed images of the respective products.



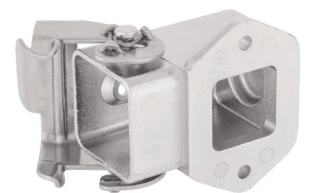
EPIC® ULTRA H-A 3 AG

Housing EPIC® ULTRA: for higher functional reliability



EPIC® ULTRA H-A 3 AGS

Housing EPIC® ULTRA: for higher functional reliability



EPIC® ULTRA H-A 3 AGSV

Housing EPIC® ULTRA: for higher functional reliability



i Info

- EMC protection
- Corrosion-resistant
- Protection rating UL50E tested

i Info

- EMC protection
- Corrosion-resistant
- Protection rating UL50E tested

i Info

- EMC protection
- Corrosion-resistant
- Protection rating UL50E tested

Benefits

- Optimum, low-resistance 360° screening
- All-purpose due to high corrosion resistance and high environmental protection.
- Space-saving due to compact dimensions
- High mechanical and chemical resistance

Application range

- In EMC-sensitive environments
- For fixed and flexible applications (e.g. machinery building, wind turbines)
- Construction machinery
- Electric motor manufacturing

Product features

- Pluggable with standard housings
- Resistance to cyclic salt spray is tested according to IEC 68-2-52, severity level 2
- Salt spray testing according to DIN EN ISO 9227, method NSS, period of test 480 hours
- Corrosion-resistant according to DIN EN 6988
- Delivery including stainless steel screw for the inserts

Suitable inserts

- Refer to Selection Table A10 to select the required inserts and housings

Technical data

Classification
 ETIM 5.0 Class-ID: EC000437
 ETIM 5.0 Class-Description: Housing for industrial connectors

Material
 Housing: nickel-plated zinc diecasting
 Lever: stainless steel
 Sealing: NBR

Protection rating
 IP 65
 NEMA 250, UL50E: 12, 4, 4X (latched)

Temperature range
 -40°C to +100°C,
 short-term up to +125°C

Article number	Article description	M	Pieces / PU
EPIC® ULTRA H-A 3 AG			
10423200	ULTRA H-A 3 AG		10
EPIC® ULTRA H-A 3 AGS			
10423202	ULTRA H-A 3 AGS		10
EPIC® ULTRA H-A 3 AGSV			
10423203	ULTRA H-A 3 AGSV	20	10

Photographs are not to scale and do not represent detailed images of the respective products.



EPIC® Protective cover H-B



Product features

- Protective cover for EPIC® ULTRA housings
- Without retaining cord
- Protective cover made of FDA approved material
- Protective cover for hoods with stainless steel levers and bolts

Technical data



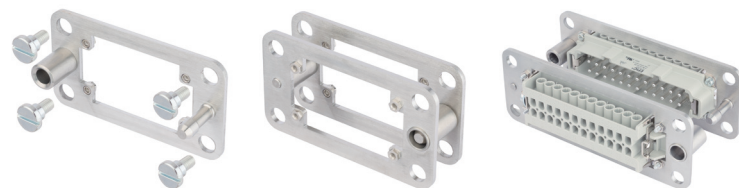
Classification

ETIM 5.0 Class-ID: EC002314
ETIM 5.0 Class-Description:
Cap for industrial connectors

Article number	Version	Bolts	Clamp	Pieces / PU
ULTRA Protective Cover for panel and surface mount bases				
70250250	for housing ULTRA H-B 6	2		1
70250251	for housing ULTRA H-B 10	4		1
70250252	for housing ULTRA H-B 16	4		1
70250253	for housing ULTRA H-B 24	4		1
ULTRA Protective Cover for hoods				
70250254	for housing ULTRA H-B 6		Single lever	1
70250255	for housing ULTRA H-B 10		Double Lever	1
70250256	for housing ULTRA H-B 16		Double Lever	1
70250257	for housing ULTRA H-B 24		Double Lever	1

Photographs are not to scale and do not represent detailed images of the respective products.

EPIC® Docking frame



Info

- Mounting system for control cabinets
- For float-mounting fixing of the inserts

Application range

- Control cabinet manufacturing
- Wind power plants

Product features

- Scope of delivery for one part:
1 frame + 4 screws
- Special screws adapted to frame
- Pull-In range in x and y axis: + - 1,5mm

Technical data



Classification

ETIM 5.0 Class-ID: EC002312
ETIM 5.0 Class-Description:
Contact insert holder for industrial connectors



Material

Docking frame: stainless steel
Screws: steel zinc plated



Cycle of mechanical operation

500

Article number	Article description	Version	Pieces / PU
EPIC® Docking frame			
44429440	H-B 6 DF	4 fixing screws each included	2
44429441	H-B 10 DF	4 fixing screws each included	2
44429442	H-B 16 DF	4 fixing screws each included	2
44429443	H-B 24 DF	4 fixing screws each included	2

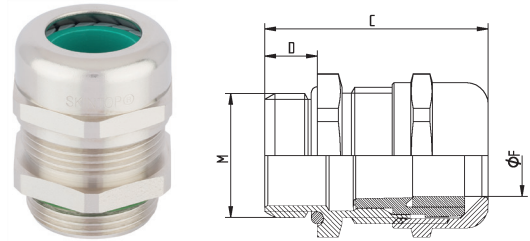
Photographs are not to scale and do not represent detailed images of the respective products.



SKINTOP® MS-HF-M

i Info

- Cable gland for railway applications
- Hazard Level: HL 3



Benefits

- Halogen-free and flame-retardant
- Optimum strain relief
- Wide, variable clamping ranges
- Maximum reliability

Application range

- Underground railways and trains
- In areas where mechanical and chemical stability are critical
- When the protection of people and property is a priority.

Norm references / Approvals

- DIN EN 45545-2
- DIN EN 45545-3: 2013-08
- DIN EN 1363-1: 2012-10
- DIN EN 13501-2: Klassifizierung E30

Product Make-up

- Metric connection thread acc. to DIN EN 60423
- Basis for technical information DIN IEC 62444

Note

- Refer to SKINTOP® metric accessories for suitable accessories

Technical data

ETIM **Classification**
 ETIM 5.0 Class-ID: EC000441
 ETIM 5.0 Class-Description: Cable screw gland

Caution
 Refer to Appendix T21 for the installation dimensions and torques

Material
 Body: nickel-plated brass
 Cap nut: nickel-plated brass
 Insert: polyamide, halogenfree acc. to UL 94 V 0
 Sealing ring: Special elastomere
 O-ring: Special elastomere

IP **Protection rating**
 IP 68 - 5 bar

Temperature range
 dynamic -25°C up to + 100°C
 Fixed: -40°C to +100°C

Article number	Article designation / size	Clamping range ØF (mm)	SW wrench size mm	Overall length, C (mm)	Thread length, D (mm)	Pieces / PU
SKINTOP® MS-HF-M						
53112570	M 12 x 1,5	3,5-7	16	26,5	6,5	100
53112571	M 16 x 1,5	4,5-10	20	33,0	7	100
53112572	M 20 x 1,5	7-13	24	37,0	8	50
53112573	M 25 x 1,5	9-17	29	38,5	8	25
53112574	M 32 x 1,5	11-21	36	45,5	9	25
53112575	M 40 x 1,5	19-28	45	48,0	9	10
53112576	M 50 x 1,5	27-35	54	55,5	10	5
53112577	M 63 x 1,5	34-45	67	67,0	15	5

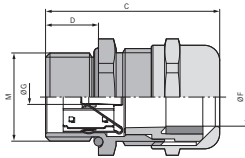
Photographs are not to scale and do not represent detailed images of the respective products.

Accessories

- SKINDICHT® SM-M refer to main catalogue 2016/17
- SKINMATIC® MH Set refer to main catalogue 2016/17



SKINTOP® MS-HF-M SC



Benefits

- Halogen-free and flame-retardant
- Suitable for cables with and without inner sheath
- Low-resistance screen contact, optimum EMC protection
- Highly conductive, flexible EMC contact for clamping various screen diameters
- Few operation steps, easy to assemble

Application range

- Underground railways and trains
- For EMC-compliant earthing of the copper braiding, or for cables with copper shaft sheath
- Industrial machinery and plant engineering
- Measurement and control technology
- Automation technology

Norm references / Approvals

- DIN EN 45545-2
- DIN EN 45545-3: 2013-08
- DIN EN 1363-1: 2012-10
- DIN EN 13501-2: Klassifizierung E30

Product Make-up

- Metric connection thread acc. to DIN EN 60423
- Basis for technical information DIN IEC 62444

Note

- SKINDICHT® SM-PE-M counter nut should be used to ensure optimum contact with painted, anodised or powder-coated housings
- Refer to SKINTOP® metric accessories for suitable accessories



Info

- Cable gland for railway applications
- Hazard Level: HL 3

Technical data



Classification

ETIM 5.0 Class-ID: EC000441
ETIM 5.0 Class-Description:
Cable screw gland



Caution

Refer to Appendix T21 for the installation dimensions and torques



Material

Body: nickel plated brass
Cap nut: nickel plated brass
Insert: halogen-free polyamid acc. to UL 94 V0
Sealing ring: special elastomer
O-ring: special elastomer



Protection rating

IP 68 - 5 bar



Temperature range

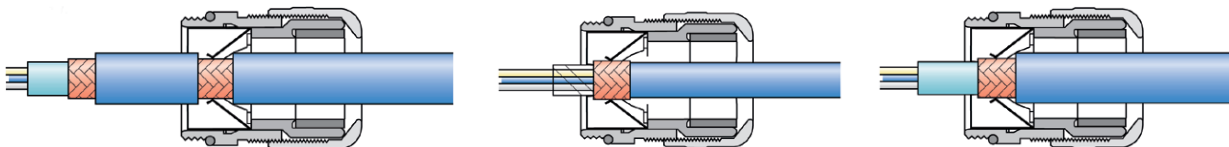
dynamic -25°C up to + 100°C
static -40°C up to +100°C

Article number	Article designation / size	Clamping range ØF (mm)	Minimum Ø above braiding (mm)	SW wrench size mm	Overall length, C (mm)	Thread length, D (mm)	Pieces / PU
SKINTOP® MS-HF-M SC							
53112530	M 12 x 1,5	3,5-7	1	16	26,5	6,5	50
53112531	M 16 x 1,5	4,5-10	4	20	33,0	7	50
53112532	M 20 x 1,5	7-13	5	24	37,0	8,5	25
53112533	M 25 x 1,5	9-17	7,5	29	38,5	8	25
53112534	M 32 x 1,5	11-21	9	36	45,5	9	25
53112535	M 40 x 1,5	19-28	15	45	48,0	9	10
53112536	M 50 x 1,5	27-35	21	50	55,5	10	5

Photographs are not to scale and do not represent detailed images of the respective products.

Accessories

- SKINDICHT® SM-PE-M refer to main catalogue 2016/17





SKINTOP® MS-HF-M BRUSH



Info

- Cable gland for railway applications
- Hazard Level: HL 3

Benefits

- Halogen-free and flame-retardant
- Optimum, low-resistance 360° screen contact
- Faster than any other comparable system
- Maximum reliability
- Maximum assembly freedom during adjustment

Application range

- Underground railways and trains
- Automation systems
- High-power drives
- Frequency converters
- Conveyor and transport systems

Norm references / Approvals

- DIN EN 45545-2
- DIN EN 45545-3: 2013-08
- DIN EN 1363-1: 2012-10
- DIN EN 13501-2: Klassifizierung E30

Product Make-up

- Metric connection thread acc. to DIN EN 60423
- Basis for technical information DIN IEC 62444

Note

- SKINDICHT® SM-PE-M counter nut should be used to ensure optimum contact with painted, anodised or powder-coated housings
- Refer to SKINTOP® metric accessories for suitable accessories

Technical data



Classification

ETIM 5.0 Class-ID: EC000441
ETIM 5.0 Class-Description:
Cable screw gland



Caution

Refer to Appendix T21 for the installation dimensions and torques



Material

Body: nickel-plated brass
Cap nut: nickel-plated brass
Insert: polyamide, halogen-free acc. to UL 94 V0
EMC brush: brass wire
Sealing ring: special elastomer
O-ring: special elastomer



Protection rating

IP 68 - 5 bar



Temperature range

dynamic -25°C up to + 100°C
Fixed: -40°C to +100°C

Article number	Article designation / size	Clamping range ØF (mm)	Minimum Ø above braiding (mm)	SW wrench size mm	Overall length, C (mm)	Thread length, D (mm)	Pieces / PU
SKINTOP® MS-HF-M BRUSH							
53112543	M 25 x 1,5	9-17	6	29	36.0	8	10
53112544	M 32 x 1,5	11-21	8	36	42.2	9	5
53112545	M 40 x 1,5	19-28	10	45	49.5	9	5
53112546	M 50 x 1,5	27-35	14	54	52.0	10	5
53112547	M 63 x 1,5	34-45	20	67	61.3	15	1

Photographs are not to scale and do not represent detailed images of the respective products.

Accessories

- SKINDICHT® SM-PE-M refer to main catalogue 2016/17



SKINTOP® MS-HF-M GRIP



Info

- Cable gland for railway applications
- Brass cable gland with with centred strain relief and kink protection
- Hazard Level: HL 3

Benefits

- Halogen-free and flame-retardant
- Reliable bending and anti-kink protection
- High strain relief
- For high mechanical stress

Application range

- Saddle clamp strain relief gland for harsh application conditions.
- Portable equipment
- Machines and systems on building sites
- Crane and conveying machinery
- Plant engineering

Norm references / Approvals

- DIN EN 45545-2
- DIN EN 45545-3: 2013-08
- DIN EN 1363-1: 2012-10
- DIN EN 13501-2: Klassifizierung E30

Product Make-up

- Metric connection thread acc. to DIN EN 60423
- Basis for technical information DIN IEC 62444

Note

- Refer to SKINTOP® metric accessories for suitable accessories

Technical data

Classification
 ETIM 5.0 Class-ID: EC000441
 ETIM 5.0 Class-Description: Cable screw gland

Caution
 Refer to the instruction leaflet for the installation dimensions and torques

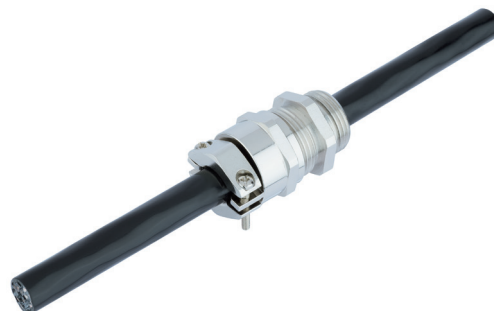
Material
 Body: nickel plated brass
 Cap nut: nickel plated brass
 Insert: halogen-free polyamid acc. to UL 94 V0
 Sealing ring: special elastomer
 O-ring: special elastomer

Protection rating
 IP 68 - 5 bar

Temperature range
 dynamic -25°C up to + 100°C
 static -40°C up to +100°C

Article number	Article designation / size	Clamping range ØF (mm)	SW wrench size mm	Overall length, C (mm)	Thread length, D (mm)	Pieces / PU
SKINTOP® MS-HF-M GRIP						
53112551	M 16 x 1,5	4,5-10	20	41.0	7	25
53112552	M 20 x 1,5	7-13	24	46.0	8.5	25
53112553	M 25 x 1,5	9-17	29	48.5	8	25
53112554	M 32 x 1,5	11-21	36	56.6	9	25

Photographs are not to scale and do not represent detailed images of the respective products.





SKINTOP® MULTI



Info

- Compact multi cable bushing system with innovative gel technology



Benefits

- Large clamping range of 4 mm and AS-I BUS entry system by elastic gel technology with innovative membrane technology
- Easy installation, high packing density
- Optimum strain relief at the entire cable bundle
- Error reduction through clear assignment of cable to be installed by a clear marker of implementing points
- Not used holes remain securely sealed

Application range

- Used in areas where a lot of cables and wires need to be inserted into housings with minimum space requirements
- For not harnessed cables and media hoses
- Apparatus and switch cabinet construction
- Automation technology

Product features

- One sealing to the cable & housing (captive)
- Halogen-free
- UV-, Ozon and oil resistant
- The adhesive gel provides a very easy positioning at the enclosure during the assembling

Product Make-up

- For cut-outs for 24-pin industrial connectors (36 x 112 mm)

Included

- SKINTOP® MULTI including mounting material

Technical data

	Classification ETIM 5.0 Class-ID: EC000240 ETIM 5.0 Class-Description: Cable entry system
	Certifications UL pending Fire behaviour according to UL94 V-2
	Note Individual hole configuration on request
	Material Frame: Polycarbonat Sealing: Gel
	Protection rating IP 68
	Temperature range -30°C to +100°C

Article number	Article designation / size	Max. number of executions	Number of cables x clamping range	Pieces / PU
SKINTOP® MULTI				
52220065	SKINTOP® MULTI Version 1	22	6 x 8-12 mm, 16 x 3-7 mm	1
52220073	SKINTOP® MULTI Version 2	21	5 x 2-6 mm, 8 x 4-8 mm, 3 x 5-9 mm, 2 x 8-12 mm, 1 x 12-16 mm, 2 x AS-I BUS oder 2 x 2-4 mm	1

Photographs are not to scale and do not represent detailed images of the respective products.

Similar products

- SKINTOP® CUBE MULTI refer to main catalogue 2016/17
- SKINTOP® CUBE refer to main catalogue 2016/17

Accessories

- Kraftform Kompakt® 10





FIPLOCK® PA6

Flexible, corrugated cable conduit system in closed and divisible version



Info

- Hazard Level: HL 3

Technical data

Classification
ETIM 5.0 Class-ID: EC001175
ETIM 5.0 Class-Description: Corrugated plastic hose

Certifications
IEC EN 61386-23
EN 45545-2 HL3

Colour delivered
Grey (RAL 7011)
Black (RAL 9005), UV-resistant

Material
PA 6
Silicone-free
Halogen-free
Fire behaviour according to UL 94V-0

Temperature range
-45°C to +120°C

Benefits

- The flexible conduit design enables small bending radii and is ideally suited for space-saving installations where space is limited in dry and damp interiors, as well as for outdoor applications
- Robust against mechanical impacts
- Flexible
- Dimensionally stable

Product features

- Low smoke density
- Self-extinguishing, no dripping
- Halogen-free
- High resistance to oil, petrol, acids and other chemicals
- Good weather and UV-resistance

Application range

- For use in railway vehicles and buses, for fixed installations and applications where limited movement may occur
- Railway technology
- Public transport equipment

Article number	Nominal size	ID x OD mm	Bending radius (mm)	Suitable for FIPLOCK® M	Colour	PU ring (m)
Standard weight version (closed)						
61803908	7	6.2 x 10.0	15	12 x 1,5	black	50
61803909	10	9.6 x 12.8	20	12 x 1,5/16 x 1,5/20 x 1,5	black	50
61803910	12	12.0 x 15.7	30	16 x 1,5/20 x 1,5	black	50
61803911	17	16.1 x 21.1	35	20 x 1,5/25 x 1,5	black	50
61803912	23	22.0 x 28.4	40	25 x 1,5/32 x 1,5	black	50
61803913	29	28.3 x 34.5	50	32 x 1,5/40 x 1,5	black	50
61803914	36	35.8 x 42.2	55	40 x 1,5/50 x 1,5	black	25
61803915	48	46.7 x 53.8	65	50 x 1,5/63 x 1,5	black	25
61803916	56	56.3 x 67.2	100		black	25
61803917	70	67.2 x 79.6	130		black	25
61803918	95	91.3 x 106.0	170		black	10
61803919	125	126.5 x 146.5	380		black	10
61803920	7	6.2 x 10.0	15	12 x 1,5	grey	50
61803921	10	9.6 x 12.8	20	12 x 1,5/16 x 1,5/20 x 1,5	grey	50
61803922	12	12.0 x 15.7	30	16 x 1,5/20 x 1,5	grey	50
61803923	17	16.1 x 21.1	35	20 x 1,5/25 x 1,5	grey	50
61803924	23	22.0 x 28.4	40	25 x 1,5/32 x 1,5	grey	50
61803925	29	28.3 x 34.5	50	32 x 1,5/40 x 1,5	grey	50
61803926	36	35.8 x 42.2	55	40 x 1,5/50 x 1,5	grey	25
61803927	48	46.7 x 53.8	65	50 x 1,5/63 x 1,5	grey	25
61803928	56	56.3 x 67.2	100		grey	25
61803929	70	67.2 x 79.6	130		grey	25
61803930	95	91.3 x 106.0	170		grey	10
61803931	125	126.5 x 146.5	380		grey	10
Heavy duty version (closed)						
61803932	17	16.1 x 21.1	35	20 x 1,5/25 x 1,5	black	50
61803933	23	22.0 x 28.5	45	25 x 1,5/32 x 1,5	black	50
61803934	29	28.3 x 34.7	55	32 x 1,5/40 x 1,5	black	50
61803935	36	35.8 x 42.3	60	40 x 1,5/50 x 1,5	black	25
61803936	48	46.7 x 54.2	70	50 x 1,5/63 x 1,5	black	25
61803937	17	16.1 x 21.1	35	20 x 1,5/25 x 1,5	grey	50
61803938	23	22.0 x 28.5	45	25 x 1,5/32 x 1,5	grey	50
61803939	29	28.3 x 34.7	55	32 x 1,5/40 x 1,5	grey	50
61803940	36	35.8 x 42.3	60	40 x 1,5/50 x 1,5	grey	25
61803941	48	46.7 x 54.2	70	50 x 1,5/63 x 1,5	grey	25
Divisible version						
61803942	7	6.3 x 10.0	25		black	50
61803943	10	8.8 x 13.5	30		black	50
61803944	11	11.0 x 16.1	30		black	50
61803945	14	13.2 x 18.7	35		black	50
61803946	16	16.0 x 21.5	40		black	50
61803947	20	20.2 x 25.7	50		black	50
61803948	23	23.9 x 31.3	60		black	50
61803949	29	27.3 x 35.5	110		black	25
61803950	37	32.5 x 43.2	135		black	25
61803951	45	43.1 x 54.2	140		black	25

Photographs are not to scale and do not represent detailed images of the respective products.

Similar products

- FIPLOCK® PA12 refer to page 49

Accessories

- FIPLOCK® M refer to page 50
- FIPLOCK® PG refer to main catalogue 2016/17
- FIPLOCK® NPT refer to main catalogue 2016/17
- SILVYN® Conduit scissor refer to main catalogue 2016/17

ÖLFLEX®
 UNITRONIC®
 ETHERLINE®
 HITRONIC®
 EPIC®
 SKINTOP®
 SILVYN®
 FLEXIMARK®
 ACCESSORIES



FIPLOCK® PA12

Flexible, corrugated cable conduit system in closed and divisible version

Info

- Hazard Level: HL 3



Benefits

- The flexible conduit design enables small bending radii and is ideally suited for space-saving installations where space is limited in dry and damp interiors, as well as for outdoor applications
- Robust against mechanical impacts
- Highly flexible and high fatigue life
- Dimensionally stable

Application range

- For use in railway vehicles and buses, for fixed installations and applications where continuous movement may occur
- Railway technology
- Public transport equipment
- For indoor and outdoor use
- Carriage roof, Jumper connections, Couplings

Product features

- Low smoke density
- Self-extinguishing, no dripping
- Halogen-free
- High resistance to oil, petrol, acids and other chemicals
- Excellent weather and UV-resistance

Technical data

Classification
ETIM 5.0 Class-ID: EC001175
ETIM 5.0 Class-Description: Corrugated plastic hose

Certifications
IEC EN 61386-23
EN 45545-2 HL3

Colour delivered
Black (RAL 9005), UV-resistant

Material
PA 12
Silicone-free
Halogen-free
Fire behaviour according to UL 94V-0

Temperature range
-45°C to +105°C

Article number	Nominal size	ID x OD mm	Bending radius (mm)	Suitable for FIPLOCK® M	Colour	PU ring (m)
Standard weight version (closed)						
61803952	7	6.2 x 10.0	15	12 x 1,5	black	50
61803953	10	9.6 x 12.8	20	12 x 1,5/ 16 x 1,5/20 x 1,5	black	50
61803954	12	12.0 x 15.7	25	16 x 1,5/20 x 1,5	black	50
61803955	17	16.1 x 21.1	30	20 x 1,5/25 x 1,5	black	50
61803956	23	22.0 x 28.5	40	25 x 1,5/32 x 1,5	black	50
61803957	29	28.3 x 34.7	50	32 x 1,5/40 x 1,5	black	50
61803958	36	36.6 x 42.3	55	40 x 1,5/50 x 1,5	black	25
61803959	48	47.0 x 54.4	65	50 x 1,5/63 x 1,5	black	25
61803960	56	56.3 x 67.2	100		black	25
61803961	70	67.2 x 79.6	135		black	25
61803962	95	91.3 x 106.0	150		black	10
61803963	125	126.5 x 146.5	320		black	10
61803964	170	172.0 x 193.0	440		black	10
Heavy duty version (closed)						
61803965	7	6.0 x 10.0	15	12 x 1,5	black	50
61803966	10	9.2 x 12.8	20	12 x 1,5/ 16 x 1,5/20 x 1,5	black	50
61803967	12	11.8 x 15.7	25	16 x 1,5/20 x 1,5	black	50
61803968	17	16.1 x 21.1	35	20 x 1,5/25 x 1,5	black	50
61803969	23	22.0 x 28.5	40	25 x 1,5/32 x 1,5	black	50
61803970	29	28.3 x 34.7	50	32 x 1,5/40 x 1,5	black	50
61803971	36	35.8 x 42.3	60	40 x 1,5/50 x 1,5	black	25
61803972	48	46.7 x 54.2	70	50 x 1,5/63 x 1,5	black	25
Divisible version						
61803973	7	6.3 x 10.0	20		black	50
61803974	10	8.8 x 13.5	25		black	50
61803975	11	11.0 x 16.1	25		black	50
61803976	14	13.2 x 18.7	30		black	50
61803977	16	16.0 x 21.5	35		black	50
61803978	20	20.2 x 25.7	45		black	50
61803979	23	23.9 x 31.3	55		black	50
61803980	29	27.3 x 35.5	105		black	25
61803981	37	32.5 x 43.2	130		black	25
61803982	45	43.1 x 54.2	135		black	25
61803983	70	67.0 x 79.8	175		black	10
61803984	100	87.5 x 102.5	195		black	10

Photographs are not to scale and do not represent detailed images of the respective products.

Accessories

- FIPLOCK® M refer to page 50
- FIPLOCK® PG refer to main catalogue 2016/17
- FIPLOCK® NPT refer to main catalogue 2016/17
- SILVYN® Conduit scissor refer to main catalogue 2016/17



FIPLOCK® M

Conduit fitting system for highest requirements, suitable for FIPLOCK® PA6 / PA12



Benefits

- Very high tensile strength due to all around tooth system
- Ensures mounting safety due to integrated coding system
- Excellent IP rating
- Cost-saving due to quick and easy installation

Application range

- Suitable for FIPLOCK® PA6 / PA12
- Demand of increased liquid tightness
- For indoor and outdoor use

Product features

- All around locking mechanism due to 360° tooth system
- Locking mechanism with integrated coding system
- Extended sealing range across multiple corrugated conduit waves

Note

- Fitting is not suitable for use with divisible version of FIPLOCK® conduit

Info

- New conduit fitting system with innovative locking system

Technical data

	Classification ETIM 5.0 Class-ID: EC001176 ETIM 5.0 Class-Description: Screw connection for corrugated plastic hose
	Certifications IEC EN 61386-23 EN 45545-2 HL3
	On request PG or NPT connection thread With 90° elbow
	Colour delivered Grey (RAL 7005) Black (RAL 9005), UV-resistant
	Material PA 6 Halogen-free Fire behaviour according to UL 94V-0
	Protection rating IP66/IP67/IP68/IP69
	Temperature range -45°C to +120°C

Article number	Metric size	SW wrench size mm	Clear opening (mm)	Suitable for FIPLOCK® PA6 / PA12	Colour	Pieces / PU
FIPLOCK® M black						
61804211	12 x 1.5	17	7.2	7	black	10
61804212	12 x 1.5	20	10	10	black	10
61804213	16 x 1.5	20	10	10	black	10
61804214	16 x 1.5	22	9	12	black	10
61804215	20 x 1.5	20	10	10	black	10
61804216	20 x 1.5	22	13	12	black	10
61804217	20 x 1.5	27	13	17	black	10
61804218	25 x 1.5	27	17.2	17	black	10
61804219	25 x 1.5	36	18	23	black	10
61804220	32 x 1.5	36	23	23	black	10
61804221	32 x 1.5	41	25	29	black	10
61804222	40 x 1.5	41	29	29	black	10
61804223	40 x 1.5	52	31.9	36	black	10
61804224	50 x 1.5	52	36	36	black	10
61804225	50 x 1.5	65	41.9	48	black	10
61804226	63 x 1.5	65	50.5	48	black	10
FIPLOCK® M grey						
61804227	12 x 1.5	17	7.2	7	grey	10
61804228	12 x 1.5	20	10	10	grey	10
61804229	16 x 1.5	20	10	10	grey	10
61804230	16 x 1.5	22	9	12	grey	10
61804231	20 x 1.5	20	10	10	grey	10
61804232	20 x 1.5	22	13	12	grey	10
61804233	20 x 1.5	27	13	17	grey	10
61804234	25 x 1.5	27	17.2	17	grey	10
61804235	25 x 1.5	36	18	23	grey	10
61804236	32 x 1.5	36	23	23	grey	10
61804237	32 x 1.5	41	25	29	grey	10
61804238	40 x 1.5	41	29	29	grey	10
61804239	40 x 1.5	52	31.9	36	grey	10
61804240	50 x 1.5	52	36	36	grey	10
61804241	50 x 1.5	65	41.9	48	grey	10
61804242	63 x 1.5	65	50.5	48	grey	10

Photographs are not to scale and do not represent detailed images of the respective products.



ÖLFLEX®
 UNITRONIC®
 ETHERLINE®
 HITRONIC®
 EPIC®
 SKINTOP®
 SILVYN®
 FLEXIMARK®
 ACCESSORIES



SILVYN® HFX-V0 / SILVYN® FCE-V0

Interlocked metal conduit with thick-walled Polyurethane jacket

Info

- Hazard Level: HL 2



SILVYN® HFX-V0

SILVYN® FCE-V0

Benefits

- The flexible conduit design enables small bending radii and is ideally suited for space-saving installations where space is limited in dry and damp interiors, as well as for outdoor applications
- High resistance to oil, petrol, acids and greases
- Liquidtight

Application range

- For use in railway vehicles and buses, for fixed installations and applications where limited movement may occur
- Also applicable within oily environments and areas with increased ambient temperature

Product features

- UV-resistant
- Halogen-free and flame-retardant
- High mechanical and chemical resistance

Product Make-up

- Helicly-wound metal protective conduit with interlocked profile
- PUR outer sheath

Technical data

Classification
 ETIM 5.0 Class-ID: EC001179
 ETIM 5.0 Class-Description:
 Protective metallic hose

Certifications
 IEC EN 61386-23
 EN 45545-2 HL2

Colour delivered
 Black (RAL 9005), UV-resistant

Material
 Metal with PUR sheath
 Fire behaviour according to UL 94V-0

Temperature range
 -50 °C to +105 °C
 Short-term up to +125 °C

Article number	Nominal size	ID x OD mm	Bending radius (mm)	PU ring (m)
SILVYN® HFX-V0				
64400248	5/16"	10.1 x 14.4	65	30
64400241	3/8"	12.6 x 17.8	85	30
64400253	1/2"	16.0 x 21.1	110	30
64400242	3/4"	21.0 x 26.4	140	30
64400243	1"	26.5 x 33.1	170	30
64400244	1 1/4"	35.1 x 41.8	215	15
64400245	1 1/2"	40.3 x 47.8	250	15
64400246	2"	51.6 x 59.9	300	15
SILVYN® FCE-V0				
61814708	12	10.0 x 14.0	50	25
61814709	16	13.0 x 17.0	60	25
61814710	20	17.0 x 21.5	80	25
61814711	25	21.2 x 26.0	100	25
61814712	32	28.1 x 34.0	125	25
61814713	40	37.7 x 44.5	160	10
61814714	50	48.4 x 55.5	190	10

* Trade product, no Lapp product
 Photographs are not to scale and do not represent detailed images of the respective products.

Accessories

SILVYN® HFX-V0

- SILVYN® COMPACT M refer to main catalogue 2016/17
- SILVYN® COMPACT PG refer to main catalogue 2016/17
- SILVYN® COMPACT NPT refer to main catalogue 2016/17
- SILVYN® LTP-E refer to main catalogue 2016/17

SILVYN® FCE-V0

- SILVYN® FCE-M refer to page 53

Liquid-tight conduits • Liquid-tight conduits



SILVYN® ZHLS / SILVYN® FCE-LFH

Interlocked metal conduit with thick-walled Polyolefin jacket



SILVYN® ZHLS



SILVYN® FCE-LFH



Info

- Hazard Level: HL 3

Benefits

- The flexible conduit design enables small bending radii and is ideally suited for space-saving installations where space is limited in dry and damp interiors, as well as for outdoor applications
- Liquidtight

Application range

- For use in railway vehicles and buses, for fixed installations and applications where limited movement may occur
- Also applicable within oily environments and areas with increased ambient temperature

Product features

- UV-resistant
- Halogen-free and flame-retardant
- High mechanical and chemical resistance

Product Make-up

- Helically-wound metal protective conduit with interlocked profile
- Outer sheath: halogen-free, thermoplastic polyolefin compound

Technical data



Classification

ETIM 5.0 Class-ID: EC001179
ETIM 5.0 Class-Description:
Protective metallic hose



Certifications

IEC EN 61386-23
EN 45545-2 HL3



Colour delivered

Black (RAL 9005), UV-resistant



Material

Metal with Polyolefin jacket



Temperature range

-25°C to +80°C
Short-term: up to +100°C

Article number	Nominal size	ID x OD mm	Bending radius (mm)	PU ring (m)
SILVYN® ZHLS				
64400254	1/4"	6.4 x 11.5	40	30
64400255	5/16"	10.1 x 14.4	50	30
64400256	3/8"	12.6 x 17.8	60	30
64400257	1/2"	16.0 x 21.1	75	30
64400258	3/4"	21.0 x 26.4	90	30
64400259	1"	26.5 x 33.1	120	30
64400260	1 1/4"	35.1 x 41.8	135	15
64400261	1 1/2"	40.3 x 47.8	165	15
64400266	2"	51.6 x 59.9	210	15
SILVYN® FCE-LFH				
61814717	12	10.0 x 14.0	50	25
61814718	16	13.0 x 17.0	60	25
61814719	20	17.0 x 21.5	80	25
61814720	25	21.2 x 26.0	100	25
61814721	32	28.1 x 34.0	125	25
61814722	40	37.7 x 45.0	160	10
61814723	50	48.4 x 56.0	190	10

* Trade product, no Lapp product

Photographs are not to scale and do not represent detailed images of the respective products.

Accessories

SILVYN® ZHLS

- SILVYN® COMPACT M refer to main catalogue 2016/17
- SILVYN® COMPACT PG refer to main catalogue 2016/17
- SILVYN® COMPACT NPT refer to main catalogue 2016/17
- SILVYN® LTP-E refer to main catalogue 2016/17

SILVYN® FCE-LFH

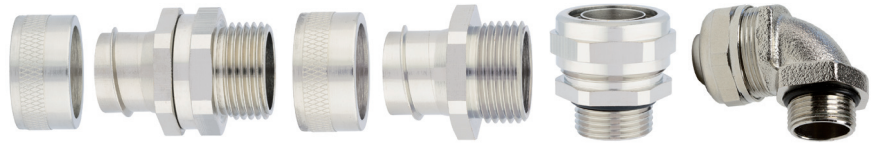
- SILVYN® FCE-M refer to page 53

SILVYN® FCE-M

Nickel-plated brass fitting with space-saving dimensions in various designs

Info

- Space-saving due to compact dimensions



Benefits

- High mechanical stability
- High tensile strength
- Space-saving application
- Corrosion-resistant

Application range

- In combination with protective conduit:
- SILVYN® FCE-V0
- SILVYN® FCE-LFH

Product Make-up

- Metric connection thread
- Hexagonal collar
- Threaded sleeve
- Cap nut

Technical data

Classification
 ETIM 5.0 Class-ID: EC001180
 ETIM 5.0 Class-Description: Screw connection for protective metallic hose

Material
SILVYN® FCE COMPACT
 Metal parts: nickel-plated brass
 Sealings: NBR
SILVYN® FCE-F, FCE-S
 Nickel-plated brass

IP
Protection rating
 SILVYN® FCE COMPACT: IP 68
 SILVYN® FCE-F, FCE-S: IP 54

Temperature range
 SILVYN® FCE COMPACT:
 -45°C to +105°C
 SILVYN® FCE-F, FCE-S:
 -55°C to +260°C

Article number	Metric size	Suitable for SILVYN® FCE	Pieces / PU
SILVYN® FCE COMPACT M			
55503624	12 x 1.5	13	10
55503625	16 x 1.5	16	10
55503626	20 x 1.5	16	10
55503627	20 x 1.5	20	10
55503628	25 x 1.5	25	5
61803855	32 x 1.5	32	5
61803856	40 x 1.5	40	2
SILVYN® FCE COMPACT 90° M			
61803860	16 x 1.5	16	10
61803861	20 x 1.5	16	10
61803862	20 x 1.5	20	10
61803863	25 x 1.5	25	5
61803864	32 x 1.5	32	5
SILVYN® FCE-F M			
55503600	10 x 1.0	10	10
55503601	12 x 1.5	10	10
55503602	12 x 1.5	13	10
55503603	16 x 1.5	13	10
55503604	16 x 1.5	16	10
55503605	20 x 1.5	16	10
55503606	20 x 1.5	20	10
55503607	25 x 1.5	25	5
55503608	32 x 1.5	32	5
55503609	40 x 1.5	40	2
55503610	50 x 1.5	50	2
55503611	63 x 1.5	50	2
SILVYN® FCE-S M			
55503612			
55503613	12 x 1.5	10	10
55503614	12 x 1.5	13	10
55503615	16 x 1.5	13	10
55503616	16 x 1.5	16	10
55503617	20 x 1.5	16	10
55503618	20 x 1.5	20	10
55503619	25 x 1.5	25	5
55503620	32 x 1.5	32	5
55503621	40 x 1.5	40	2
55503622	50 x 1.5	50	2
55503623	63 x 1.5	50	2

Photographs are not to scale and do not represent detailed images of the respective products.



Terminal Box

Enclosure, screw open-close type



Info

- The product family established itself in the industry sector with high quality and easy mounting

Benefits

- Tidy storage
- Dust and moisture protection
- Few operation steps, easy to assemble
- Transparent case lid supports good overview
- Diversity of variants

Product features

- Enclosure with screw caps
- Optional grey or transparent covers
- 3,5mm screw diameter for mounting plate
- 50mm extension frame for altitudal changes

Note

- Aluminium swingout panel available on request
- Perforated plastic plate deliverable for all sizes
- Including mounting material

Technical data

DIN VDE **Certifications**
cULus listed acc. to File No. E178096

i **On request**
More sizes and colours available

Z_∞ **Info**
Shock resistance: IK 08 PC (see data sheet for further information)

RAL **Colour delivered**
Enclosure: RAL 7035 light grey
Cover: transparent or RAL 7035 light grey

Material
Enclosure: Polycarbonate
Cover: Polycarbonate
Mounting panel: ABS

IP **Protection rating**
IP 66

Temperature range
-40°C to +85°C

Article number	Article description	Dimensions W x H x D (mm)	Pieces / PU
Mounting panel TB			
53110140	Mounting panel TB	160.0 x 160.0 x 4.0	1
53110141	Mounting panel TB	252.0 x 161.0 x 3.4	1
53110142	Mounting panel TB	267.0 x 267.0 x 3.3	1
53110143	Mounting panel TB	240.0 x 300.0 x 4.0	1
53110144	Mounting panel TB	155.0 x 335.0 x 4.0	1
53110145	Mounting panel TB	351.0 x 251.0 x 4.3	1
Terminal Box with grey cover			
53110100	Terminal Box GY	190.0 x 190.0 x 130.0	1
53110102	Terminal Box GY	280.0 x 190.0 x 130.0	1
53110104	Terminal Box GY	280.0 x 190.0 x 180.0	1
53110106	Terminal Box GY	280.0 x 190.0 x 230.0	1
53110108	Terminal Box GY	280.0 x 280.0 x 130.0	1
53110110	Terminal Box GY	340.0 x 280.0 x 130.0	1
53110112	Terminal Box GY	380.0 x 190.0 x 130.0	1
53110114	Terminal Box GY	380.0 x 190.0 x 180.0	1
53110116	Terminal Box GY	380.0 x 190.0 x 230.0	1
53110118	Terminal Box GY	380.0 x 280.0 x 130.0	1
53110120	Terminal Box GY	380.0 x 280.0 x 180.0	1
53110122	Terminal Box GY	380.0 x 280.0 x 230.0	1
53110124	Terminal Box GY	560.0 x 280.0 x 130.0	1
53110126	Terminal Box GY	560.0 x 380.0 x 180.0	1
Terminal Box with transparent cover			
53110101	Terminal Box TR	190.0 x 190.0 x 130.0	1
53110103	Terminal Box TR	280.0 x 190.0 x 130.0	1
53110105	Terminal Box TR	280.0 x 190.0 x 180.0	1
53110107	Terminal Box TR	280.0 x 190.0 x 230.0	1
53110109	Terminal Box TR	280.0 x 280.0 x 130.0	1
53110111	Terminal Box TR	340.0 x 280.0 x 130.0	1
53110113	Terminal Box TR	380.0 x 190.0 x 130.0	1
53110115	Terminal Box TR	380.0 x 190.0 x 180.0	1
53110117	Terminal Box TR	380.0 x 190.0 x 230.0	1
53110119	Terminal Box TR	380.0 x 280.0 x 130.0	1
53110121	Terminal Box TR	380.0 x 280.0 x 180.0	1
53110123	Terminal Box TR	380.0 x 280.0 x 230.0	1
53110125	Terminal Box TR	560.0 x 280.0 x 130.0	1
53110127	Terminal Box TR	560.0 x 380.0 x 180.0	1

Photographs are not to scale and do not represent detailed images of the respective products.

Accessories

- Kraftform® adjustable torque screwdriver/Kraftform Kompakt® Set refer to main catalogue 2016/17



Economic Box

Economic enclosure with hinges and quick release fasteners



Info

- Economic enclosure with hinges and quick release fasteners



Benefits

- Tidy storage
- Dust and moisture protection
- Few work steps, free assembly in any position
- Fast-snap-lock for easy handling
- Good combination of quality and price

Product features

- Enclosure with hinges and quick release fasteners
- Unique dovetail guide for frame or front panel (no standoff)
- Integrated mounting panel (included in the enclosure price)
- 3,5mm screw diameter for mounting plate

Note

- Wall mount (sold separately)
- p/n upon request

Technical data



Certifications

cULus listed acc. to File No. E178096



Info

Shock resistance IK 07
(further details see data sheet)



Colour delivered

Light grey (RAL 7035)



Material

ABS plastic



Protection rating

IP 66



Temperature range

-40°C to +85°C

Article number	Article description	Dimensions W x H x D (mm)	Pieces / PU
Economic Box			
53110130	Economic Box	150.0 x 150.0 x 90.0	1
53110131	Economic Box	150.0 x 200.0 x 100.0	1
53110132	Economic Box	180.0 x 180.0 x 150.0	1
53110133	Economic Box	200.0 x 300.0 x 160.0	1
53110134	Economic Box	300.0 x 400.0 x 160.0	1
53110135	Economic Box	400.0 x 500.0 x 160.0	1

Photographs are not to scale and do not represent detailed images of the respective products.

Accessories

- Kraftform® adjustable torque screwdriver/Kraftform Kompakt® Set refer to main catalogue 2016/17

Reach us around the world

...or closer to home. To contact your local Lapp Group representative:

please visit

www.lappgroup.com/worldwide

Enter the world
of Lapp:



Our apps are available from
the following stores:



▶ THIS CATALOGUE IS VALID
FROM NOVEMBER 2016.

The following applies for the use of our products

The conformity of our products to the relevant European directives and compliance with the provisions contained therein shall be indicated by the CE marking.

The safety of our products is closely associated with how they are used. A knowledge of and adherence to the respective international/national standards of use (e.g. DIN VDE 0100; 0298) are

mandatory. There are particular risks if installed improperly. This applies to all our products/items:

Processing is only to be done by an authorised electrician! Otherwise, there is the risk of an electric shock or a fire ignited by electric current!

Safety

Without exception, our products are tested for application safety in accordance with defined standards and our own regulations, which complement the standards. Relevant legal requirements and safety regulations are also observed. Provided due care and attention is paid, the possibility of product-specific danger to the user may thus reasonably be excluded. Where products are used carelessly or incorrectly, however, considerable danger to persons and the

environment may arise. For this reason, our cables must only be processed and/or used responsibly by trained electricians or specialists. This catalogue contains general information for the application of each product. Independent of such information, the application standards DIN VDE 0298 and DIN VDE 0891 for cables will apply. Excerpts from these standards, as well as complementary selection and application tables, design and installation

guidelines, are contained in the tables in the appendix to the current main catalogue. Our machines and installation tools are – where necessary – designed in accordance with the machine guidelines and display the CE identification mark. It must be noted, however, that our machines and installation tools must only be used by trained specialist personnel and for the purpose for which they were designed.

©Copyright by U.I. Lapp GmbH. Reprinting or reproduction of the text or the illustrations may be made only with written approval and with correct indication of source. We reserve the right to make modifications to our products, especially those based on technical improvements or continued development. All illustrations and numerical data etc. are therefore without warranty and are subject to change.



ÖLFLEX®
Power and control cables



UNITRONIC®
Data communication systems



ETHERLINE®
Data communication systems
for ETHERNET technology



HITRONIC®
Optical transmission systems



EPIC®
Industrial connectors



SKINTOP®
Cable glands



SILVYN®
Protective cable conduit systems
and cable carrier systems



FLEXIMARK®
Marking systems

Follow the Lapp Group on



LAPP GROUP

LAPP HUNGÁRIA Kft.

2040 Budaörs . Neumann János u.1.

Tel. +36 23 501 250 . Fax +36 501 259

sales@lapphungaria.hu . www.lapphungaria.hu