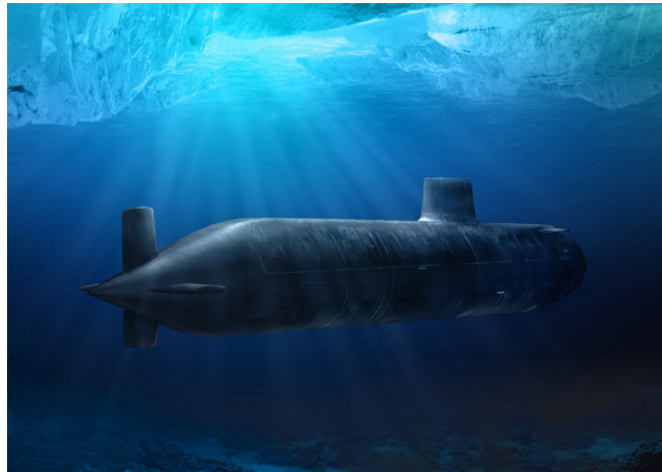


# Our Targeted Market Segments

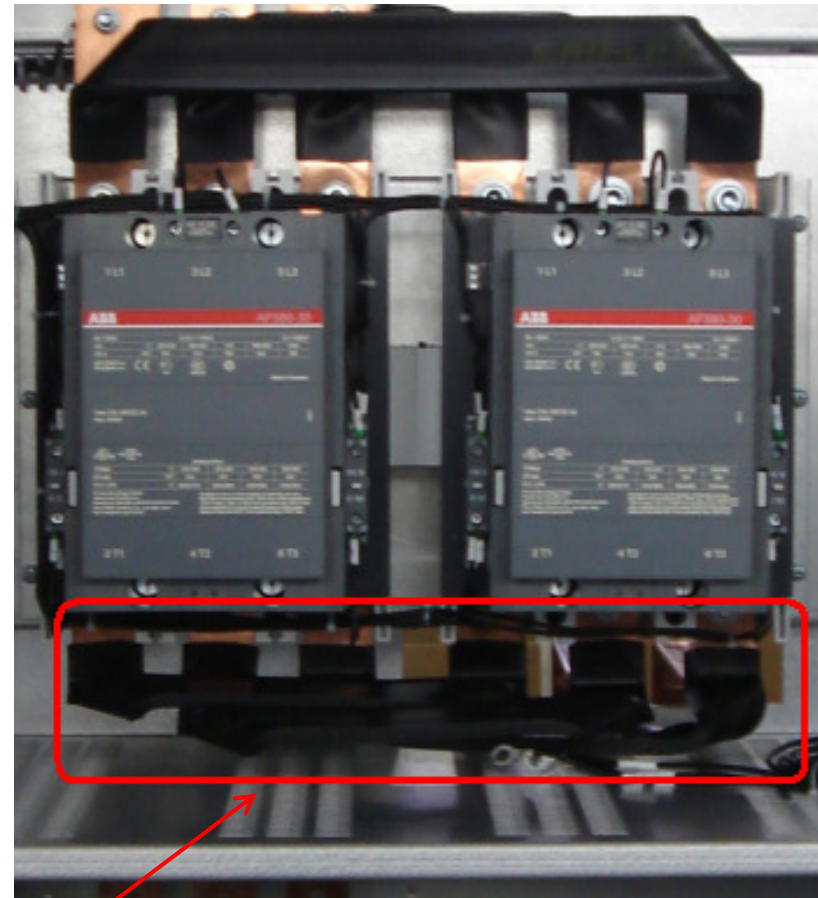
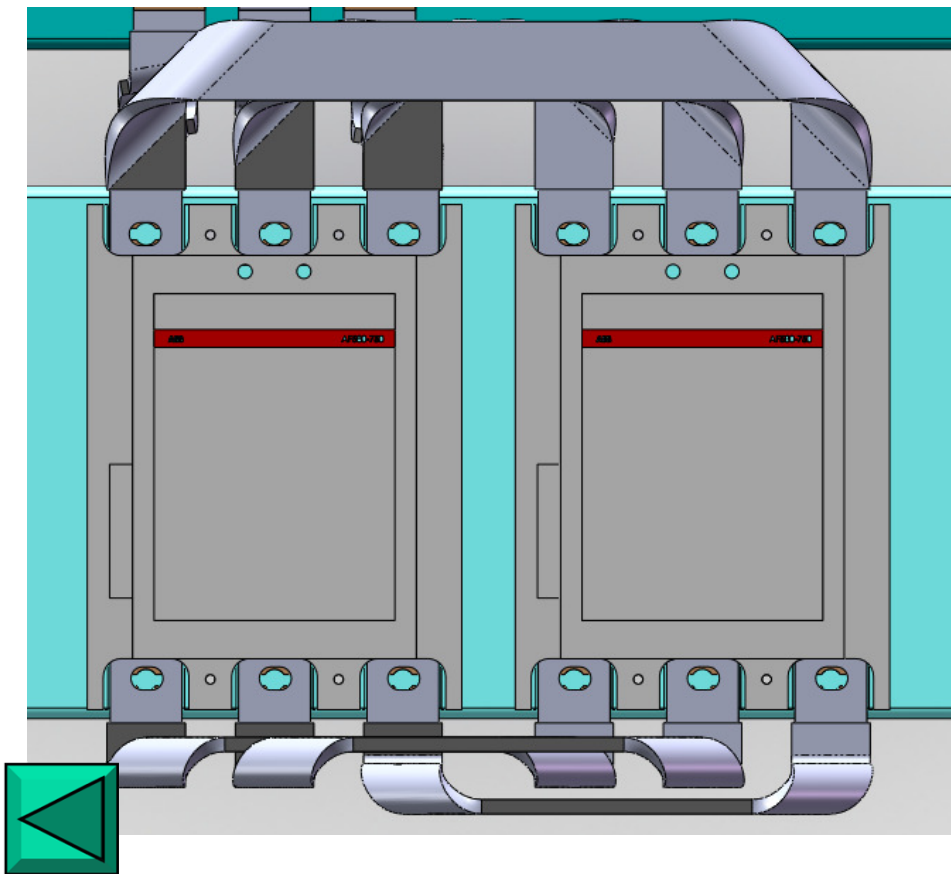
## Marine

ERICO®



# ***QUESTIONS***

# Electrical Power Connections

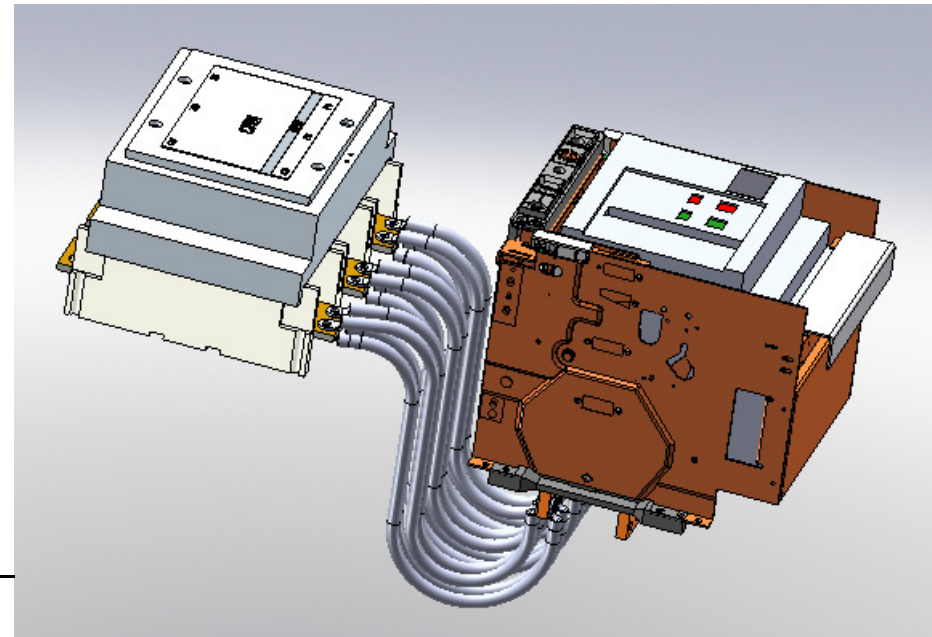
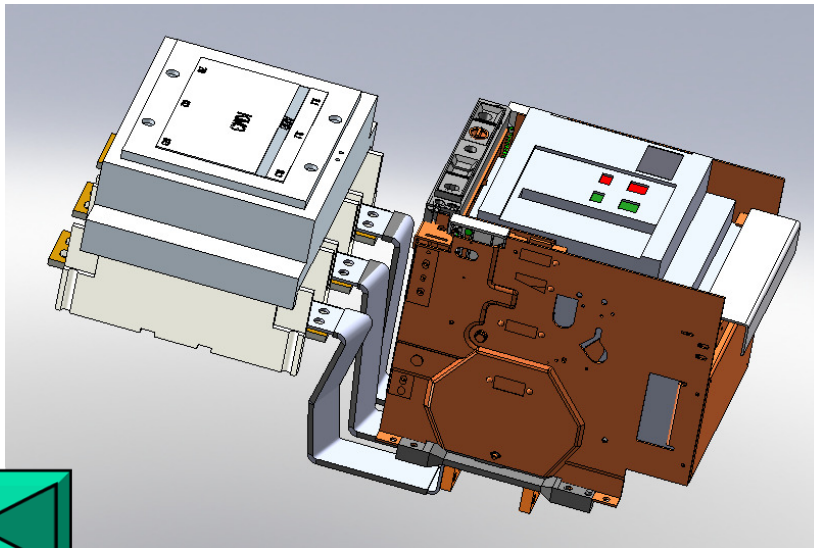


Compact connection

# Electrical Power Connections

## ERIFLEX® FLEXIBAR Vs. Cable

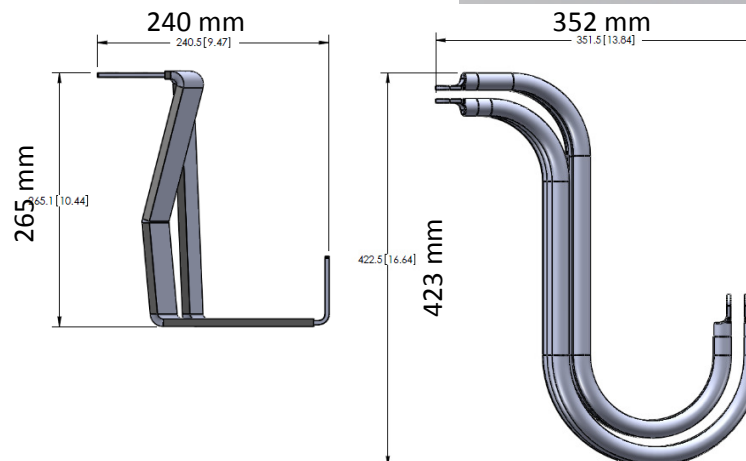
Description: The rated current for each phase is 1000A. The size for ERIFLEX® FLEXIBAR is 4X63X1 for each phase; the size for cable is 150mm<sup>2</sup> x 4 for each phase. **Space Saving: 57% Smaller**



### Time Saving: 50%

Regarding ERIFLEX® FLEXIBAR solution, one hour is enough for installation.

Regarding Cable solution, it need at least 2 hours to installation.



### Material Saving: 37%

Cable Solution				
QTY	Part Description	Length (mm)	Unit price (Euros)	Total cost
12	150MM <sup>2</sup> wire	700	18	216 Euros
24	150MM <sup>2</sup> lug		2,10	50,40 Euros
ERIFLEX FLEXIBAR Solution				
QTY	Part Description	Length (mm)	Unit price (Euros)	Total cost
3	4X63X1	610	By 2 meters	166 Euros

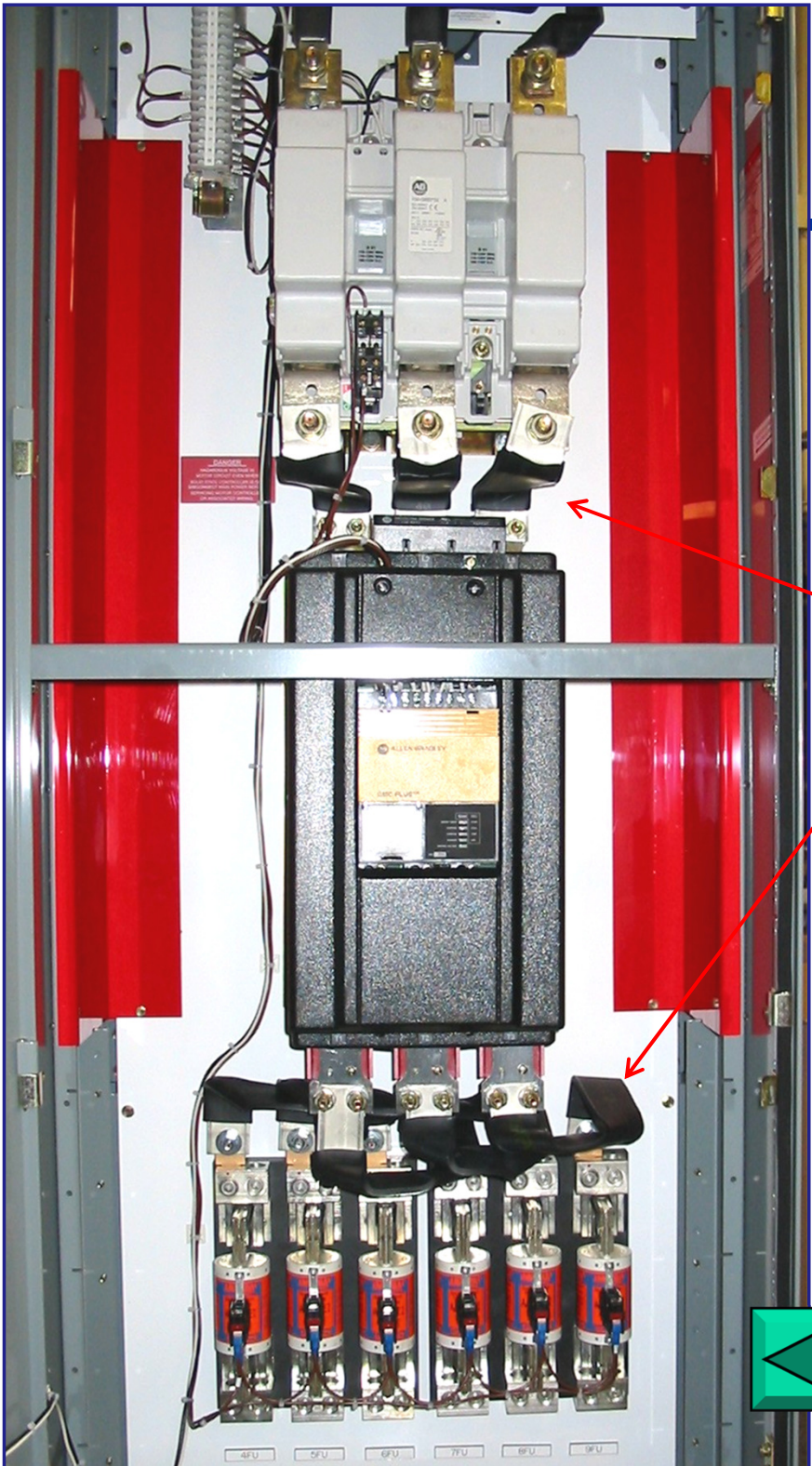
### Time, Space, Material Saving:

This panel is in process of modification. For each phase, two cables are replaced by ERIFLEX® FLEXIBAR.

Early design with ERIFLEX® FLEXIBAR is necessary to take advantage of the full benefits of size, material, weight, and cost savings. Had this been done with this panel, the enclosure size would have been much smaller :

- ✓ Cable bending radius increase significantly the panel board size.
- ✓ Due to “Skin effect”, two cable can be replace by one ERIFLEX® FLEXIBAR only.





**Time, Space, Material Saving:**

This panel has been designed & developed using ERIFLEX® FLEXIBAR. Such compact configuration is not possible with cable, and allows to reduce drastically the panel size





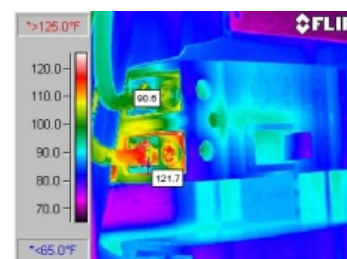
**Improve reliability with ERIFLEX® FLEXIBAR**

- ✓Less equipment failure
- ✓Superior reliability (reduced stress on connections)
- ✓Improved vibration resistance
- ✓100% dielectric tested
- ✓No lugs
- ✓Less parts

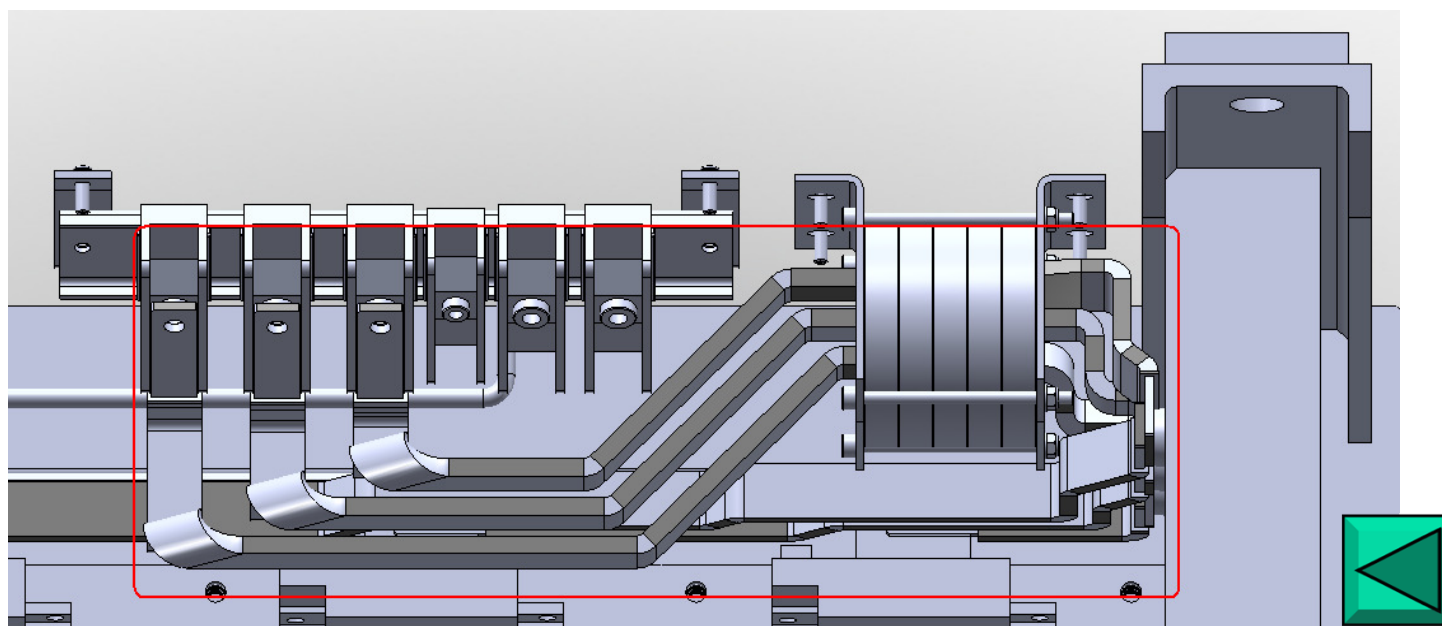
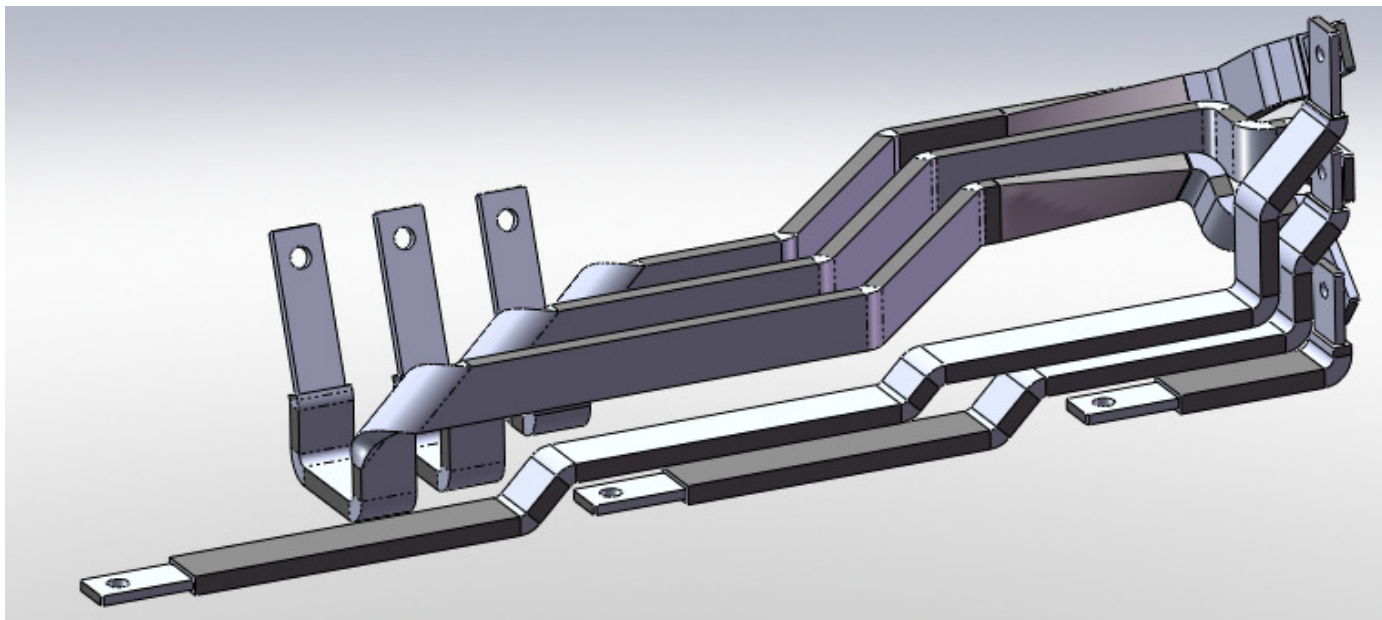


**Reliability and Durability**

Reliability and Durability No one comes close to the proven toughness of P&H Mining equipment. A 125-year tradition of handling the most rigorous demands of worldwide mining might be proof enough.



**Complicated shape  
designed to guide  
ERIFLEX® FLEXIBAR  
through magnetic  
loop**

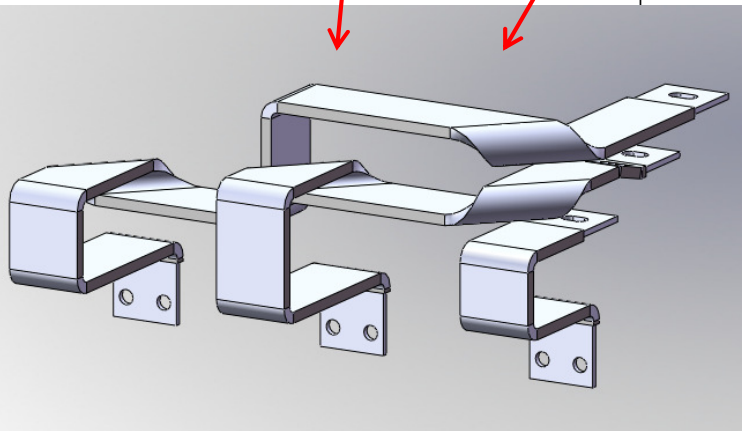
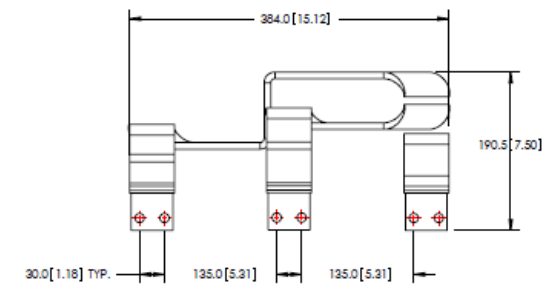
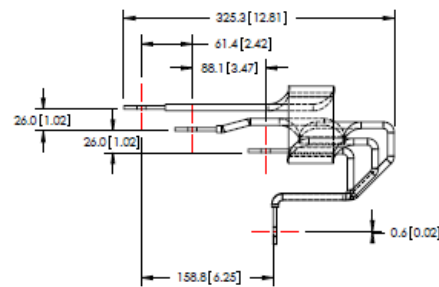
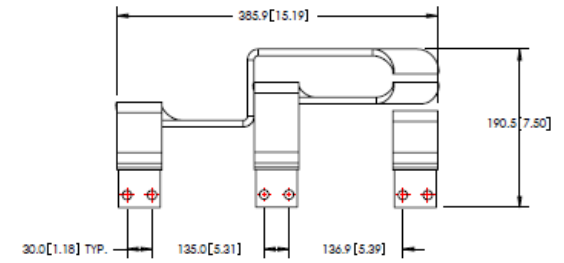
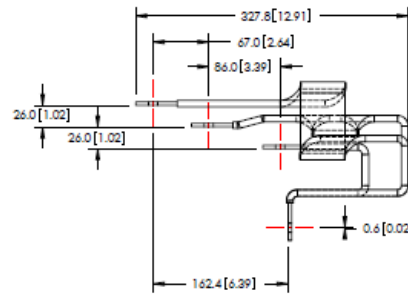
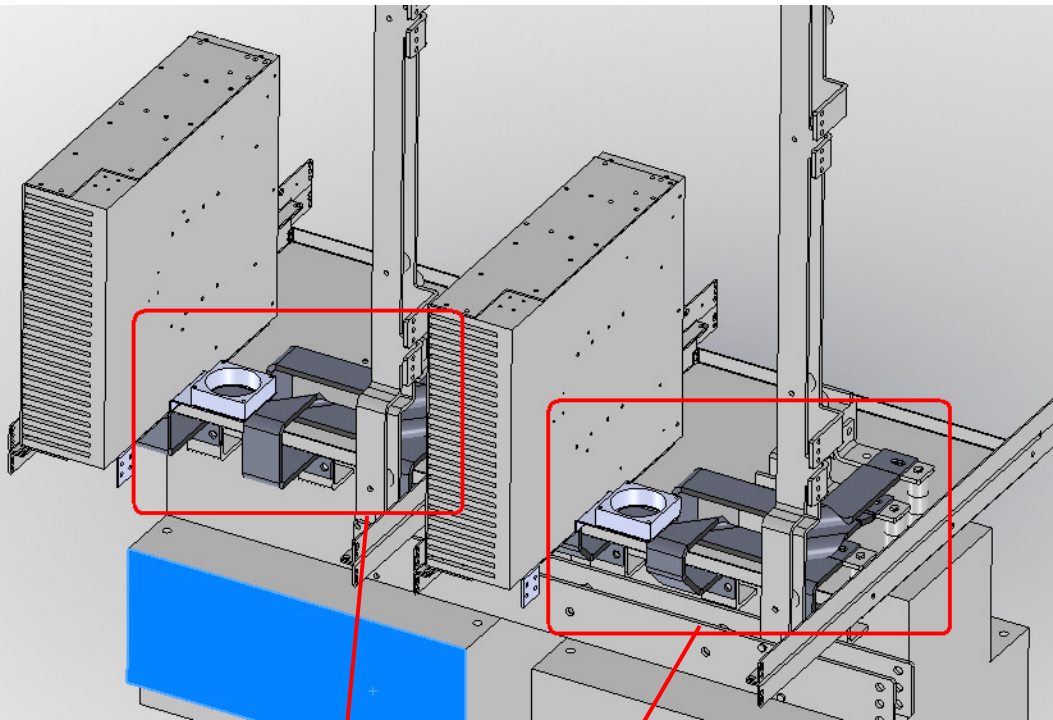






**ERICO®**

**Complicated shape made  
with ERIFLEX® FLEXIBAR**



THIS DOCUMENT AND THE CONTENTS THEREOF  
IS THE PROPERTY OF ERICO, INC. AND IS  
FURNISHED TO YOU FOR INFORMATION ONLY.  
THE INFORMATION CONTAINED HEREIN IS  
CONFIDENTIAL AND OF A PROPRIETARY NATURE  
AND MAY NOT BE DISCLOSED TO THIRD PARTIES  
WITHOUT THE EXPRESS WRITTEN APPROVAL OF  
ERICO, INC.  
ALL DIMENSIONS AND TOLERANCES IN mm (INCH)  
UNLESS OTHERWISE SPECIFIED.  
REVISIONS TO BE COMPLETED:  
NO MANUAL CHANGES PERMITTED.  
ERICO\_FLEX\_B\_LANL\_V1.1

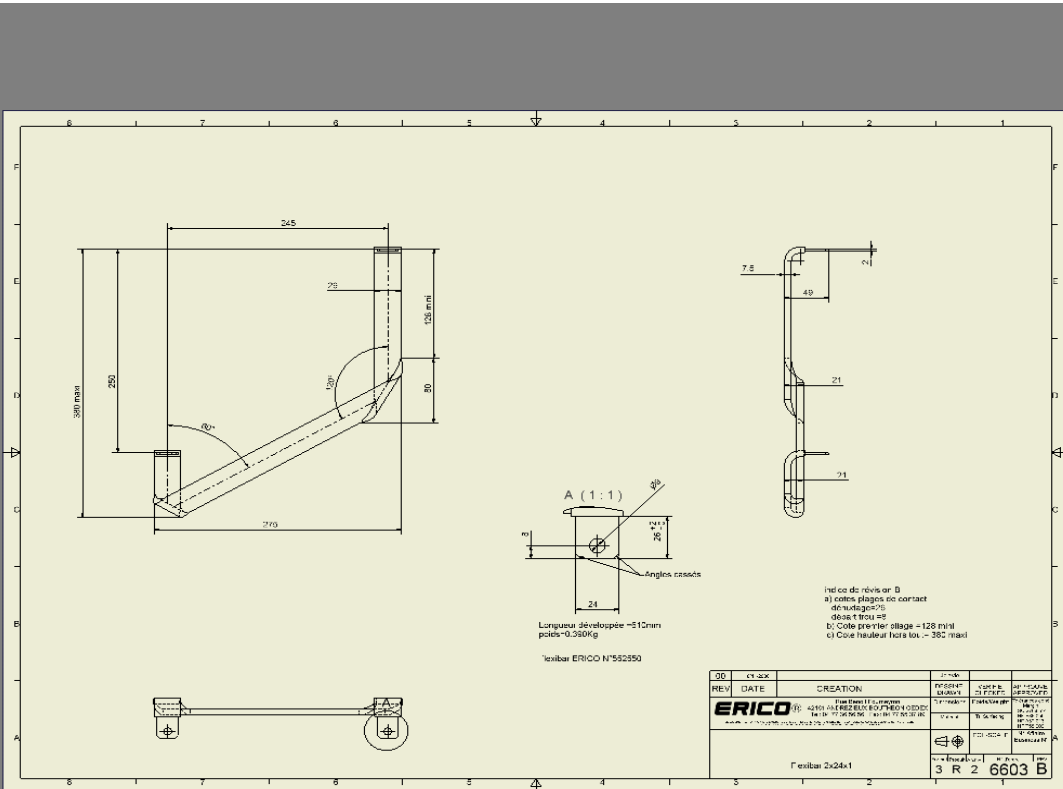
TOLERANCE (MM) UNLESS NOTED ANGULAR TOLERANCE: 21° FRACTIONAL TOLERANCE: NA TWO PLACE DECIMAL: 20/10 THREE PLACE DECIMAL: NA	<b>ERICO®</b>	THIRD ANGLE PROJECTION
TOLERANCE (INCH) UNLESS NOTED ANGULAR TOLERANCE: 21° ONE PLACE DECIMAL: 2/10 TWO PLACE DECIMAL: NA	TITLE: BUSBAR, FLEXIBLE, ASSM, 2 METER LG, 4X50X1MM, EHE	
B SIZE   SHT 1 OF 1	SCALE: DWG 1:4	EHE-NIBianGui-500

**Before**



**ERICO**

**CONNECTION BATTERY UNITS IN YACHTS  
AT ROYAL HUISMAN NETHERLANDS :  
Preformed FLEXIBAR  
to reduce the size of the complete unit.**



**After**

