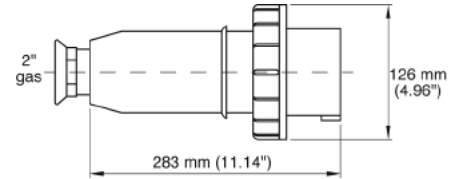


EPIC® Pin & Sleeve Connectors

North American 100A & International 125A Dimensional Data

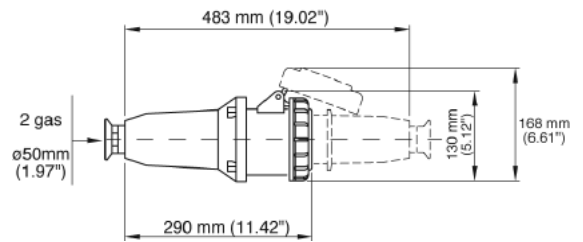
Male Plugs

CEE Series Straight with Cable Gland (IP 67)



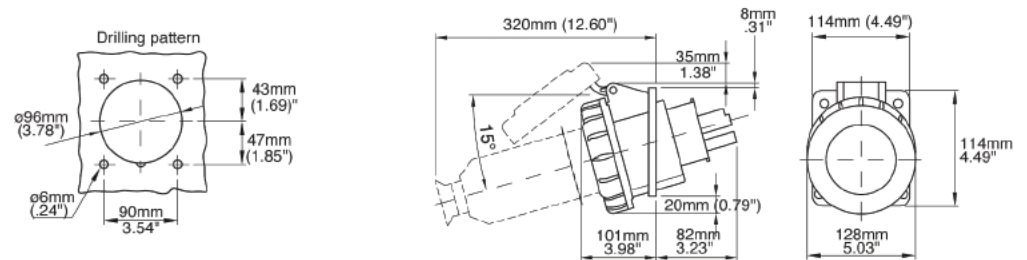
Female Connectors

CEE Series Straight with Cable Gland (IP 67)

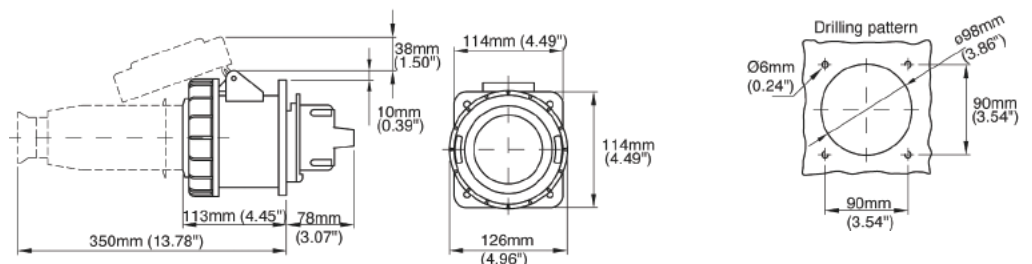
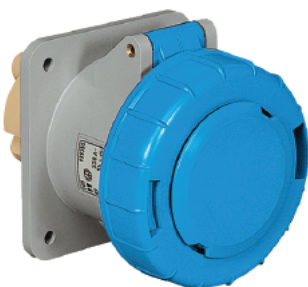


Female Receptacles

CEE Series Angled Panel Mount (IP 67)



CEE Series Straight Panel Mount (IP 67)

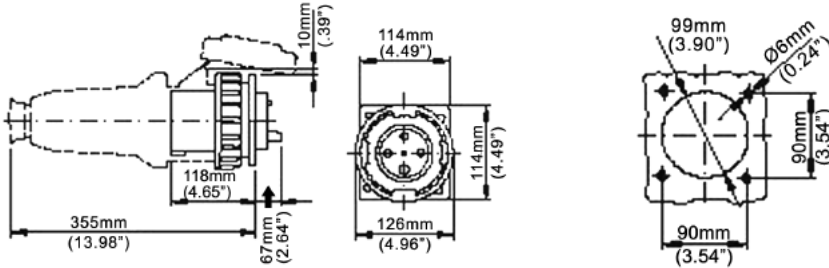


EPIC® Pin & Sleeve Connectors

North American 100A & International 125A Dimensional Data

Male Plug Inlets

CEE Series Straight Panel Mount Inlet (IP 67)



Watertight Covers for Male Plugs and Inlets (IP 67)

| Amps | Plug Types | Part Number |
|---------|------------|-------------|
| 20/16 | 2+PE | 476903 |
| | 3+PE | 476913 |
| | 3+N+PE | 476923 |
| 30/32 | 2+PE | 476905 |
| | 3+PE | 476905 |
| | 3+N+PE | 476925 |
| 60/63 | ALL | PC60 |
| 100/125 | ALL | PC100 |



Flanges with Cable Glands for ALUPRES Switched Socket Outlets

Flat Flange

Raised Flanges



| | Window | For Cable Diameter (mm) | Thread Type | Part Number |
|------------|-------------|-------------------------|-------------|-------------|
| 20/16 Amps | F0 (Flat) | 12 - 16 | 1/2" | 541080FX * |
| | | 16 - 20 | 3/4" | 541090FX ** |
| | | 20 - 25-5 | 1" | 541030FX |
| | | 2 x 12-16 | 1/2" | 541040 |
| 30/32 Amps | F1 (Raised) | 22 - 25.5 | 1" | 540151FX |
| | | 26 - 36 | 1 1/4" | 540141FX |
| | | 2 x 16-20 | 3/4" | 540161 |

* Supplied with 20/16 Amp ALUPRES: 2+PE, 3+PE

** Supplied with 20/16 Amp ALUPRES: 3+N+PE

Fuses for ULYSSE Switched Socket Outlets

ULYSSE Switch Socket Outlets use standard IEC60269 cylindrical fuses. Fuse selection is application specific and typically based on providing shortcircuit line protection (gL-gG fast-acting type) or motor protection (aM slow acting type). Consult with a fuse manufacturer (eg. Littlefuse, Bussmann, etc.) for proper selection and to place an order. (Lapp does not carry fuses.) The table below shows general fuse information for each ULYSSE Outlet size. Order one fuse or each outlet pole (ex. 400139FX 250V, 20A, 3+PE outlet requires (3) 10 x38 fuses).

| Switch Outlet Rating (Amps) | Fuse Size AxB (mm) | Fuse Current Rating (Amps) | Fuse Voltage Rating (Volts) |
|-----------------------------|--------------------|----------------------------|-----------------------------|
| 20/16 | 10x38 | 0.5 - 32 | 500V |
| 30/32 | 14x51 | 2 - 50 | 500V |
| 63 | 22x58 | 16 - 100 | 500V |