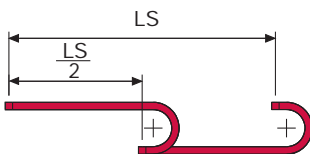
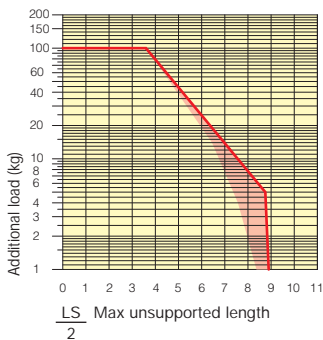


Self-Supporting Capacity Diagram

The maximum length of the self-supporting capacity ($\frac{LS}{2}$) in relationship to the weight of the cables and hoses contained per linear metre.



The red marking in the diagram area considers the difference of weight between various widths of chain.

For applications with $\frac{LS}{2}$ and weights not included in the area of the diagram showing self-supporting capacity, verify the possible use of support rollers (see page 30).

Bright Zinc Plated Steel End Brackets

The end brackets set, containing four steel plates screwed to the links allows the two ends of the chain to be attached to the equipment.

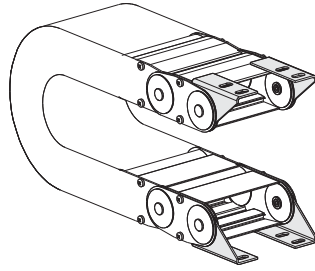
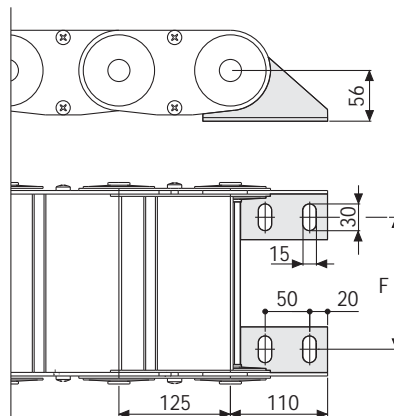


Fig. A
Chain fixed outside the radius. (Fig A)



Chain Type	F mm
BS3500NC104	80
BS3500NC154	130
BS3500NC204	180
BS3500NC254	230
BS3500NC304	280
BS3500NC404	380

Special dimension F=W-73

Bright Zinc Plated Steel Type Part Numbers

Complete Set Assembled	
Chain	End Brackets
Type	Set
BS3500C...	A3500NCKM □**

Complete Set Unassembled	
Chain	End Brackets
Type	Set
BS3500C...	A3500NCK

** 1=Pos.1; 2=Pos.2; 3=Pos.3
See end brackets mounting variations page 31.

Serie Steel

BS3500C

Cable Chain
in Bright Zinc Plated Steel



Suitable to long travel distance.
See page 195