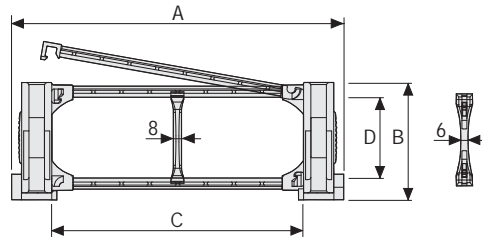


Serie Sliding

M80PI/M80PE Nylon Cable Chain with openable frames

Inner height (D) 80,5 mm
Sideband & Frame construction with large anti-friction single-pin.
Frames openable from inner radius (.PI) and outer radius (.PE).
As standard the chain comes with frames every second link, on request with frames every link.
Vertical separators are available



Separator	
- Unassembled	Part.no S80
- Assembled	Part.no S80MC
Strong-hold separator for C > 250 mm	
- Unassembled	Part.no S80HOL
- Assembled	Part.no S80HOLMC
Pin	
Part.no PGE80-PNI80	

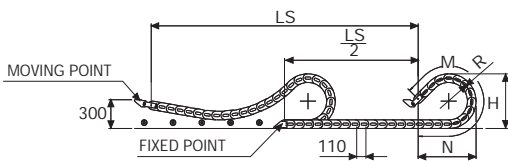
Technical characteristics

Speed	5 m/s
Acceleration	13 m/s ²

For higher requirements please consult our technical dept.

A	B	C	D	R	Weight/m	Chain
mm	mm	mm	mm	mm	kg	Part number
195	117	115	80,5	200-250-300-400-500-700	8,60	M80PI(PE)115 □□□*
215	117	135	80,5	200-250-300-400-500-700	8,67	M80PI(PE)135 □□□*
240	117	160	80,5	200-250-300-400-500-700	8,73	M80PI(PE)160 □□□*
247	117	167	80,5	200-250-300-400-500-700	8,75	M80PI(PE)167 □□□*
270	117	190	80,5	200-250-300-400-500-700	8,80	M80PI(PE)190 □□□*
310	117	230	80,5	200-250-300-400-500-700	8,93	M80PI(PE)230 □□□*
345	117	265	80,5	200-250-300-400-500-700	9,05	M80PI(PE)265 □□□*
371	117	291	80,5	200-250-300-400-500-700	9,11	M80PI(PE)291 □□□*
395	117	315	80,5	200-250-300-400-500-700	9,17	M80PI(PE)315 □□□*
421	117	341	80,5	200-250-300-400-500-700	9,25	M80PI(PE)341 □□□*
445	117	365	80,5	200-250-300-400-500-700	9,33	M80PI(PE)365 □□□*
471	117	391	80,5	200-250-300-400-500-700	9,40	M80PI(PE)391 □□□*
495	117	415	80,5	200-250-300-400-500-700	9,47	M80PI(PE)415 □□□*
619	117	539	80,5	200-250-300-400-500-700	10,00	M80PI(PE)539 □□□*

*Complete the code by inserting the value of the radius (R): Ex. M80PI(PE)115 □ □ □ □
Chain equipped with nylon frame every pitch: complete the code by inserting the letter D.
M80PI(PE)115250 □



Length of chain (L)

Half travel distance ($\frac{LS}{2}$)
plus length of curve (M)

$$L = \frac{LS}{2} + M$$

R	H	N	M
mm	mm	mm	mm
200	517	790	1730
250	617	1120	2480
300	717	1460	3220
400	917	2120	4700
500	1117	2780	6180
700	1517	4120	9150



End Brackets

The end brackets set allows the two ends of the chain to be attached to the equipment. One set comprises two movable end brackets to install at the moving point and two standard steel end brackets to install at the fixed point.

Bright Zinc Plated Steel Movable Type* (fixed point) Bright Zinc Plated Steel Type* (moving point)

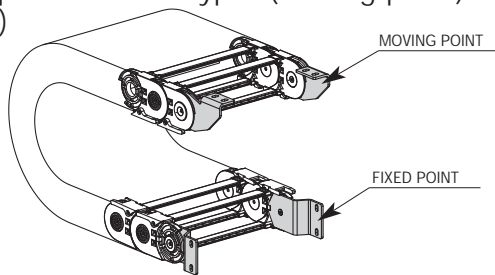
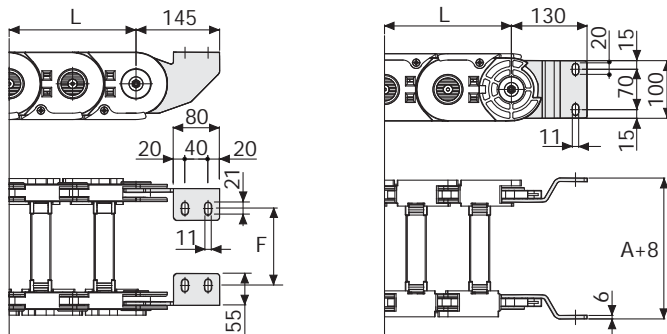


Fig. A
Chain fixed outside the radius. (Fig A)



Chain Type	F mm
M80PI(PE)115	92
M80PI(PE)135	112
M80PI(PE)160	137
M80PI(PE)167	144
M80PI(PE)190	167
M80PI(PE)230	207
M80PI(PE)265	242
M80PI(PE)291	268
M80PI(PE)315	292
M80PI(PE)341	318
M80PI(PE)365	342
M80PI(PE)391	368
M80PI(PE)415	392
M80PI(PE)539	516

Bright Zinc Plated Steel Type Part Numbers

Complete Set Assembled	
Chain	End Brackets
Type	Set
M80PI/PE...	A80PKM

Complete Set Unassembled	
Chain	End Brackets
Type	Set
M80PI/PE...	A80PK

*Available on request in stainless steel

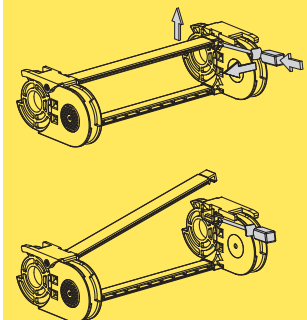
Serie Sliding

M80PI

M80PE

Nylon Cable Chain with openable frames

3



How to open the cover.

For further information please consult Brevetti Stendalto's Technical Office