

End Brackets

The end brackets set allows the two ends of the chain to be attached to the equipment. One set comprises two movable end brackets to install at the moving point and two standard steel end brackets to install at the fixed point.

Bright Zinc Plated Steel Movable Type* (moving point) Bright Zinc Plated Steel Type* (fixed point)

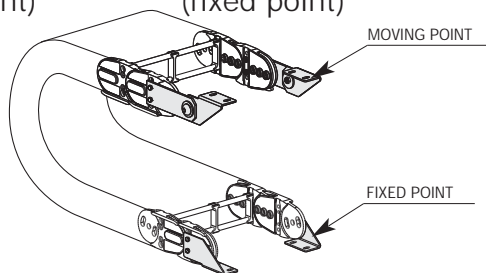
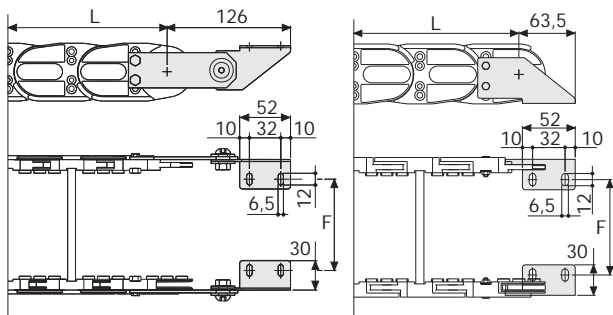


Fig. A
Chain fixed outside the radius. (Fig A)



Chain Type	F mm
SR326B075	67
SR326B100	92
SR326B150	142
SR326B200	192
SR326B250	242
SR326B300	292
Special dimension F=A-48	

Bright Zinc Plated Steel Type Part Numbers

Chain Type	End Brackets Set
SR326B...	A326KM

Chain Type	End Brackets Set
SR326B...	A326K

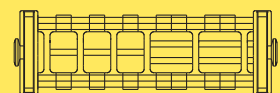
* Available on request in stainless steel

Serie Sliding

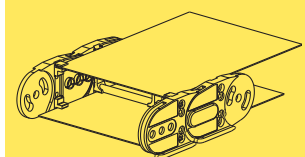
SR326B

Nylon Sliding Cable Chain
with un-screwable aluminium rods

3



Supplementary movable separators.



Steel laminar cover.

Special tool to remove the connecting pivots:
Part Number PZ036.



For further information please consult Brevetti Stendalto's Technical Office