

THE WORLD OF LAPP

EPIC[®] Industrial connectors
for railway technology



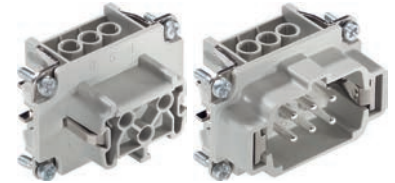
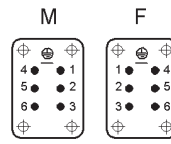
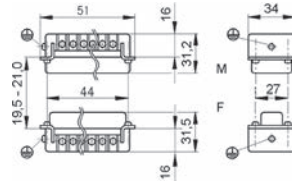


Info

- Proven screw for easy installation
- Railway applications

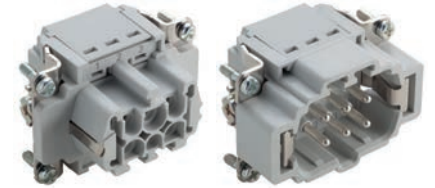
Info

- Push-In version - fast and easy tool free connection technology
- Railway applications



EPIC® H-BE 6 Push-In termination

The proven standard inserts for easy assembly



Suitable housing

- EPIC® ULTRA H-B 6
- EPIC® H-B 6 Housings
- EPIC® QUICK & EASY Mounting system
- Refer to Selection Table A 10 to select the required inserts and housings

Benefits

EPIC® H-BE 6 Screw termination

- Standard inserts with screw, crimp cage clamp and Push-In termination
- The EPIC® H-BE series is suitable for applications that require a reliable connection when working with high voltages and currents
- Railway applications
 - Fire protection on railway vehicles: Test according EN 45545-2. Requirement sets R22 and R23. Hazard level HL1, HL2 and HL4

EPIC® H-BE 6 Push-In termination

- Insertion of cores with end sleeves in Push-In inserts gives mounting safety and time saving without any tools
- Easy dismantling and insertion of wires by pushing the orange button
- Test socket for standard 2mm test tip for easy testing of Push-In inserts
- Railway applications
 - Fire protection on railway vehicles: Test according EN 45545-2. Requirement sets R22 and R23. Hazard level HL1, HL2 and HL4
- The EPIC® H-BE series is suitable for applications that require a reliable connection when working with high voltages and currents

Technical data

	Classification ETIM 5.0 Class-ID: EC000438 ETIM 5.0 Class-Description: Contact insert for industrial connectors		Number of contacts 6 + PE
	Rated voltage (V) IEC: 500 VUL: 600 VCSA: 600 V		Termination methods EPIC® H-BE 6 Screw termination Screw termination: 0.5 - 2.5 mm² EPIC® H-BE 6 Push-In termination Push-In termination: 0.14 - 2.5mm²
	Rated impulse voltage 6 kV		Stripping length (mm) EPIC® H-BE 6 Screw termination 8 EPIC® H-BE 6 Push-In termination 10
	Rated current (A) EPIC® H-BE 6 Screw termination IEC: 16 A UL: 16 A CSA: 16 A EPIC® H-BE 6 Push-In termination IEC: 16 A UL: 13 A CSA: 13 A		Cycle of mechanical operation 100
	Degree of soiling 3		Certifications EPIC® H-BE 6 Screw termination Certified production control: VDE-REG. no.: B437 UL-tested: UL File Number: E75770 EPIC® H-BE 6 Push-In termination UL-tested: UL File Number: E75770
	Contact resistance < 2 mOhm		Temperature range -40°C to +100°C, short-term up to +125°C
	Contacts Copper alloy, hard silver-plated		

Application range

EPIC® H-BE 6 Screw termination

- Mechanical engineering
- Plastics industry
- Light & sound technology
- Railway applications / vehicle construction

EPIC® H-BE 6 Push-In termination

- Mechanical engineering
- Plastics industry
- Light & sound technology
- Railway applications / vehicle construction

Suitable tools

EPIC® H-BE 6 Screw termination

- PEW 8.186 crimping pliers refer to main catalogue
- Kraftform® adjustable torque screwdriver/ Kraftform Kompakt® Set refer to main catalogue
- Recommended crimping tool when conductor end-sleeves are used: PEW 8.186

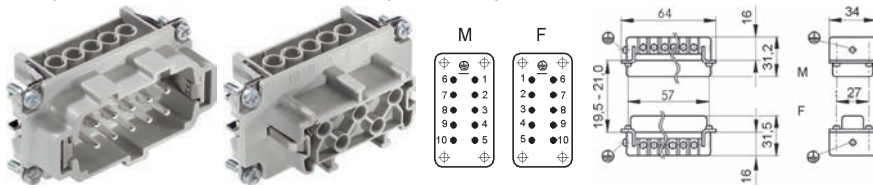
Article number	Article description	Contact type	Wire protection	Number of operating contacts	Pieces / PU
H-BE 6 screw termination					
10190000	EPIC® H-BE 6 SS	male	yes	1 - 6	10
10191000	EPIC® H-BE 6 BS	female	yes	1 - 6	10
10190100	EPIC® H-BE 6 SS	male		1 - 6	10
10191100	EPIC® H-BE 6 BS	female		1 - 6	10
H-BE 6 Push-In termination					
44423200	EPIC® H-BE 6 SP	male	yes	1 - 6	10
44423201	EPIC® H-BE 6 BP	female	yes	1 - 6	10

Photographs are not to scale and do not represent detailed images of the respective products.



EPIC® H-BE 10 Screw termination

The proven standard inserts for easy assembly



Info

- Proven screw for easy installation
- Railway applications

EPIC® H-BE 10 Push-In termination

The proven standard inserts for easy assembly



Info

- Push-In version - fast and easy tool free connection technology
- Railway applications

Suitable housing

- EPIC® ULTRA H-B 10
- EPIC® H-B 10 Housings
- EPIC® QUICK & EASY Mounting system
- Refer to Selection Table A10 to select the required inserts and housings

Benefits

EPIC® H-BE 10 Screw termination

- Standard inserts with screw, crimp cage clamp and Push-In termination
- The EPIC® H-BE series is suitable for applications that require a reliable connection when working with high voltages and currents
- Railway applications
 - Fire protection on railway vehicles: Test according EN 45545-2. Requirement sets R22 and R23. Hazard level HL1, HL2 and HL4

EPIC® H-BE 10 Push-In termination

- Insertion of cores with end sleeves in Push-In inserts gives mounting safety and time saving without any tools
- Easy dismantling and insertion of wires by pushing the orange button
- Test socket for standard 2mm test tip for easy testing of Push-In inserts
- Railway applications
 - Fire protection on railway vehicles: Test according EN 45545-2. Requirement sets R22 and R23. Hazard level HL1, HL2 and HL4
- The EPIC® H-BE series is suitable for applications that require a reliable connection when working with high voltages and currents

Technical data

	Classification ETIM 5.0 Class-ID: EC000438 ETIM 5.0 Class-Description: Contact insert for industrial connectors		Number of contacts 10 + PE
	Rated voltage (V) IEC: 500 VUL: 600 VCSA: 600 V		Termination methods EPIC® H-BE 10 Screw termination Screw termination: 0.5 - 2.5 mm ² EPIC® H-BE 10 Push-In termination Push-In termination: 0.14 - 2.5mm ²
	Rated impulse voltage 6 kV		Stripping length (mm) EPIC® H-BE 10 Screw termination 8 EPIC® H-BE 10 Push-In termination 10
	Rated current (A) EPIC® H-BE 10 Screw termination IEC: 16 A UL: 16 A CSA: 16 A EPIC® H-BE 10 Push-In termination IEC: 16 A UL: 13 A CSA: 13 A		Cycle of mechanical operation 100
	Degree of soiling 3		Certifications EPIC® H-BE 10 Screw termination Certified production control: VDE-REG. no.: B437 UL-tested: UL File Number: E75770 EPIC® H-BE 10 Push-In termination UL-tested: UL File Number: E75770
	Contact resistance < 2 mOhm		Temperature range -40°C to +100°C, short-term up to +125°C
	Contacts Copper alloy, hard silver-plated		

Application range

EPIC® H-BE 10 Screw termination

- Mechanical engineering
- Plastics industry
- Light & sound technology
- Railway applications / vehicle construction

EPIC® H-BE 10 Push-In termination

- Mechanical engineering
- Plastics industry
- Light & sound technology
- Railway applications / vehicle construction

Suitable tools

EPIC® H-BE 10 Screw termination

- PEW 8.186 crimping pliers refer to main catalogue
- Kraftform® adjustable torque screwdriver/ Kraftform Kompakt® Set refer to main catalogue
- Recommended crimping tool when conductor end-sleeves are used: PEW 8.186

Article number	Article description	Contact type	Wire protection	Number of operating contacts	Pieces / PU
H-BE 10 screw termination					
10192000	EPIC® H-BE 10 SS	male	yes	1 - 10	10
10193000	EPIC® H-BE 10 BS	female	yes	1 - 10	10
10192100	EPIC® H-BE 10 SS	male		1 - 10	10
10193100	EPIC® H-BE 10 BS	female		1 - 10	10
H-BE 10 Push-In termination					
44423202	EPIC® H-BE 10 SP	male	yes	1 - 10	10
44423203	EPIC® H-BE 10 BP	female	yes	1 - 10	10

Photographs are not to scale and do not represent detailed images of the respective products.



Info

- Proven screw for easy installation
- Also as EPIC® H-BE 32 available
- Railway applications

Info

- Push-In version - fast and easy tool free connection technology
- Also as EPIC® H-BE 32 available
- Railway applications

Suitable housing

- EPIC® ULTRA H-B 16
- EPIC® H-B 16 Housings
- EPIC® QUICK & EASY Mounting system
- Refer to Selection Table A10 to select the required inserts and housings

Similar products

EPIC® H-BE 16 Schraubanschluss

- Further products with higher numbering in the internet. (H-BE 32, H-BE 48)

Benefits

EPIC® H-BE 16 Screw termination

- Standard inserts with screw, crimp cage clamp and Push-In termination
- The EPIC® H-BE series is suitable for applications that require a reliable connection when working with high voltages and currents
- Railway applications
 - Fire protection on railway vehicles: Test according EN 45545-2. Requirement sets R22 and R23. Hazard level HL1, HL2 and HL4

EPIC® H-BE 16 Push-In termination

- Insertion of cores with end sleeves in Push-In inserts gives mounting safety and time saving without any tools
- Easy dismantling and insertion of wires by pushing the orange button
- Test socket for standard 2mm test tip for easy testing of Push-In inserts
- Railway applications
 - Fire protection on railway vehicles: Test according EN 45545-2. Requirement sets R22 and R23. Hazard level HL1, HL2 and HL4
- The EPIC® H-BE series is suitable for applications that require a reliable connection when working with high voltages and currents

EPIC® H-BE 16 Screw termination
The proven standard inserts for easy assembly

EPIC® H-BE 16 Push-In termination
The proven standard inserts for easy assembly

Technical data

Classification ETIM 5.0 Class-ID: EC000438 ETIM 5.0 Class-Description: Contact insert for industrial connectors	Number of contacts 16 + PE
Rated voltage (V) IEC: 500 VUL: 600 VCSA: 600 V	Termination methods EPIC® H-BE 16 Screw termination Screw termination: 0.5 - 2.5 mm ² EPIC® H-BE 16 Push-In termination Push-In termination: 0.14 - 2.5mm ²
Rated impulse voltage 6 kV	Stripping length (mm) EPIC® H-BE 16 Screw termination 8 EPIC® H-BE 16 Push-In termination 10
Rated current (A) EPIC® H-BE 16 Screw termination IEC: 16 A UL: 16 A CSA: 16 A EPIC® H-BE 16 Push-In termination IEC: 16 A UL: 13 A CSA: 13 A	Cycle of mechanical operation 100
Degree of soiling 3	Certifications EPIC® H-BE 16 Screw termination Certified production control: VDE-REG. no.: B437 UL-tested: UL File Number: E75770 EPIC® H-BE 16 Push-In termination UL-tested: UL File Number: E75770
Contact resistance < 2 mOhm	Temperature range -40°C to +100°C, short-term up to +125°C
Contacts Copper alloy, hard silver-plated	

Application range

EPIC® H-BE 16 Screw termination

- Mechanical engineering
- Plastics industry
- Light & sound technology
- Railway applications / vehicle construction

EPIC® H-BE 16 Push-In termination

- Mechanical engineering
- Plastics industry
- Light & sound technology
- Railway applications / vehicle construction

Suitable tools

EPIC® H-BE 16 Screw termination

- PEW 8.186 crimping pliers refer to main catalogue
- Kraftform® adjustable torque screwdriver/ Kraftform Kompakt® Set refer to main catalogue
- Recommended crimping tool when conductor end-sleeves are used: PEW 8.186

Similar products

EPIC® H-BE 16 Screw termination

- Further products with higher numbering in the internet. (H-BE 32, H-BE 48)

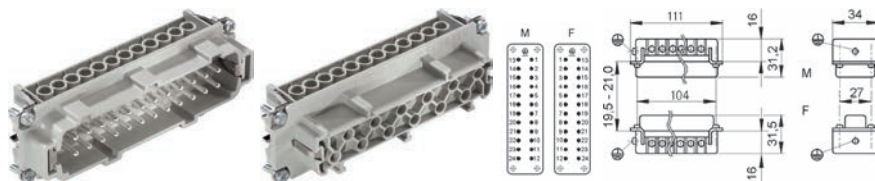
Article number	Article description	Contact type	Wire protection	Number of operating contacts	Pieces / PU
H-BE 16 screw termination					
10194000	EPIC® H-BE 16 SS	male	yes	1-16	5
10195000	EPIC® H-BE 16 BS	female	yes	1-16	5
10194100	EPIC® H-BE 16 SS	male		1-16	5
10195100	EPIC® H-BE 16 BS	female		1-16	5
H-BE 16 Push-In termination					
44423204	EPIC® H-BE 16 SP	male	yes	1-16	5
44423205	EPIC® H-BE 16 BP	female	yes	1-16	5

Photographs are not to scale and do not represent detailed images of the respective products.



EPIC® H-BE 24 Screw termination

The proven standard inserts for easy assembly

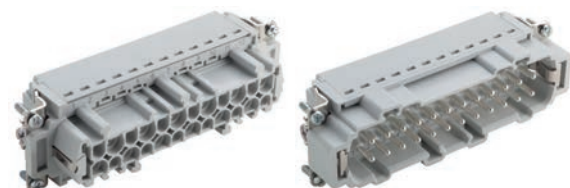


Info

- Proven screw for easy installation
- Also as EPIC® H-BE 48 available
- Railway applications

EPIC® H-BE 24 Push-In termination

The proven standard inserts for easy assembly



Info

- Push-In version - fast and easy tool free connection technology
- Also as EPIC® H-BE 48 available
- Railway applications

Suitable housing

- EPIC® ULTRA H-B 24
- EPIC® H-B 24 Housings
- EPIC® QUICK & EASY Mounting system
- Refer to Selection Table A10 to select the required inserts and housings

Similar products

EPIC® H-BE 24 Schraubanschluss

- Further products with higher numbering in the internet. (H-BE 32, H-BE 48)

Benefits

EPIC® H-BE 24 Screw termination

- Railway applications
 - Fire protection on railway vehicles: Test according EN 45545-2. Requirement sets R22 and R23. Hazard level HL1, HL2 and HL4
- Standard inserts with screw, crimp cage clamp and Push-In termination
- The EPIC® H-BE series is suitable for applications that require a reliable connection when working with high voltages and currents

EPIC® H-BE 24 Push-In termination

- Insertion of cores with end sleeves in Push-In inserts gives mounting safety and time saving without any tools
- Easy dismantling and insertion of wires by pushing the orange button
- Test socket for standard 2mm test tip for easy testing of Push-In inserts
- Railway applications
 - Fire protection on railway vehicles: Test according EN 45545-2. Requirement sets R22 and R23. Hazard level HL1, HL2 and HL4
- The EPIC® H-BE series is suitable for applications that require a reliable connection when working with high voltages and currents

Technical data

	Classification ETIM 5.0 Class-ID: EC000438 ETIM 5.0 Class-Description: Contact insert for industrial connectors
	Rated voltage (V) IEC: 500 VUL: 600 VCSA: 600 V
	Rated impulse voltage 6 kV
	Rated current (A) EPIC® H-BE 24 Screw termination IEC: 16 A UL: 16 A CSA: 16 A EPIC® H-BE 24 Push-In termination IEC: 16 A UL: 13 A CSA: 13 A
	Degree of soiling 3
	Contact resistance < 2 mOhm
	Contacts Copper alloy, hard silver-plated
	Number of contacts 24 + PE

	Termination methods EPIC® H-BE 24 Screw termination Screw termination: 0.5 - 2.5 mm ² EPIC® H-BE 24 Push-In termination Push-In termination: 0.14 - 2.5mm ²
	Stripping length (mm) EPIC® H-BE 24 Screw termination 8 EPIC® H-BE 24 Push-In termination 10
	Cycle of mechanical operation 100
	Certifications EPIC® H-BE 24 Screw termination Certified production control: VDE-REG. no.: B437 UL-tested: UL File Number: E75770 EPIC® H-BE 24 Push-In termination UL-tested: UL File Number: E75770
	Temperature range -40 °C to +100 °C, short-term up to +125 °C

Application range

EPIC® H-BE 24 Screw termination

- Mechanical engineering
- Plastics industry
- Light & sound technology
- Railway applications / vehicle construction

EPIC® H-BE 24 Push-In termination

- Mechanical engineering
- Plastics industry
- Light & sound technology
- Railway applications / vehicle construction

Similar products

EPIC® H-BE 24 Screw termination

- Further products with higher numbering in the internet. (H-BE 32, H-BE 48)

Suitable tools

EPIC® H-BE 24 Screw termination

- PEW 8.186 crimping pliers refer to main catalogue
- Kraftform® adjustable torque screwdriver/ Kraftform Kompakt® Set refer to main catalogue
- Recommended crimping tool when conductor end-sleeves are used: PEW 8.186

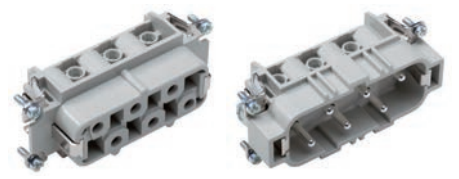
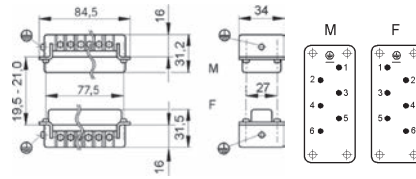
Article number	Article description	Contact type	Wire protection	Number of operating contacts	Pieces / PU
H-BE 24 screw termination					
10196000	EPIC® H-BE 24 SS	male	yes	1 - 24	5
10197000	EPIC® H-BE 24 BS	female	yes	1 - 24	5
10196100	EPIC® H-BE 24 SS	male		1 - 24	5
10197100	EPIC® H-BE 24 BS	female		1 - 24	5
H-BE 24 Push-In termination					
44423206	EPIC® H-BE 24 SP	male	yes	1 - 24	5
44423207	EPIC® H-BE 24 BP	female	yes	1 - 24	5

Photographs are not to scale and do not represent detailed images of the respective products.



Info

- Standard insert for currents up to 35A
- Railway applications

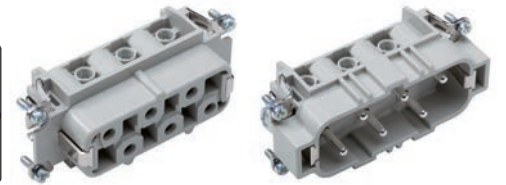
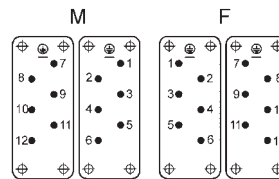


EPIC® H-BS 6

Inserts for high currents.

Info

- Standard insert for currents up to 35A
- Railway applications



EPIC® H-BS 12

Inserts for high currents.

Suitable housing

EPIC® H-BS 6

- EPIC® ULTRA H-B 16
- EPIC® H-B 16 Housings
- EPIC® QUICK & EASY Mounting system

EPIC® H-BS 12

- EPIC® ULTRA H-B 16
- Refer to Selection Table A10 to select the required inserts and housings

Benefits

EPIC® H-BS 6

- High rating for currents up to 35 A
- Screw termination up to a conductor cross section of 6 mm²
- Railway applications
 - Fire protection on railway vehicles: Test according EN 45545-2. Requirement sets R22 and R23. Hazard level HL1, HL2 and HL4

EPIC® H-BS 12

- High rating for currents up to 35 A
- Screw termination up to a conductor cross section of 6 mm²
- Two H-BS 6 inserts with different contact-numbering for one housing.

Technical data

<p>Classification ETIM 5.0 Class-ID: EC000438 ETIM 5.0 Class-Description: Contact insert for industrial connectors</p> <p>Rated voltage (V) IEC: 500 VUL: 600 VCSA: 600 V Conductor - conductor: 690 V</p> <p>Rated impulse voltage 6 kV</p> <p>Rated current (A) IEC: 35 A UL: 35 A CSA: 35 A</p> <p>Degree of soiling 3</p> <p>Contact resistance < 2 mOhm</p> <p>Contacts Copper alloy, hard silver-plated</p>	<p>Number of contacts EPIC® H-BS 6 6 + PE EPIC® H-BS 12 12 + PE</p> <p>Termination methods Screw termination: 0.5 - 6 mm²</p> <p>Stripping length (mm) 8</p> <p>Cycle of mechanical operation 100</p> <p>VDE-tested Certified production control: VDE-REG. no.: B437 UL-tested: UL File Number: E75770</p> <p>Temperature range -40°C to +100°C, short-term up to +125°C</p>
---	---

Application range

EPIC® H-BS 6

- Railway applications / vehicle construction
- Plant engineering
- Mechanical engineering
- Drive systems

EPIC® H-BS 12

- Plant engineering
- Mechanical engineering
- Drive systems

Suitable tools

EPIC® H-BS 6

- PEW 8.186 crimping pliers refer to main catalogue
- Kraftform® adjustable torque screwdriver/ Kraftform Kompakt® Set refer to main catalogue

EPIC® H-BS 12

- PEW 8.186 crimping pliers refer to main catalogue

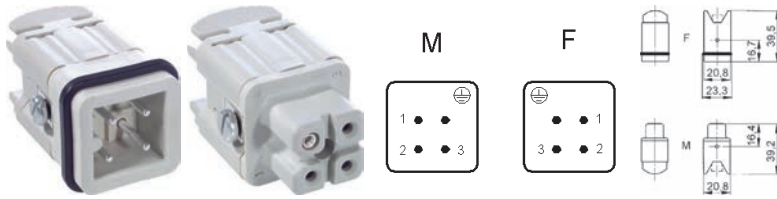
Article number	Article description	Contact type	Wire protection	Number of operating contacts	Pieces / PU
H-BS 6 screw termination					
10170000	H-BS 6 SS	male	yes	1 - 6	5
10171000	H-BS 6 BS	female	yes	1 - 6	5
H-BS 12 screw termination					
10170600	H-BS 6 SS	male	yes	7 - 12	5
10171600	H-BS 6 BS	female	yes	7 - 12	5

Photographs are not to scale and do not represent detailed images of the respective products.



EPIC® H-A 3

H-A inserts with screw termination up to 2.5 mm² wire cross section

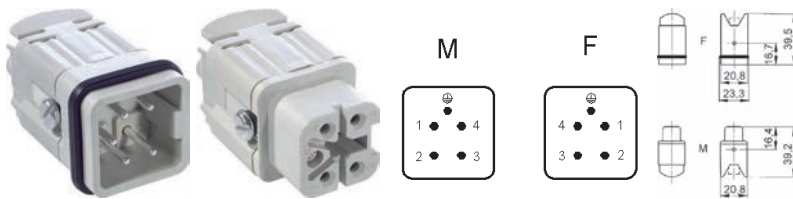


Info

- Small power connector for single- or three-phase current
- Easy to assemble due to straight entry of conductors
- Railway applications

EPIC® H-A 4

H-A inserts with screw termination up to 2.5 mm² wire cross section



Info

- Insert for three-phase current application with neutral conductor
- Easy to assemble due to straight entry of conductors
- Railway applications

Suitable housing

- EPIC® H-A 3 Housings
- Refer to Selection Table A10 to select the required inserts and housings

Benefits

- Railway applications
 - Fire protection on railway vehicles: Test according EN 45545-2. Requirement sets R22 and R23. Hazard level HL1, HL2 and HL4
- The small H-A 3 / H-A 4 are used whenever there is minimal space.
- Easy to service screw connection
- Easy cable connection with straight cable entry in the contacts

Application range

- Railway applications / vehicle construction
- Machine and equipment manufacturing
- Control engineering
- Apparatus construction

Suitable tools

- PEW 8.186 crimping pliers refer to main catalogue
- MULTICRIMP 6 crimping pliers refer to main catalogue
- Kraftform® adjustable torque screwdriver/ Kraftform Kompakt® Set refer to main catalogue

Technical data

	Classification ETIM 5.0 Class-ID: EC000438 ETIM 5.0 Class-Description: Contact insert for industrial connectors		Number of contacts EPIC® H-A 3 3 + PE EPIC® H-A 4 4 + PE
	Rated voltage (V) IEC: 400 V UL: 600 V CSA: 600 V		Termination methods Screw termination: 0.5 - 2.5 mm ² (2.5 mm ² with conductor end sleeves depending on the crimping profile)
	Rated impulse voltage 4 kV		Stripping length (mm) 6
	Rated current (A) IEC: 23 A UL: 10 A CSA: 10 A		Cycle of mechanical operation 100
	Degree of soiling 3		VDE-tested Certified production control: VDE-REG. no.: B437 UL-tested: UL File Number: E75770
	Contact resistance 1.5 - 4 mohm		Temperature range -40 °C to +100 °C, short-term up to +125 °C
	Contacts Copper alloy, hard silver-plated		

Article number	Article description	Contact type	Number of operating contacts	Pieces / PU
H-A 3 screw termination				
10420000	H-A 3 SS	male	1 - 3	10
10421000	H-A 3 BS	female	1 - 3	10
H-A 4 screw termination				
10431000	H-A 4 SS	male	1 - 4	10
10432000	H-A 4 BS	female	1 - 4	10

Photographs are not to scale and do not represent detailed images of the respective products.

ÖLFLEX®
 UNITRONIC®
 ETHERLINE®
 HITRONIC®
 EPIC®
 SKINTOP®
 SILVYN®
 FLEXIMARK®
 ACCESSORIES