

EPIC[®] DATA

M12 Connector



EPIC® DATA PROFIBUS M12 Connector

Switchable integrated terminating resistor

Metalized housing

Lapp Group supplements its product portfolio for Automation with a new EPIC® DATA M12 PROFIBUS connector. It was specially designed for the connection of PROFIBUS devices with SUB-D connector to a harnessed PROFIBUS cable and offers several features:

Installation times are reduced to about 30 second compared to previous harnessing times of 3 up to 10 minutes. Reason: Complex unscrewing of the connector and

harnessing of the cable are no longer necessary. The ready made M12 PROFIBUS cable has just to be inserted and hand screwed. With this method connection errors belong to the past.

The new EPIC® DATA M12 PROFIBUS connector is available in 2 variants with a 90° cable outlet. The connector provides two M12-connectors and an integrated switchable terminating resistor. A metalized housing protects against electromagnetically interference.

Benefits M12

- Suitable for harnessed M12 PB cables
- Integrated switchable terminating resistor
- Metalized housing
- Cost-saving due to quick installation
- Dimensions 70mmx40mmx17mm
- Operating temperature 0 °C up to +60 °C



Our item designation: How it works

ED stands for EPIC® Data

PB stands for PROFIBUS

90 stands for 90° cable outlet

PG stands for Programming/Diagnostic interface

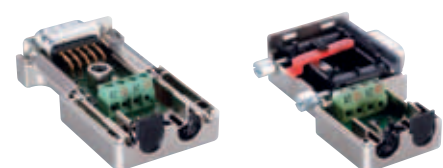
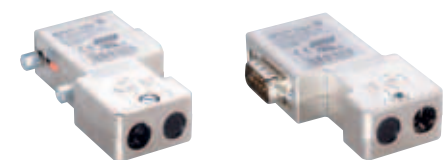
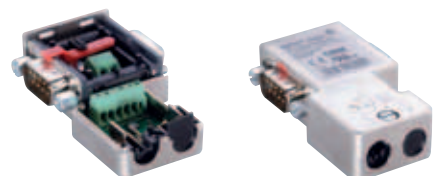
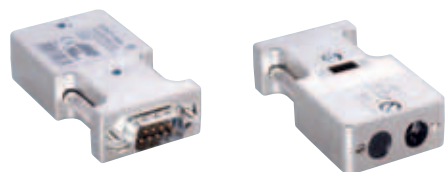
M12 stands for 5-pin connector, M 12 B-coded

| Article No | Lapp designation |
|------------|------------------|
| 21700521 | ED-PB-90-M12 |
| 21700520 | ED-PB-90-PG-M12 |

Approvals



Our product range



| Article No | Lapp designation | Remark |
|------------|-------------------------|---|
| | | Screw terminals, integrated terminating resistor |
| 21700504 | ED-PB-90 | 90° cable outlet |
| 21700503 | ED-PB-90-PG | 90° cable outlet, with programming interface |
| 21700530 | ED-PB-90-LED | 90° cable outlet, Status LED |
| 21700529 | ED-PB-90-PG-LED | 90° cable outlet, with programming interface, Status LED |
| 21700507 | ED-PB-35 | 35° cable outlet |
| 21700506 | ED-PB-35-PG | 35° cable outlet, with programming interface |
| 21700505 | ED-PB-AX | 180° cable outlet |
| | | Spring Type, integrated terminating resistor |
| 21700509 | ED-PB-90-ST | 90° cable outlet, solid core |
| 21700508 | ED-PB-90-PG-ST | 90° cable outlet, with programming interface |
| | | (FC) Fast Connect, integrated terminating resistor |
| 21700502 | ED-PB-90-FC | 90° cable outlet, FC, solid core |
| 21700501 | ED-PB-90-PG-FC | 90° cable outlet, with programming interface, FC, solid core |
| 21700528 | ED-PB-90-FC-FLEX | 90° cable outlet, FC, flexible + highflexible |
| 21700527 | ED-PB-90-PG-FC-FLEX | 90° cable outlet, with programming interface, FC, flexible + highflexible |
| 21700547 | ED-PB-90-LED-FC | 90° cable outlet, Status LED, FC, solid core |
| 21700546 | ED-PB-90-PG-LED-FC | 90° cable outlet, with programming interface, Status LED, FC, solid core |
| 21700549 | ED-PB-90-LED-FC-FLEX | 90° cable outlet, Status LED, FC, flexible + highflexible |
| 21700539 | ED-PB-90-PG-LED-FC-FLEX | 90° cable outlet, with programming interface, Status LED, FC, flexible + highflexible |
| 21700511 | ED-PB-35-FC | 35° cable outlet, FC, solid core |
| 21700513 | ED-PB-35-PG-FC | 35° cable outlet, with programming interface, FC, solid core |
| 21700514 | ED-PB-35-FC-FLEX | 35° cable outlet, FC, flexible + highflexible |
| 21700515 | ED-PB-35-PG-FC-FLEX | 35° cable outlet, with programming interface, FC, flexible + highflexible |
| 21700544 | ED-PB-AX-FC | 180° cable outlet, FC, solid core |
| 21700545 | ED-PB-AX-FC-FLEX | 180° cable outlet, with programming interface, FC, solid core |
| | | ATEX (EX Zone 2), integrated terminating resistor |
| 21700543 | ED-PB-90-ATEX | 90° cable outlet, ATEX |
| 21700542 | ED-PB-90-PG-ATEX | 90° cable outlet, programming interface, ATEX |
| | | M12 connectors |
| 21700521 | ED-PB-90-M12 | 90° cable outlet |
| 21700520 | ED-PB-90-PG-M12 | 90° cable outlet, with programming interface |
| | | REPEATER for bus extension |
| 21700541 | ED-PB-90-RP-PG | 90° cable outlet, repeater, with programming interface |
| | | CANopen |
| 21700537 | ED-CAN-90 | 90° cable outlet |
| 21700536 | ED-CAN-90-PG | 90° cable outlet, with programming interface |
| 21700538 | ED-CAN-AX | 180° cable outlet |

ÖLFLEX®

UNITRONIC®

ETHERLINE®

HITRONIC®

EPIC®

SKINTOP®

SILVYN®

FLEXIMARK®



 **LAPP GROUP**

www.lappgroup.com

To contact your local Lapp Group representative
please visit www.lappgroup.com/worldwide

Terms of Trade:

Our general conditions of sale
can be downloaded from our website
www.lappgroup.com/terms