



# MPGAMMA

STEEL FACTOR

[www.mpgamma.com](http://www.mpgamma.com)

## PUSH-BUTTON PANELS



# PUSH-BUTTON PANELS



## SPN SERIES

Watertight boxes in AISI 304L (1.4301) complete of:

- Body with welded and finished corners.
- Cover with welded and finished corners and screwed to the box body.
- Diam. 22,5mm Drillings on the cover for push-button panel mounting.
- Polyurethane sealing gasket with robotized application.
- M4 S/S leak-proof cover-body's clamping screws.
- M5x15 stainless steel inner threaded stud bolts for earthing on the cover.
- M5 inner threaded spacers on the body for wiring plate or DIN bar fixing.
- Fine satin external finishing medium scotch Brite type.
- Sheet metal thickness of body and cover between 10/10mm and 12/10mm depending on box dimensions.
- Rear prearrangement for wall fixing with M5 blind threaded holes.
- **Protection degree IP 66 IP67 IP69K IK10 certified by TUV in accordance with EN62208** (in combination with equipments with equivalent certification).
- Protection degree Type 1, 12, 4, 4X (cULus mark) in accordance with UL50, 508A, 746C and CSA 22,2 no. 14,94 (on demand) boxes.
- Suitable for using in potentially explosive atmosphere (Group -II-, Category-3-, Zone-22,2-) with the application of the accessory KIT-ATEX-SPN-2-22. (in combination with equipments with equivalent certification).

Item	External dimensions			Wiring plate		Features		
	W	H	D	X	Y	Closing points No.	No. Holes for wall fixing	Holes
<b>SPN997</b>	90	90	75	-	-	2	2	1
<b>SPN10109</b>	100	100	90	-	-	4	2	1
<b>SPN10169</b>	100	160	90	70	135	4	2	2
<b>SPN10229</b>	100	220	90	70	195	4	2	3
<b>SPN151612</b>	150	160	120	120	135	4	2	4
<b>SPN152212</b>	150	220	120	120	195	4	2	6

## ACCESSORIES FOR SPN SERIES

- Galvanized mounting plate 20/10 thin part no. PDFN.
- Standard wall fixing kit part no. CASDN013 composed by no. 02 brackets and stainless steel screws.
- ATEX-SPN-2-22 kit for using in potentially explosive atmosphere (Group- II-, Category-3-, Zone-22,2-).
- Body and door drilling on drawing.
- Conductive or silicone seals resistant from -50°C to +120°C.
- Special dimensions.
- Made of AISI 316L or other special steels.
- cULus mark as per UL50, 508A, 746C and CSA 22,22 no. 14,94 (on demand).



IP66 Wall fixing kit



Mounting plate



#### Certifications and marks



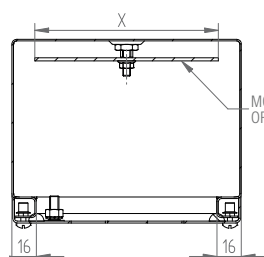
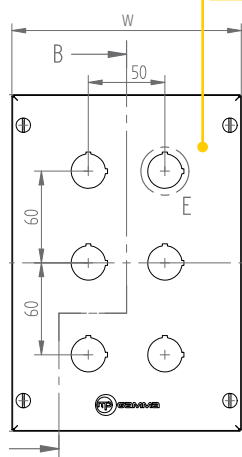
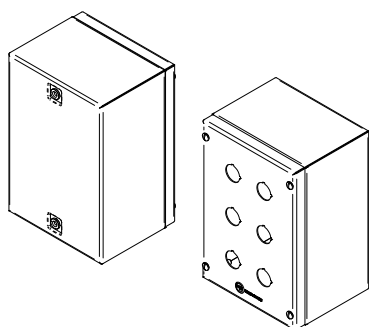
TYPE 1, 12, 4, 4X

IP66-IK10  
IP67-IK10  
IP69K-IK10

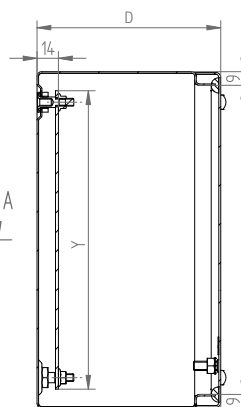
#### Material

AISI 304L (WNR 1.4307)

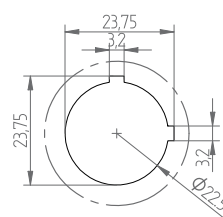
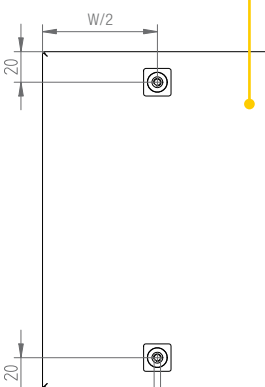
AISI 316L (WNR 1.4404) on demand



SECTION A-A



SECTION B-B



DETAIL E

1. Front View.
2. Rear View.



## BOXES ACCESSORIES



### GAS SPRINGS KIT “CPN” AND “CLN” SERIES

Gas springs Kit provided with screw and accessories for the mounting of various strengths and dimensions.

They can be mounted on CPN series, on some models of CLN boxes and for special applications.

It is recommended to carry out the assembly in the factory and always to inform our technical department about the types and methods of use and application.

Item	Description
ACC070_100_C_CPN	KIT OF A PAIR OF SHORT GAS SPRINGS F=100N EACH WITH ACCESSORIES AND ASSEMBLY
ACC070_200_C_CPN	KIT OF A PAIR OF SHORT GAS SPRINGS F=200N EACH WITH ACCESSORIES AND ASSEMBLY
ACC070_300_C_CPN	KIT OF A PAIR OF SHORT GAS SPRINGS F=300N EACH WITH ACCESSORIES AND ASSEMBLY
ACC070_400_C_CPN	KIT OF A PAIR OF SHORT GAS SPRINGS F=400N EACH WITH ACCESSORIES AND ASSEMBLY
ACC070_200_L_CPN	KIT OF A PAIR OF LONG GAS SPRINGS F=200N EACH WITH ACCESSORIES AND ASSEMBLY
ACC070_300_L_CPN	KIT OF A PAIR OF LONG GAS SPRINGS F=300N EACH WITH ACCESSORIES AND ASSEMBLY
ACC070_400_L_CPN	KIT OF A PAIR OF LONG GAS SPRINGS F=400N EACH WITH ACCESSORIES AND ASSEMBLY
ACC070_600_L_CPN	KIT OF A PAIR OF LONG GAS SPRINGS F=600N EACH WITH ACCESSORIES AND ASSEMBLY



### MOUNTING PLATE FOR JUNCTION BOXES “SDN” AND PUSH BUTTON PANELS “SPN” (OPTIONAL)

Galvanized mounting plate for standard SDN series junction boxes and SPN series control panels.

For features and dimensions see drawings on pages. 15-17 in the sections dedicated to SDN series boxes and SPN series pushbuttons.

Item	Description
PDFN1016	MOUNTING PLATE 100X160
PDFN1022	MOUNTING PLATE 100X220
PDFN1516	MOUNTING PLATE 150X160
PDFN1522	MOUNTING PLATE 150X220
PDFN1528	MOUNTING PLATE 150X280
PDFN2022	MOUNTING PLATE 200X220
PDFN2028	MOUNTING PLATE 200X280
PDFN2528	MOUNTING PLATE 250X280
PDFN2534	MOUNTING PLATE 250X340
PDFN3034	MOUNTING PLATE 300X340
PDFN3040	MOUNTING PLATE 300X400
PDFN4040	MOUNTING PLATE 400X400

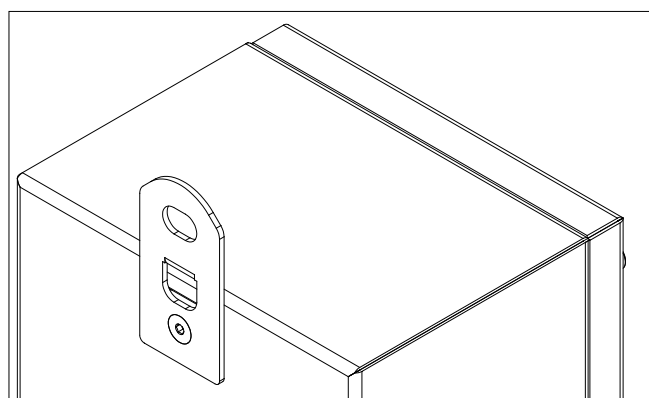
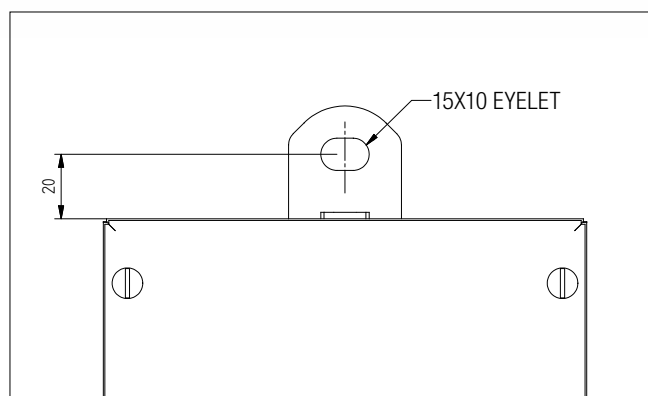


## WALL MOUNTING KIT FOR IP66 “SDN” AND “SPN” BOXES SERIES

Standard SDN and SPN series have drillings on the rear panel for wall mounting, this to facilitate the installation and thanks to an innovative system, the aesthetics and the protection degree remain unchanged.

For boxes and wall push-button wall mounting it is necessary to use the CASDN013 item consisting of two flat brackets and stainless steel screws.

The CASDN013 kit is suitable for all sizes of SDN and SPN, except for SDN303415 and SDN304015 models for which No. 4 wall mounting brackets are needed, so you need to order n° 2 pieces of the CASDN013 item.



BOX REAR DETAIL WITH BRACKET