
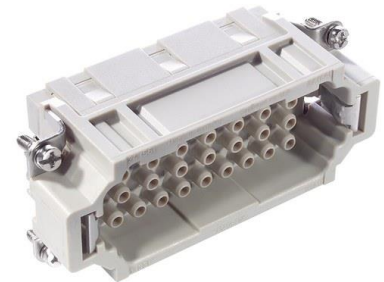


10184400	DATA SHEET	
Valid from: 03.07.2024	EPIC® H-EE 32 SC / H-EE 32 BC	

Description

- H-EE inserts with high contact density based on the proven H-BE series.
- The H-EE inserts with machined contacts for a high number of pins in very tight spaces.
- For assembly in H-B housing



General Characteristics

Series	H-EE 32 machined
Version	Male (Article 10184400)/Female(Article 10185400)
Number of Contacts	32 + PE
Termination Methods	Crimp termination: 0.5 – 4.0 mm ²
Temperature Range	-40°C to +100°C, short-term up to +125°C

Mechanical Characteristics

Cycle of mechanical operation	100
-------------------------------	-----

Electrical Characteristics

Rated Voltage, IEC	500 V
Rated Voltage, UL	600 V
Rated Voltage, CSA	600 V
Rated Impulse Voltage	6 kV
Rated Current, IEC	16 A
Rated Current, UL	16 A
Rated Current, CSA	16 A
Contact Resistance	< 2 mOhm
Degree of Soiling	3

Materials and Surfaces

Contacts	Copper alloy, hard silver/gold-plated
Insulating Body	PC
Flammability Class according to UL 94	V0


Approvals

UL-Approval, E-File-Number	E75770
----------------------------	--------

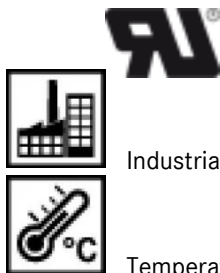
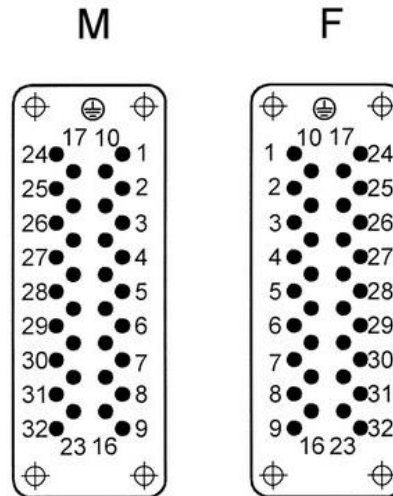
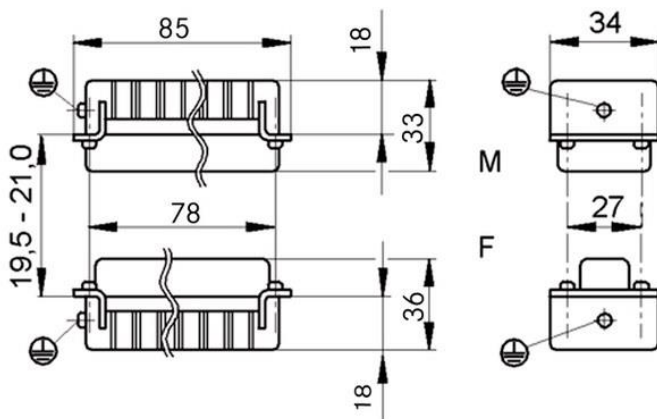
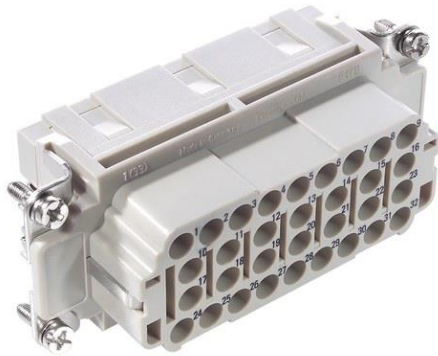
Standard

Safety Standard	IEC 61984, UL 1977
-----------------	--------------------

Creator: MANA2/PDP Released: IVSE1/PDP	Document: DB10184400EN Version: 03	Page 1 of 2
---	---------------------------------------	-------------

10184400	DATA SHEET	
Valid from: 03.07.2024	EPIC® H-EE 32 SC / H-EE 32 BC	

Technical Drawings



Industrial machinery and plant engineering

Temperature-resistant

Info

Inserts with high contact density for medium power
Also as EPIC® H-EE 64 available

Application range

Mechanical engineering
Plant engineering

Remark

Photographs are not to scale and do not represent detailed images of the respective products.

Creator: MANA2/PDP Released: IVSE1/PDP	Document: DB10184400EN Version: 03	Page 2 of 2
---	---------------------------------------	-------------