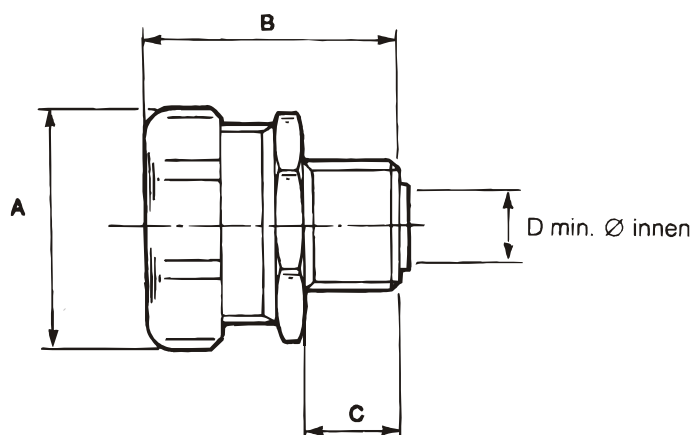


52004329	DATA SHEET	
Valid from: 09.07.2018	SILVYN® FDG	



Technical data:

nominal width	connection-thread	A mm	B mm	C mm	D mm	Part No.
1/4'	PG 9	21	36	12	6,0	
5/16'	PG 9	26	36	12	10,0	
3/8'	PG 11	29	40	14	11,0	
3/8'	PG 13,5	29	40	14	11,0	
1/2'	PG 16	35	41	14	14,5	
3/4'	PG 21	42	43	14	20,0	
1'	PG 29	47	56	19	25,0	
1 1/4'	PG 36	58	67	21	33,5	
1 1/2'	PG 42	69	72	21	38,5	
2'	PG 48	83	81	21	49,5	
1/4'	NPT 1/4'	21	35	12	6,0	
5/16'	NPT 3/8'	25	35	12	12,0	
3/8'	NPT 1/2'	29	38	14	11,0	
1/2'	NPT 1/2'	35	40	14	14,5	
3/4'	NPT 3/4'	42	41	14	20,0	
1'	NPT 1'	48	52	19	25,0	
1 1/4'	NPT 1 1/4'	58	64	21	33,5	
1 1/2'	NPT 1 1/2'	69	68	21	38,5	
2'	NPT 2'	83	78	22	49,5	
2 1/2'	NPT 2 1/2'	95	105	25	61,0	
3'	NPT 3'	114	108	25	75,0	
4'	NPT 4'	140	114	29	99,0	

52004329	DATA SHEET	
Valid from: 09.07.2018	SILVYN® FDG	

Material:

body: cast iron, surface elektrogalvanised and chromated
strain relief and earthing sleeve: steel
sealing: nylon
connection piece: nylon insulated inside

Features:

in combination with SILVYN® EF, OR, HTDL, HCX, HFX conduit, this easy-to- assemble conduit connector forms a unit that is impervious to liquids and ensures continuous earthing in accordance with VDE 0113/12.73.
If waterproof assembly (IP 67) is stipulated, there must be used an additional sealing- ring (O-Ring) between the connector and housing

Approval:


For more information please see our current catalogue. Please do not hesitate to contact our laboratory if there are any questions regarding resistance against aggressive agents and special oil.

Creator: M. Schmid /PDP Released: DAMU1/PDP	Document: DB52004329EN Version: 01	Page 2 of 2
--	---------------------------------------	-------------