
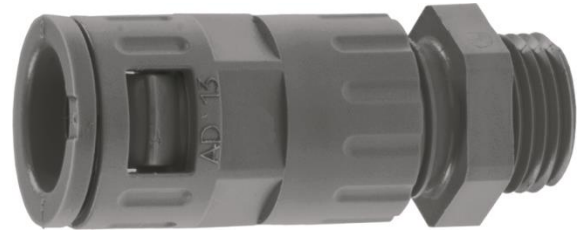


| | | |
|---------------------------|----------------------------|---|
| 5550 0800 | DATA SHEET |  |
| Valid from: 03.07.2018 | SILVYN® KLICK GPZ-M | |

SILVYN® KLICK GPZ-M is a one piece polyamide cable conduit gland, with the double function sealing and strain relief, for corrugated conduits and cables. By the push-in-lock is the assembling simple, the dismounting takes place by moving the lock sleeve. SILVYN® KLICK GPZ-M can used in the statically and dynamically machine and plant constructions, where cables and lines need an extra strain relief and sealing.



Material:

Body Polyamide
Sealing TPE

Technical Features:

Connecting thread M12x1,5 up to M63x1,5 acc. to EN 60423
Nominal wide NW 10 up to NW 54,5
Protection class IP68 acc. to EN 60529
IP69K acc. to DIN 40050 T9
Depending on the used conduit
Temperature range -40°C up to +120°C

Additional features:

Fire classification V2 acc. to UL94
Flammability lass S1 acc. to DIN 5510-2
Fire behaviour HL2 acc. to EN 45545-2
Free of halogen und phosphor
UV-Resistant
SILVYN® KLICK GPZ-M black

Colour:

Grey
Black

Approbation:




Reference standards:

EN 61386-1

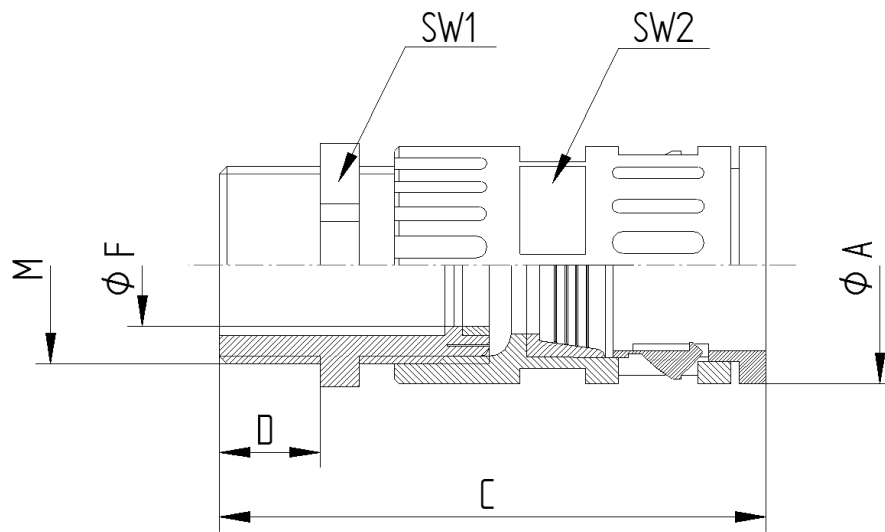
Suitable conduits:

SILVYN® RILL PA 6
SILVYN® RILL PA 12

| | | |
|--|---------------------------------------|-------------|
| Creator: MAU1/PDP Released: DAMU1/PDP | Document: DB55500800EN Version: 05 | Page 1 of 2 |
|--|---------------------------------------|-------------|

| | | |
|---------------------------|----------------------------|---|
| 5550 0800 | DATA SHEET |  |
| Valid from: 03.07.2018 | SILVYN® KLICK GPZ-M | |

Product drawing:



Dimension table:

| Part No. | Nominal width NW | Thread M | Thread length D mm | Length C mm | Clamping range ØF mm | Outer diameter Ø A mm | SW 1 | SW 2 | Weight kg/100 |
|---------------------------------|------------------|----------|--------------------|-------------|----------------------|-----------------------|------|------|---------------|
| SILVYN KLICK GPZ-M grey | | | | | | | | | |
| 5550 0800 | 10 | M12x1,5 | 8,0 | 51 | 3,0 – 6,5 | 17,0 | 16 | 15 | 0,8 |
| 5550 0810 | 13 | M16x1,5 | 8,0 | 53 | 5,0 – 9,5 | 20,0 | 18 | 20 | 1,3 |
| 5550 0820 | 15,8 | M20x1,5 | 8,0 | 59 | 8,0 – 13,0 | 23,0 | 21 | 24 | 1,5 |
| 5550 0830 | 21,2 | M25x1,5 | 8,0 | 70 | 11,0 – 17,0 | 33,5 | 7 | 29 | 3,0 |
| 5550 0840 | 28,5 | M32x1,5 | 10,0 | 82 | 15,0 – 21,0 | 37,0 | 34 | 36 | 3,8 |
| 5550 0850 | 34,5 | M40x1,5 | 10,0 | 85 | 19,0 – 28,0 | 44,0 | 40 | 46 | 5,7 |
| 5550 0860 | 42,5 | M50x1,5 | 12,0 | 141 | 27,0 – 35,0 | 58,0 | 55 | 55 | 11,2 |
| 5550 0870 | 54,5 | M63x1,5 | 12,0 | 145 | 32,0 – 42,0 | 68,0 | 65 | 68 | 13,2 |
| SILVYN KLICK GPZ-M black | | | | | | | | | |
| 5550 0805 | 10 | M12x1,5 | 8,0 | 51 | 3,0 – 6,5 | 17,0 | 16 | 15 | 0,8 |
| 5550 0815 | 13 | M16x1,5 | 8,0 | 53 | 5,0 – 9,5 | 20,0 | 18 | 20 | 1,3 |
| 5550 0825 | 15,8 | M20x1,5 | 8,0 | 59 | 8,0 – 13,0 | 23,0 | 21 | 24 | 1,5 |
| 5550 0835 | 21,2 | M25x1,5 | 8,0 | 70 | 11,0 – 17,0 | 33,5 | 7 | 29 | 3,0 |
| 5550 0845 | 28,5 | M32x1,5 | 10,0 | 82 | 15,0 – 21,0 | 37,0 | 34 | 36 | 3,8 |
| 5550 0855 | 34,5 | M40x1,5 | 10,0 | 85 | 19,0 – 28,0 | 44,0 | 40 | 46 | 5,7 |
| 5550 0865 | 42,5 | M50x1,5 | 12,0 | 141 | 27,0 – 35,0 | 58,0 | 55 | 55 | 11,2 |
| 5550 0875 | 54,5 | M63x1,5 | 12,0 | 145 | 32,0 – 42,0 | 68,0 | 65 | 68 | 13,2 |

For more information please see our current catalogue. Please do not hesitate to contact our laboratory if there are any questions regarding resistance against aggressive agents and special oil.

| | | |
|--|---------------------------------------|-------------|
| Creator: MAU1/PDP Released: DAMU1/PDP | Document: DB55500800EN Version: 05 | Page 2 of 2 |
|--|---------------------------------------|-------------|