

5550 1000	<b>DATA SHEET</b>	
Valid from: 24.04.2018	<b>SILVYN® KLICK-M</b>	

SILVYN® KLICK-M is a straight, one piece conduit gland with push-in closure for quick secure assembly. Dismantle by sliding the locking sleeve. The gland is suitable for conduit type SILVYN® RILL. The SILVYN® KLICK-M can be used in machine and plant constructions and in isolated electrical installations.



**Material:**

Body	Polyamide
Snap-in sleeve	Polyamide
Sealing	TPE
Flat sealing	TPE

**Technical Features:**

Connecting thread	M10x1,0 up to M63x1,5 acc. to EN 60423
Nominal wide	NW 10 up to NW 54
Protection class	IP68 acc. to EN 60529 IP69 acc. to DIN 40050 T9 Depending on the used conduit
Temperature range	-40°C up to +115°C

**Additional features:**

Fire classification	V0 acc. to UL94
Fire hazardous level	H2 acc. to EN 45545-2
Oxygen index	>30% acc. to EN ISO 4589-2
Free of silicone, cadmium, halogen and phosphorus	
UV-Resistant	only SILVYN® KLICK-M black

**Color:**

Black  
Grey

**Approbation:**



File No. E308201

**Reference standards:**



IEC 61386-23

**Suitable conduits:**

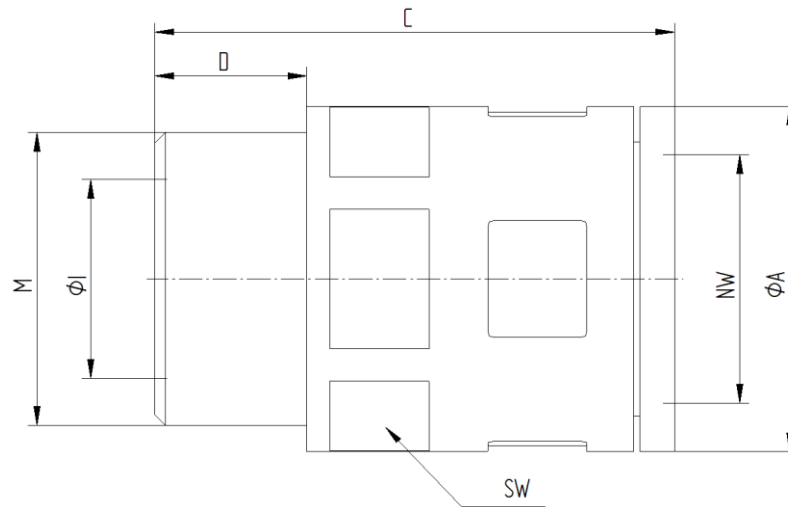
SILVYN® RILL

For more information please see our current catalogue. Please do not hesitate to contact our laboratory if there are any questions regarding resistance against aggressive agents and special oil.

Creator: MAU1/PDP Released: DAMU1/PDP	Document: DB55501000EN Version: 06	Page 1 of 2
--	---------------------------------------	-------------

5550 1000	<b>DATA SHEET</b>	
Valid from: 24.04.2018	<b>SILVYN® KLICK-M</b>	

**Product drawing:**



**Dimension table:**

Part No.	NW	Thread	Thread-length mm	Length mm	Inner Diameter mm	Outer Diameter mm	SW	Weight g
<b>SILVYN® KLICK-M Grey</b>								
5550 1000	10	M10x1,0	11,5	34,5	6,0	17,0	16	4
5550 1010	13	M12x1,5	12,0	37,0	7,0	20,0	18	4,5
5550 1020	13	M16x1,5	11,5	37,0	10,0	20,0	18	5
5550 1030	16	M16x1,5	11,5	39,0	11,0	23,0	21	6
5550 1040	16	M20x1,5	13,0	39,0	12,0	25,0	21	8
5550 1050	21	M20x1,5	13,0	44,5	16,0	29,5	27	10
5550 1060	28	M25x1,5	13,0	47,0	20,5	37,0	34	14
5550 1070	34	M32x1,5	15,0	51,0	25,5	44,0	40	22
5550 1080	42	M40x1,5	17,0	76,0	32,0	58,0	55	45
5550 1090	54	M50x1,5	17,0	88,0	42,5	68,0	65	72
5550 0990	54	M63x1,5	17,0	88,0	49,0	74,0	70	85
<b>SILVYN® KLICK-M Black</b>								
5550 1005	10	M10x1,0	11,5	34,5	6,0	17,0	16	4
5550 1015	13	M12x1,5	12,0	37,0	7,0	20,0	18	4,5
5550 1025	13	M16x1,5	11,5	37,0	10,0	20,0	18	5
5550 1035	16	M16x1,5	11,5	39,0	11,0	23,0	21	6
5550 1045	16	M20x1,5	13,0	39,0	12,0	25,0	21	8
5550 1055	21	M20x1,5	13,0	44,5	16,0	29,5	27	10
5550 1065	28	M25x1,5	13,0	47,0	20,5	37,0	34	14
5550 1075	34	M32x1,5	15,0	51,0	25,5	44,0	40	22
5550 1085	42	M40x1,5	17,0	76,0	32,0	58,0	55	45
5550 1095	54	M50x1,5	17,0	88,0	42,5	68,0	65	72
5550 0995	54	M63x1,5	17,0	88,0	49,0	74,0	70	85