


55501110	DATA SHEET	
Valid from: 03.07.2018	SILVYN® KLICK 90° M	

SILVYN® KLICK 90° M is a conduit gland with push-in closure for quick secure assembly. Dismounting by displacing the snap-in sleeve. The gland is suitable for conduit type SILVYN® RILL.
The SILVYN® KLICK-M can be used in machine and plant constructions and in isolated electrical installations.



Material: Body – PA
Seal – TPE

Features: Push-In-lock
For coarse and fine profile conduits
Simple dismounting
High mechanical stress

Resistance: To fuels, mineral oil, fat, alkalizes, glycols, acids, bases and common solvents

Temperature range: -40°C up to +115°C

Colour: Grey
Black (UV-Resistance)

Norm reference:






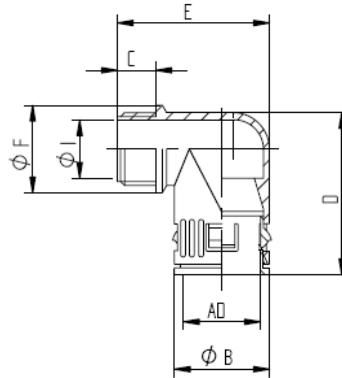
 UL FILENUMBER E308201

Note: Self-extinguishing HB acc. to UL94
Free of halogen, silicon and cadmium

Protection class: IP 68 acc. to EN 60529
IP 69 K Type-tested by VDE acc. to DIN 40050 T.9

Creator: M. Wegerer /PDP Released: DAMU1/PDP	Document: DB55501110EN Version: 03	Page 1 of 2
-------------------------------------------------	---------------------------------------	-------------

55501110	DATA SHEET	
Valid from: 03.07.2018	SILVYN® KLICK 90° M	



Dimension table:

Part No.	Part name	Thread	Conduit Ø AD mm	Clear opening Ø I mm	Outer Ø F mm	Outer Ø B mm	Length D mm	Length E mm	Thread length C mm
Grey									
5550 1110	SILVYN® KLICK 90° M	M10x1,0	10	6	16	17	33,5	34,5	12
5550 1120	SILVYN® KLICK 90° M	M12x1,5	13	8	20	20	36	34	10
5550 1130	SILVYN® KLICK 90° M	M16x1,5/1	13	12	20	20	36	36,5	12
5550 1140	SILVYN® KLICK 90° M	M16x1,5/2	16	12	24,5	23	42	40,5	12
5550 1150	SILVYN® KLICK 90° M	M20x1,5/1	16	15,5	24,5	23	42	41,5	13
5550 1160	SILVYN® KLICK 90° M	M20x1,5/2	21	14,8	27	29,5	50	49	13
5550 1170	SILVYN® KLICK 90° M	M25x1,5/1	21	18	29,5	29,5	50	49	13
5550 1180	SILVYN® KLICK 90° M	M25x1,5/2	28	18	34	37	57	57	13
5550 1190	SILVYN® KLICK 90° M	M32x1,5/1	28	24	37	37	57	59	15
5550 1200	SILVYN® KLICK 90° M	M32x1,5/2	34	24	43	44	67,5	65	15
5550 1210	SILVYN® KLICK 90° M	M40x1,5/1	34	32	45	44	67,5	67	15
5550 1220	SILVYN® KLICK 90° M	M40x1,5/2	42	32	51,5	52	83	72	15
5550 1230	SILVYN® KLICK 90° M	M50x1,5/1	42	39	55	52	83	74,5	15,5
5550 1240	SILVYN® KLICK 90° M	M50x1,5/2	54	39	64	64	94	84	15
5550 1250	SILVYN® KLICK 90° M	M63x1,5	54	53	68	64	94	85,5	16
Black									
5550 1115	SILVYN® KLICK 90° M	M10x1,0	10	6	16	17	33,5	34,5	12
5550 1125	SILVYN® KLICK 90° M	M12x1,5	13	8	20	20	36	34	10
5550 1135	SILVYN® KLICK 90° M	M16x1,5/1	13	12	20	20	36	36,5	12
5550 1145	SILVYN® KLICK 90° M	M16x1,5/2	16	12	24,5	23	42	40,5	12
5550 1155	SILVYN® KLICK 90° M	M20x1,5/1	16	15,5	24,5	23	42	41,5	13
5550 1165	SILVYN® KLICK 90° M	M20x1,5/2	21	14,8	27	29,5	50	49	13
5550 1175	SILVYN® KLICK 90° M	M25x1,5/1	21	18	29,5	29,5	50	49	13
5550 1185	SILVYN® KLICK 90° M	M25x1,5/2	28	18	34	37	57	57	13
5550 1195	SILVYN® KLICK 90° M	M32x1,5/1	28	24	37	37	57	59	15
5550 1205	SILVYN® KLICK 90° M	M32x1,5/2	34	24	43	44	67,5	65	15
5550 1215	SILVYN® KLICK 90° M	M40x1,5/1	34	32	45	44	67,5	67	15
5550 1225	SILVYN® KLICK 90° M	M40x1,5/2	42	32	51,5	52	83	72	15
5550 1235	SILVYN® KLICK 90° M	M50x1,5/1	42	39	55	52	83	74,5	15,5
5550 1245	SILVYN® KLICK 90° M	M50x1,5/2	54	39	64	64	94	84	15
5550 1255	SILVYN® KLICK 90° M	M63x1,5	54	53	68	64	94	85,5	16

For more information please see our current catalogue. Please do not hesitate to contact our laboratory if there are any questions regarding resistance against aggressive agents and special oil.

Creator: M. Wegerer /PDP Released: DAMU1/PDP	Document: DB55501110EN Version: 03	Page 2 of 2
-------------------------------------------------	---------------------------------------	-------------