

61802350	DATA SHEET	
Valid from: 03.07.2018	SILVYN[®] SAT	

SILVYN[®] SAT is a plain hole connector that covers the end of the conduit. It provides smooth bore exit and thus ensures cables do not get damaged.



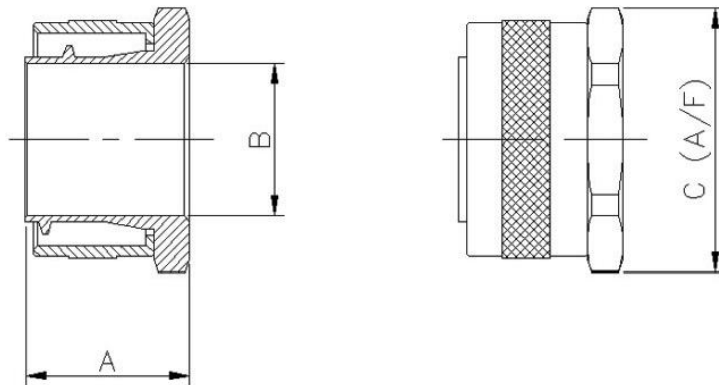
Material: Nickel-plated brass

Temperature range: -50°C to +300°C

Colour: Self colour

Resistance: Oil resistant
Corrosion resistant

Protection rate: IP 54



Dimension table:

Article number	Article Designation	Panel Hole Diameter (mm)	Dimensions		
			A	B	C
61802350	SILVYN [®] SAT 10	9	15.0	5.6	13.0
61802351	SILVYN [®] SAT 12	12	15.5	8.5	17.0
61802352	SILVYN [®] SAT 16	16	20.0	11.5	20.0
61802353	SILVYN [®] SAT 20	20	16.5	15.3	24.0
61802354	SILVYN [®] SAT 25	25	20.5	19.1	29.0
61802355	SILVYN [®] SAT 32	32	23.5	26.2	38.0
61802356	SILVYN [®] SAT 40	40	24.8	34.2	48.0
61802357	SILVYN [®] SAT 50	51	30.0	44.8	58.0
61802358	SILVYN [®] SAT 63	61	33.5	54.5	70.0

Norm References: 

For more information please see our current catalogue. Please do not hesitate to contact our laboratory if there are any questions regarding resistance against aggressive agents and special oil.

Creator: PDP Released: DAMU1/PDP	Document: DB61802350EN Version: 01	Page 1 of 1
-------------------------------------	---------------------------------------	-------------